

/ Descriptions

Silicon PNP transistor in a SOT-323 Plastic Package.

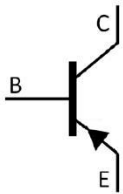
/ Features

Large I_c low $V_{ce(sat)}$, complementary pair with the 2SC1741W.

/ Applications

Medium power amplifier applications.

/ Equivalent Circuit



/ Pinning



PIN1 Emitter PIN 2 Base PIN 3 Collector

/ Marking

h_{FE} Classifications Symbol	P	Q	R
h_{FE} Range	82~180	120~270	180~390
Marking	HHP	HHQ	HHR

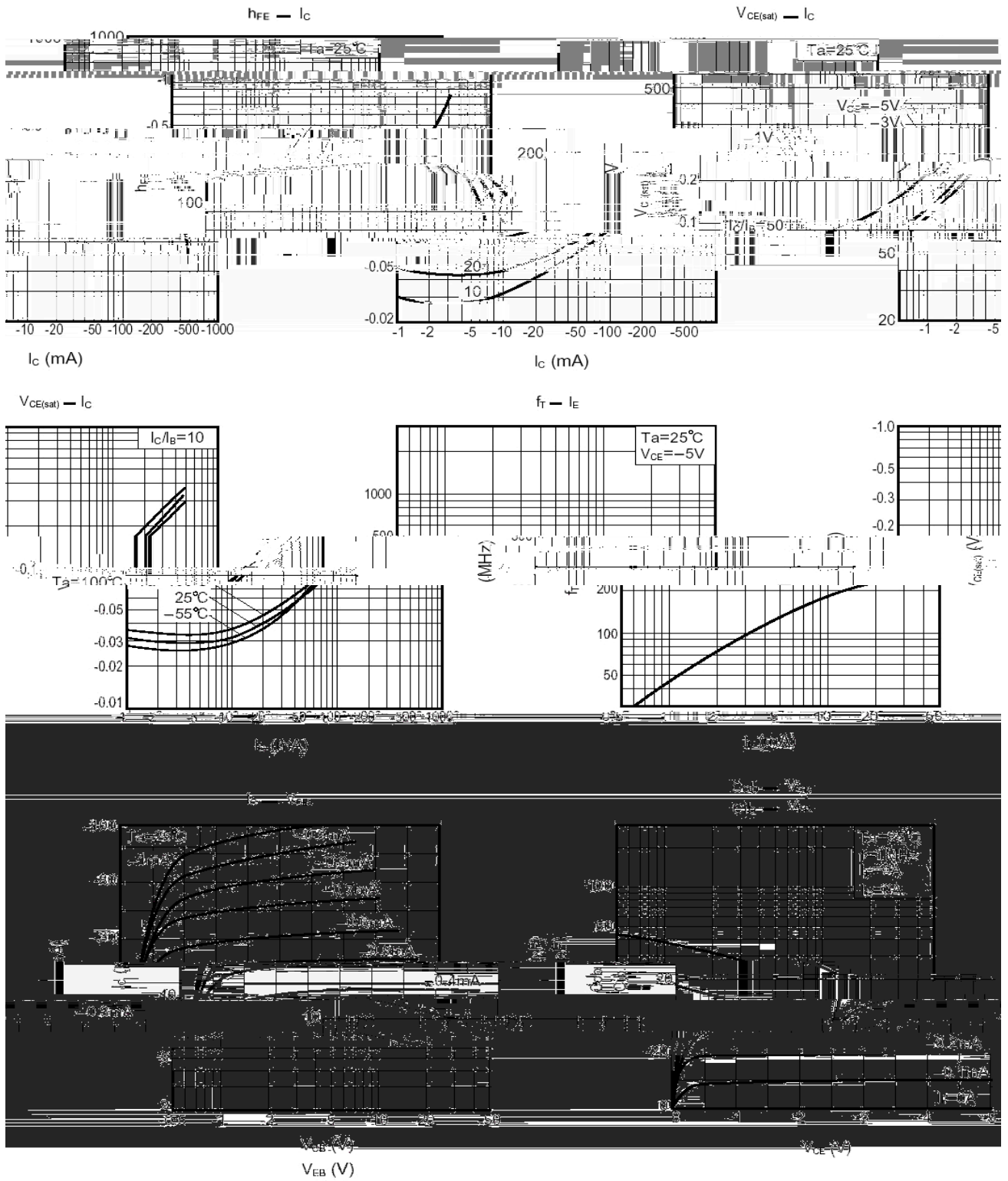
/ Absolute Maximum Ratings(Ta=25)

Parameter	Symbol	Rating	Unit
Collector to Base Voltage	V_{CBO}	-40	V
Collector to Emitter Voltage	V_{CEO}	-32	V
Emitter to Base Voltage	V_{EBO}	-5.0	V
Collector Current - Continuous	I_C	-500	mA
Collector Power Dissipation	P_C	200	mW
Junction Temperature	T_j	150	
Storage Temperature Range	T_{stg}	-55~150	

/ Electrical Characteristics(Ta=25)

Parameter	Symbol	Test Conditions	Min	Typ	Max	Unit
Collector to Base Breakdown Voltage	V_{CBO}	$I_C=-100\mu A$	-40			V
Collector to Emitter Breakdown Voltage	V_{CEO}	$I_C=-1.0mA$	-32			V
Emitter to Base Breakdown Voltage	V_{EBO}	$I_E=-100\mu A$	-5.0			V
Collector Cut-Off Current	I_{CBO}	$V_{CB}=-20V$			-1.0	μA
Emitter Base Cut-Off Current	I_{EBO}	$V_{EB}=-4.0V$			-1.0	μA
DC Current Gain	h_{FE}	$V_{CE}=-3.0V$ $I_C=-10mA$	82		390	
Collector to Emitter Saturation Voltage	$V_{CE(sat)}$	$I_C=-100mA$ $I_B=-10mA$			-0.4	V
Transition Frequency	f_T	$V_{CE}=-5.0V$ $f=100MHz$ $I_E=20mA$		200		MHz
Collector output capacitance	C_{ob}	$V_{CB}=-10V$ $f=1.0MHz$ $I_E=0$		7.0		pF

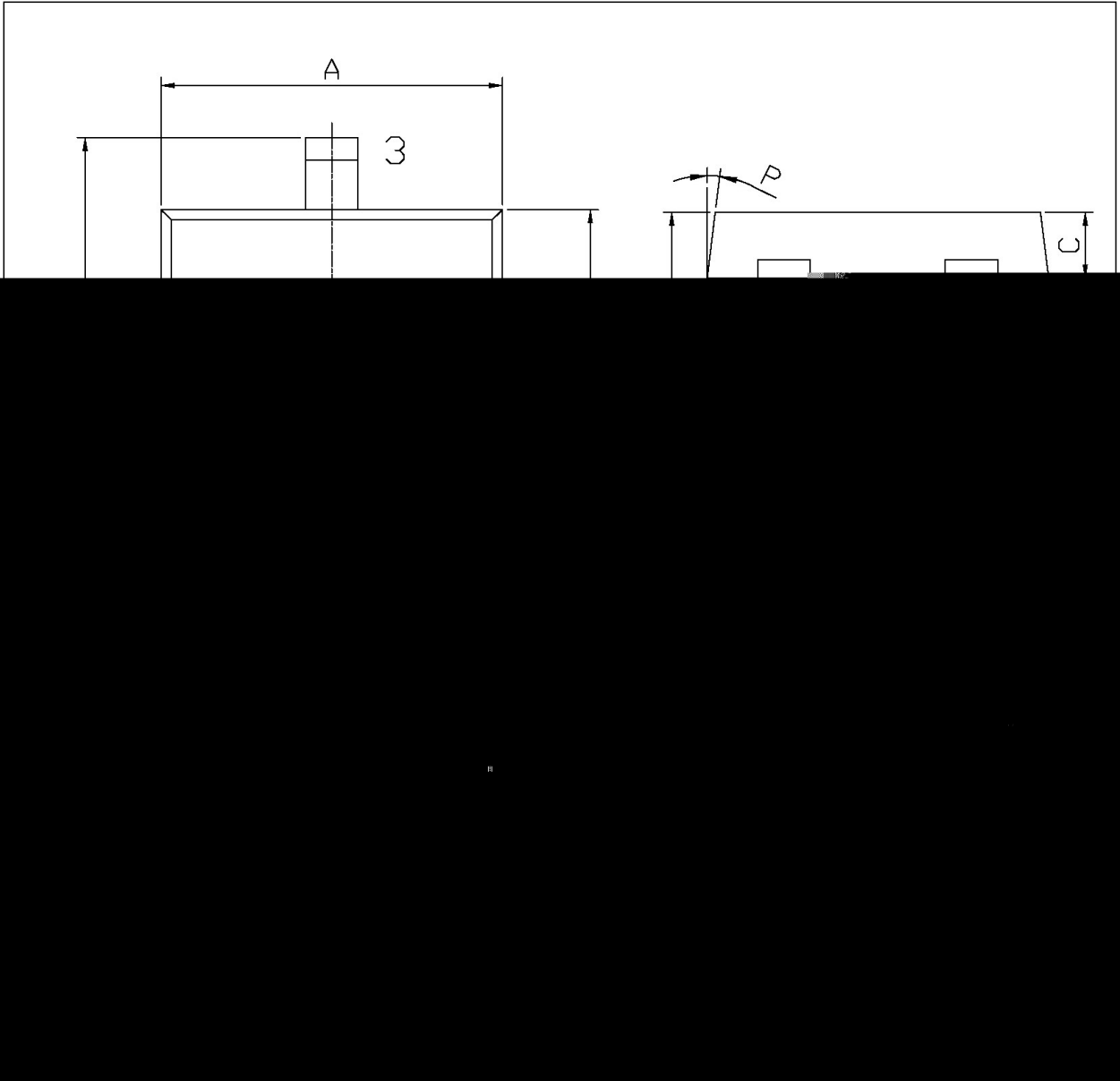
/ Electrical Characteristic Curve



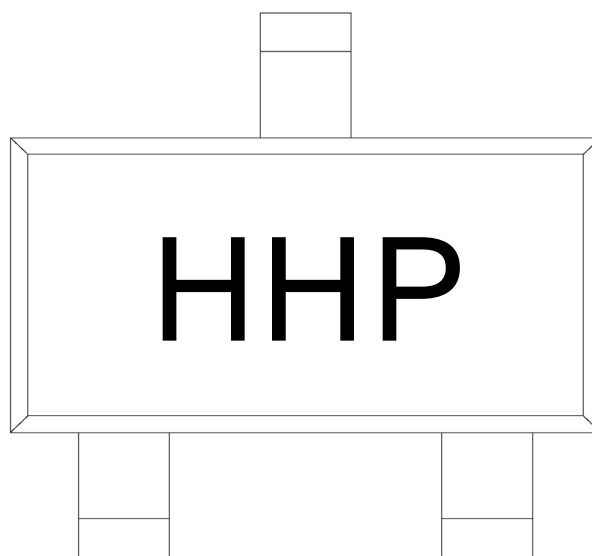
/ Package Dimensions

SOT-323

单位: mm



/ Marking Instructions



H

H

P h_{FE}

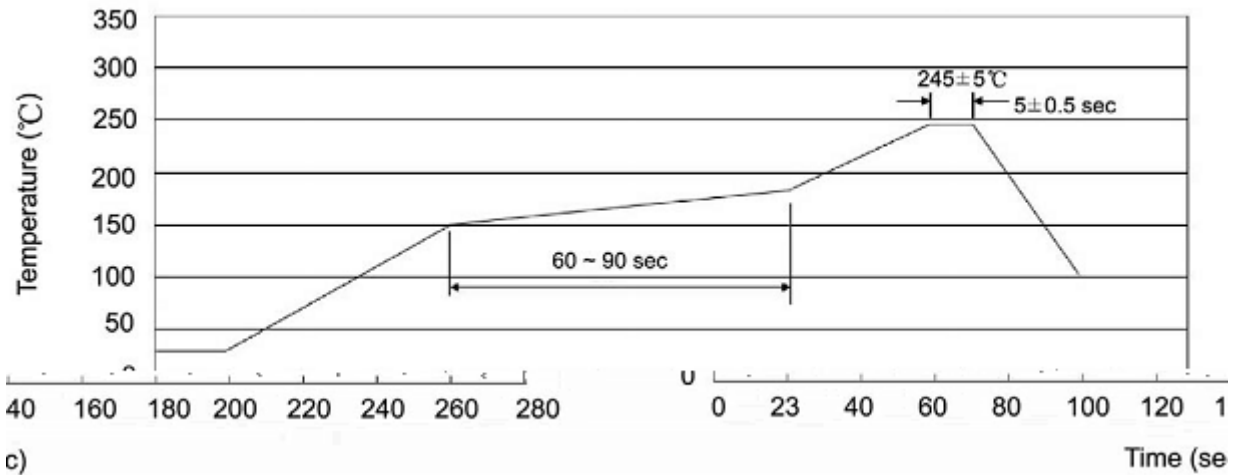
Note:

H: Company Code.

H: Product Type.

P h_{FE} Classifications Symbol

() / K\d g\iXk i\`Gif]`d`]fi`@`l`]\`fn`Jfd` \i`e`^ZGY\$=i\`z



Note:

- | | | | | | |
|---|-----|-----|----|----------|---|
| 1 | 25 | 150 | 60 | 90sec; | 1.Preheating:25~150 , Time:60~90sec. |
| 2 | 245 | 5 | 5 | 0.5sec; | 2.Peak Temp.:245 5 , Duration:5 0.5sec. |
| 3 | | | 2 | 10 /sec. | 3. Cooling Speed: 2~10 /sec. |

/ Resistance to Soldering Heat Test Conditions

260 5 10 1 sec. Temp.:260±5 Time:10±1 sec

/ Packaging SPEC.

/ REEL

Package Type 封装形式	Units 包装数量					Dimension 包装尺寸 (unit: mm ³)		
	只卷盘	卷盘盒	只盒	盒箱	只箱	盒		箱
						"		

/ Notices