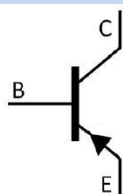


/ Descriptions

/ Features

/ Applications

/ Equivalent Circuit



/ Pinning



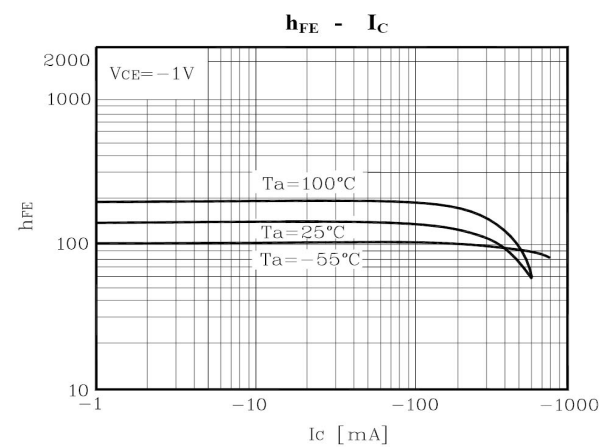
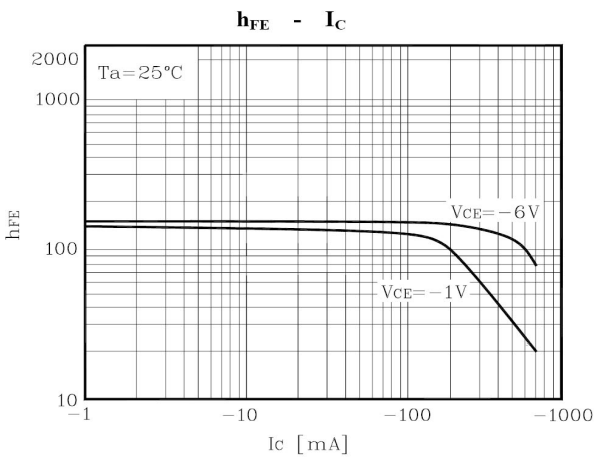
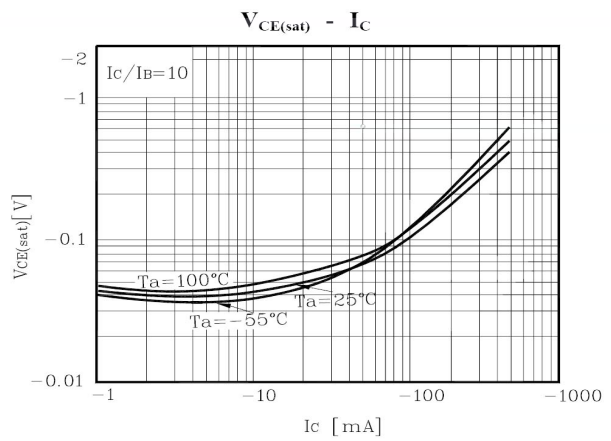
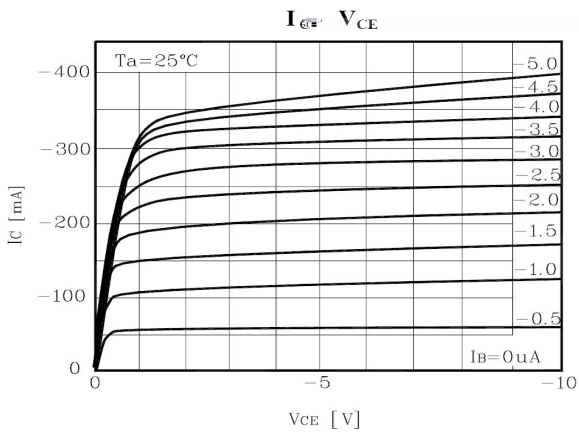
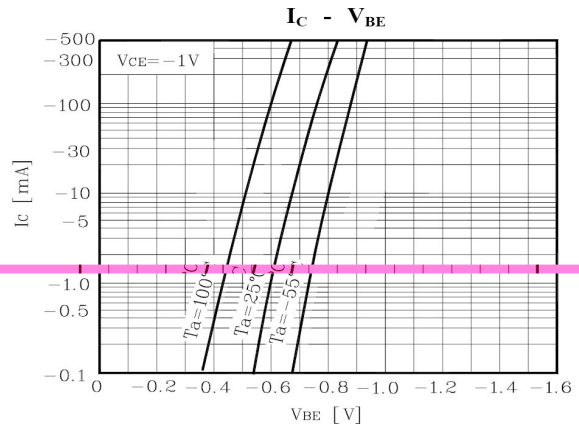
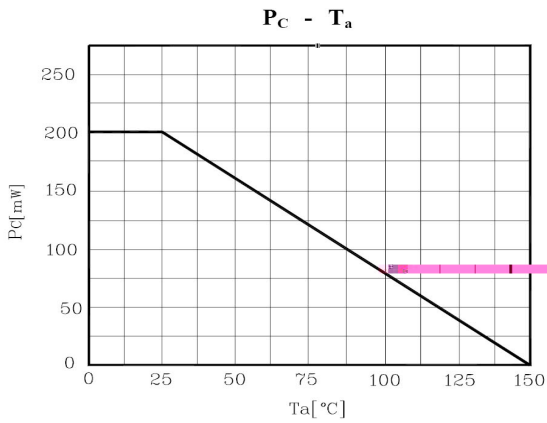
/ h_{FE} Classifications & Marking

/ Absolute Maximum Ratings(Ta=25)

/ Electrical Characteristics(Ta=25)

		μ				
		μ				
						μ
						μ

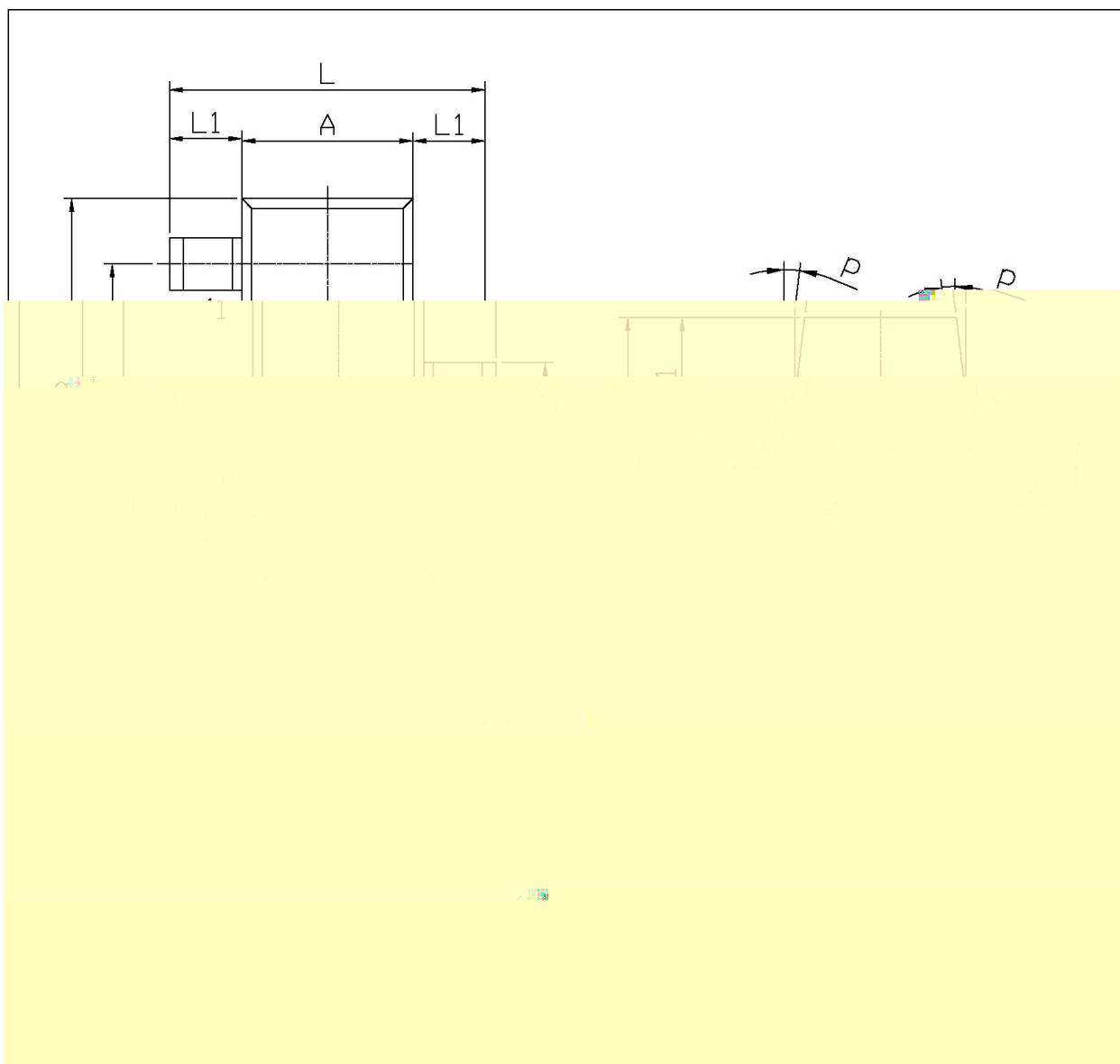
/ Electrical Characteristic Curve



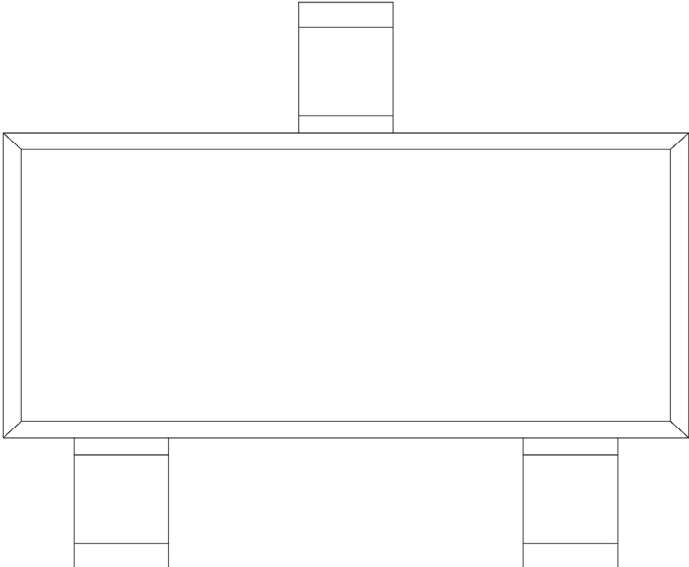
/ Package Dimensions

SOT-23

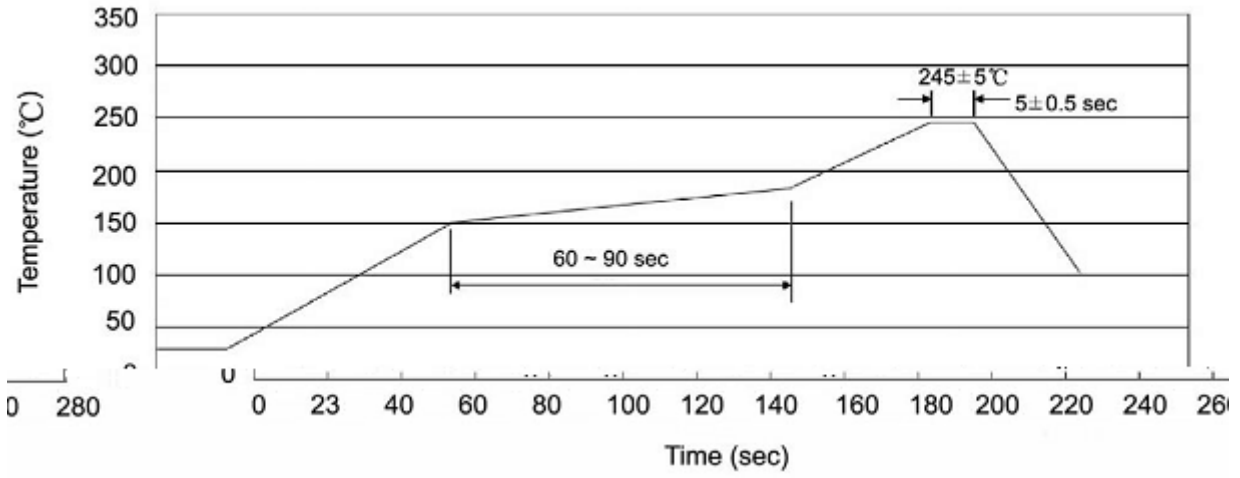
单位: mm



/ Marking Instructions



() / Temperature Profile for IR Reflow Soldering(Pb-Free)



/ Resistance to Soldering Heat Test Conditions

/ Packaging SPEC.

包装数量

包装尺寸 :