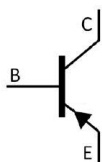


/ Descriptions

/ Features

/ Applications

/ Equivalent Circuit



/ Pinning



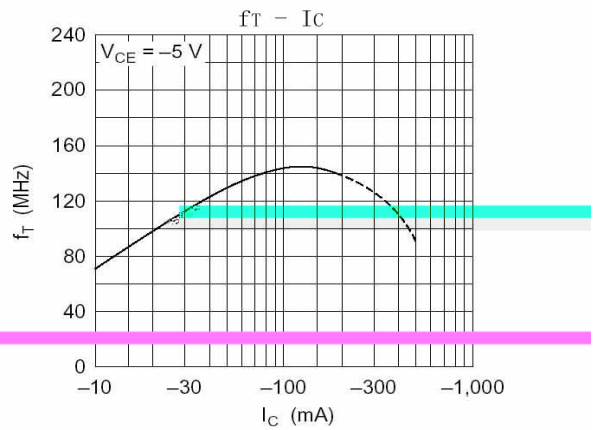
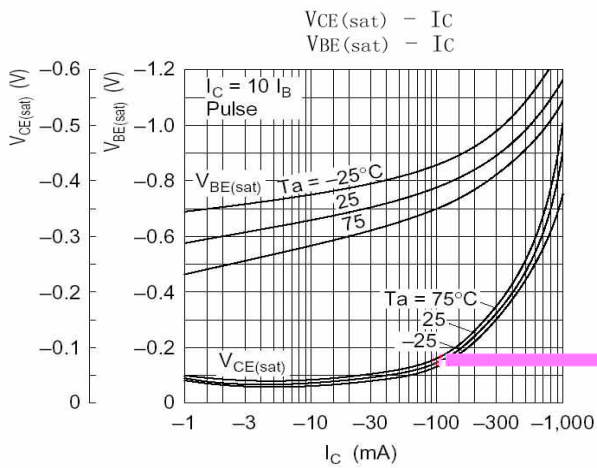
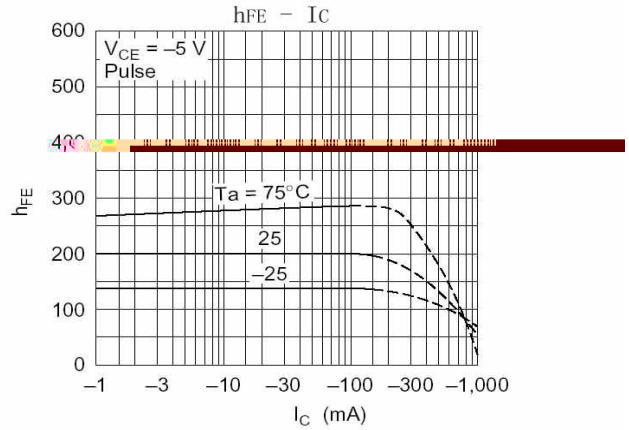
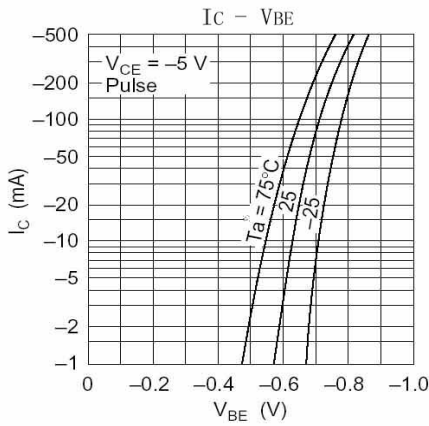
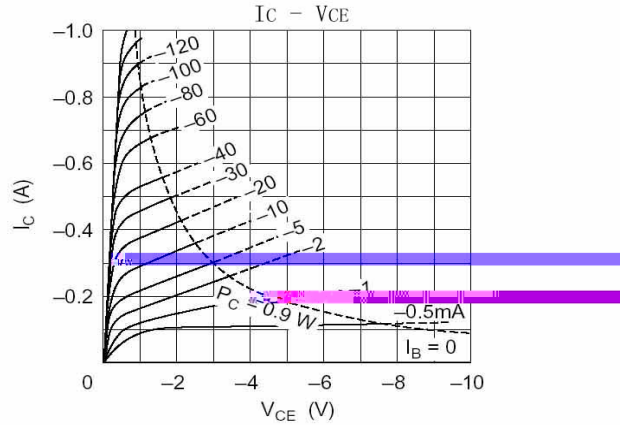
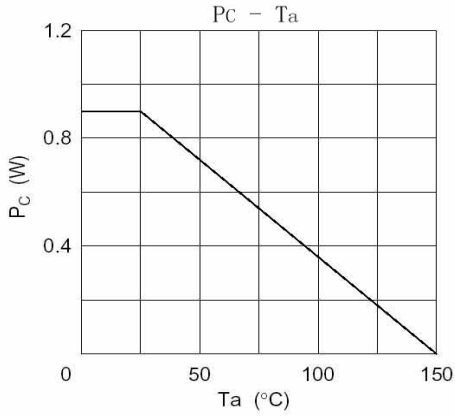
/ h_{FE} Classifications & Marking

/ Absolute Maximum Ratings(Ta=25)

/ Electrical Characteristics(Ta=25)

		μ				
		∞				
		μ				
						μ

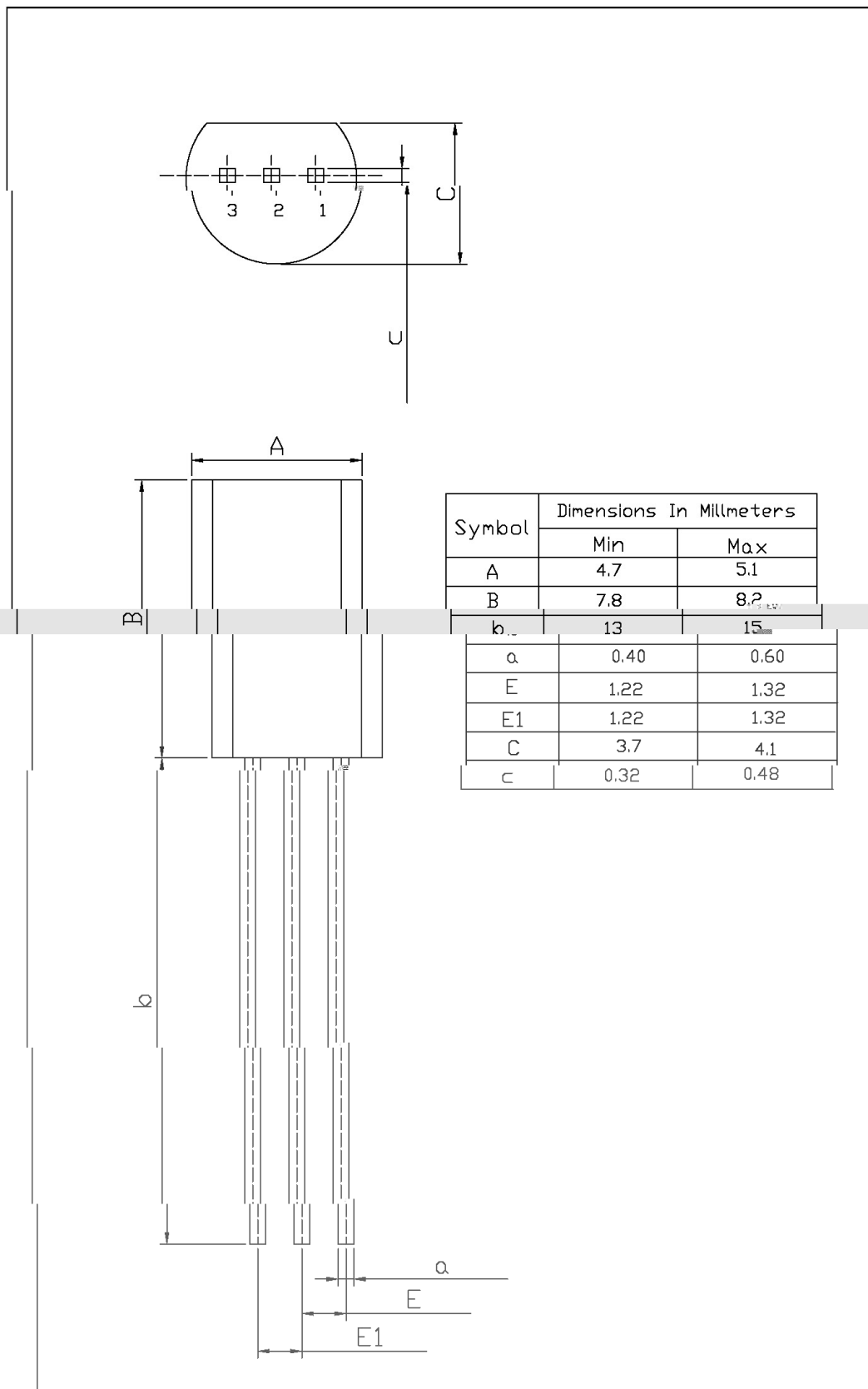
/ Electrical Characteristic Curve



/ Package Dimensions

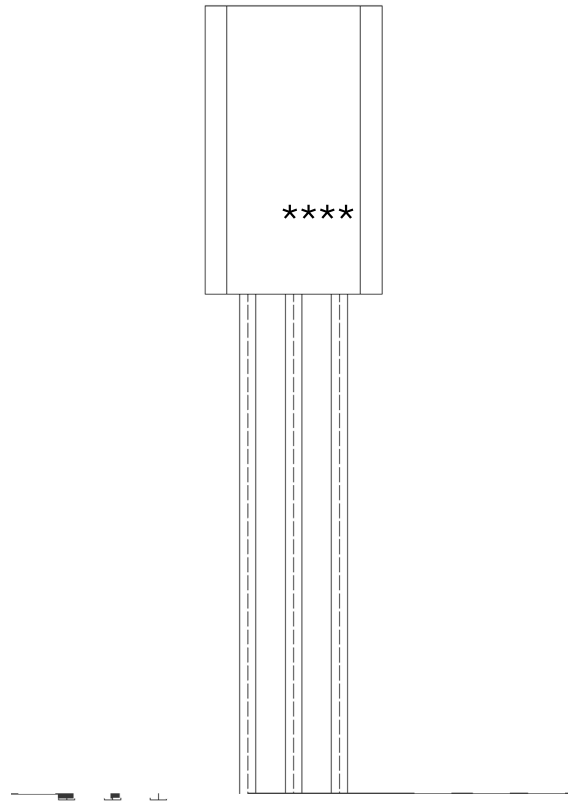
TO-92LM

Unit: mm



Symbol	Dimensions In Millimeters	
	Min	Max
A	4.7	5.1
B	7.8	8.2 _{±0.2}
b	13	15 _{±0.2}
a	0.40	0.60
E	1.22	1.32
E1	1.22	1.32
C	3.7	4.1
c	0.32	0.48

/ Marking Instructions



() / Temperature Profile for Dip Soldering(Pb-Free)

