

# 2SC2230(A)

## / Descriptions

TO-92LM      NPN

## / Features

$V_{CE0}$  ,

## / Applications

## / Equivalent Circuit



## / Pinning

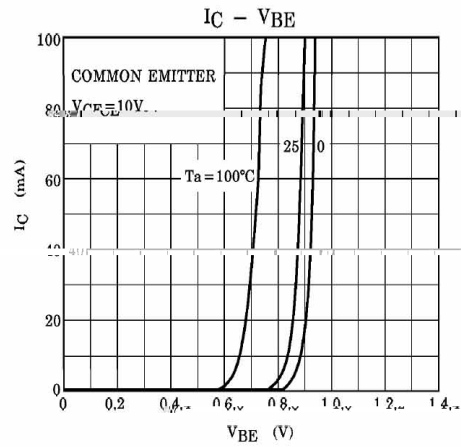
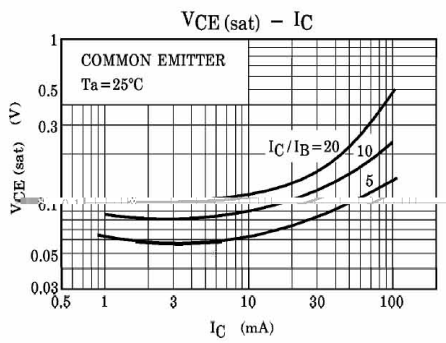
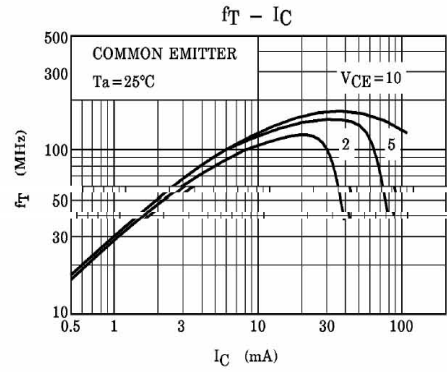
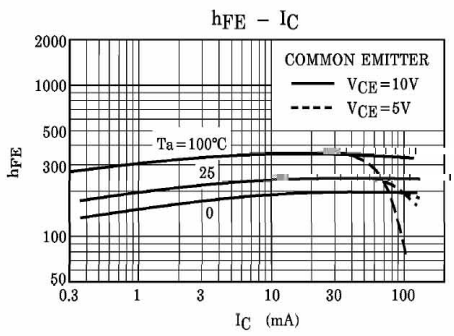
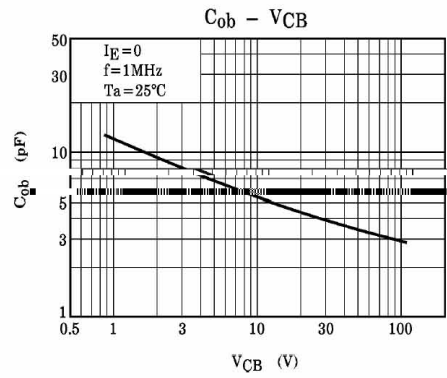
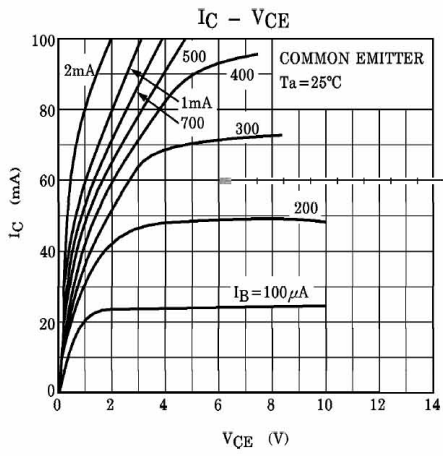


## / $h_{FE}$ Classifications & Marking


**/ Absolute Maximum Ratings(Ta=25 )**


**/ Electrical Characteristics(Ta=25 )**

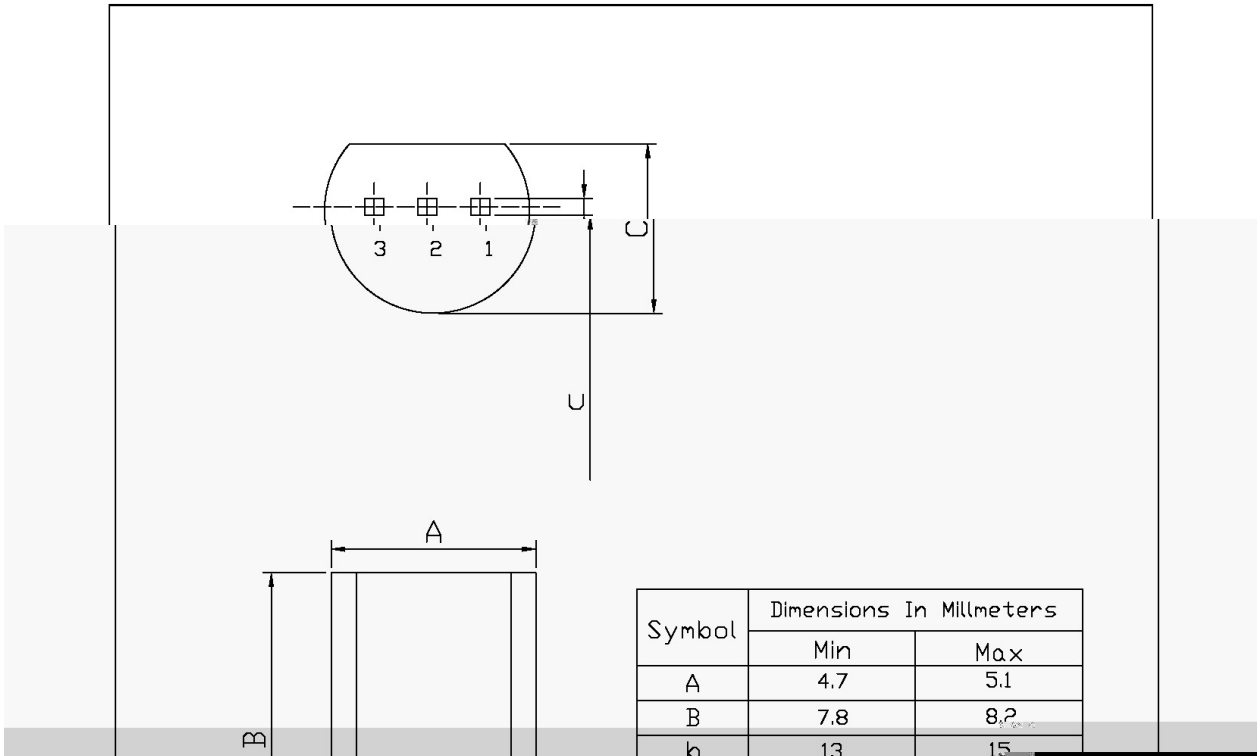

/ Electrical Characteristic Curve



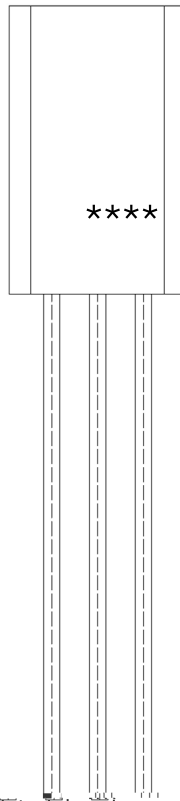
/ Package Dimensions

T0-92LM

Unit: mm



/ Marking Instructions



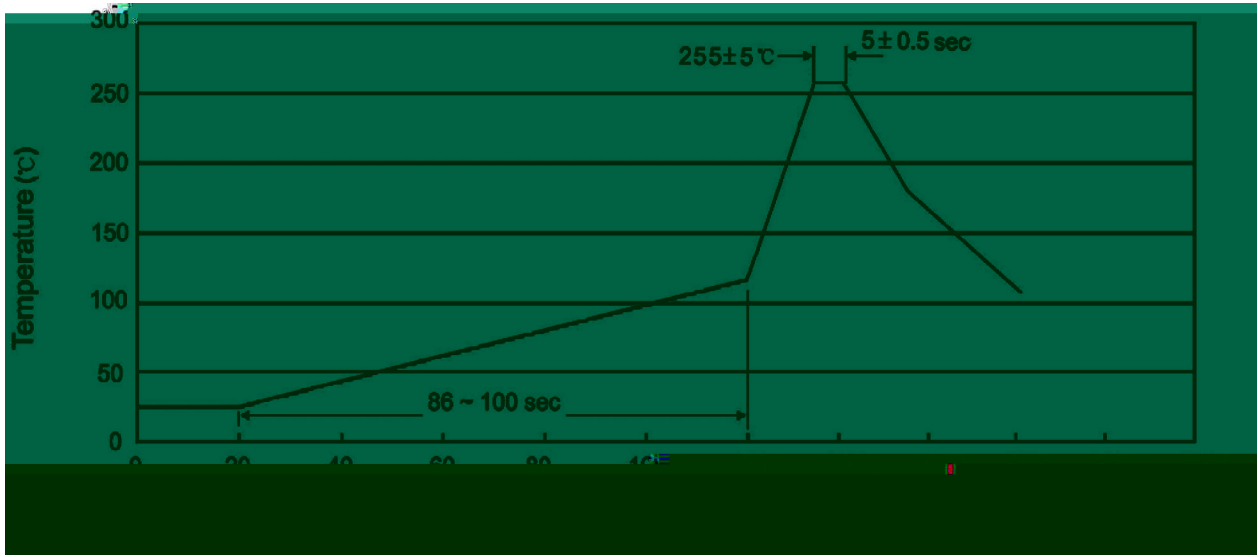
BR:

C2230A

Y:  $h_{FE}$

\*\*\*\*

( ) / Temperature Profile for Dip Soldering(Pb-Free)



± ± ± ±

/ Resistance to Soldering Heat Test Conditions

± ±

/ Packaging SPEC.

封装形式	包装数量					包装尺寸		
	Units/Bag 只/袋	Units/Box 只/盒	Units/Box 只/箱	Inner Boxes/Outer Box 盒/箱	Units/Outer Box 只/箱	Bag 袋	Inner Box 盒	Outer Box 箱
TO-92LM	1,000	8	8,000	5	40,000	135×190	237×172×102	560×245×195