

2SC2344

/ Descriptions

TO-220 NPN

/ Features

2SA1011

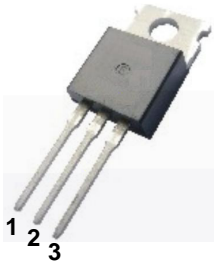
/ Applications

100W

/ Equivalent Circuit



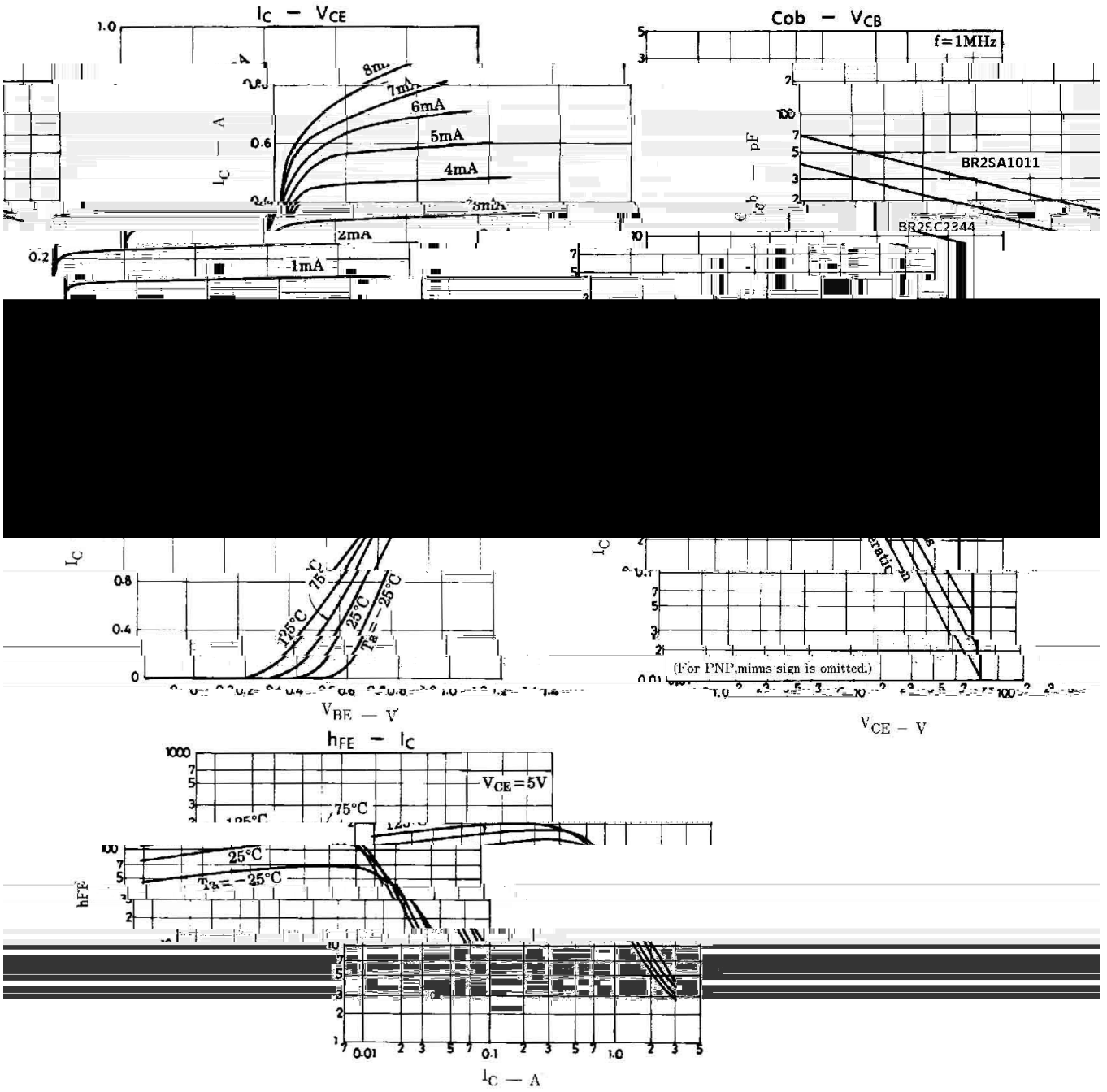
/ Pinning



/ h_{FE} Classifications & Marking

2SC2344

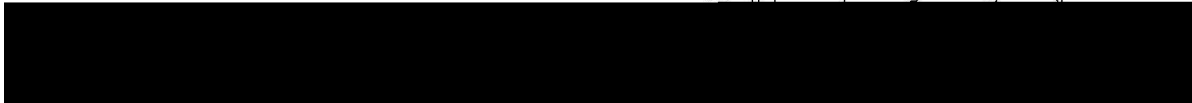
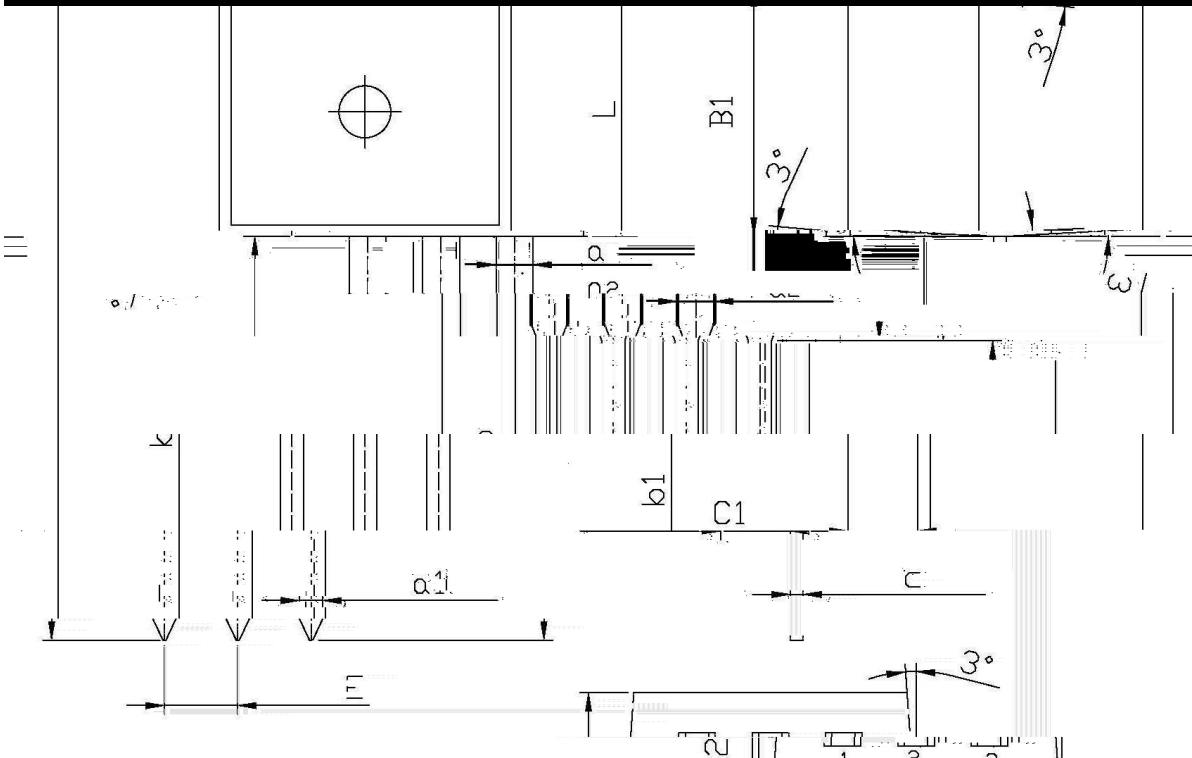
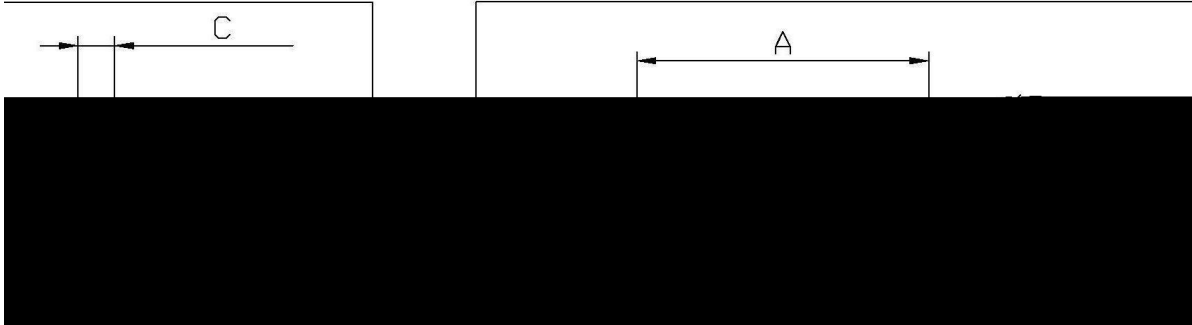
/ Electrical Characteristic Curve



/ Package Dimensions

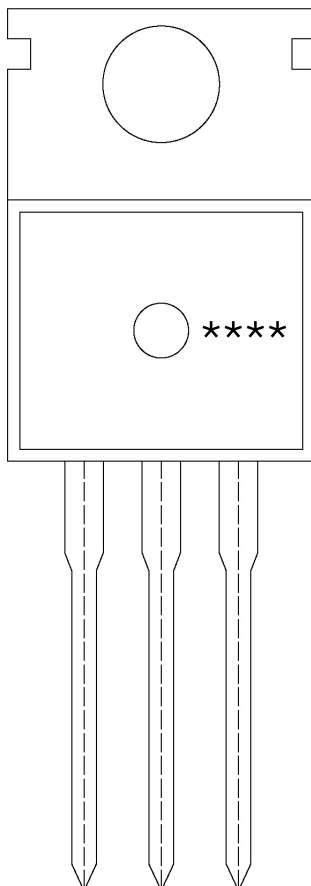
单位: mm

TO-220



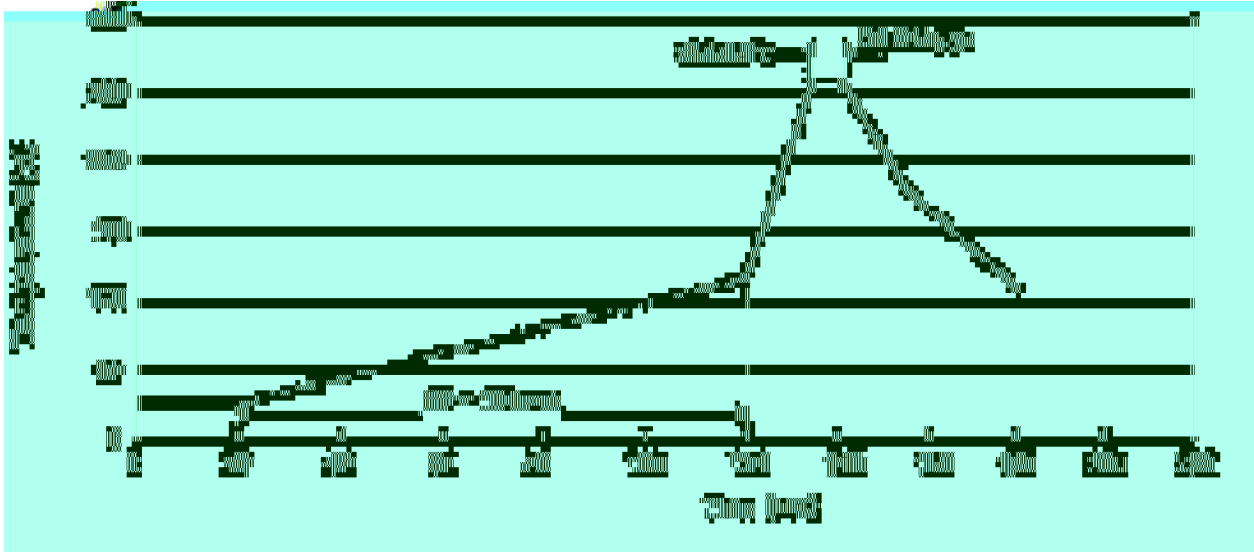
Symbol	DIMENSIONS IN MILLINE METERS		Symbol	DIMENSIONS IN MILLIMETERS	
	Min	Max		Min	Max
1.4		9.8	10.2	1.2	
6.7		3.56	3.64	6.3	
		15.7	16.1	B1	9.0
					9.4
0.4	0.6		a	1.22	1.32
				0.2	1.25
					1.45

/ Marking Instructions



D:

() / Temperature Profile for Dip Soldering(Pb-Free)



± ± ± ±

/ Resistance to Soldering Heat Test Conditions

± ± °C

/ Packaging SPEC.

						Bag	Inner Box	Outer Box
	Units/Bag /	Bags/Inner Box /	Units/Inner Box /	Inner Boxes/Outer Box /	Units/Outer Box /			
TO-220/F	200	10	2,000	5	10,000	135×190	237×172×102	560×245×195

Units/Tube /	Tubes/Inner Box /	Units/Inner Box /	Inner Boxes/Outer Boxes /	279.74	02ref1192b2.5188	77/TT4 1 T#.	015 0 TD03 T#T6 T#389.7	TT12 1 T#05