

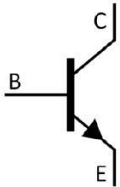
/ Descriptions

TO-220          NPN

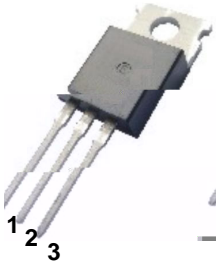
/ Features

/ Applications

/ Equivalent Circuit



/ Pinning



/  $h_{FE}$  Classifications & Marking

	~	~	~

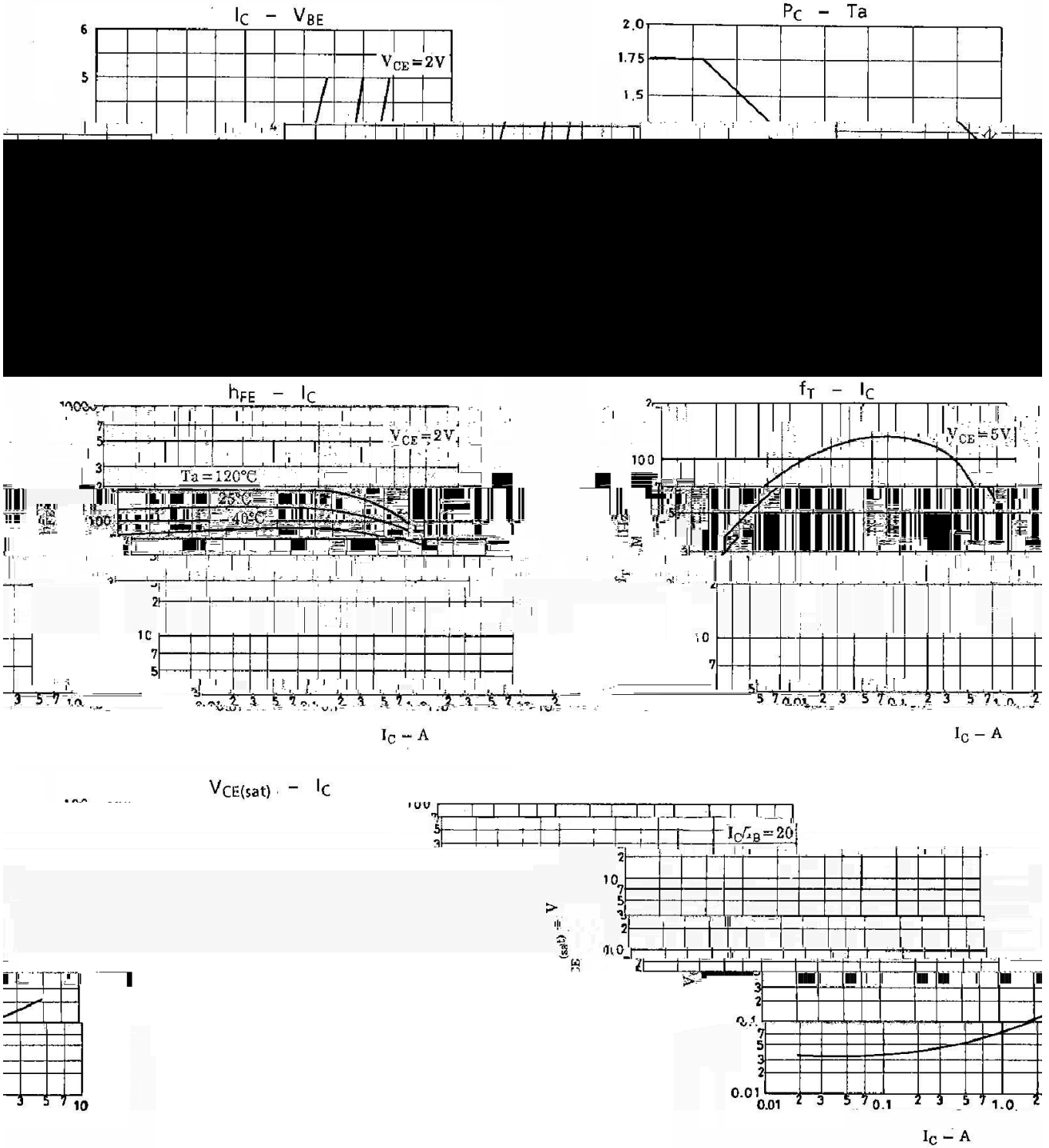
**/ Absolute Maximum Ratings(Ta=25 )**

		~	

**/ Electrical Characteristics(Ta=25 )**

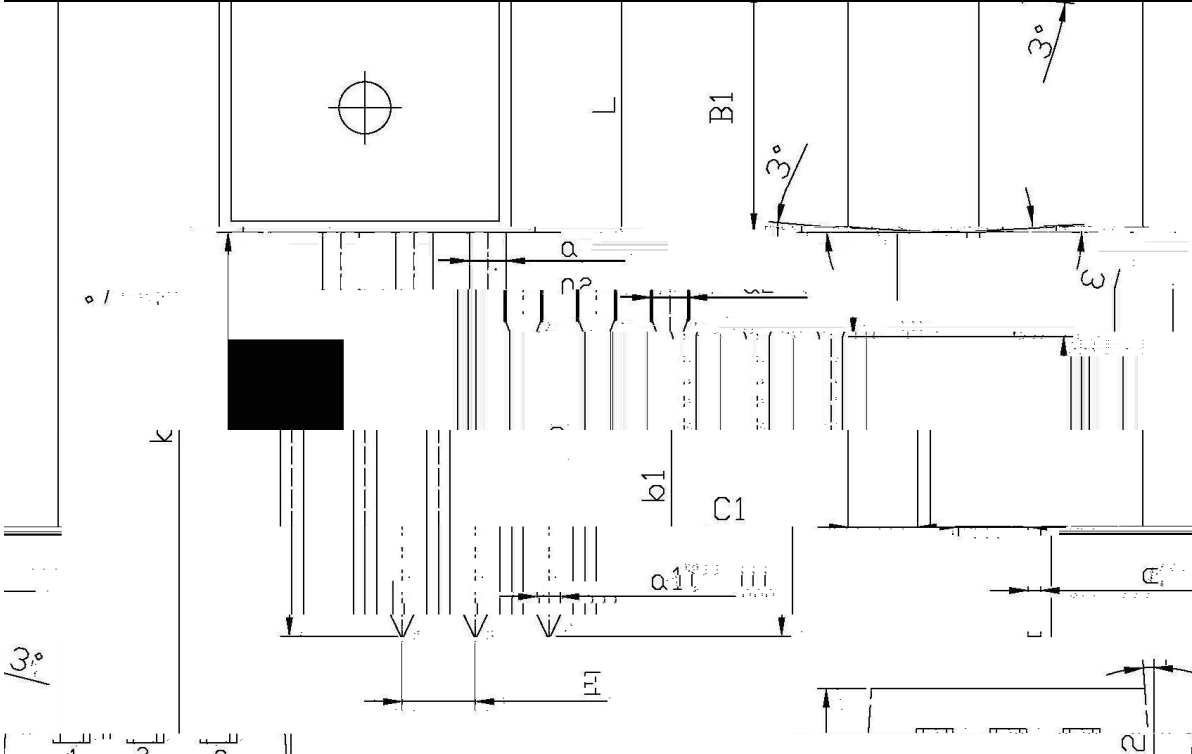
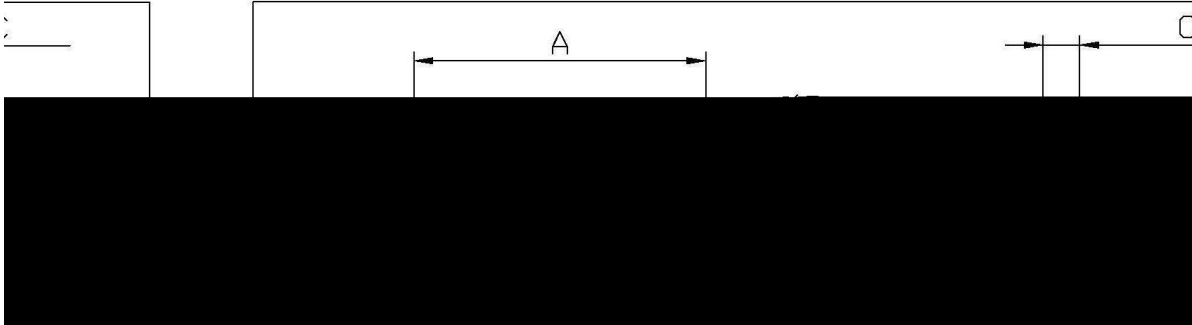
						μ
						μ
						μ
						μ
						μ

/ Electrical Characteristic Curve



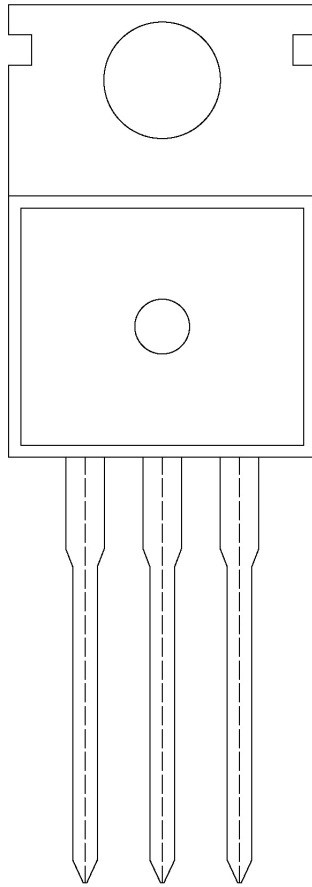
/ Package Dimensions

mm TO-220 单位:



Symbol	Dimensions in millimeters		Symbol	Dimensions in millimeters	
	Min	Max		Min	Max
A	9.8	10.2	C1	1.2	1.4
R	3.56	3.64	B	6.3	6.7
B1	9.0	9.4	b1	0.7	0.9
C	1.2	1.4	a	1.2	1.2
L	1.25	1.45	α	3°	3°

/ Marking Instructions



BR

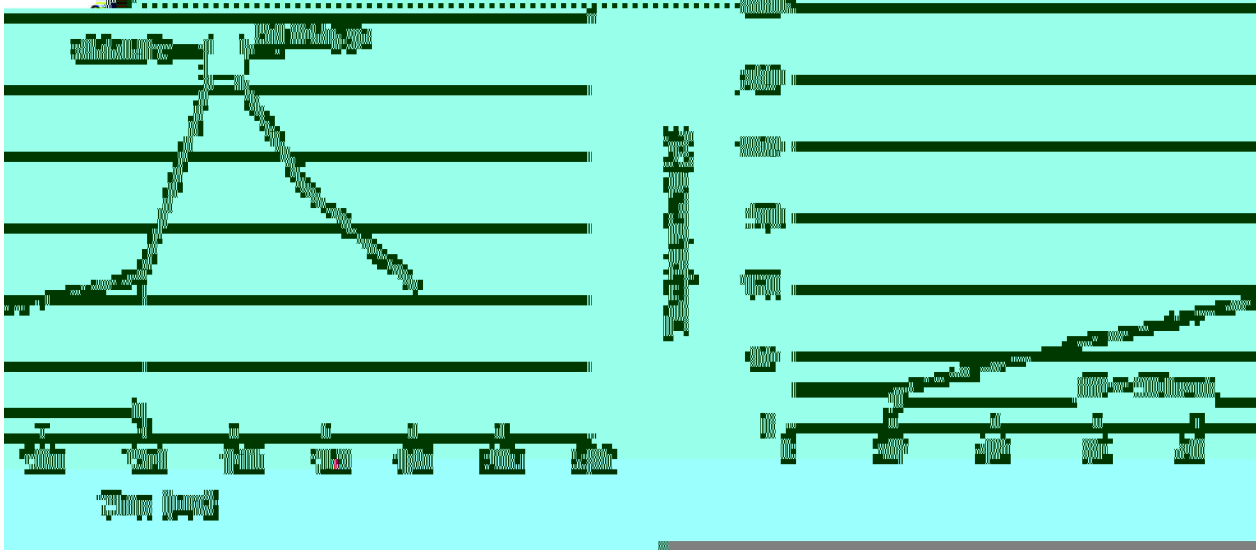
C3253

Q:

\*\*\*\*

$h_{FE}$

( ) / Temperature Profile for Dip Soldering(Pb-Free)



± ± ± ±

/ Resistance to Soldering Heat Test Conditions

± ±

/ Packaging SPEC.


--	--	--