

/ Descriptions

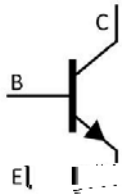
KF \$,) E GE

/ Features

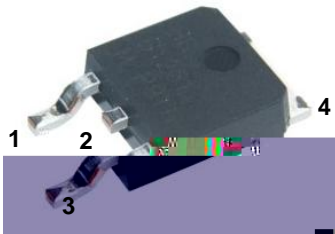
) J9- +08;

/ Applications

/ Equivalent Circuit



/ Pinning



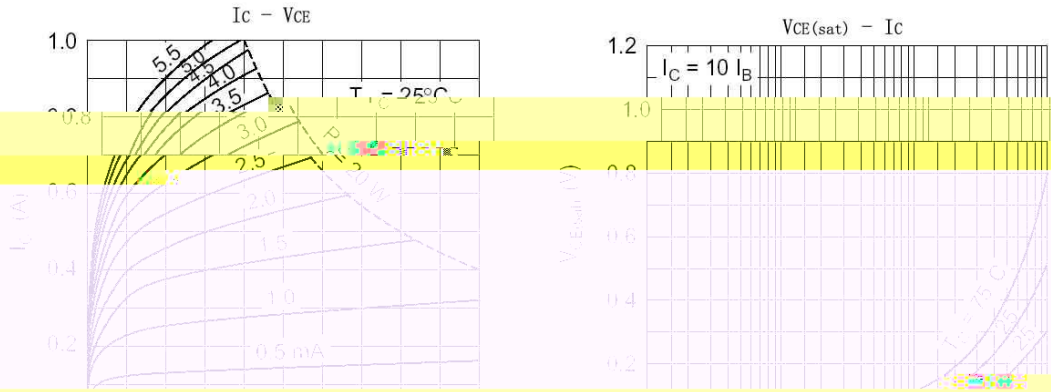
/ h_{FE} Classifications & Marking

/ Absolute Maximum Ratings(Ta=25)

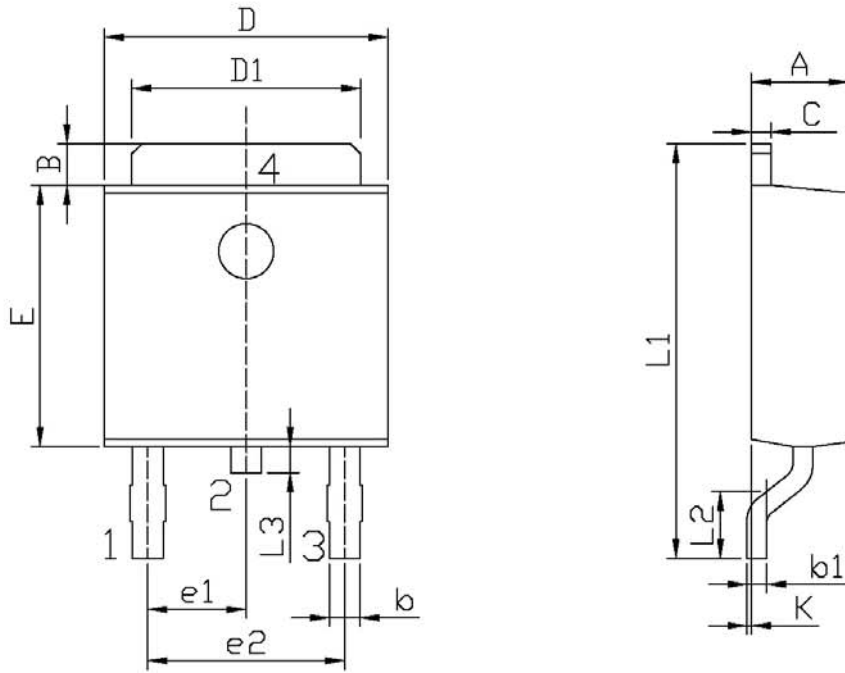
/ Electrical Characteristics(Ta=25)

						μ

/ Electrical Characteristic Curve



/ Package Dimensions

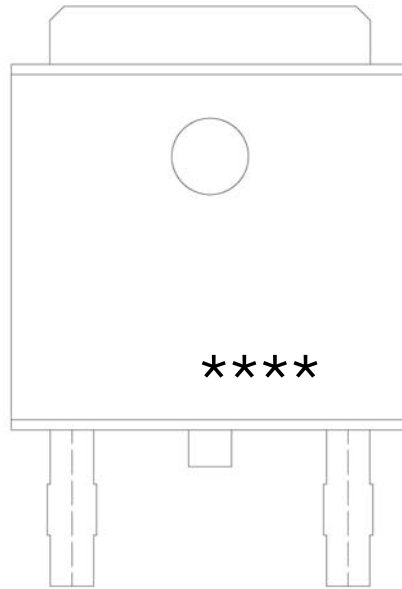


单位: mm

Symbol	Dimensions In Millimeters		Symbol	Dimensions In Millimeters	
	Min	Max		Min	Max
A	2.20	2.40	E	5.95	6.25
B	0.95	1.25	e1	2.24	2.34
b	0.50	0.70	e2	4.43	4.73
b1	0.45	0.55	L1	9.45	9.95
C	0.45	0.55	L2	1.25	1.75
D	6.45	6.75	L3	0.60	0.90
D1	5.10	5.50	K	0.00	0.10

TO-252

/ Marking Instructions

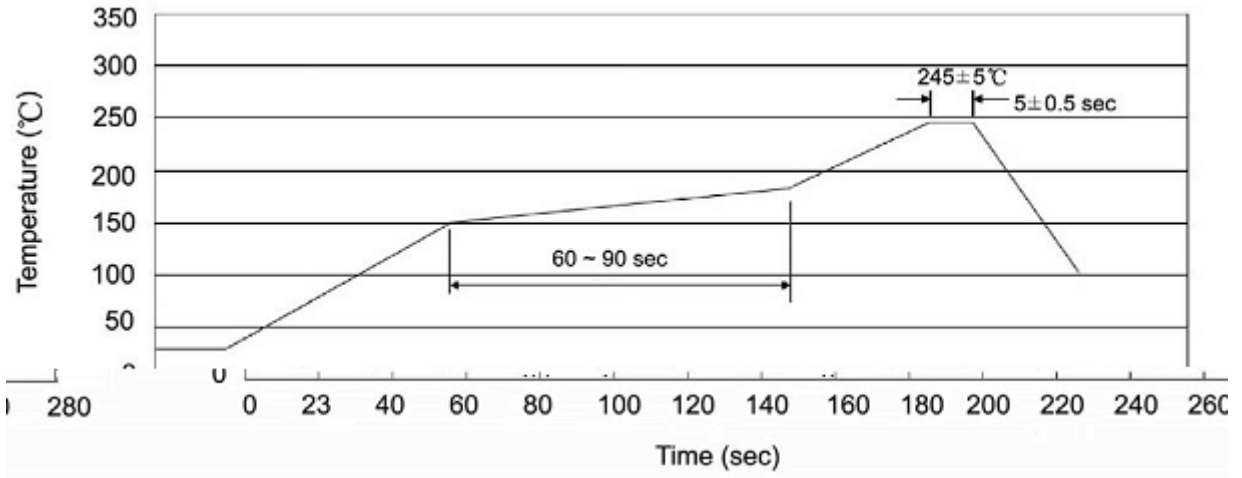


; --08;

91

!!!!

() / Temperature Profile for IR Reflow Soldering(Pb-Free)



... ..

/ Resistance to Soldering Heat Test Conditions

... ..

/ Packaging SPEC.

Units/Reel /	Reels/Inner Box /
-----------------	----------------------