

Rev.F Dec.-2018

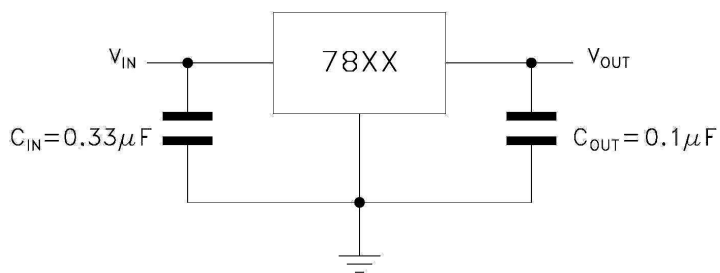
TO-220

Voltage Regulator in a TO-220 Plastic Package.

1.5A,

3-Terminal regulators ,output current up to 1.5 A, internal thermal overload protection and short-circuit limiting.

Voltage Regulator.

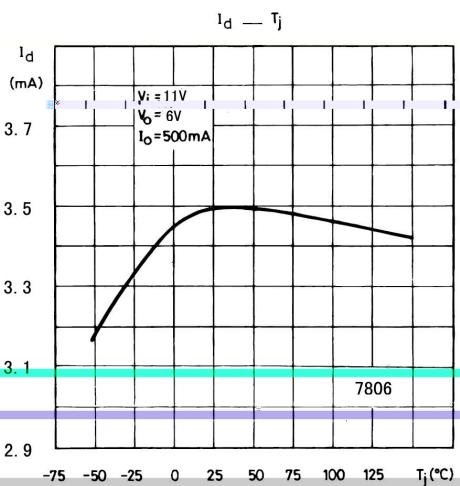
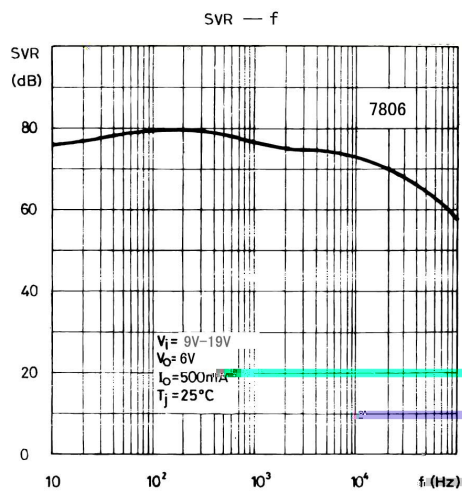
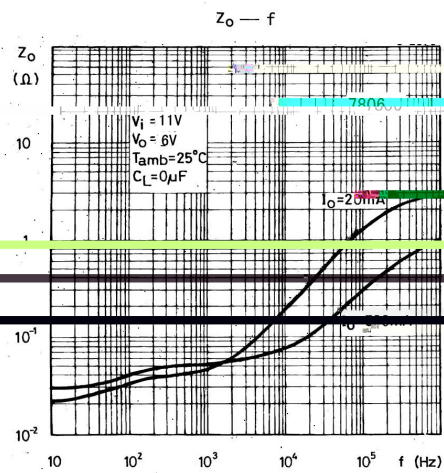
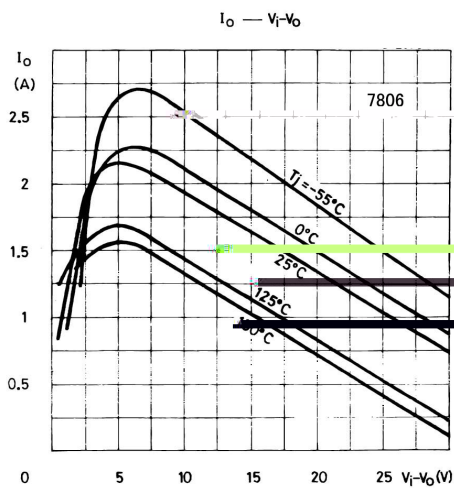
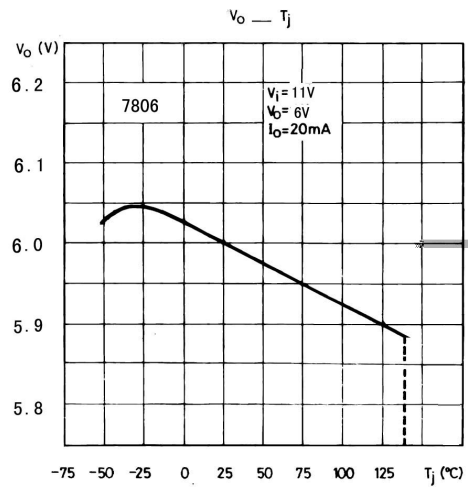
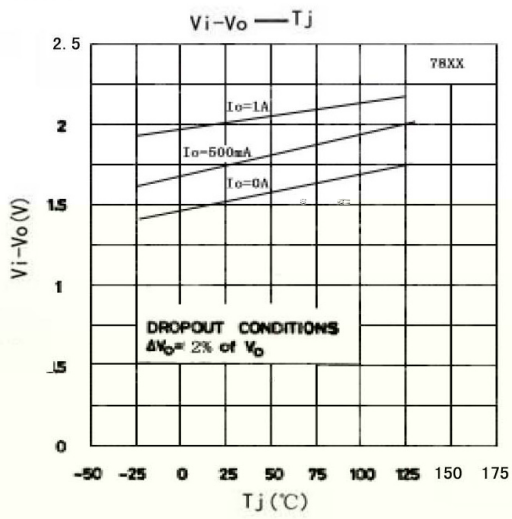


PIN1 IN PIN 2 GND PIN 3 OUT

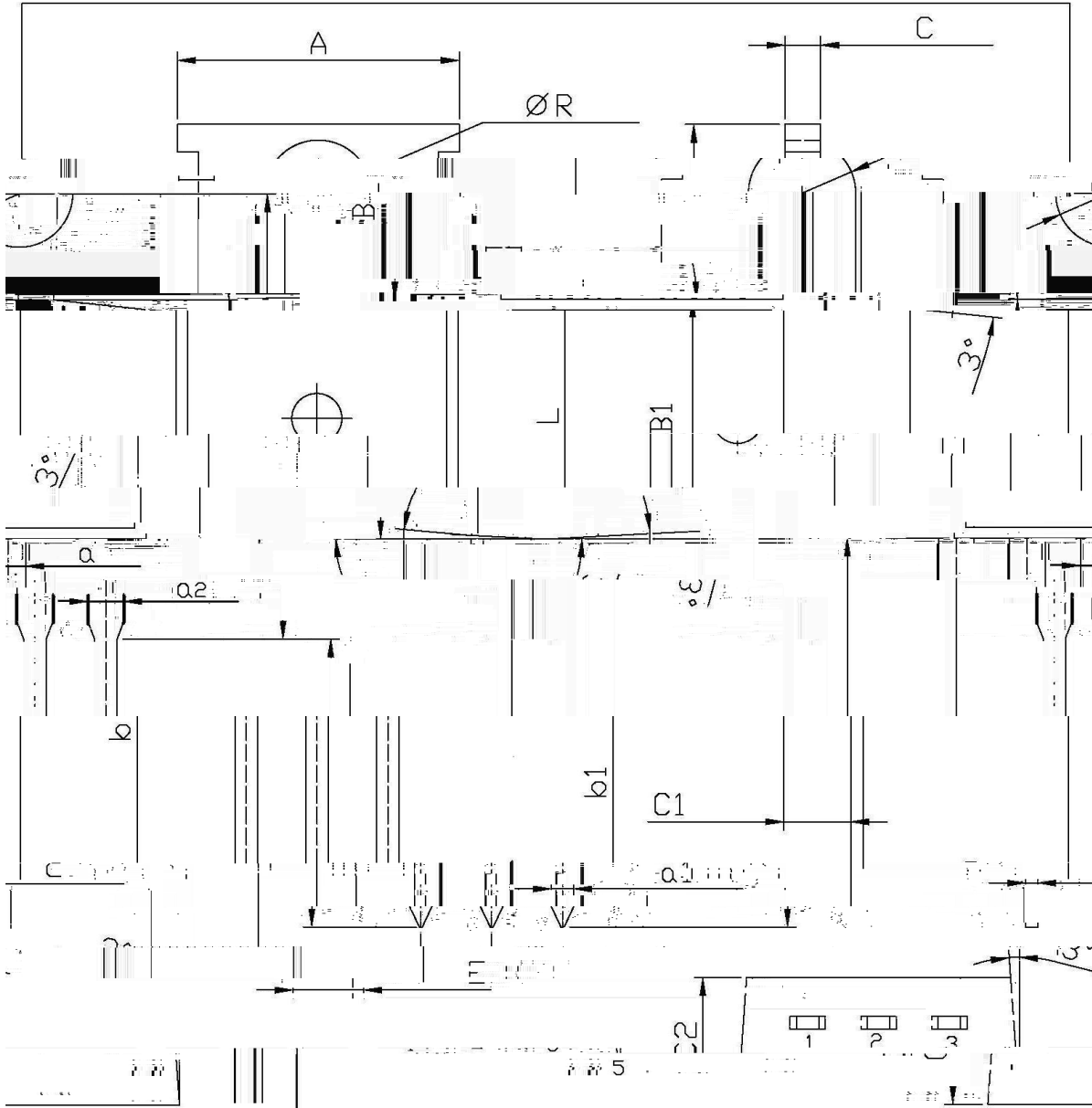
See Marking Instructions

Parameter	Symbol	Rating	Unit
Input Voltage Difference	V_i	35	V
Junction-to-Ambient	R_{JA}	50	$^{\circ}\text{C}/\text{W}$
Junction-to-Case	R_{JC}	5.0	$^{\circ}\text{C}/\text{W}$
Operating Temperature Range	T_{OPR}	0~125	$^{\circ}\text{C}$
Storage temperature range	T_{stg}	-65~150	$^{\circ}\text{C}$

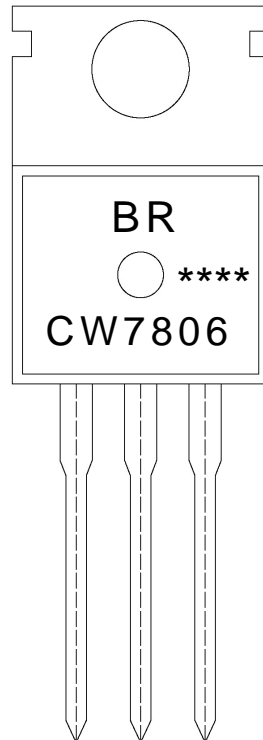
Parameter	Symbol	Test Conditions	Min	Typ	Max	Unit
Line regulation	V_o	$T_j=25^{\circ}\text{C}$	5.75	6.0	6.25	V
		$V_i=9\text{V}-21\text{V}$ $I_o=5\text{mA}-1\text{A}$ P_o 15W	5.7	6.0	6.3	
Load Regulation	ΔV_o	$T_j=25^{\circ}\text{C}$ $I_o=5\text{mA}-1.5\text{A}$			120	mV
		$T_j=25^{\circ}\text{C}$ $I_o=250\text{mA}-750\text{mA}$			60	
Load Regulation	ΔV_o	$T_j=25^{\circ}\text{C}$ $V_i=8\text{V}-25\text{V}$			120	mV
		$T_j=25^{\circ}\text{C}$ $V_i=9\text{V}-13\text{V}$			60	
Bias current	I_d	$T_j=25^{\circ}\text{C}$			8.0	mA
Bias current change	ΔI_d	$V_i=9\text{V}-25\text{V}$			0.8	mA
		$I_o=5\text{mA}-1\text{A}$			0.5	mA
Ratio of Change in VREF to Cathode Voltage	$\Delta V_o/\Delta T$	$I_o=5\text{mA}$		-0.8		mV/ $^{\circ}\text{C}$
RMS Noise vs. %of VOUT	eN	B=10Hz-100KHz $T_j=25^{\circ}\text{C}$		45		$\mu\text{V}/V_o$
Ripple Rejection	SVR	$V_i=9\text{V}-19\text{V}$ $f=120\text{Hz}$	59	75		dB
Dropout voltage	V_d	$I_o=1\text{A}$ $T_j=25^{\circ}\text{C}$		2.0		V
Output Regulation	R_o	$f=1\text{KHz}$		19		m
Short Circuit Current Limit	I_{sc}	$V_i=35\text{V}$ $T_j=25^{\circ}\text{C}$		0.55		A



T0-220 单位: mm



Dimension in Millimeters		Dimension in Millimeters			
Symbol	Min	Max	Symbol	Min	Max
A	9.8	10.2	C	1.2	1.4
R	3.56	3.64	B	6.3	6.7
	15.7	16.1	B1	9.1	9.4
b	12.6	13.6	C1	2.2	
b1	9.6	10.6	a1	0.7	
a	1.22	1.32		0.1	
a2	1.25	1.45			



BR

CW7806

Note:

BR: Company Code.

CW7806: Product Type.

****: Lot No. Code, code change with Lot No.

