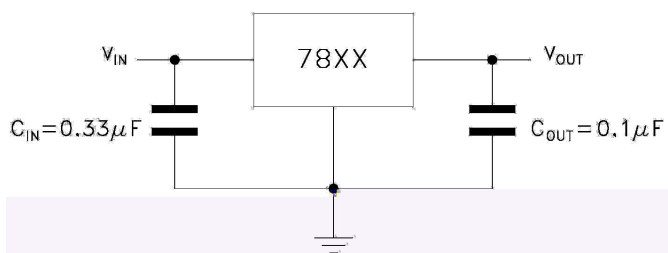


/ Descriptions

/ Features

/ Applications

/ / Equivalent Circuit or Application Circuit



/ Pinning



/ Marking

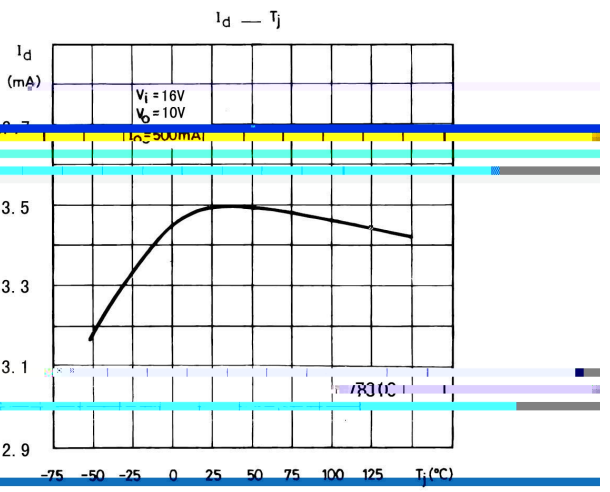
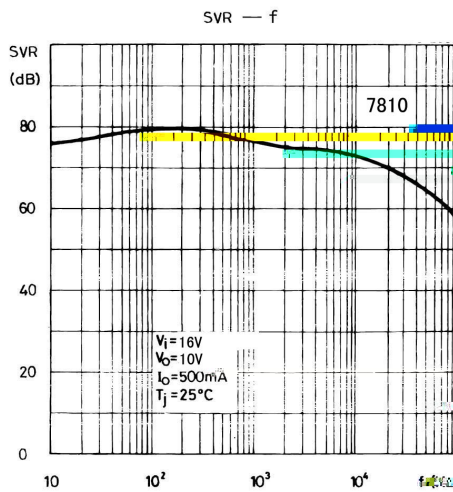
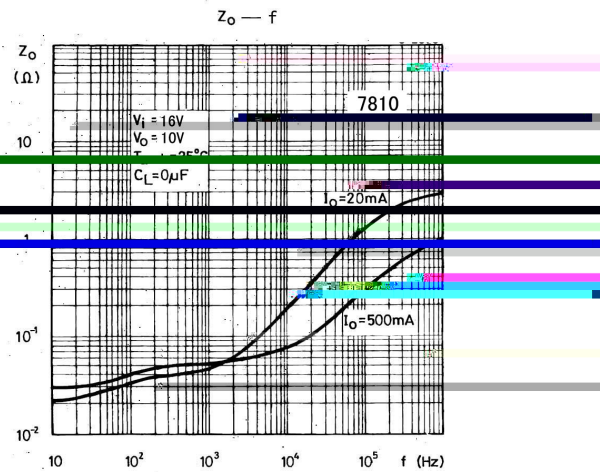
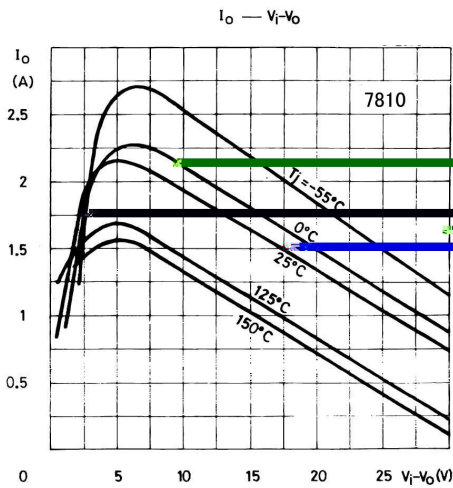
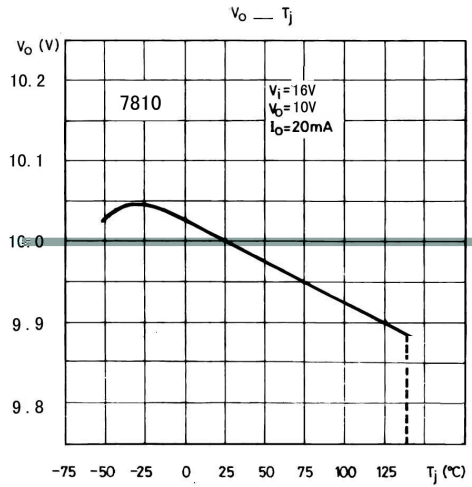
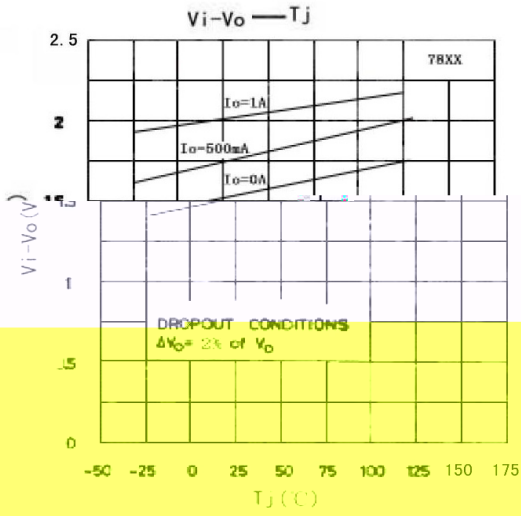
/ Absolute Maximum Ratings(Ta=25)

	θ		
	θ		

/ Electrical Characteristics(Ta=25 Vi=16V,Io=500mA unless otherwise specified)

		$^{\circ}\text{C}$				
		\approx				
						μ
						Ω

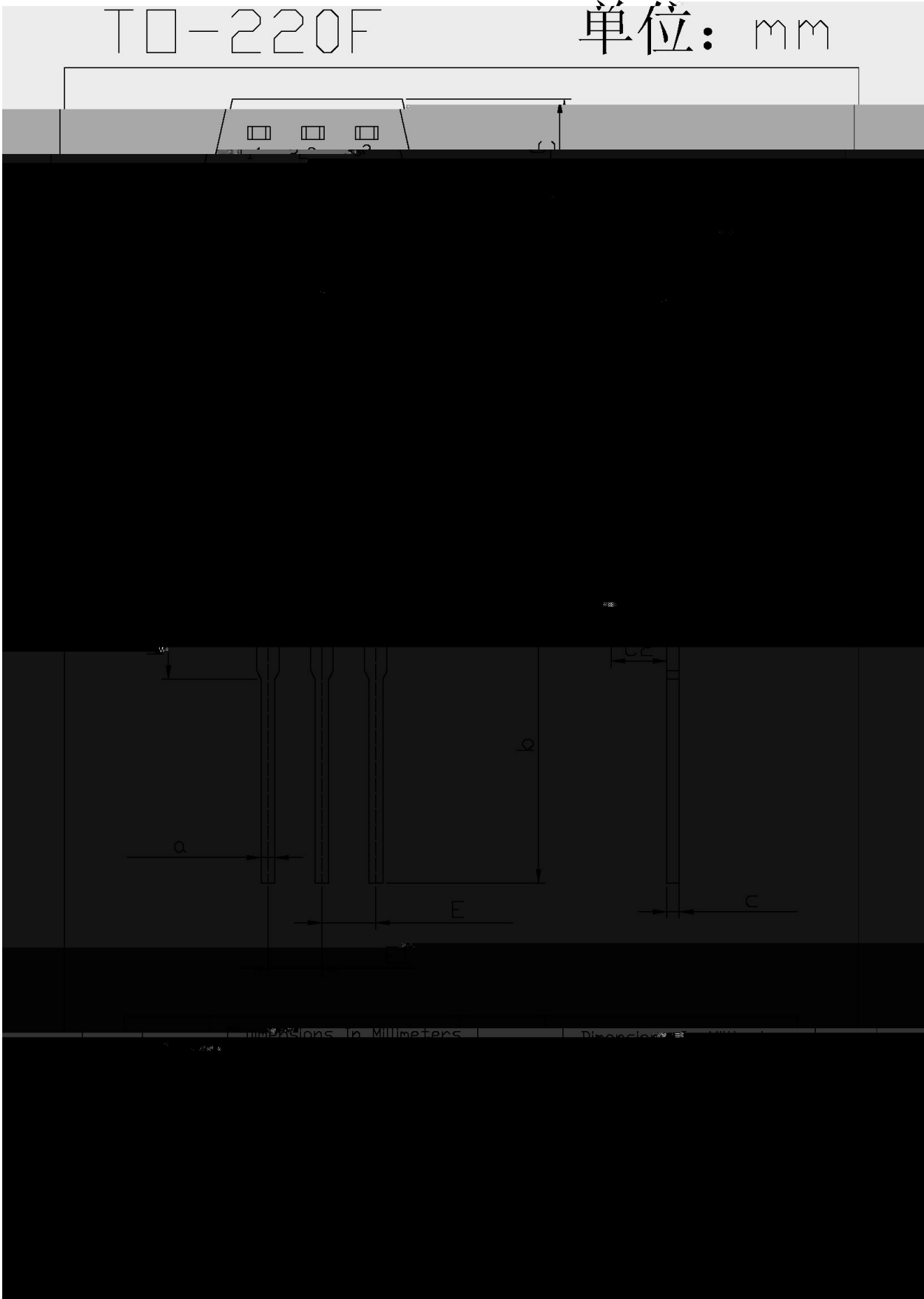
/ Electrical Characteristic Curve



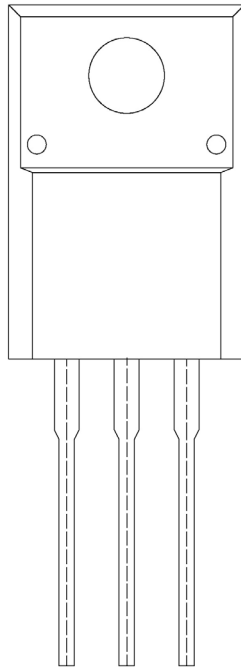
/ Package Dimensions

TO-220F

单位: mm



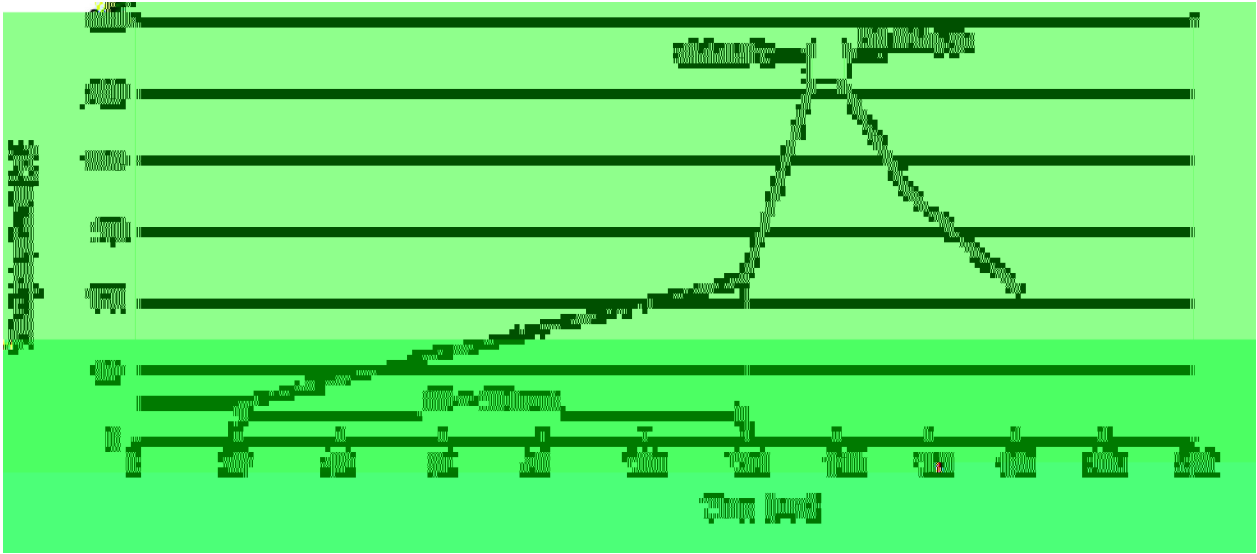
/ Marking Instructions



BR

. / (' =

() / Temperature Profile for Dip Soldering(Pb-Free)



± ± ± ±

/ Resistance to Soldering Heat Test Conditions

± ± °C

/ Packaging SPEC.

封装形式	包装数量				包装尺寸	:
	只袋	袋盒	只盒	盒箱		