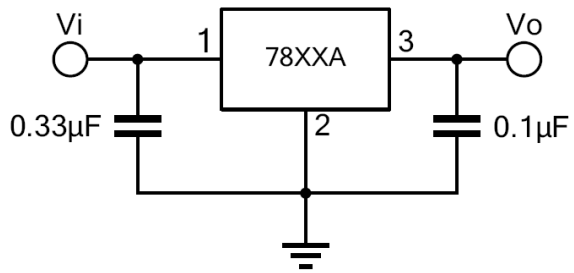


/ Descriptions

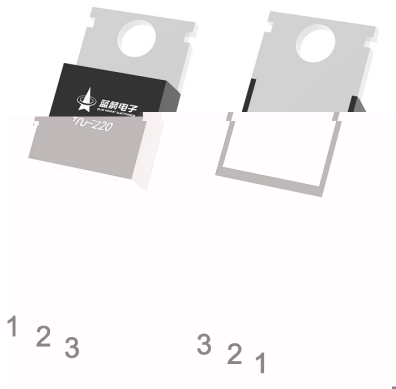
/ Features

/ Applications

/ / Equivalent Circuit or Application Circuit



/ Pinning



/ Marking

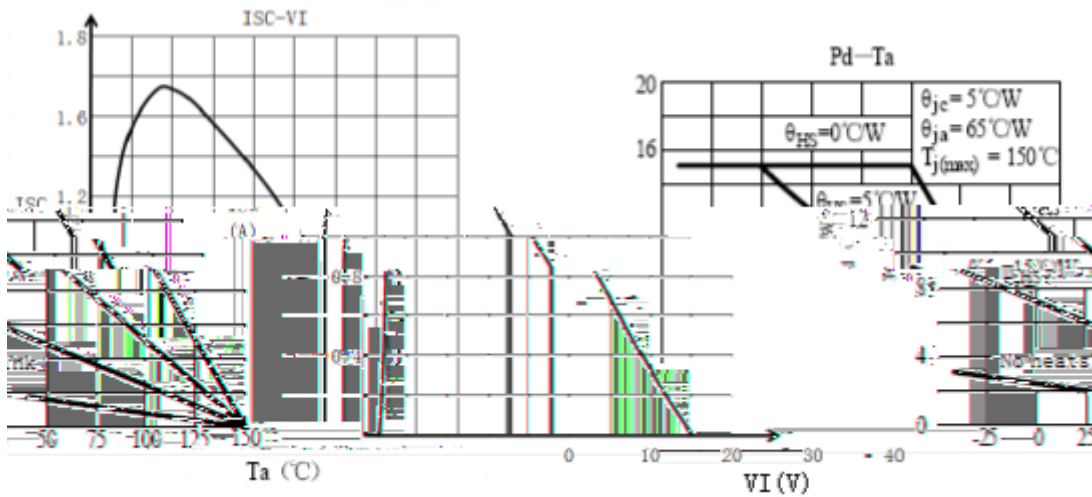
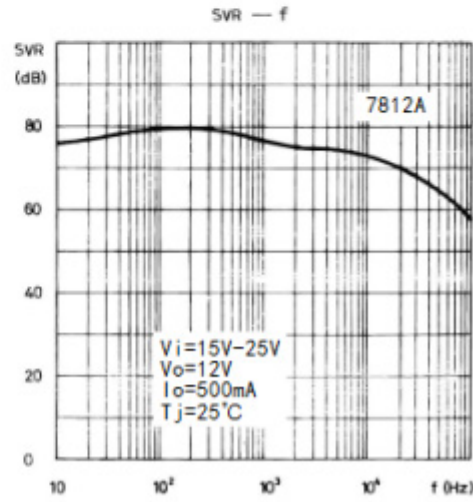
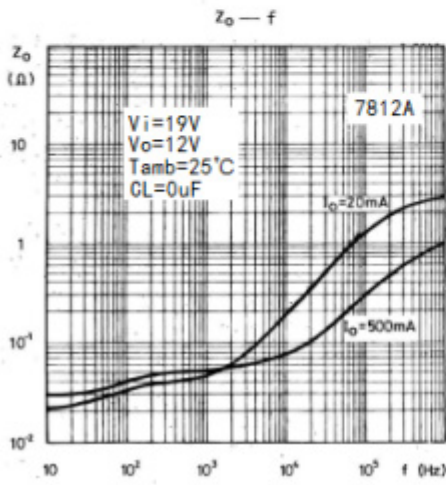
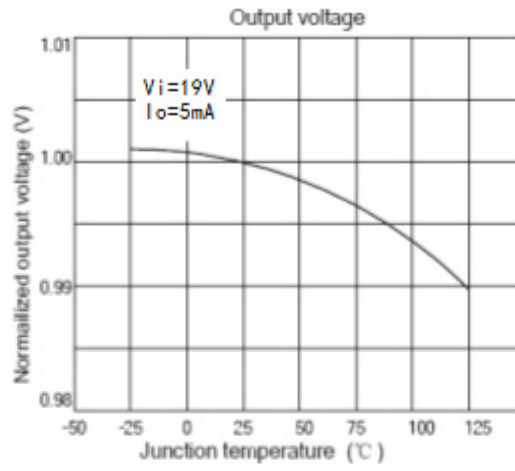
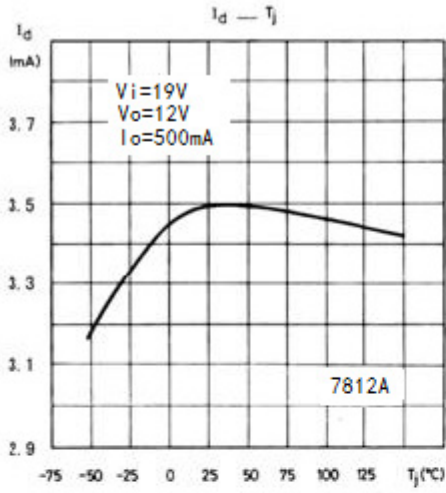
/ Absolute Maximum Ratings(Ta=25)

		~	
		~	

/ Electrical Characteristics(Vi=19V,Io=500mA,Tj=-30 ~125 ,unless otherwise specified

	Δ	°C				
	Δ					
		°C				
	Δ					
	Δ Δ	°C				
		°C				
		°C				
		°C				

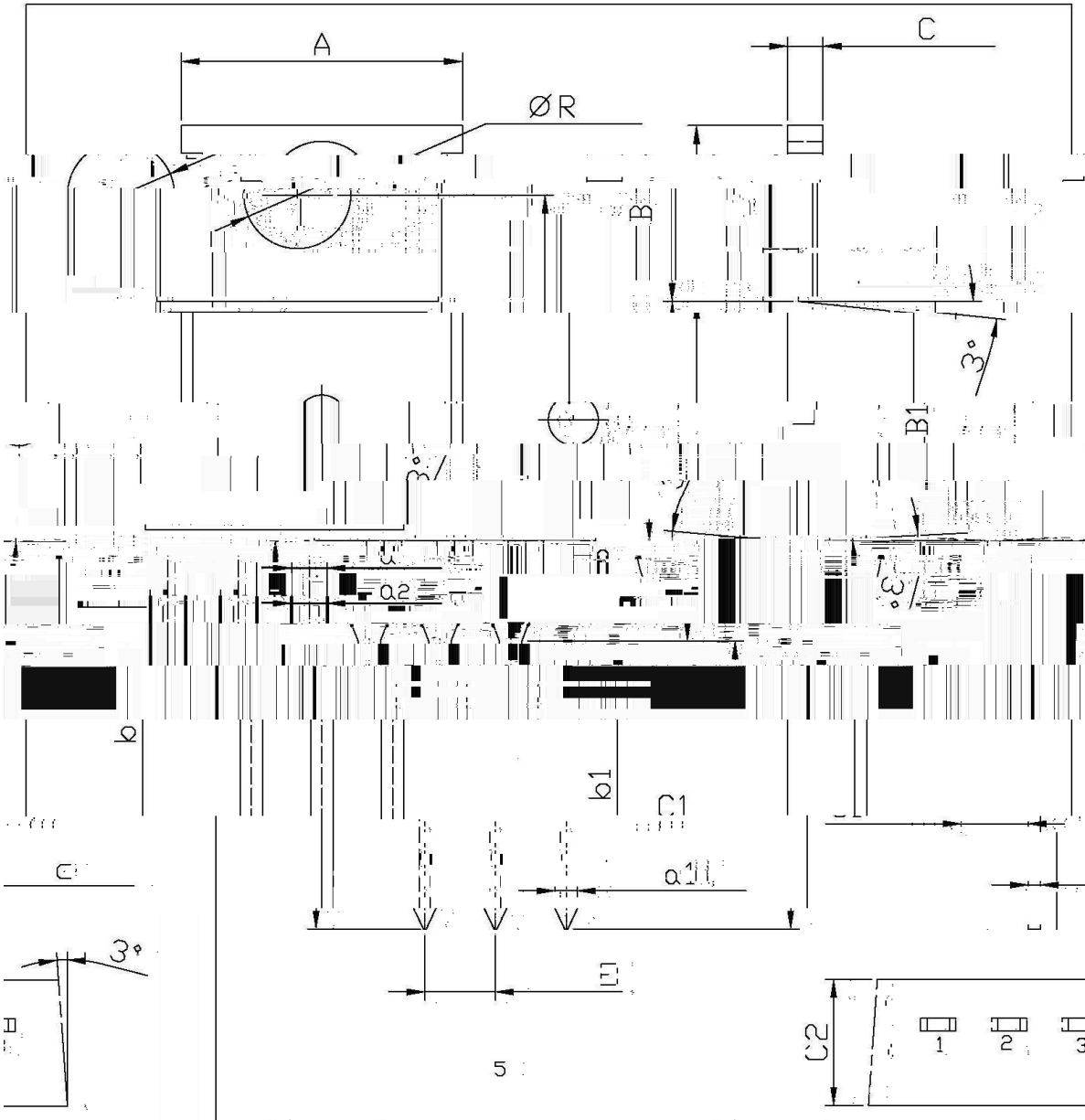
/ Electrical Characteristic Curve



/ Package Dimensions

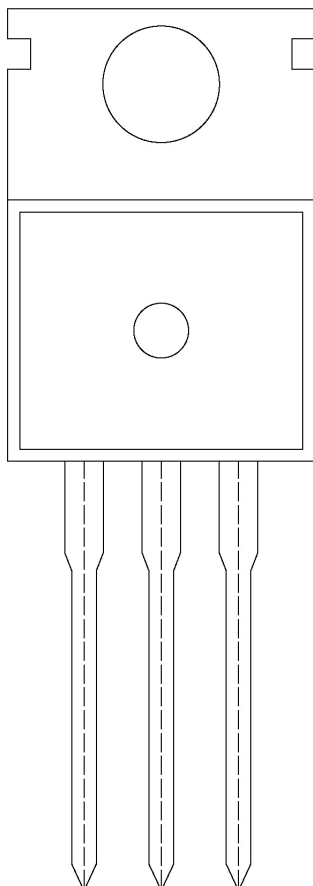
T0-220

单位: mm

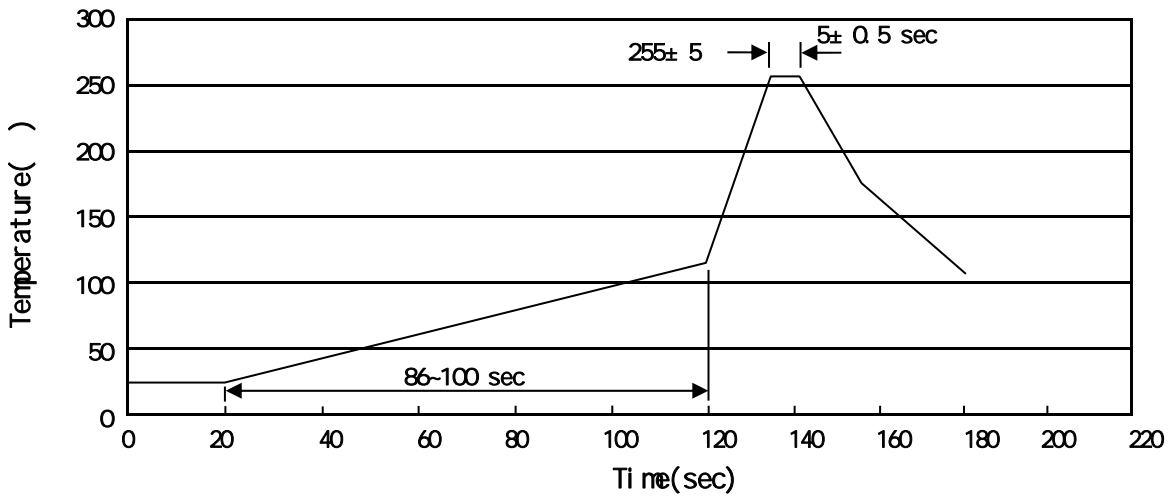


Dimensions In Millimeters		Dimensions In Millimeters	
Max	Symbol	Min	Symbol
1.4	A	9.8	C
6.7	R	3.56	B
9.4		15.7	B1
2.6	b	12.6	c
			C2

/ Marking Instructions



() / Temperature Profile for Dip Soldering(Pb-Free)



± ± ± ±

/ Resistance to Soldering Heat Test Conditions

± ±

/ Packaging SPEC.

	Units/Bag /	Bags/Inner Box /	Units/Inner Box /	Inner Boxes/Outer Box /	Units/Outer Box /	Bag	Inner Box	Outer Box

	Units/Tube /	Tubes/Inner Box /	Units/Inner Box /	Inner Boxes/Outer Box /	Units/Outer Box /	Tube	Inner Box	Outer Box

