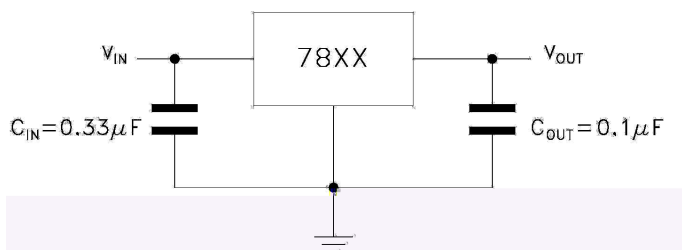


/ Descriptions

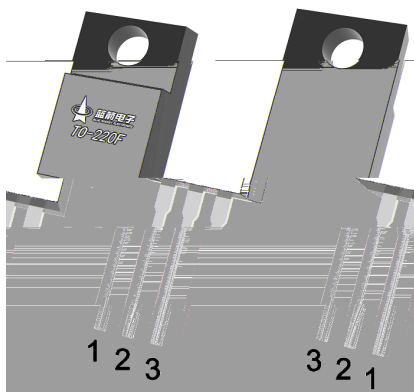
/ Features

/ Applications

/ / Equivalent Circuit or Application Circuit



/ Pinning



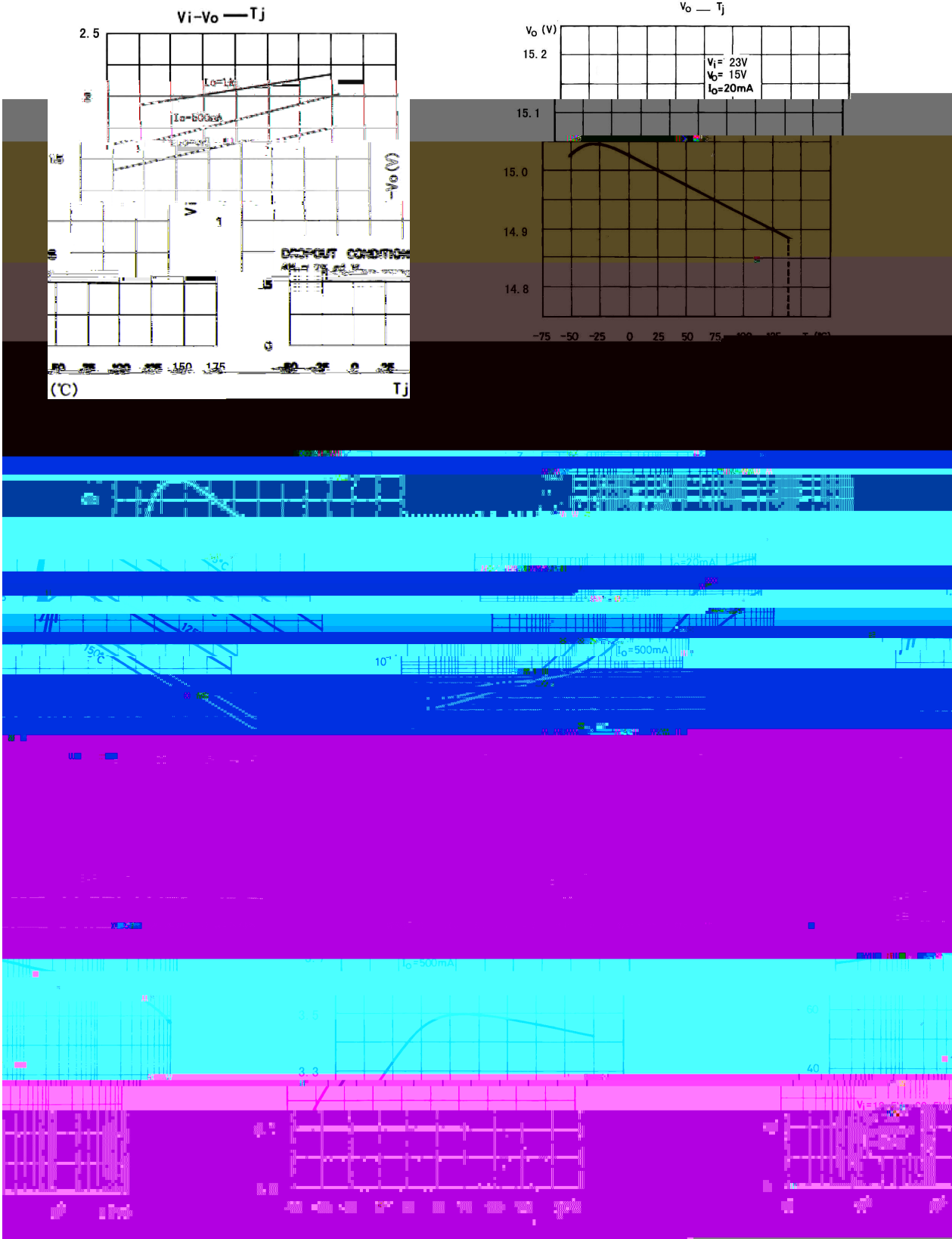
/ Marking

	θ		
	θ		

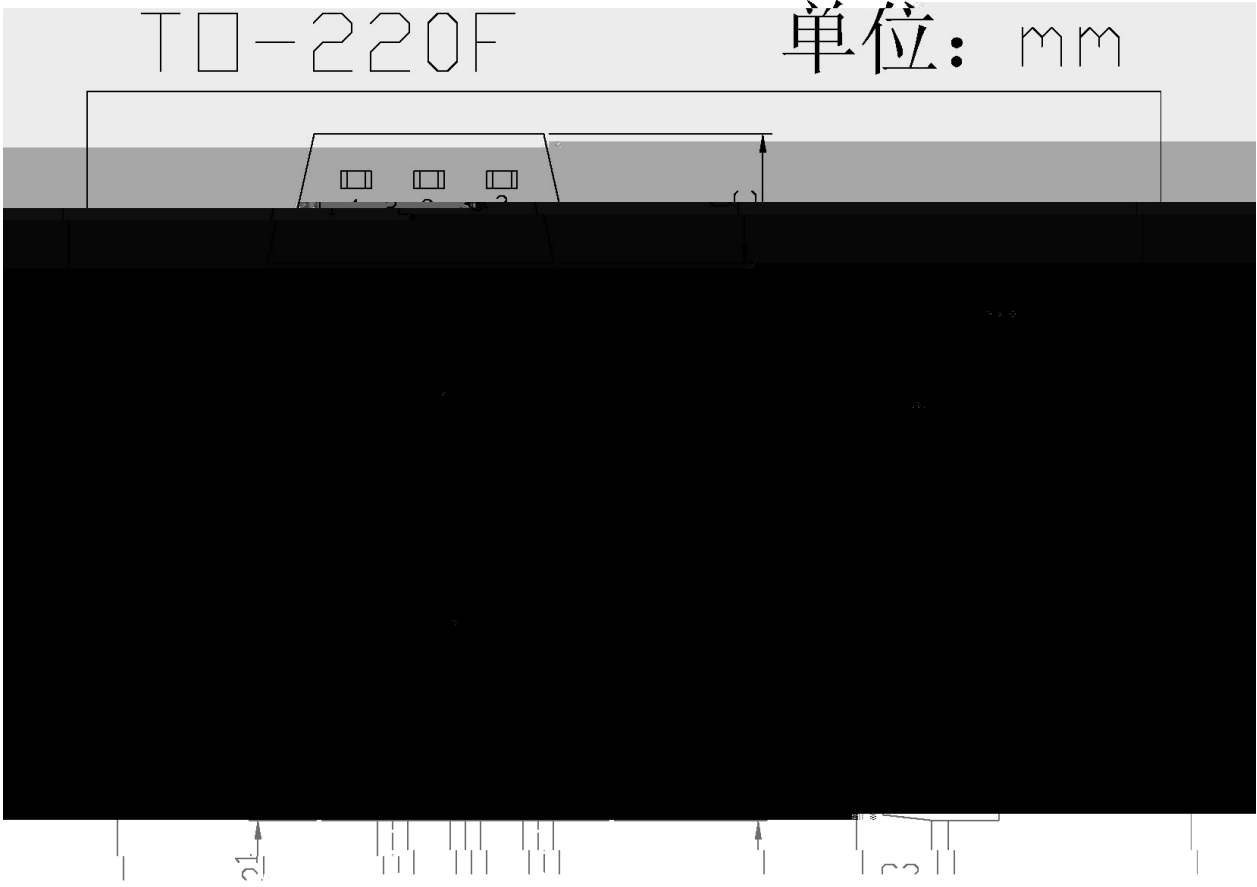
		V				
						μ

Ω

/ Electrical Characteristic Curve

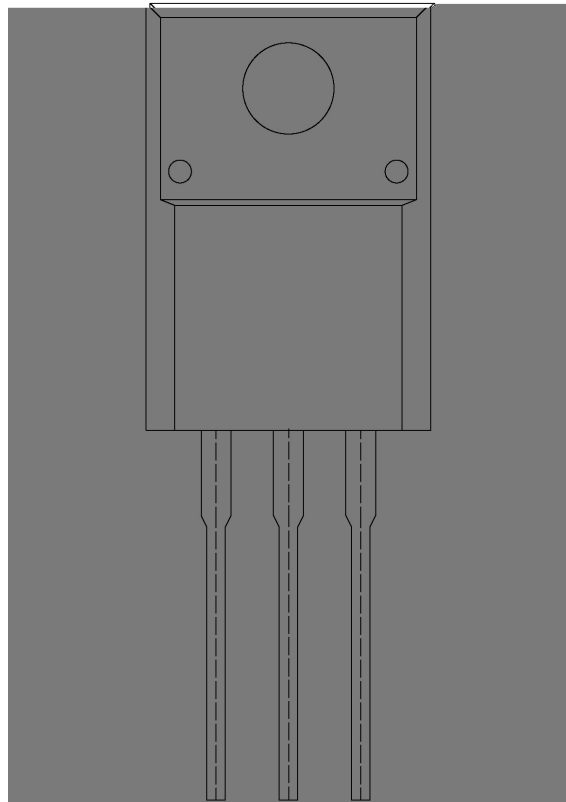


/ Package Dimensions



Symbol	Min	Max	Symbol	Min	Max
C	4.3	4.7	b1	2.9	3.9
A	9.7	10.3	a	0.55	0.75
B	14.7	15.3	E	2.29	2.79
B1	3.0	4.0	E1	2.29	2.79
B2	2.9	3.1	C1	2.5	2.9
R	3.0	3.4	C2	2.5	2.7
b	12.5	13.5	c	0.5	0.7

/ Marking Instructions



() / Temperature Profile for Dip Soldering(Pb-Free)

/ Resistance to Soldering Heat Test Conditions

/ Packaging SPEC.

	Units/Bag /	Bags/Inner Box /	Units/Inner Box /	Inner Boxes/Outer Box /	Units/Outer Box /	Bag
--	----------------	---------------------	----------------------	----------------------------	----------------------	-----