

/ Descriptions

SOT-89 Voltage Regulator in a SOT-89 Plastic Package.

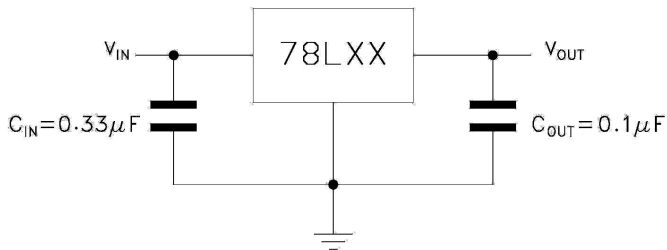
/ Features

100mA,
3-Terminal regulators ,output current up to 100 mA, internal thermal overload protection and short-circuit limiting, HF Product.

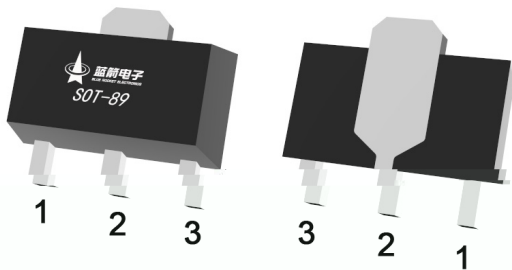
/ Applications

Voltage Regulator.

/ Equivalent Circuit or Application Circuit



/ Pinning



PIN1 OUT PIN 2 GND PIN 3 IN

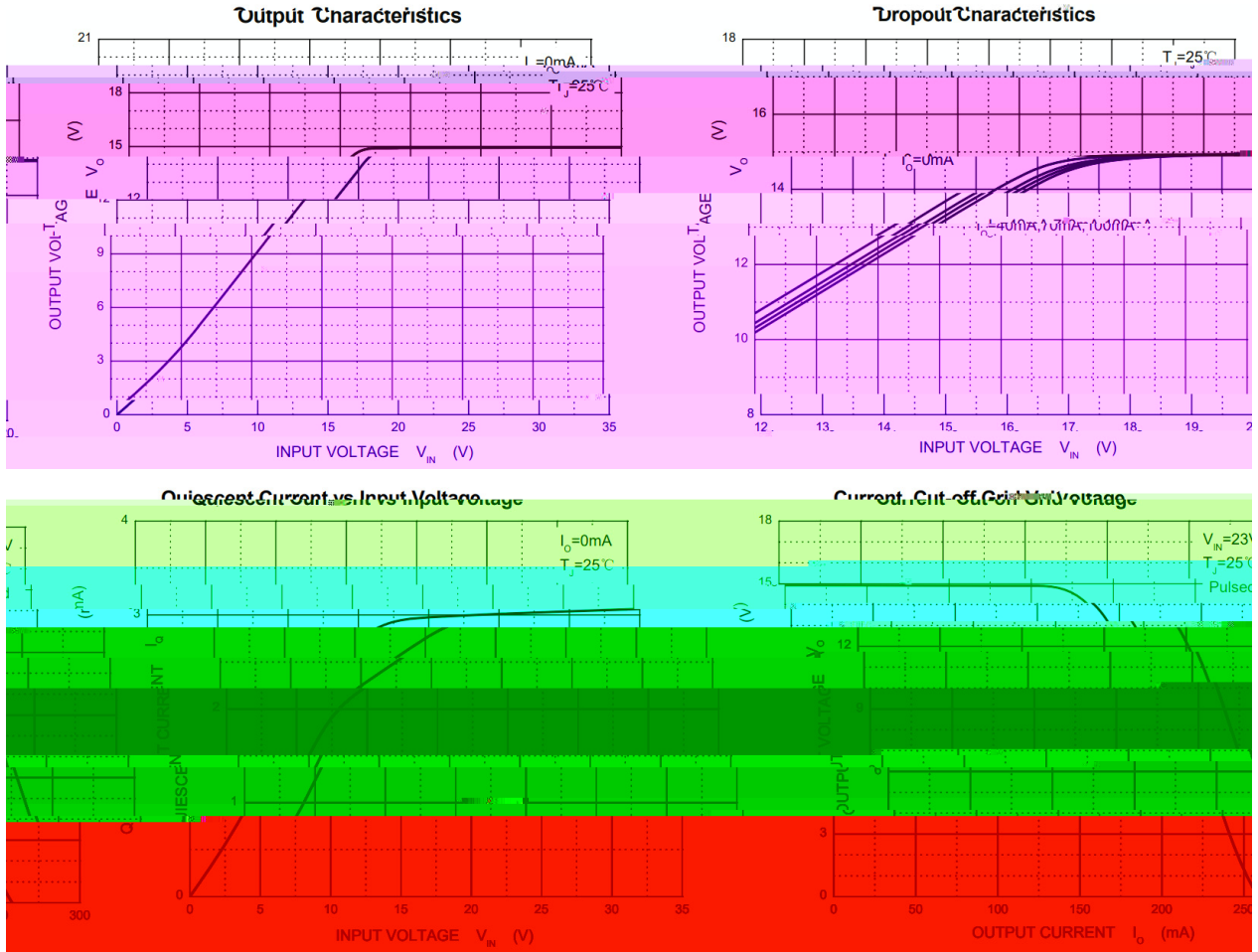
/ Marking

See Marking Instructions.

Parameter	Symbol	Rating	Unit
Input voltage	V_I	35	V
Output current	I_O	100	mA
Operating Temperature Range	T_{OPR}	-40 125	
Power Dissipation	P_D	500	mW
Storage temperature range	T_{stg}	-65 150	

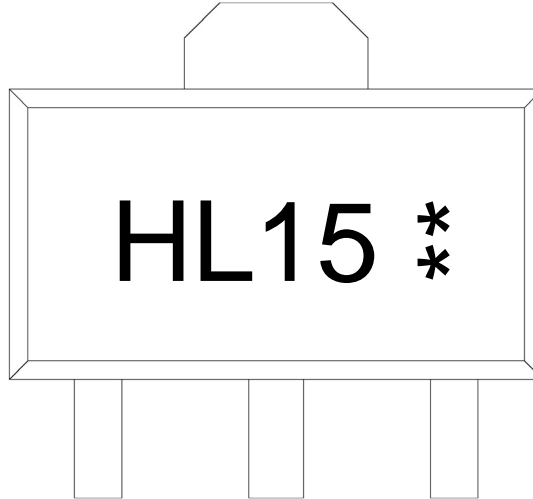
Parameter	Symbol	Test Conditions	Min	Typ	Max	Unit
Output voltage	V_O	$I_O = 40mA \quad T_j = 25$	14.4	15	15.6	V
		$I_O = 1mA \text{ to } 40mA$ $V_I = 17.5V \text{ to } 30V$	14.25		15.75	V
		$I_O = 1mA \text{ to } 70mA$ $V_I = 23V$	14.25		15.75	V
Input regulation	V_O	$V_I = 17.5V \text{ to } 30V \quad T_j = 25$ $V_I = 20V \text{ to } 30V \quad T_j$			300	mV

/ Electrical Characteristic Curve



78L15T
Rev.B Jun.-2024

/ Marking Instructions



H

L15

**

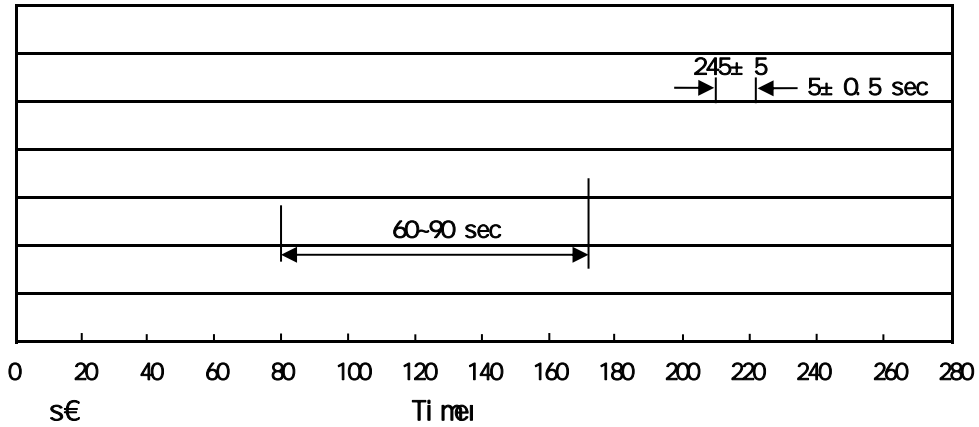
Note:

H: Company Code

L15: Product Type Code

** : Lot No. Code, code change with Lot No

() / Temperature Profile for IR Reflow Soldering(Pb-Free)



- a 5
- | | | | |
|---|---------|-----------|---|
| 1 | 150 180 | 60 90sec; | Note: 1.Preheating:150~180 , Time:60~90sec. |
| 2 | 245±5 | 5±0.5sec; | 2.Peak Temp.:245±5 , Duration:5±0.5sec. |
| 3 | 2 10 | /sec. | 3. Cooling Speed: 2~10 /sec. |

/ Resistance to Soldering Heat Test Conditions

260±5 10±1 sec. Temp.:260±5 Time:10±1 sec

/ Packaging SPEC.

/ REEL

Package Type	Units					Dimension (unit mm ³)		
	1,000	7	7,000	6	42,000	7 x12	180x120x180	390x385x205
SOT-89	1,000	7	7,000	6	42,000	7 x12	180x120x180	390x385x205

/ Notices