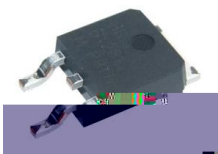


描述 / Descriptions

0.5A,

内部等效电路/应用电路 / Equivalent Circuit or Application Circuit



印章代码 / Marking

。



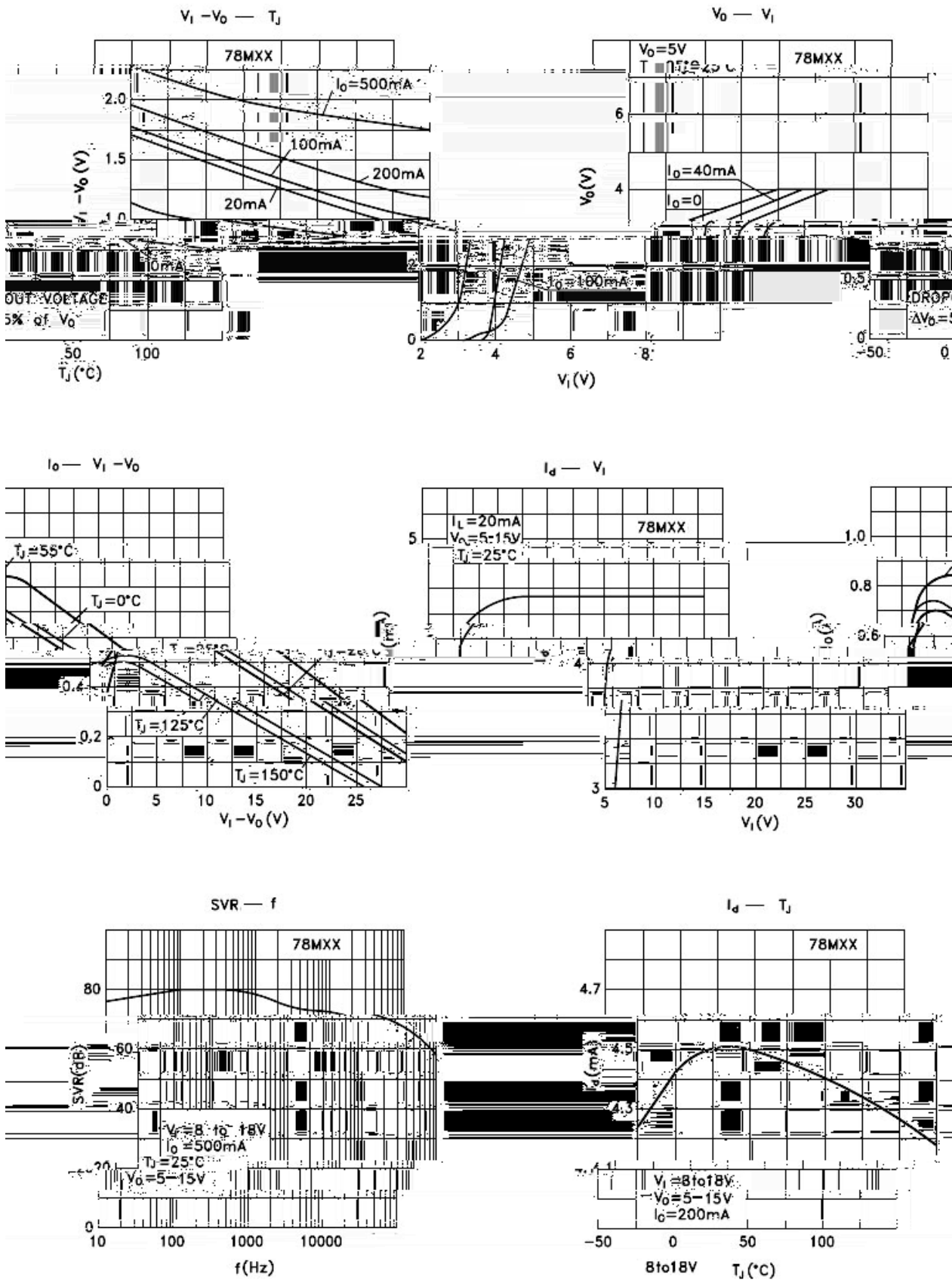
极限参数 / Absolute Maximum Ratings(Ta=25°C)

			°C
			°C
		~	°C
		~	°C

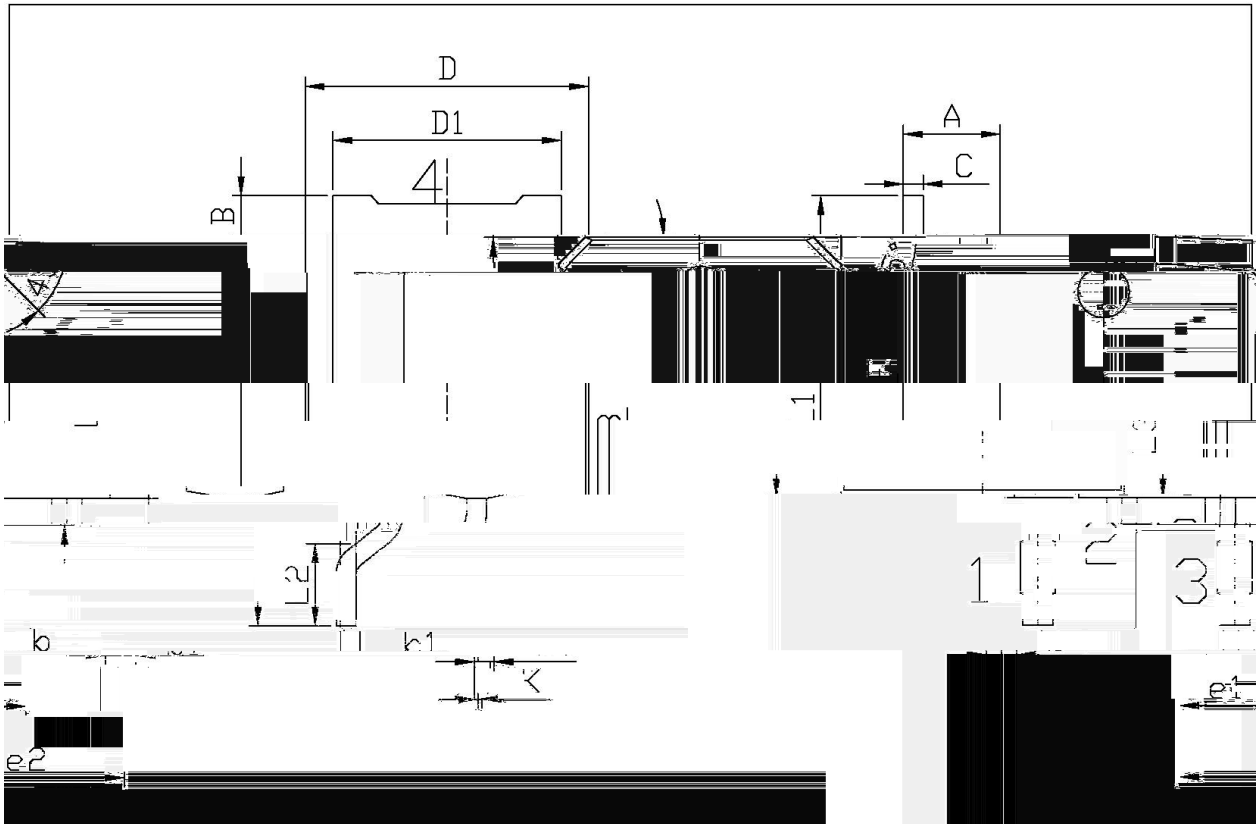
电性能参数 / Electrical Characteristics(Ta=25°C ,Vi=10V,Io=350mA , unless otherwise specified)

	Δ					
	Δ	°C				
		°C				
		°C				
		°C				
	Δ					
	Δ Δ					°C
		°C				
		°C				

电参数曲线图 / Electrical Characteristic Curve



外形尺寸图 / Package Dimensions

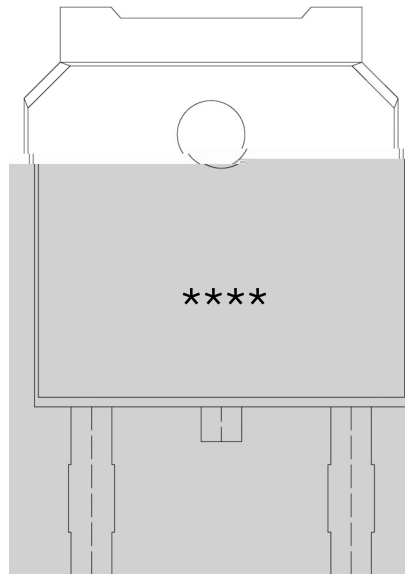


单位: mm

Symbol	Dimensions In Millimeters		Symbol	Dimensions In Millimeters	
	Max	Min		Max	Min
6.25	A	2.20	2.40	E	5.95
0.30	K	0.35	L2	1.70	2.00
1.13	b	1.70	L3	0.60	0.90
10.25	b1	10.50	L1	0.00	0.10
C	0.45	0.55	L2	1.70	2.00
D	6.45	6.75	L3	0.60	0.90
D1	5.10	5.50	K	0.00	0.10

TO-252

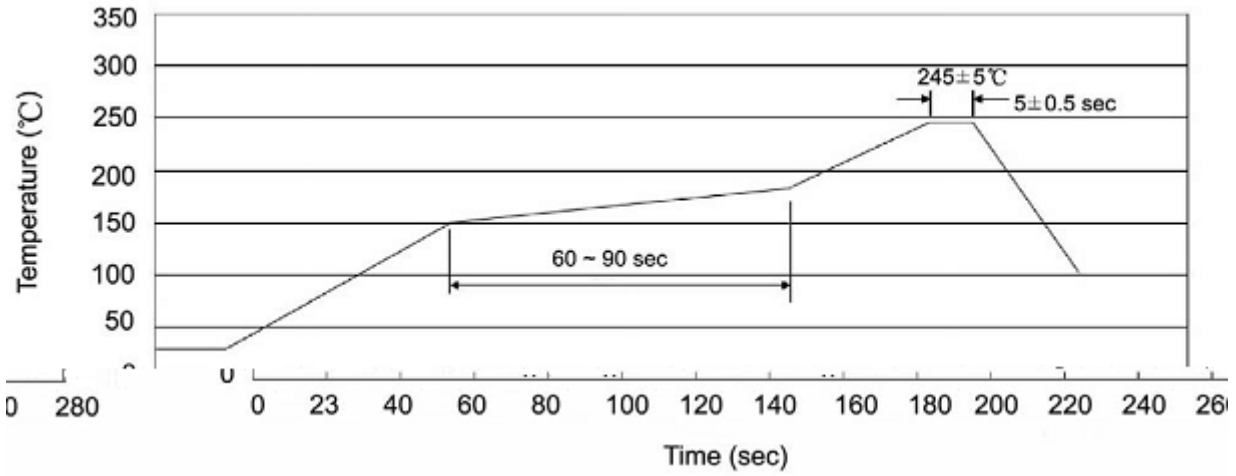
印章说明 / Marking Instructions



BR

78M05

回流焊温度曲线图(无铅) / Temperature Profile for IR Reflow Soldering(Pb-Free)



± ± ± ±

耐焊接热试验条件 / Resistance to Soldering Heat Test Conditions

± ±

包装规格 / Packaging SPEC.

封装形式	包装数量					包装尺寸 :		
	Units/Reel 只/卷盘	Reels/Inner Box 卷盘/盒	Units/Inner Box 只/盒	Inner Boxes/Outer Box 盒/箱	Units/Outer Box 只/箱	Reel	Inner Box 盒	Outer Box 箱
TO-252	2,500	2	5,000	6	30,000	13" ×16	360×360×50	380×335×366

封装形式	包装数量					包装尺寸 :		
	Units/Tube 只/套管	Tubes/Inner Box 套管/盒	Units/Inner Box 只/盒	Inner Boxes/Outer Box 盒/箱	Units/Outer Box 只/箱	Tube 套管	Inner Box 盒	Outer Box 箱
TO-251/252	75	48	3,600	5	18,000	526×20.5×5.25	555×164×50	575×290×180

使用说明 / Notices