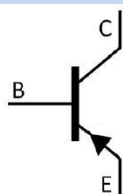


/ Descriptions

/ Features

/ Applications

/ Equivalent Circuit



/ Pinning

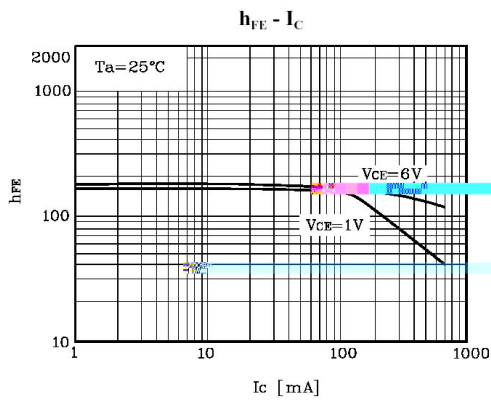
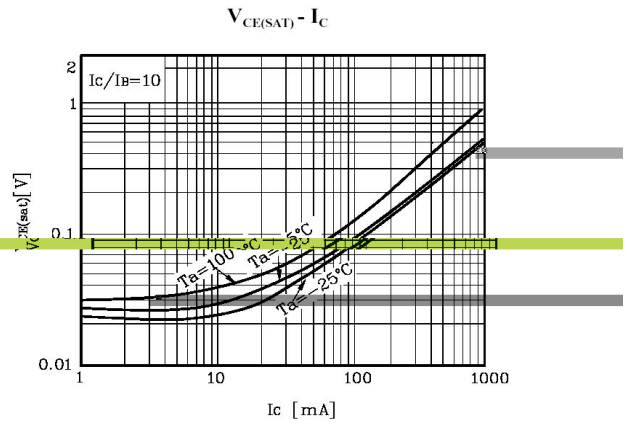
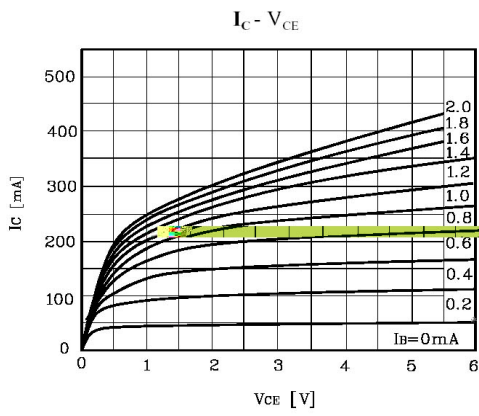
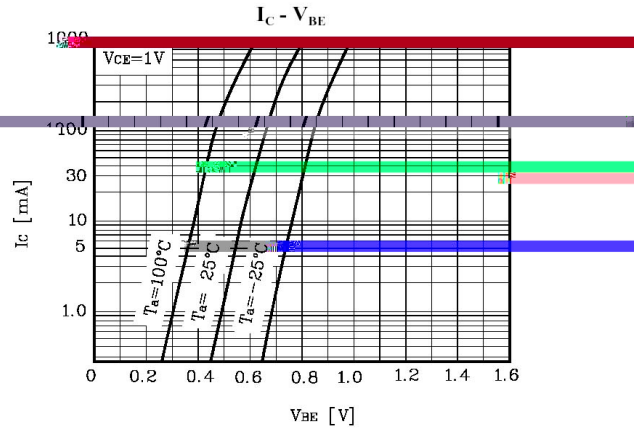
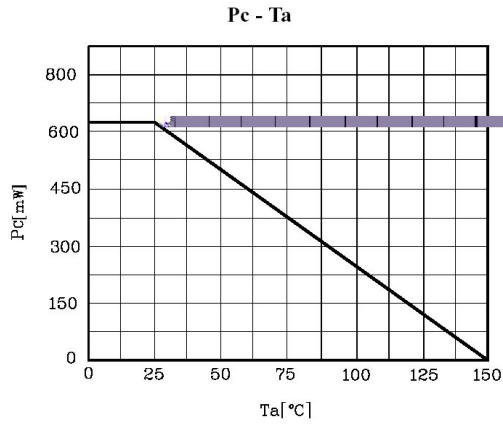


/ h_{FE} Classifications & Marking

/ Absolute Maximum Ratings(Ta=25)

/ Electrical Characteristics(Ta=25)

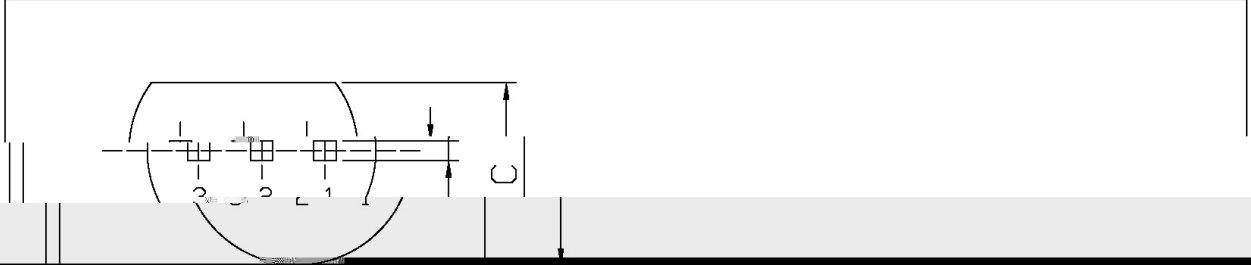
/ Electrical Characteristic Curve



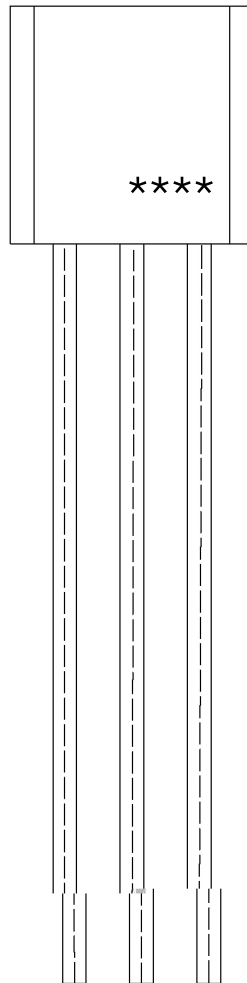
/ Package Dimensions

T0-92

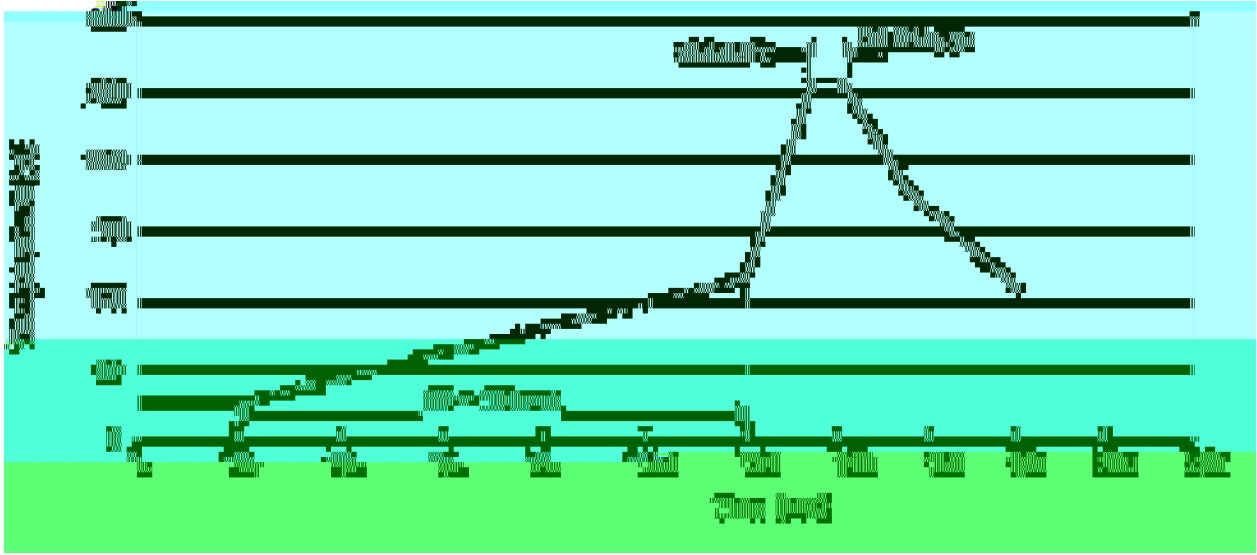
Unit: mm



/ Marking Instructions



() / Temperature Profile for Dip Soldering(Pb-Free)



/ Resistance to Soldering Heat Test Conditions

/ Packaging SPEC.