

/ Descriptions

0.8A ABS/LBF
0.8A Surface Mount Glass Passivated Bridge Rectifier, ABS/LBF thin package.

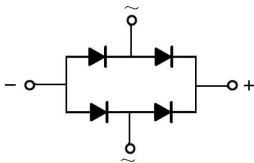
/ Features

Glass Passivated Chip Junction, Reverse Voltage :100 to 1000V, Forward Current: 0.8A, High Surge Current Capability, Designed for Surface Mount Application. Halogen free product.

/ Applications

General purpose.

/ Equivalent Circuit

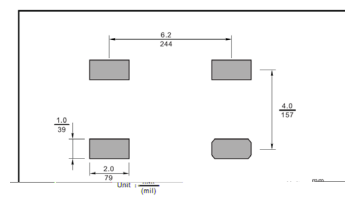


/ Pinning



PIN	DESCRIPTION
1	Input Pin (~)
2	Input Pin (~)
3	Output Anode (+)
4	Output Cathode (-)

The recommended mounting pad size



/ Marking

See Marking Instructions.

/ Absolute Maximum Ratings(Ta=25)

Parameter	Symbol	Rating						Unit
		ABS1	ABS2	ABS4	ABS6	ABS8	ABS10	
Maximum Repetitive Peak Reverse Voltage	V_{RRM}	100	200	400	600	800	1000	V
Maximum RMS voltage	V_{RMS}	70	140	280	420	560	700	V
Maximum DC Blocking Voltage	V_{DC}	100	200	400	600	800	1000	V
Average Rectified Output Current at Ta = 40 ° C	I_o	0.8						A
Peak Forward Surge Current 8.3 ms Single Half Sine Wave Superimposed on Rated Load (JEDEC Method)	I_{FSM}	30						A
Typical Junction Capacitance ^(Note1)	C_i	13						pF
Typical Thermal Resistance ^(Note2)	$R_{\theta JA}$	85						°C/W
	$R_{\theta JL}$	30						°C/W
Operating and Storage Temperature Range	T_j, T_{stg}	-55~150						°C

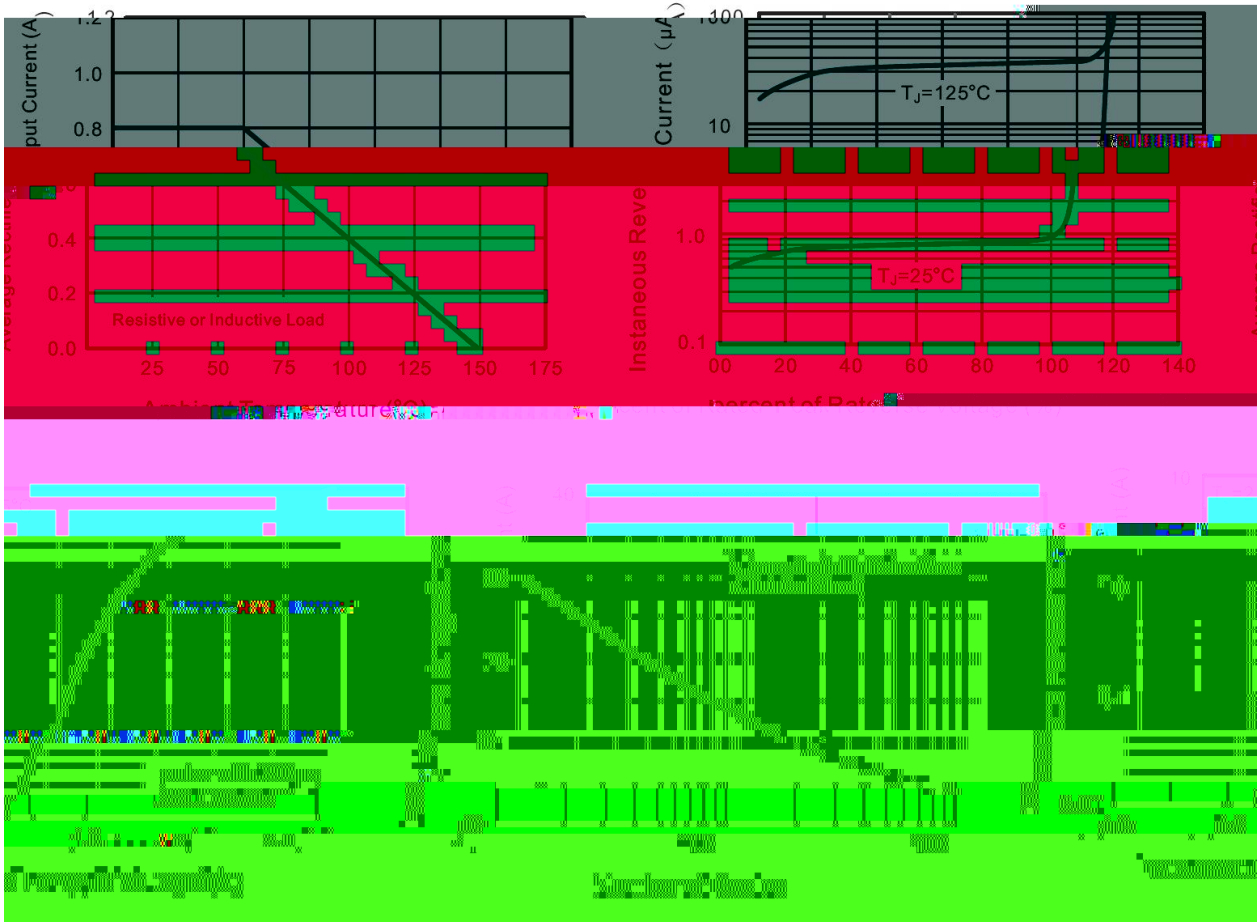
Note:

1. Measured at 1MHz and applied reverse voltage of 4 V D.C.
2. Mounted on glass epoxy PC board with $4 \times (5 \times 5mm^2)$ copper pad.

/ Electrical Characteristics(Ta=25)

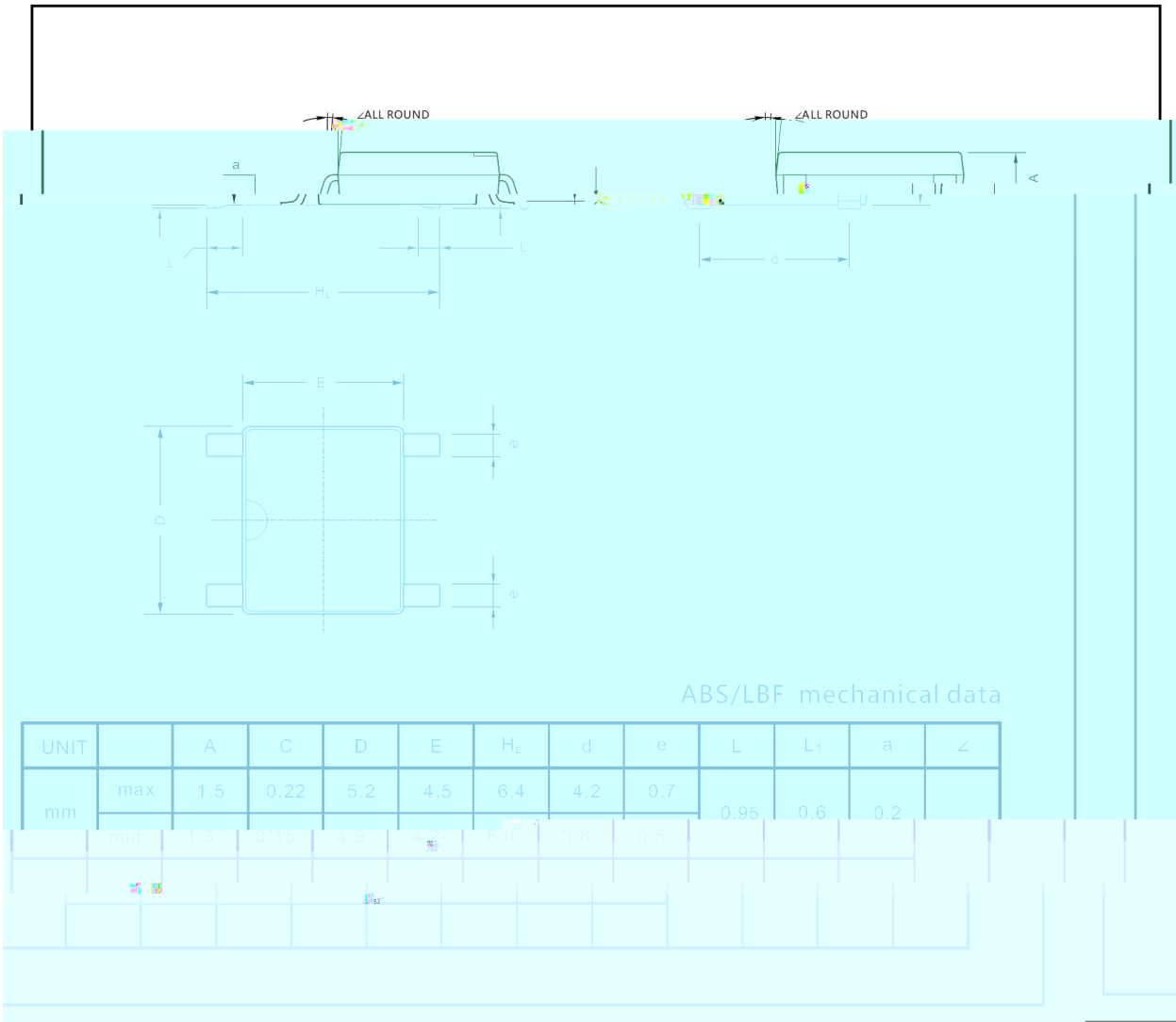
Parameter	Symbol	Test Conditions	Rating	Unit
Forward Voltage per element	V_F	$I_F=0.4A$	1.0	V
		$I_F=0.8A$	1.1	
Maximum DC Reverse Current at Maximum DC Blocking Voltage	I_R	$T_a=25^\circ C$	5.0	μA
		$T_a=100^\circ C$	50	
		$T_a=125^\circ C$	100	

/ Electrical Characteristic Curve



/ Package Dimensions

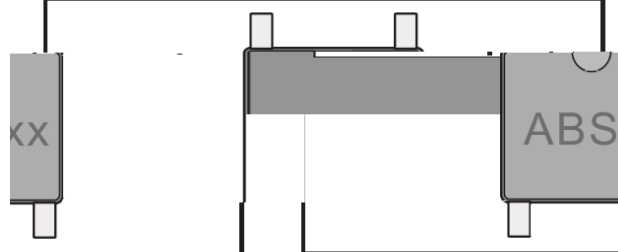
ABS/LBF



/ Marking Instructions

Marking

Type number	Marking code
ABS1	ABS1
ABS2	ABS2
ABS4	ABS4
ABS6	ABS6
ABS8	ABS8
ABS10	ABS10



/ Marking Instructions



ABS1

1 *

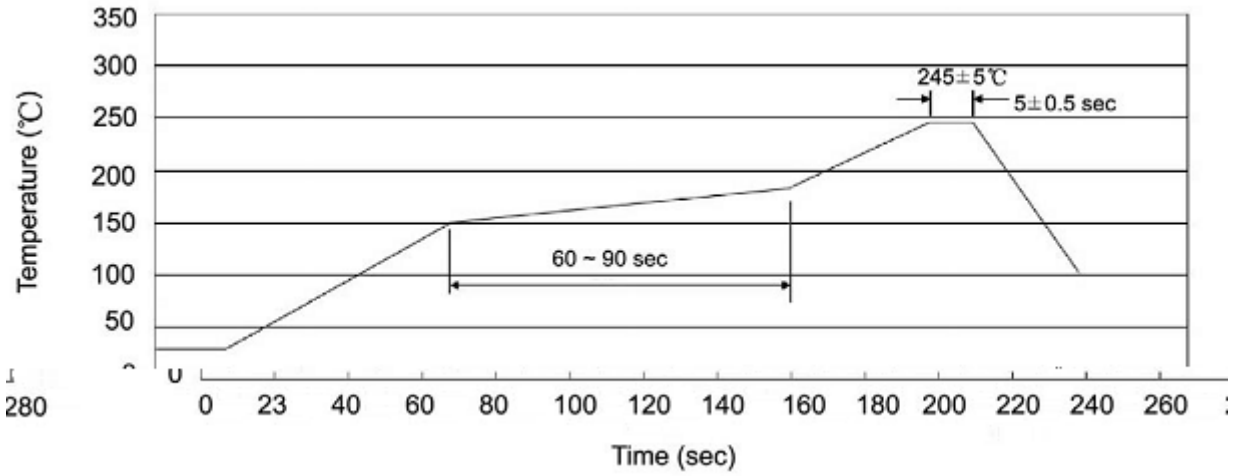
3 *

Note:

ABS1 Product Type Code

**** Lot No. Code The 1st * means:YM Code The last 3 * means:little Lot No
Code

() / K\ d g\ i Xk i \ Gif] \ d] fi @ ' l \] fn J f d \ i e ^ Z G Y \$ = i \ \ z



Note:

- | | | | | | |
|---|--------|-----|------------|--------|---|
| 1 | 25 | 150 | 60 | 90sec; | 1.Preheating:25~150 , Time:60~90sec. |
| 2 | 245..5 | | 5..0.5sec; | | 2.Peak Temp.:245..5 , Duration:5..0.5sec. |
| 3 | | 2 | 10 | /sec. | 3. Cooling Speed: 2~10 /sec. |

/ Resistance to Soldering Heat Test Conditions

260..5 10..1 sec. Temp.:260±5 Time:10±1 sec

/ Packaging SPEC.

/ REEL

Package Type	Units					Dimension (unit mm ³)		
	Units/Reel	Reels/Inner Box	Units/Inner Box	Inner Boxes/Outer Box	Units/Outer Box	Reel	Inner Box	Outer Box
ABS/LBF	5000	2	10000	5	50000	13" x15	336X336X40	380X335X366

/ Notices