

/ Descriptions

SOD-323
Schottky Diode in a SOD-323 Plastic Package.

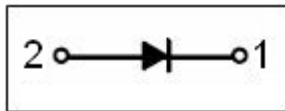
/ Features

low forward voltage drop Low Voltage Rectification Inverse Polarity Protection Low Power Consumption Applications HF Product.

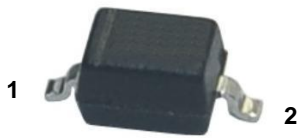
/ Applications

Schottky diode.

/ Equivalent Circuit

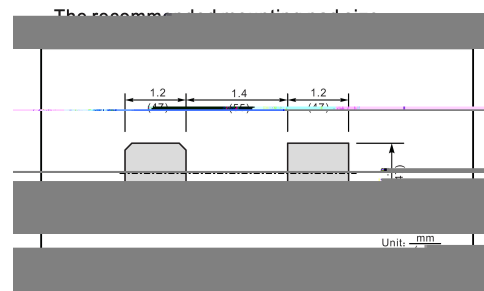


/ Pinning



PIN1:Cathode

PIN2:Anode



/ Marking

Model	B1040WS
Marking	HSZ

Parameter	Symbol	Rating	Unit
Peak Repetitive Reverse Voltage	V_{RRM}	40	V

/ Electrical Characteristic Curve

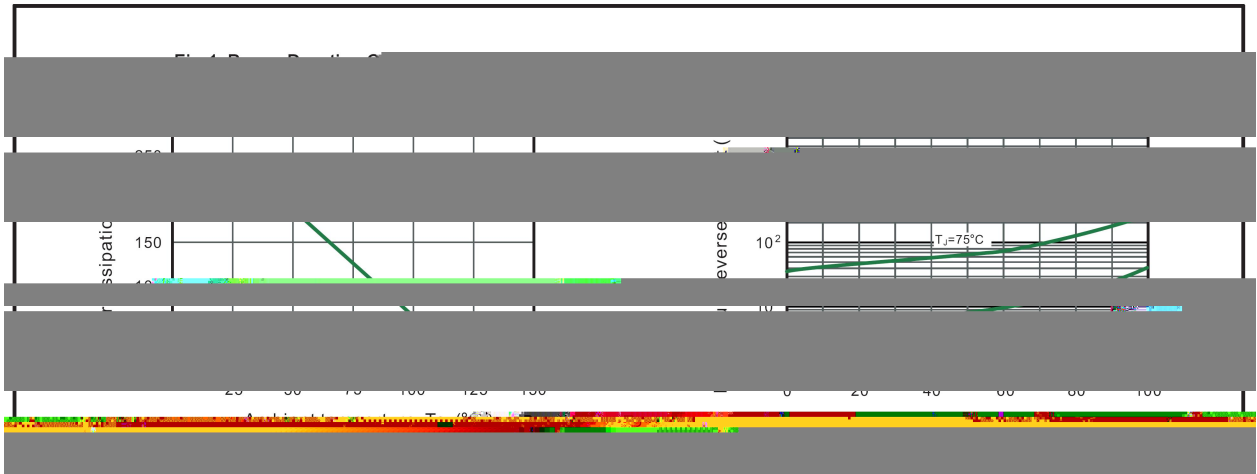


Fig.3 Typical Forward Characteristic

Fig.4 Typical Junction Capacitance

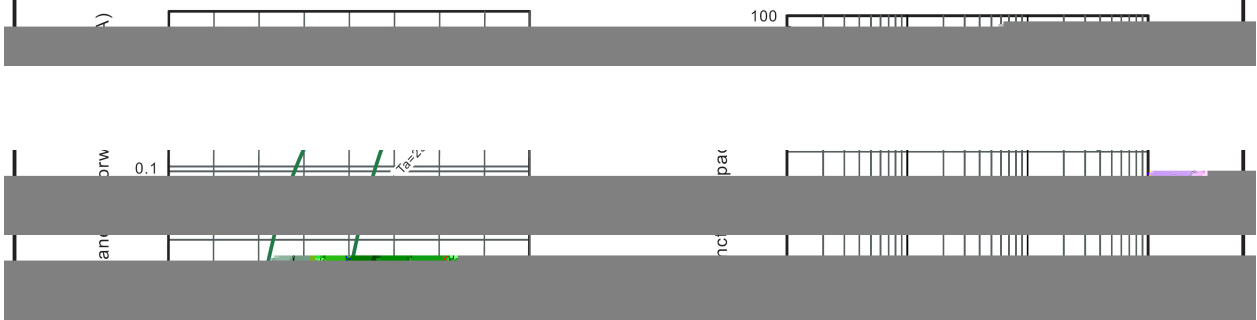
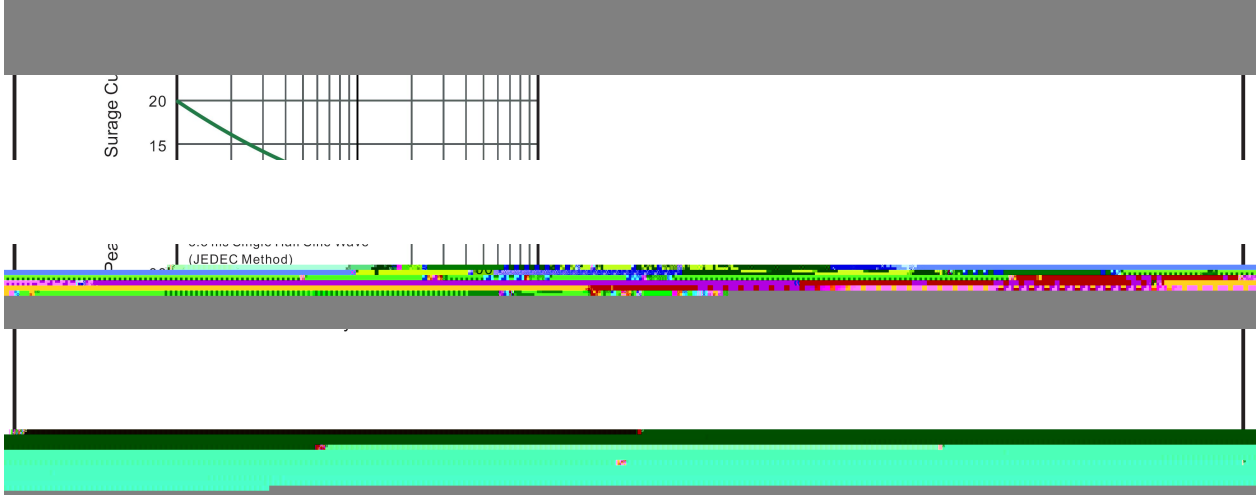
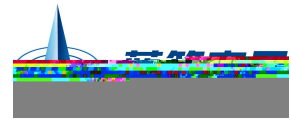
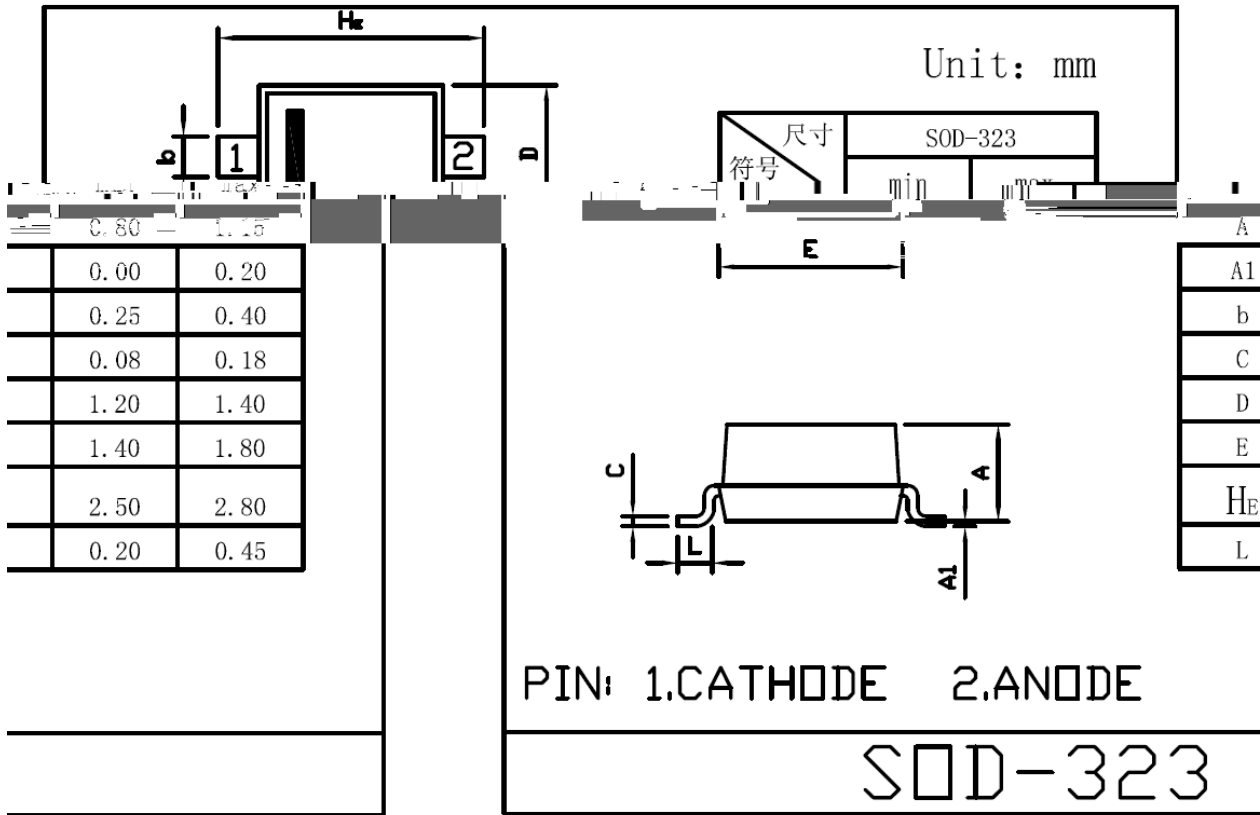


Fig.5 Maximum Surge Current





/ Package Dimensions



0.80	1.25
0.00	0.20
0.25	0.40
0.08	0.18
1.20	1.40
1.40	1.80
2.50	2.80
0.20	0.45

/ Marking Instructions



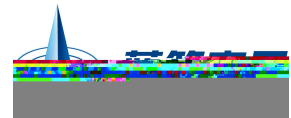
H

SZ:

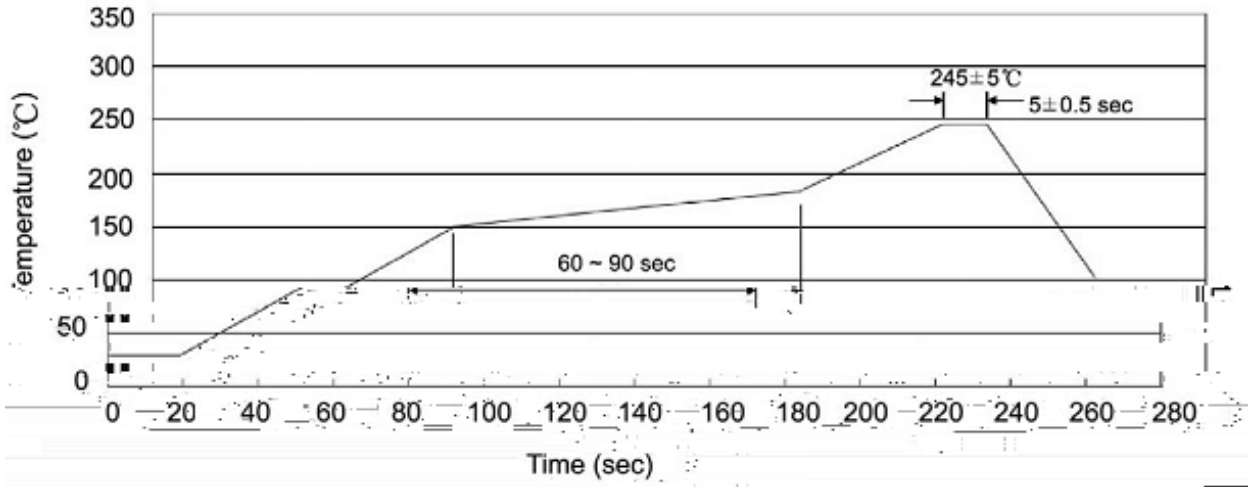
Note:

H: Company Code.

SZ: Product Type.



() / Temperature Profile for IR Reflow Soldering(Pb-Free)



Note:

- | | | | | | |
|---|-------|-----|-------|----------|---|
| 1 | 150 | 180 | 60 | 90sec; | 1.Preheating:150~180 , Time:60~90sec. |
| 2 | 245±5 | | 5±0.5 | sec; | 2.Peak Temp.:245±5 , Duration:5±0.5sec. |
| 3 | | | 2 | 10 /sec. | 3. Cooling Speed: 2~10 /sec. |

/ Resistance to Soldering Heat Test Conditions

260±5 10±1 sec. Temp.:260±5 Time:10±1 sec

/ Packaging SPEC.

Package Type 封装形式	Units 包装数量					Dimension 包装尺寸 (unit: mm ³)	
	只	卷盘	卷盘盒	只盒	盒箱	只箱	盒箱