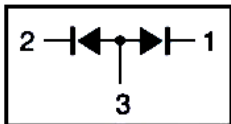


/ Descriptions

/ Features

/ Applications

/ Equivalent Circuit



/ Pinning

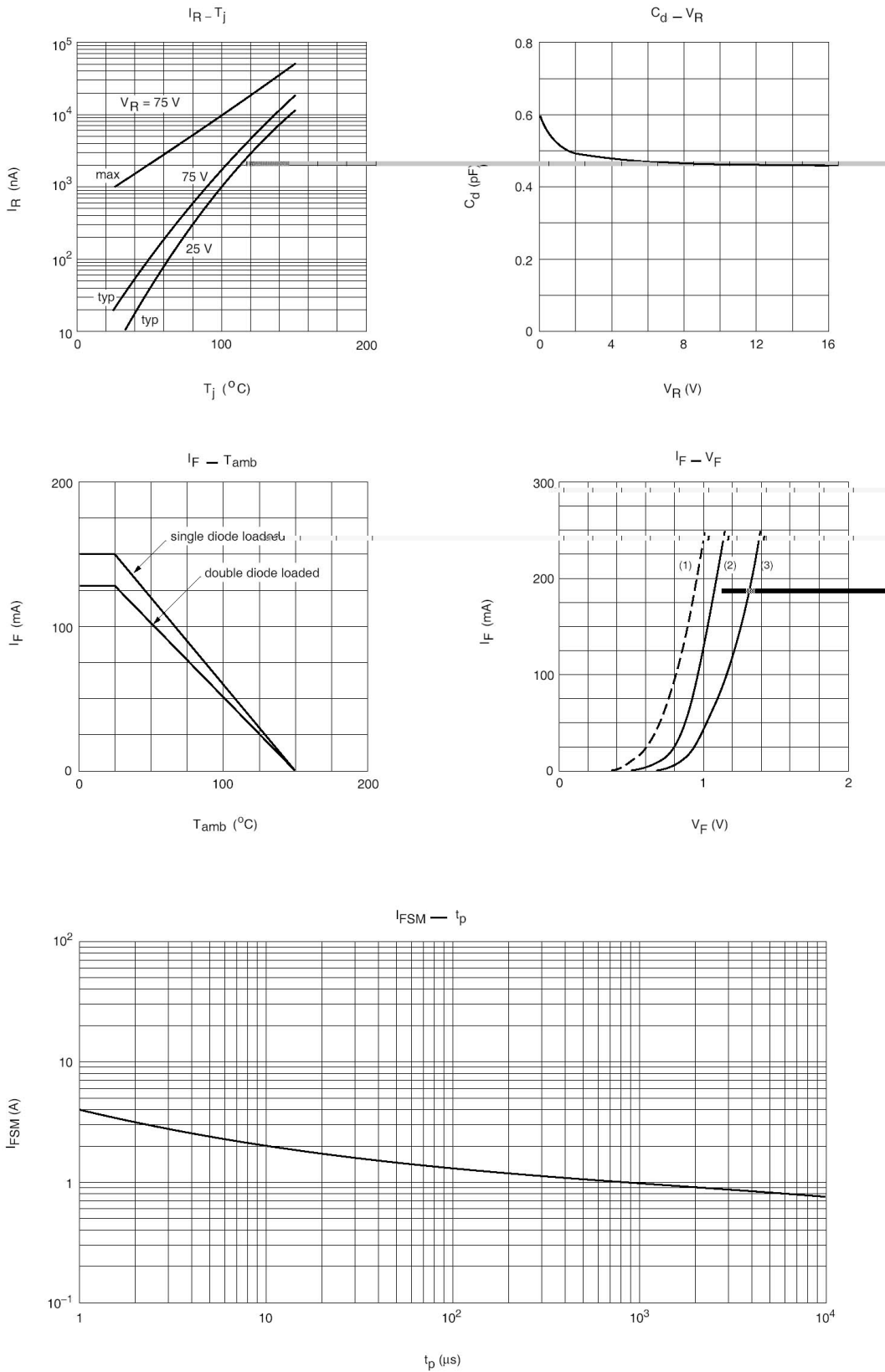


/ Marking

--	--



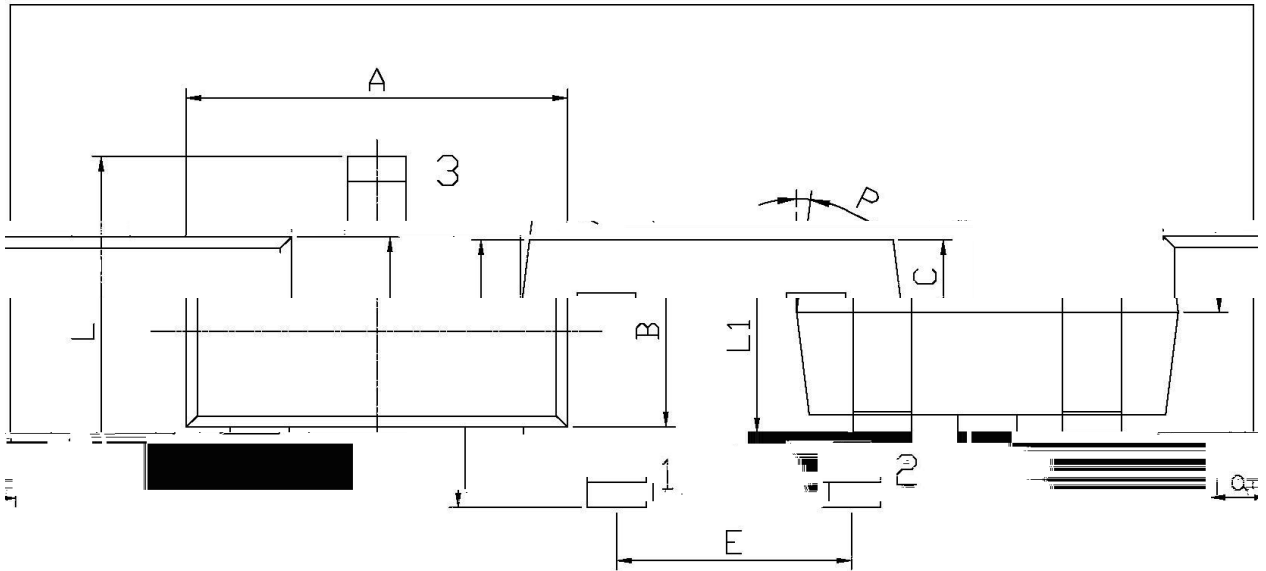
/ Electrical Characteristic Curve



/ Package Dimensions

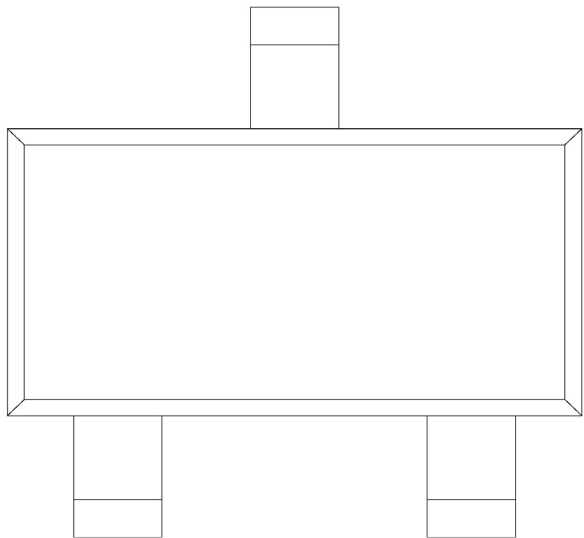
SOT-323

单位: mm

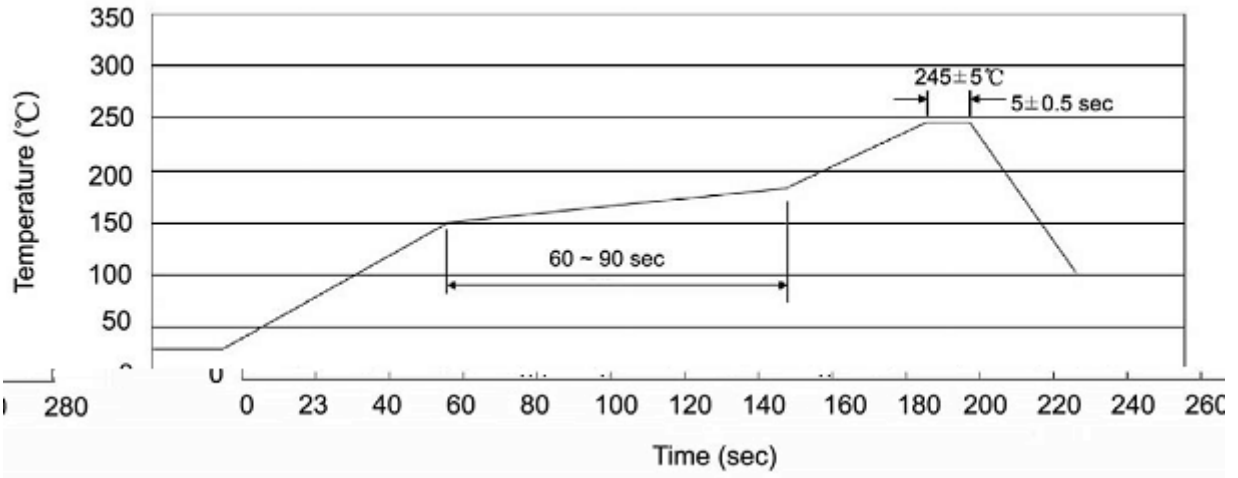


Symbol	Dimensions: in Millimeters		Symbol	Dimensions: in Millimeters	
	Min.	Max.		Min.	Max.
A	1.95	2.35	C	0.30	0.5
L	2.00	2.2	L1	0.85	1.1
E	1.20	1.40	a	0.20	0.4

/ Marking Instructions



( ) / K\ d g\ i Xk i \ Gif ] \ d ] fi @ ' I \ ] dn J f d \ i e ^ Z G Y \$ = i \ \ z



/ Resistance to Soldering Heat Test Conditions

/ Packaging SPEC.

封装形式	包装数量					包装尺寸 :		
	只卷盘	卷盘盒	只盒	盒箱	只箱	盒	箱	

/ Notices