

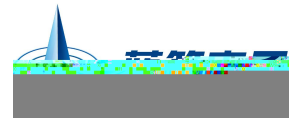
Silicon Diode in a SOT-23 Plastic Package .

Small signal diode, HF Product.

High Conductance Ultra Fast Diode.



PIN: See Equivalent Circuit

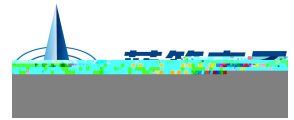


极限参数

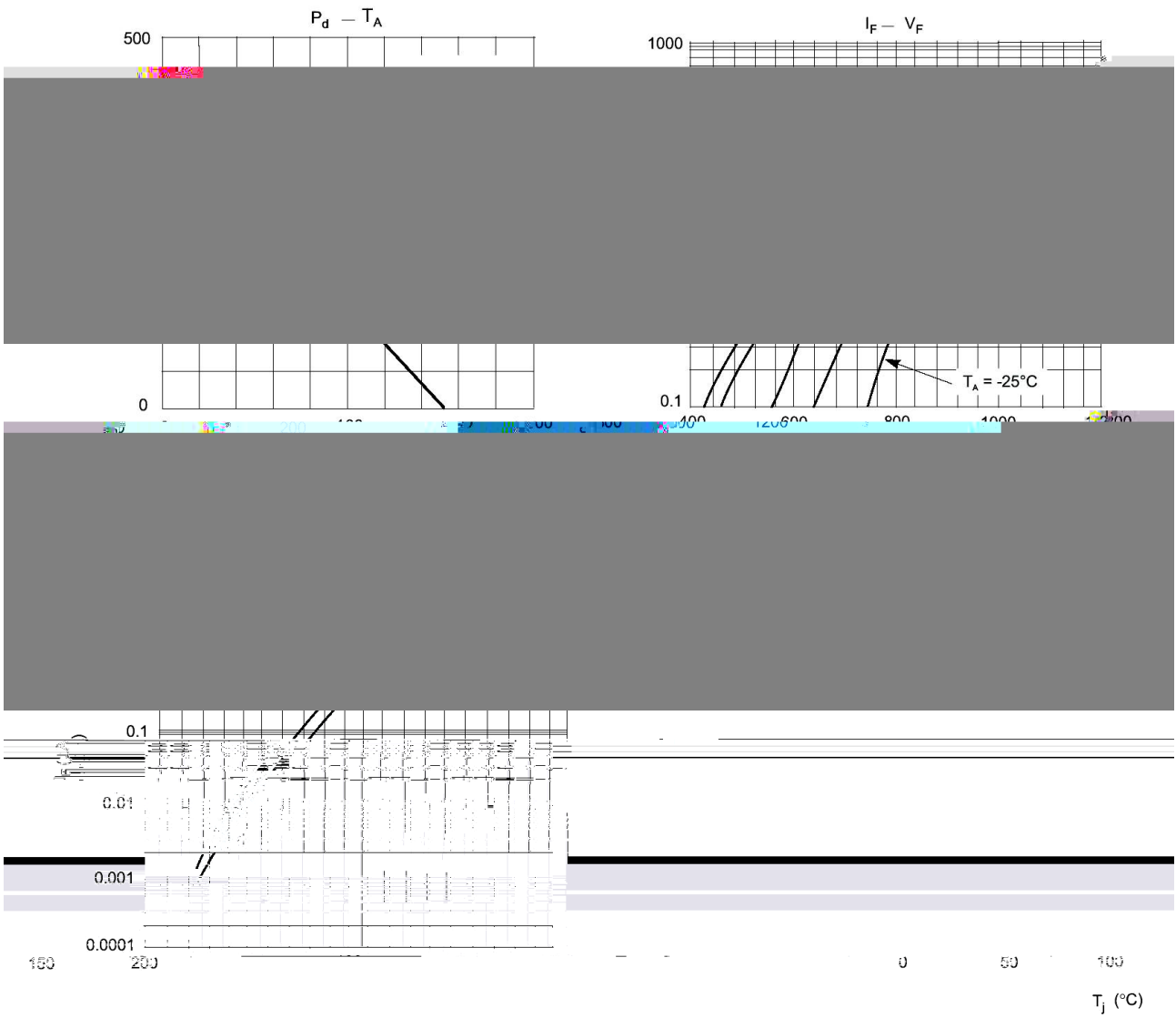
°C

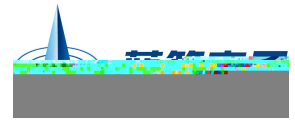
Parameter	Symbol	Rating	Unit
Maximum Repetitive Reverse Voltage		75	V
Breakdown Voltage	V_R	70	V
Average Rectified Forward Current	$I_{F(AV)}$	200	mA
Non-repetitive Peak Forward Surge Current	$I_{FSM(1)}$ (pulse width=1.0S)	1.0	A
	$I_{FSM(2)}$ (pulse width=1.0mS)	2.0	A
Power Dissipation	P_D	350	mW
Thermal Resistance, Junction to Ambient	$R_{\theta JA}$	357	°C/W
Junction Temperature	T_j	150	°C
Storage Temperature Range	T_{stg}	-55~150	°C

Parameter	Symbol	Test Conditions	Min	Typ	Max	Unit
Breakdown Voltage	V_R	$I_R=100\mu A$	70			V
Forward Voltage	V_F	$I_F=1.0mA$			715	mV
		$I_F=10mA$			855	mV
		$I_F=50mA$			1.0	V
		$I_F=150mA$			1.25	V
Instantaneous Reverse Current	I_R	$V_R=70V$			5.0	μA
		$V_R=25V$ $T_A=150^\circ C$			60	μA
		$V_R=70V$ $T_A=150^\circ C$			100	μA
Total Capacitance	C_T	$V_R=0$ $f=1.0MHz$			1.5	pF
Reverse Recovery Time	t_{rr}	$I_F=10mA$ $I_{RR}=1.0mA$ $R_L=100\Omega$			6.0	ns



电参数曲线图

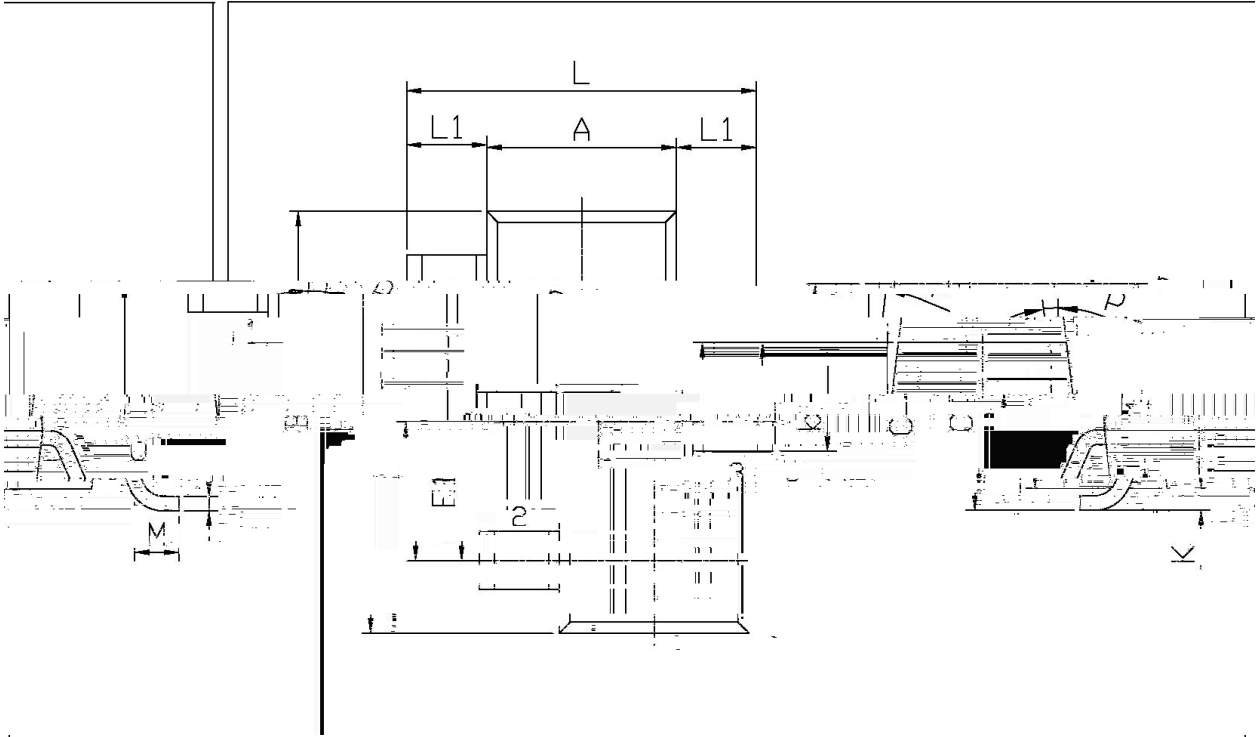




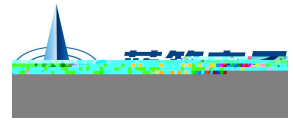
外形尺寸图

FSBREC-230L-230

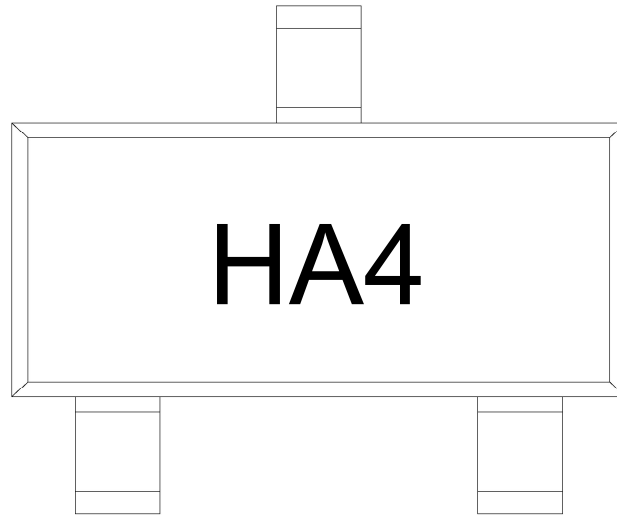
单位: mm



Symbol	Dimensions In Millimeters		Symbol	Dimensions In Millimeters	
	Min	Max		Min	Max
L	2.2	2.7	C	1.30Max	
	0.45	0.65	G1	0.90	0.20
A	1.15	1.50	G2	0.05	0.20
B	2.70	3.10	K	0.10	0.10
	0.70	0.70	P	0.20	0.20
	0.35	0.05			
	0.35	0.35			



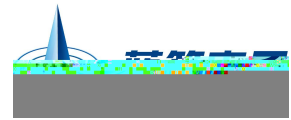
印章说明



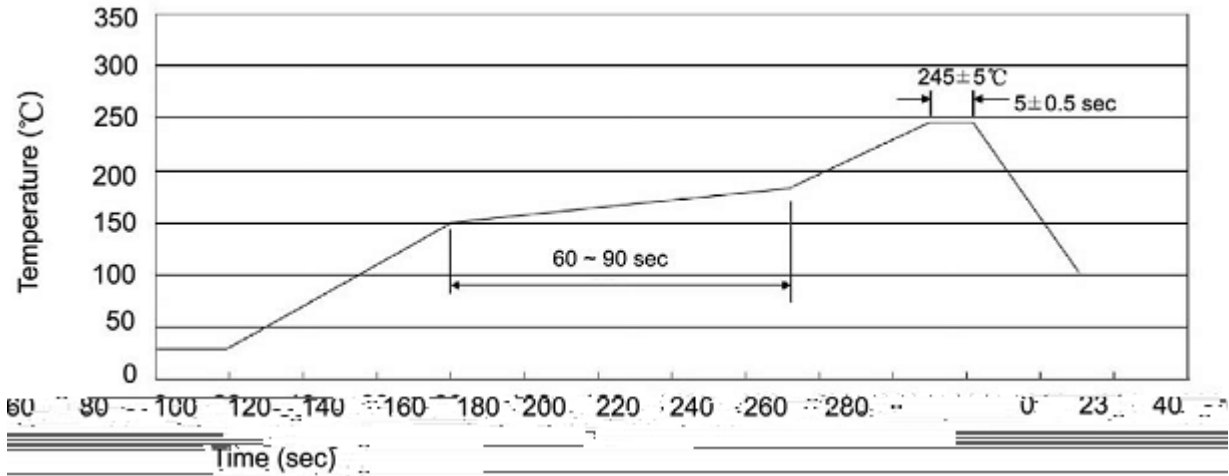
Note:

H: Company Code.

A4: Product Type Code.



回流焊温度曲线图 无铅 Temperature Profile for IR Reflow Soldering(Pb-Free)



Note:

- | | | | | | |
|---|-----|-----|----|-----------|---|
| 1 | 25 | 150 | 60 | 90sec; | 1.Preheating:25~150 , Time:60~90sec. |
| 2 | 245 | 5 | 5 | 0.5sec; | 2.Peak Temp.:245 5 , Duration:5 0.5sec. |
| 3 | | | 2 | 10. /sec. | 3. Cooling Speed: 2~10. /sec. |

耐焊接热试验条件

260 5. 10 1 sec. Temp.:260 5. Time:10 1 sec

包装规格

/ REEL

Package Type 封装形式	Units 包装数量					Dimension 包装尺寸 (unit: mm ³)		
	Units/Reel 只/卷盘	Reels/Inner Box 卷盘/盒	Units/Inner Box 只/盒	Inner Boxes/Outer Box 盒/箱	Units/Outer Box 只/箱	Reel	Inner Box 盒	Outer Box 箱
SOT-23	3,000	10	30,000	6	180,000	7" ×8	180×120×180	390×385×205

使用说明