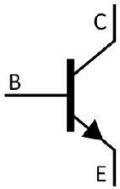


/ Descriptions

/ Features

/ Applications

/ Equivalent Circuit



/ Pinning



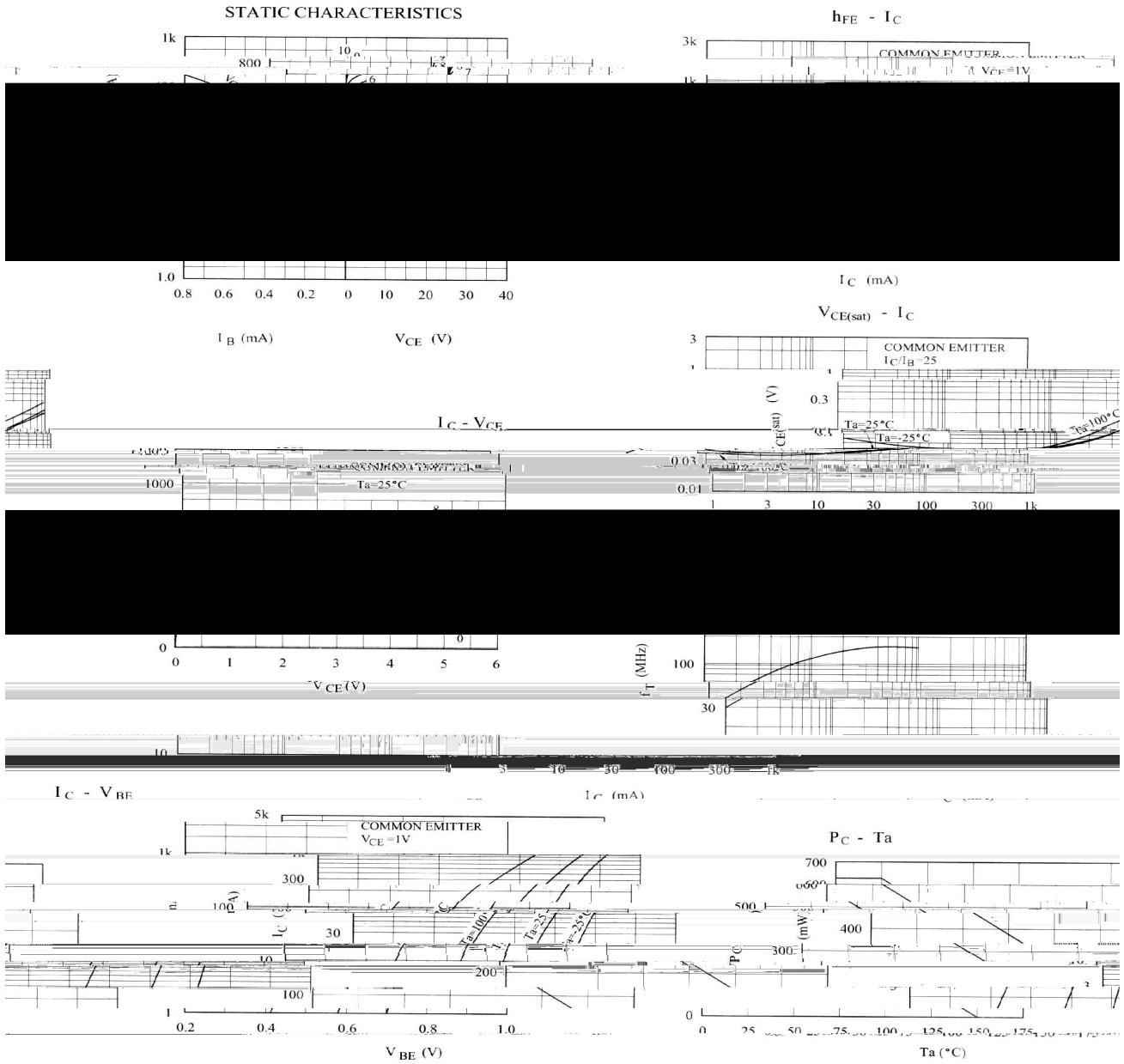
/ h_{FE} Classifications & Marking

/ Absolute Maximum Ratings(Ta=25)

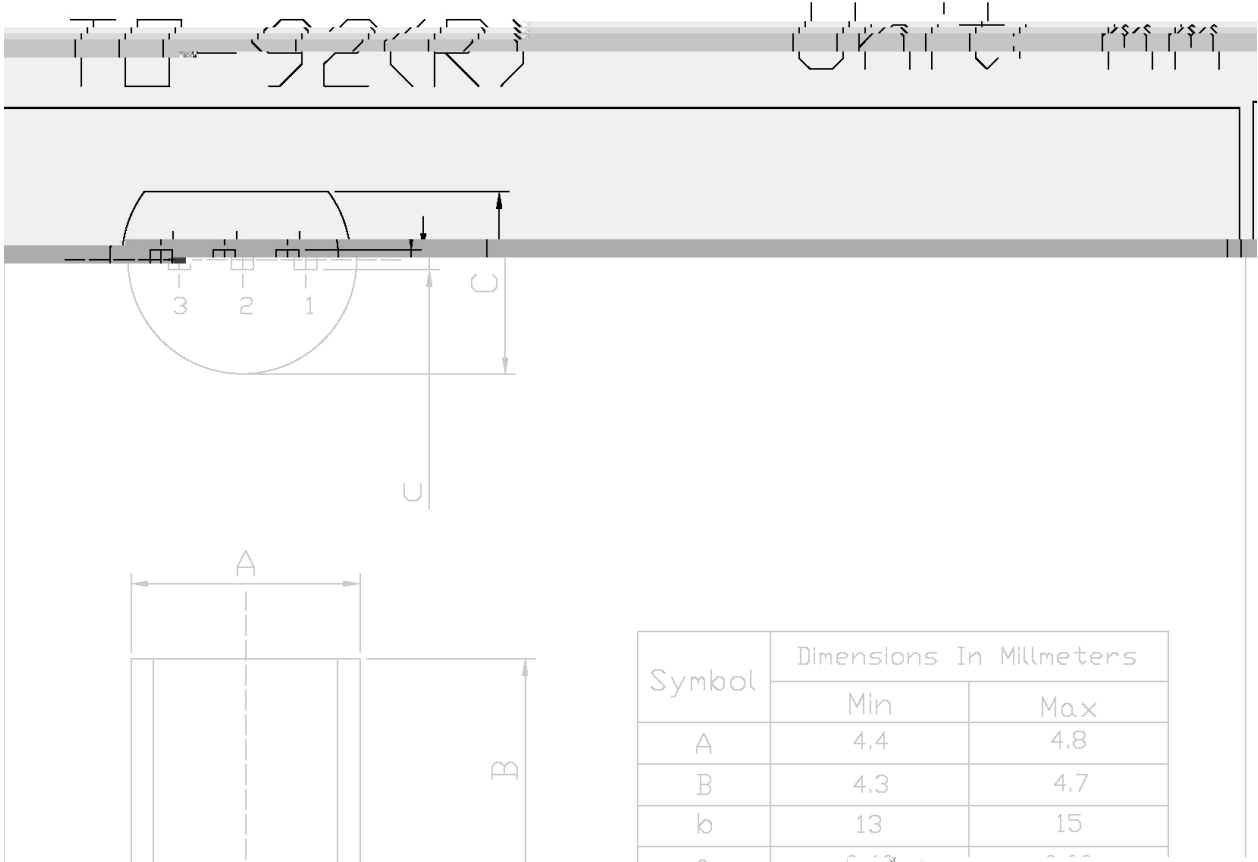
			°C
			°C

/ Electrical Characteristics(Ta=25)

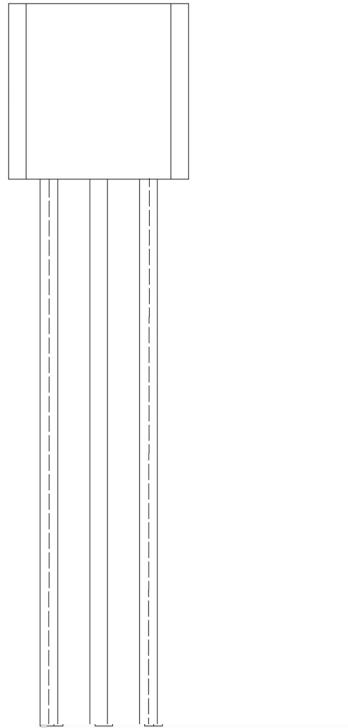
/ Electrical Characteristic Curve



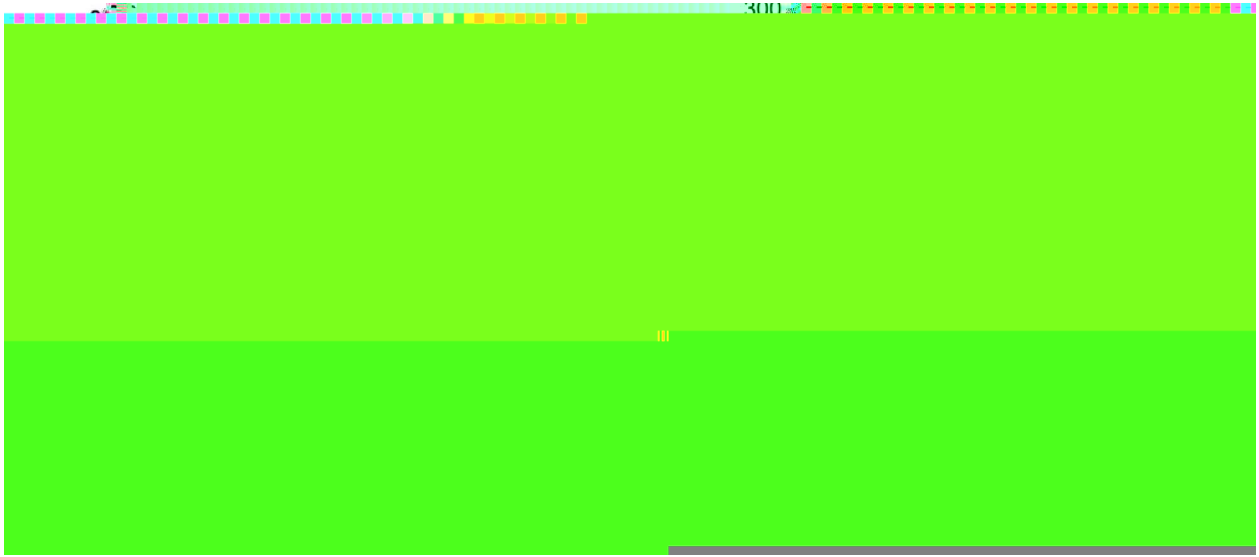
/ Package Dimensions



/ Marking Instructions



() / Temperature Profile for Dip Soldering(Pb-Free)



/ Resistance to Soldering Heat Test Conditions

°C

/ Packaging SPEC.

/ Notices