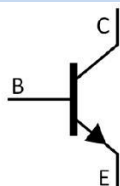


/ Descriptions

/ Features

/ Applications

/ Equivalent Circuit



/ Pinning



/  $h_{FE}$  Classifications & Marking

--	--	--	--

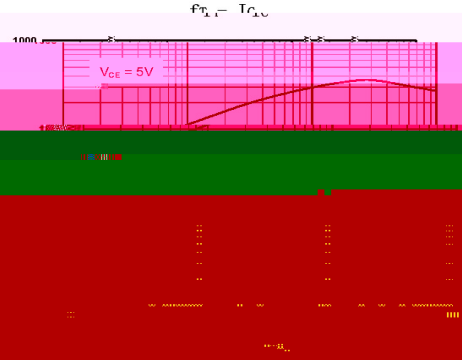
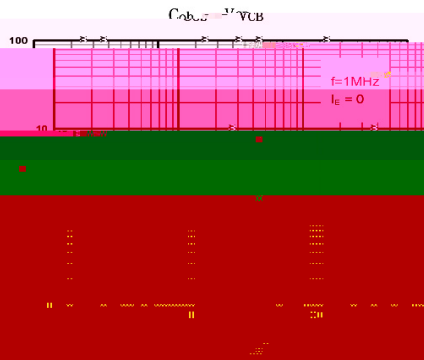
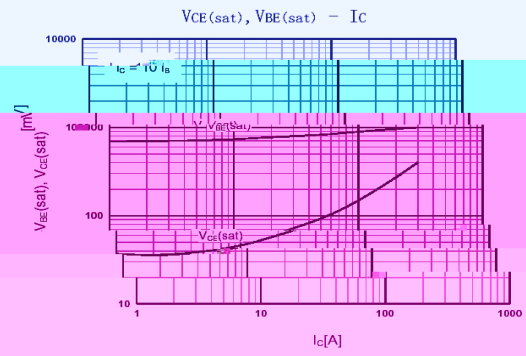
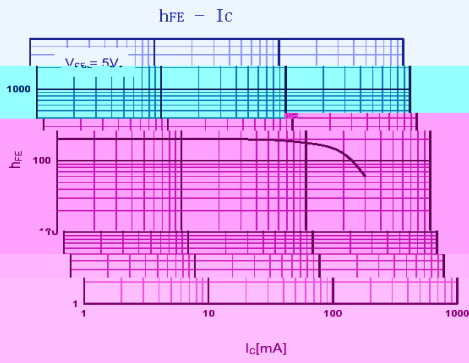
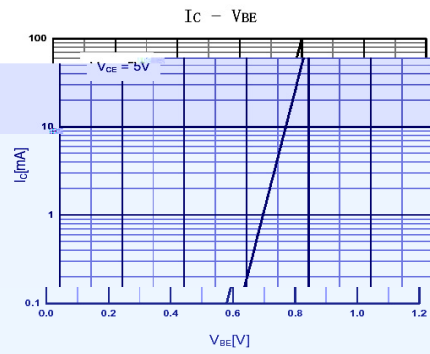
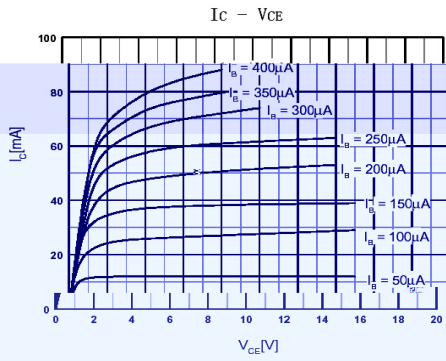
**/ Absolute Maximum Ratings(Ta=25 )**

			°C
			°C

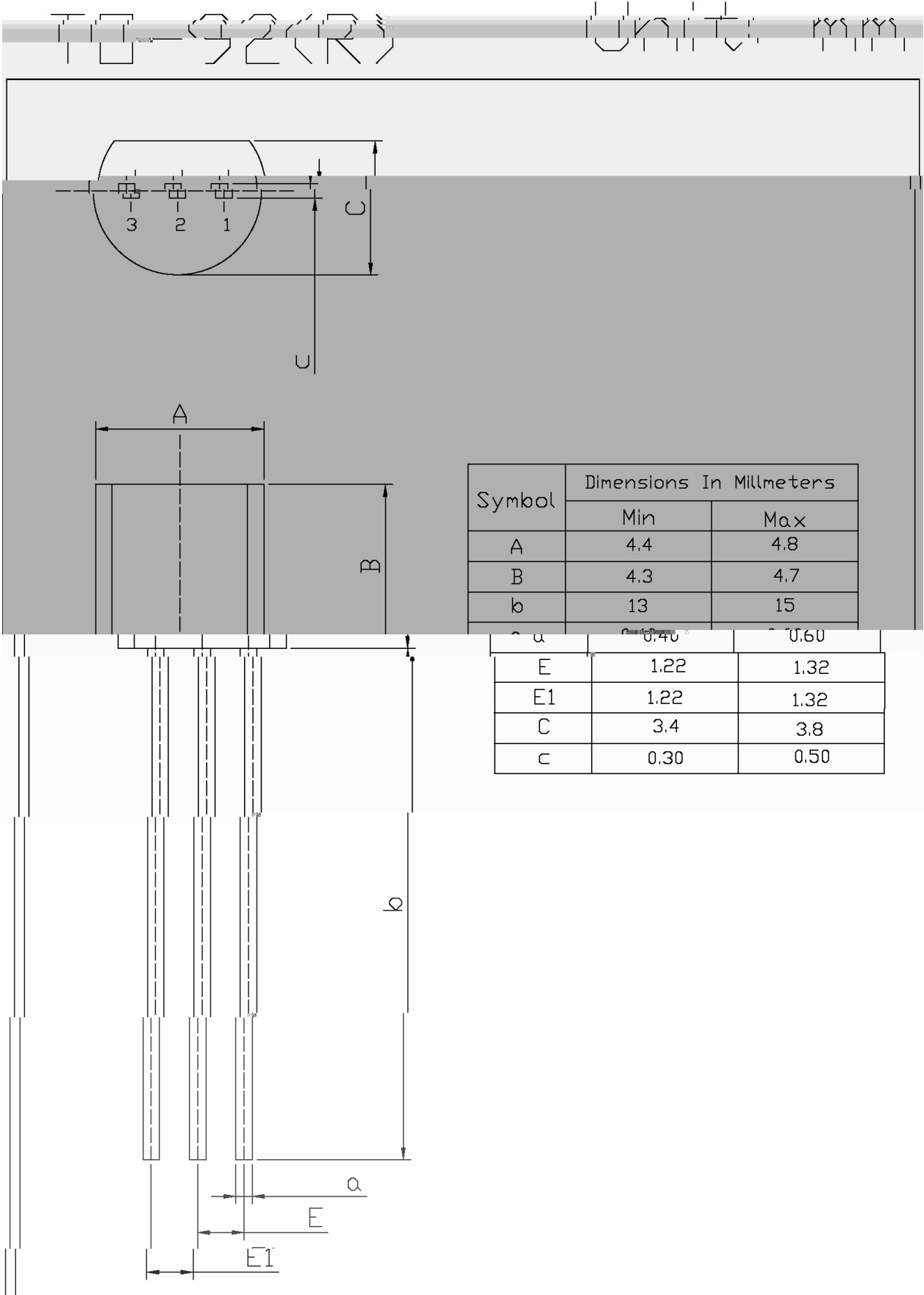
**/ Electrical Characteristics(Ta=25 )**

						μ

/ Electrical Characteristic Curve



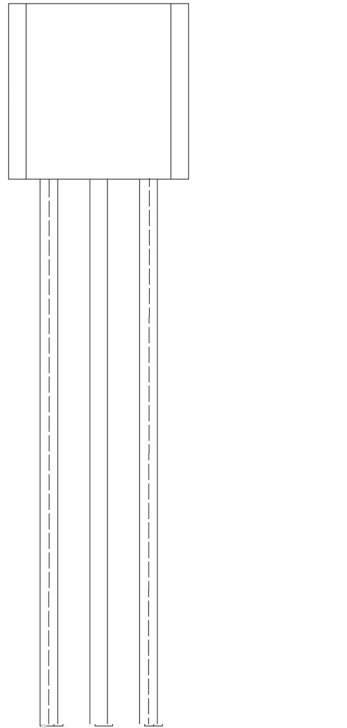
**/ Package Dimensions**



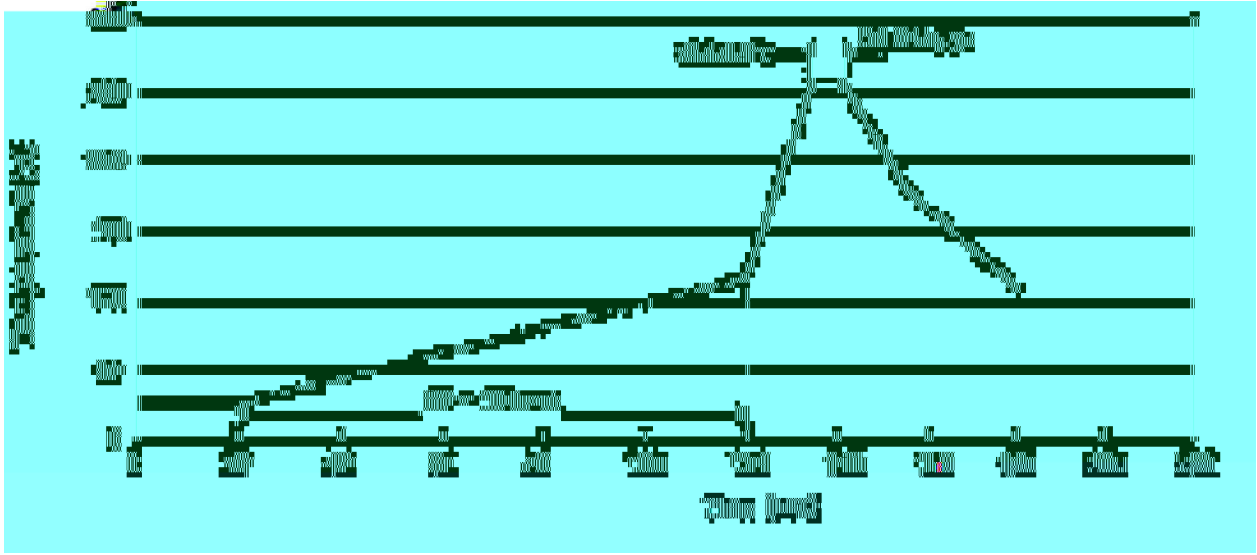
Symbol	Dimensions In Millimeters	
	Min	Max
A	4.4	4.8
B	4.3	4.7
b	13	15

a	0.40	0.60
E	1.22	1.32
E1	1.22	1.32
C	3.4	3.8
c	0.30	0.50

/ Marking Instructions



( ) / Temperature Profile for Dip Soldering(Pb-Free)



/ Resistance to Soldering Heat Test Conditions

°C

/ Packaging SPEC.



/ Notices