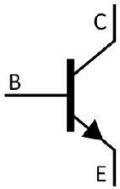


/ Descriptions

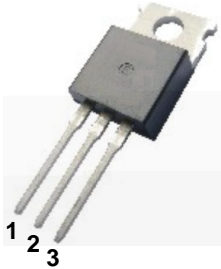
/ Features

/ Applications

/ Equivalent Circuit



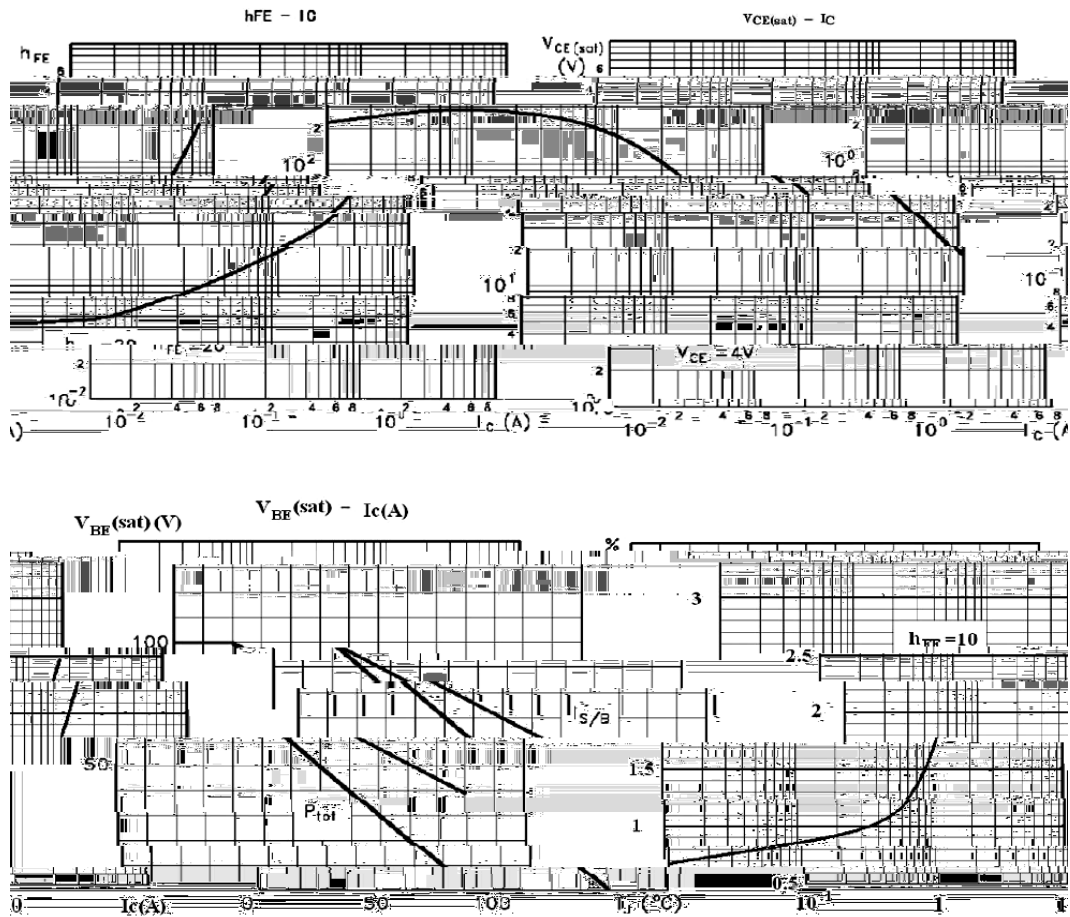
/ Pinning



/  $h_{FE}$  Classifications & Marking

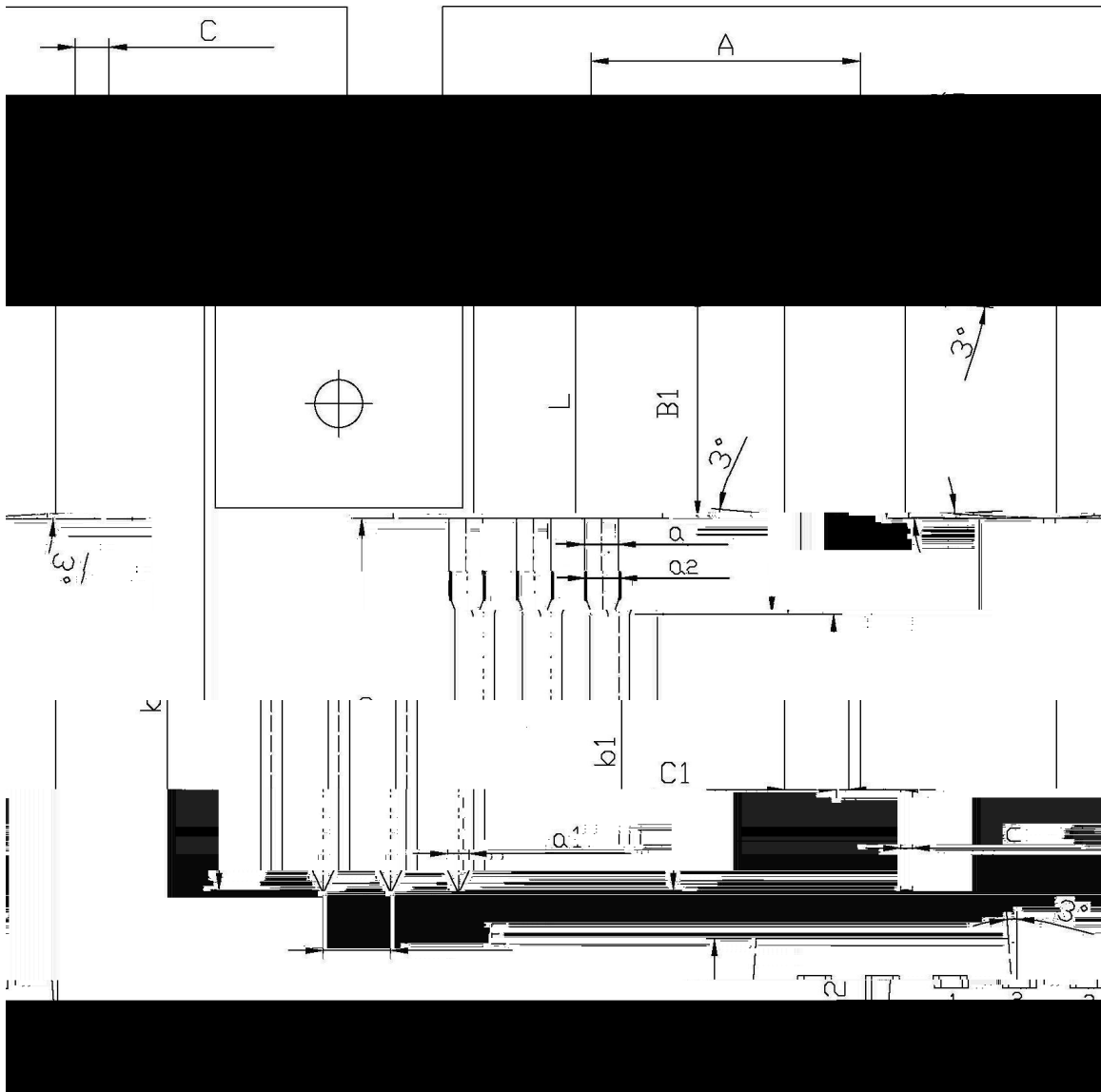


/ Electrical Characteristic Curve



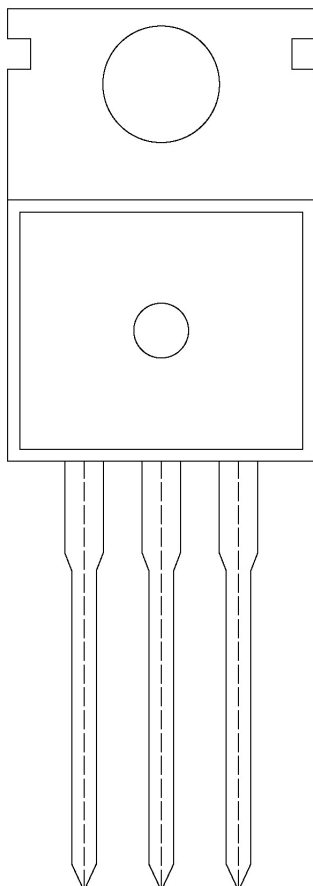
/ Package Dimensions

单位: mm TO-220

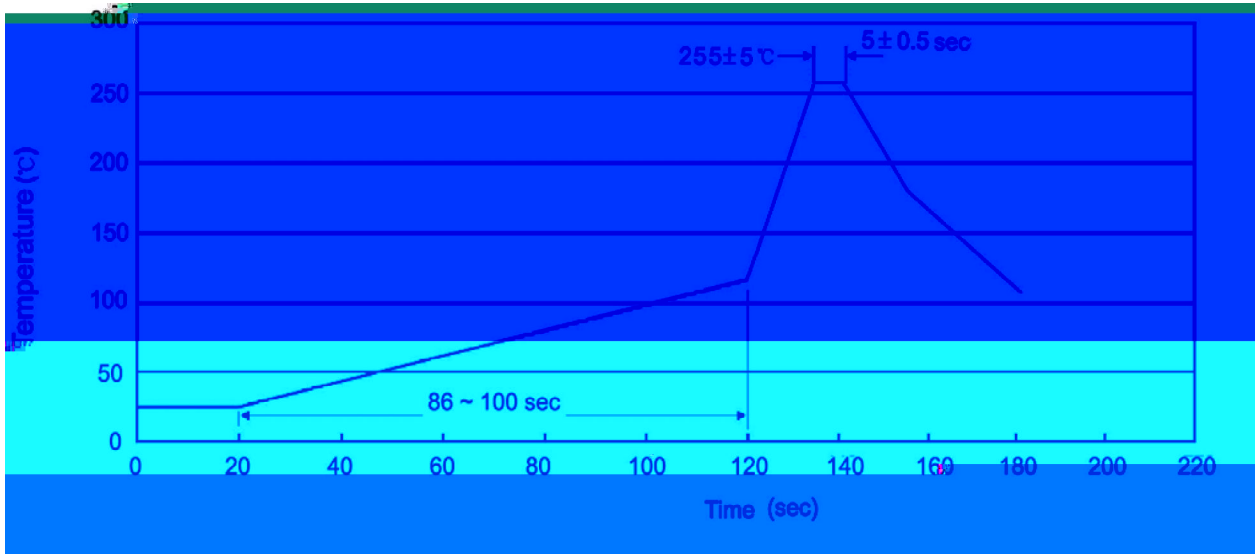


Symbol	Dimensions in Millimeters		Symbol	Dimensions in Millimeters	
	Min	Max		Min	Max
A	9.8	10.2	C	1.2	1.4
R	3.56	3.64	B	6.3	6.7
B1	9.0	9.4			15.7
C1	0.6	0.7			h1
a	1.22	1.32			a
a2	2.34	2.74			E
b1	1.25	1.45			Q2

/ Marking Instructions



( ) / Temperature Profile for Dip Soldering(Pb-Free)



/ Resistance to Soldering Heat Test Conditions

/ Packaging SPEC.



/ Notices