





Rev.E Jan.-2022

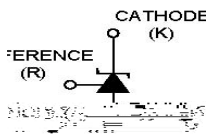
TO-92

Precision adjustable shunt regulator in a TO-92 Plastic Package.

2.500V; $V_O=V_{ref}$ 37V;	0.4%,0.8%; ( :400 $\mu$ A);	1.0mA 100mA; ( :0.15 $\Omega$ )	;
-------------------------------	--------------------------------	------------------------------------	---

Precise reference voltage to 2.500V;guaranteed 0.4%,0.8% reference voltage Tolerance; sink current capability,1.0mA~100mA;quick turn-on; adjustable Output voltage,  $V_O=V_{ref}$ ~37V;low operational cathode current,400 $\mu$ A typical; 0.15 $\Omega$  typical output impedance.

Linear regulators, adjustable power supply, switching power supply.



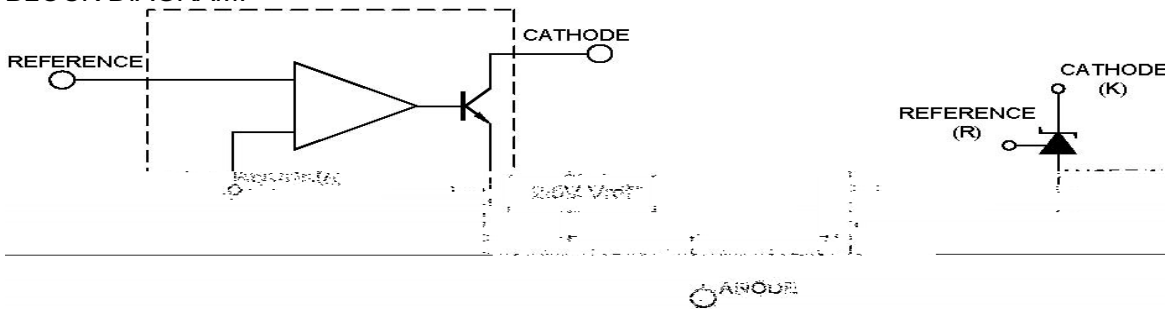
PIN 1 K      PIN 2 A      PIN 3 R

See Marking Instructions

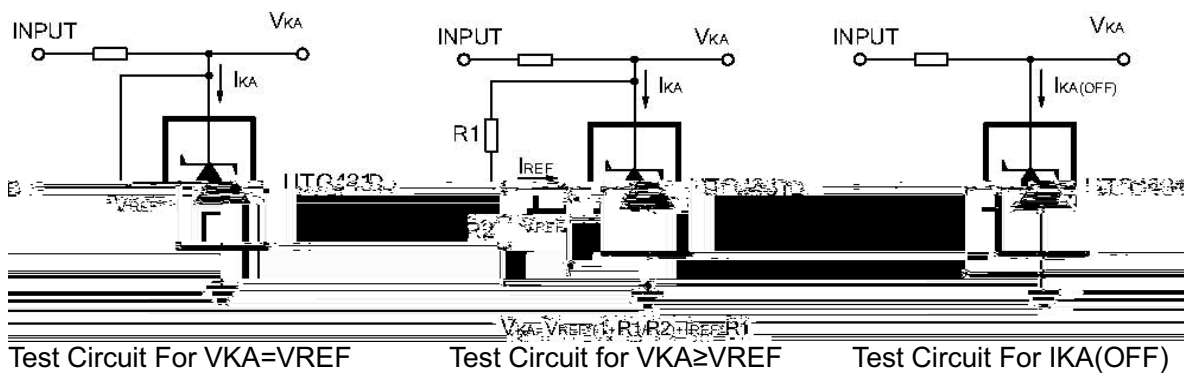
Rev.E Jan.-2022



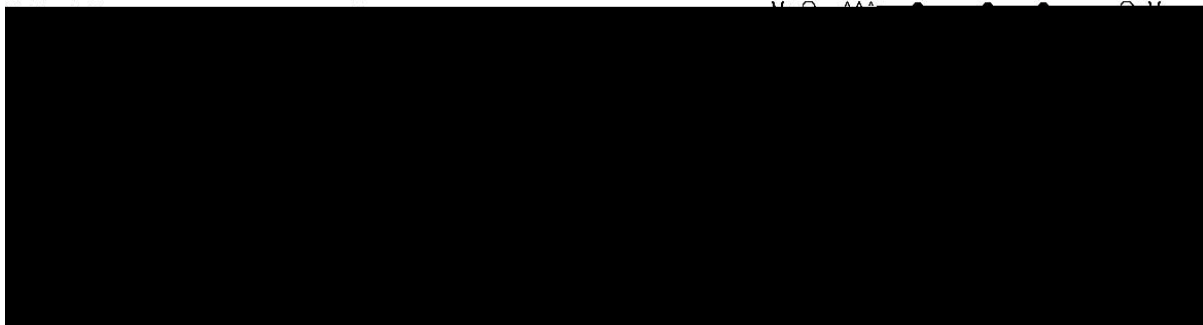
**BLOCK DIAGRAM:**



**TEST CIRCUITS:**

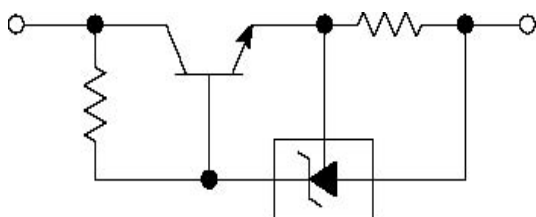


**TYPICAL APPLICATION:**

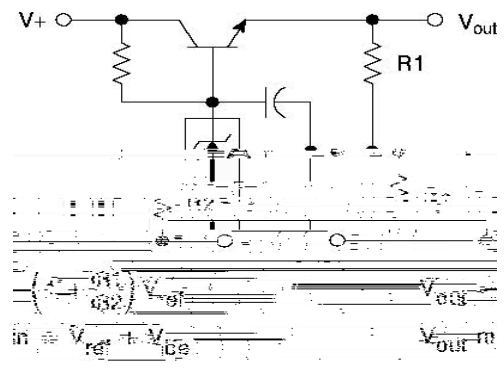


Shutdown Regulator

Higher-current Shunt



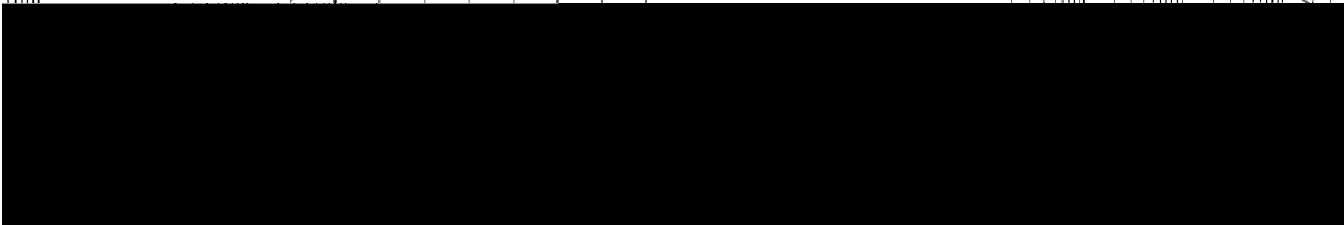
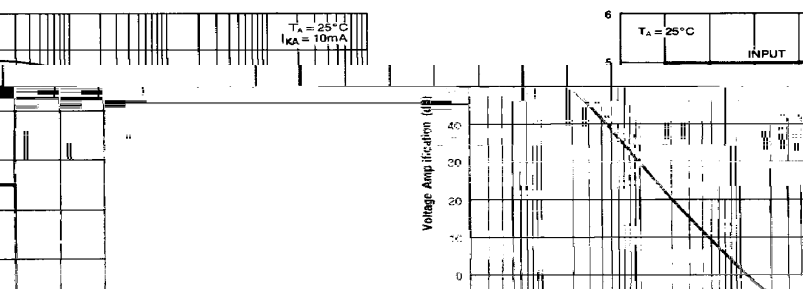
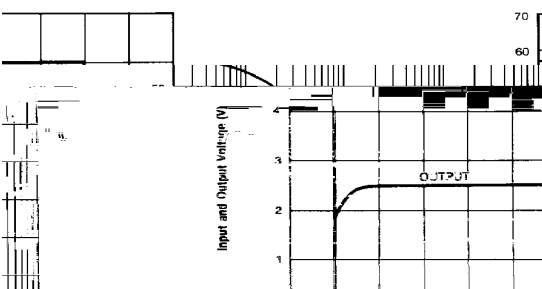
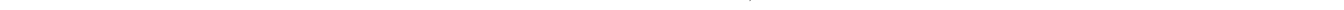
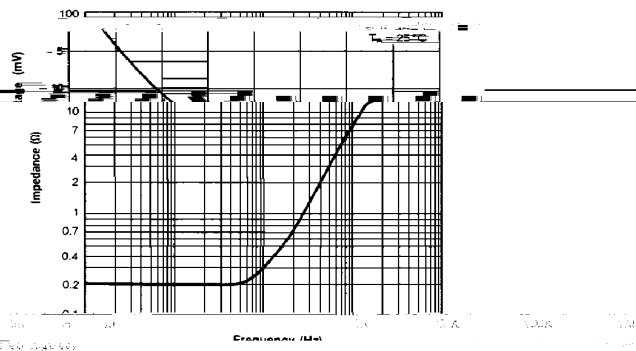
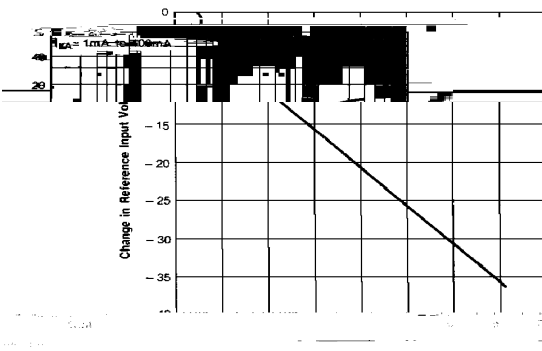
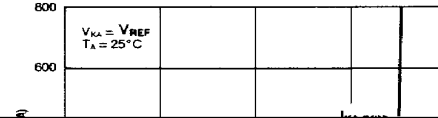
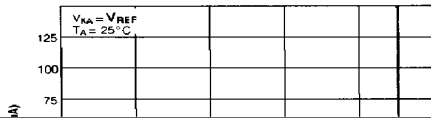
Constant Current Source



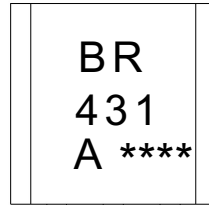
Series Pass Re53



Rev.E Jan.-2022







说明：

BR： 为公司代码

431： 为型号代码

A： 为  $V_{REF}$  分档代码

\*\*\*\*： 为生产批号代码，随生产批号变化

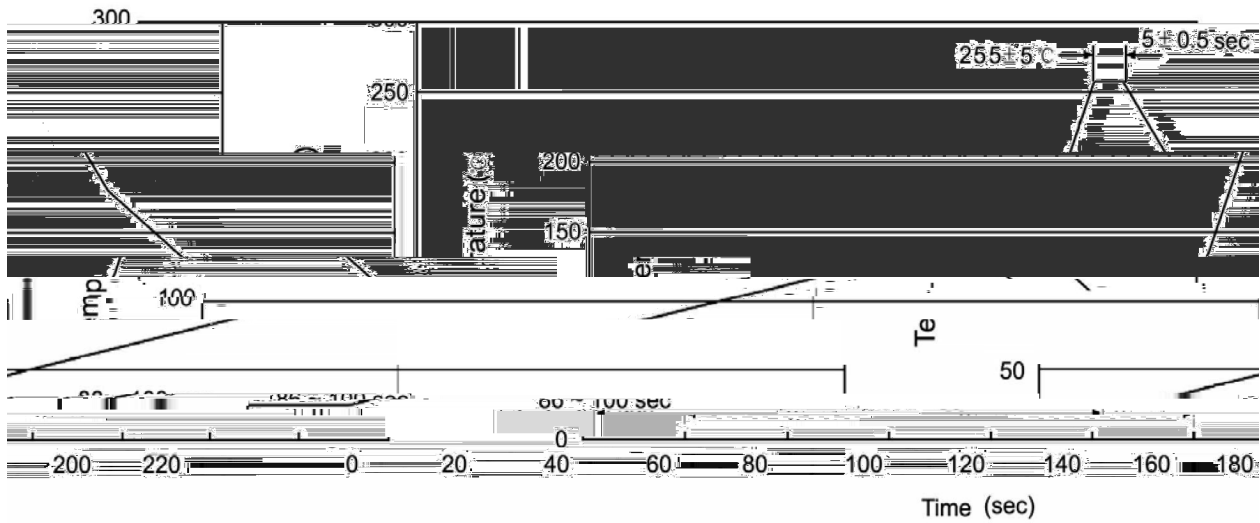
Note:

BR: Company Code.

431: Product Type Code.

A:  $V_{REF}$  Classifications Symbol

\*\*\*\*: Lot No. Code, code change with Lot No



Note:

- |   |       |     |           |        |  |
|---|-------|-----|-----------|--------|--|
| 1 | 25    | 150 | 60        | 90sec; | 1.Preheating:25~150°C, Time:60~90sec.    |
| 2 | 255±5 |     | 5±0.5sec; |        | 2.Peak Temp.:255±5°C, Duration:5±0.5sec. |
| 3 |       | 2   | 10°C/sec. |        | 3. Cooling Speed: 2~10°C/sec.            |

温度: 270±5°C      时间: 10±1 sec.      Temp:270±5°C      Time:10±1 sec

/ BULK

Package Type 封装形式	Units 包装数量					Dimension 包装尺寸 (unit: mm3)		
	Units/Bag 只/袋	Bags/Inner Box 袋/盒	Units/Inner Box 只/盒	Inner Boxes/Outer Box 盒/箱	Units/Outer Box 只/箱	Bag 袋	Inner Box 盒	Outer Box 箱
TO-92	1,000	10	10,000	5	50,000	135×190	237×172×102	560×245×195
	1,000	10	10,000	10	100,000	135×190	237×172×102	560×245×375

/ AMMO

Package Type 封装形式	Units 包装数量					Dimension 包装尺寸 (unit: mm3)	
	Units/tape 只/纸带	Tape/Inner Box 纸带/盒	Rows/Inner Box 纸带层/盒	Inner Boxes/Outer Box 盒/箱	Units/Outer Box 只/箱	Inner Box 盒	Outer Box 箱
TO-92	3,000	1	120				