

/ Descriptions

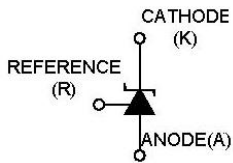
SOT-23

/ Features

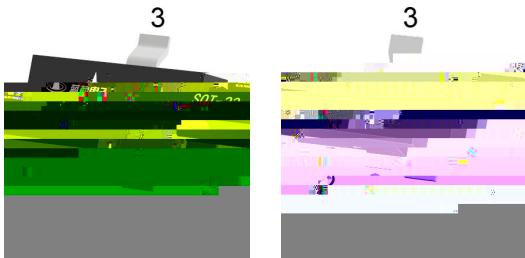
2.500V; 0.4%,0.8%; 1.0mA 100mA; ;
 $V_O=V_{ref}$ 37V; (:400 μ A); (:0.15 Ω)
 AEC-Q100

/ Applications

/ Equivalent Circuit



/ Pinning



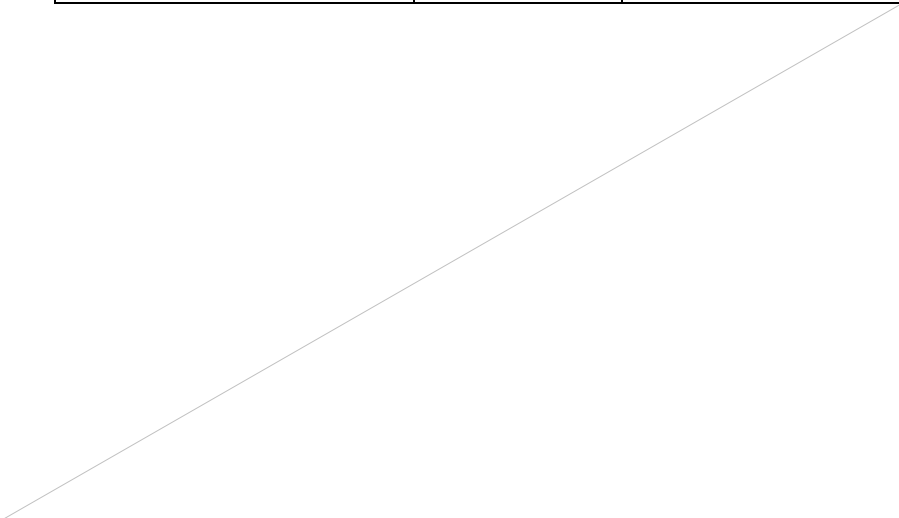
/ Marking

--	--

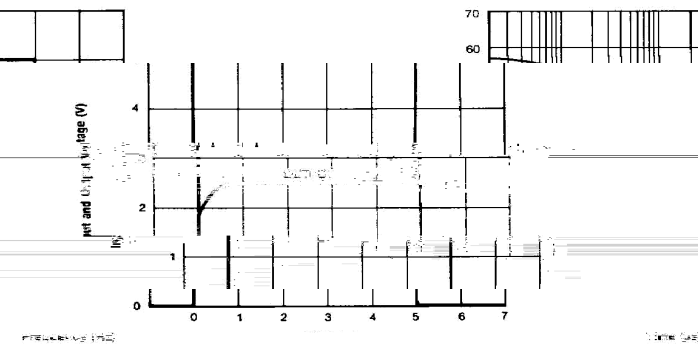
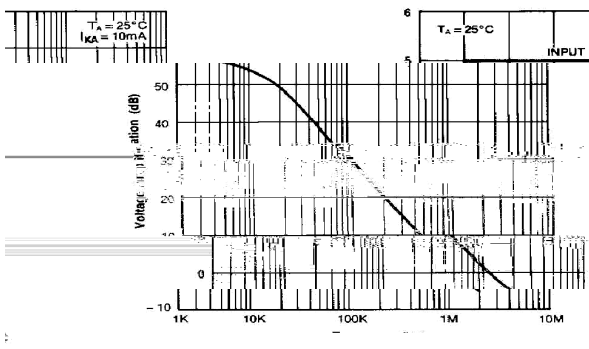
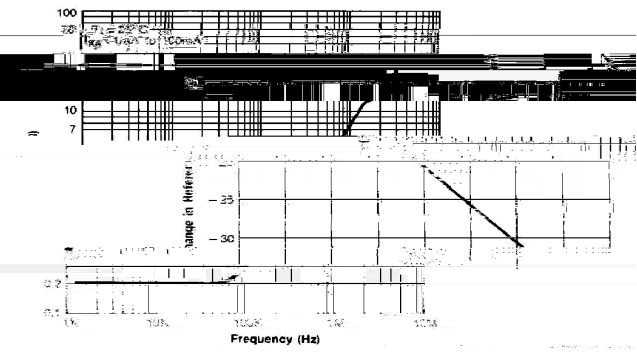
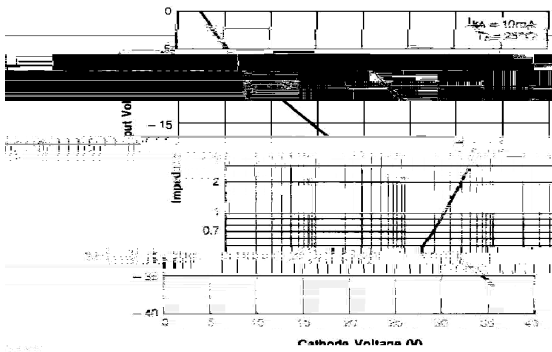
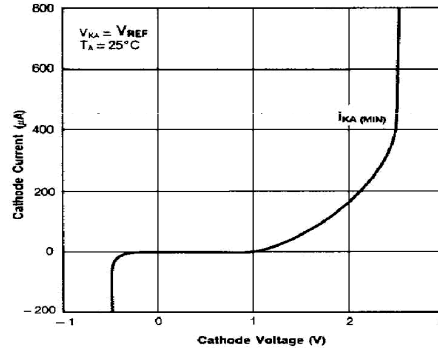
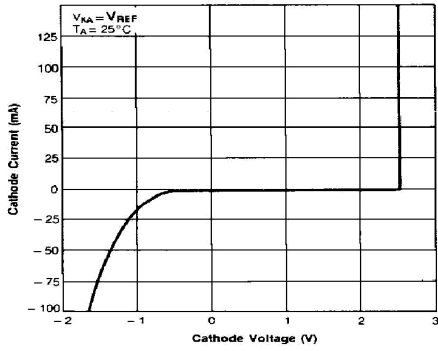


		~	
		~	
		~	°C
			°C
		~	°C

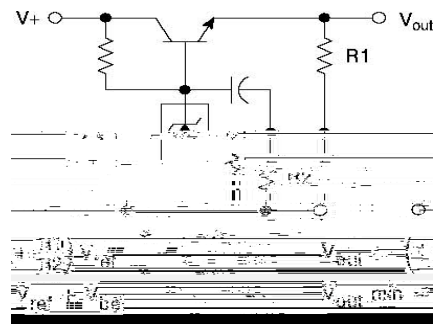
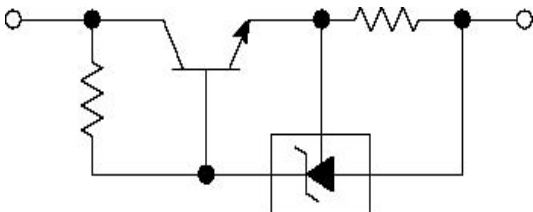
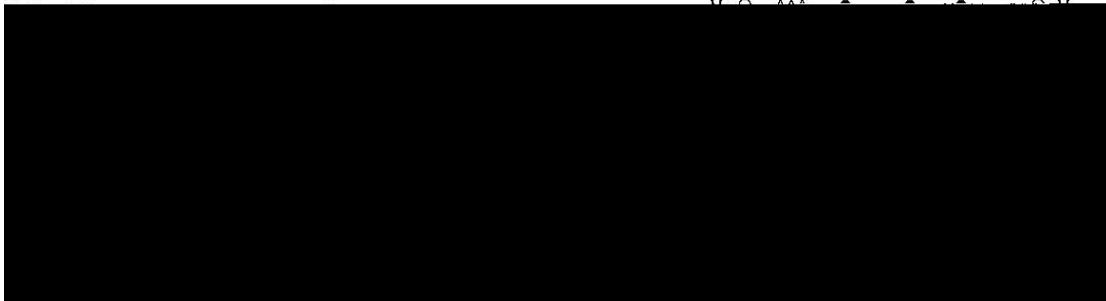
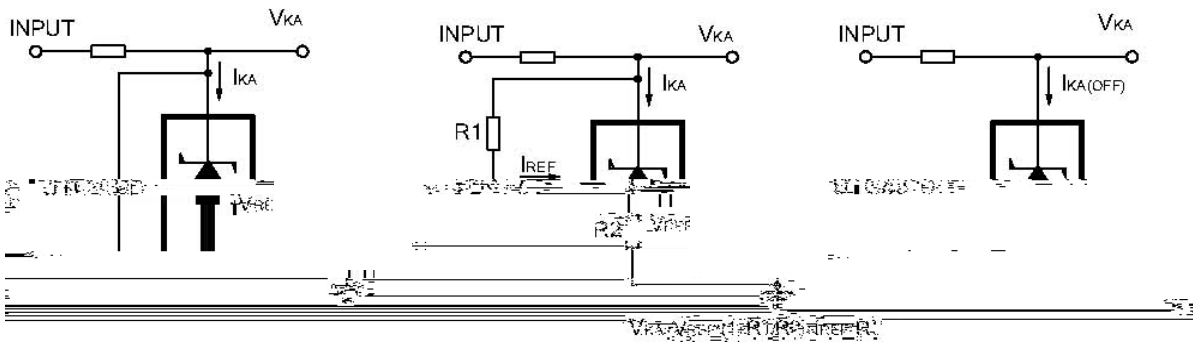
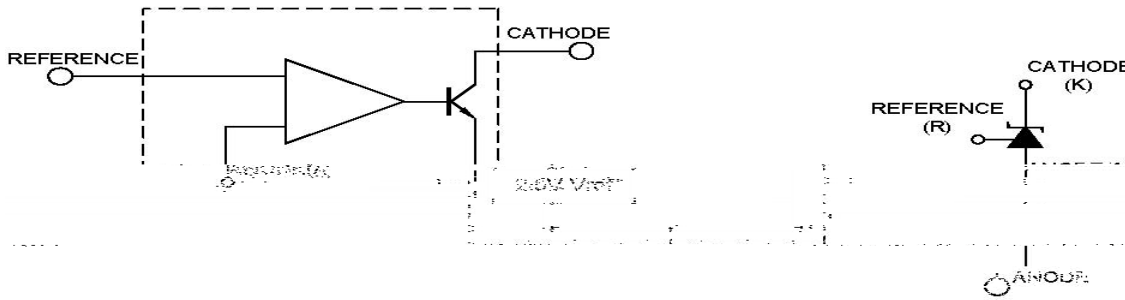
--	--	--	--	--	--	--



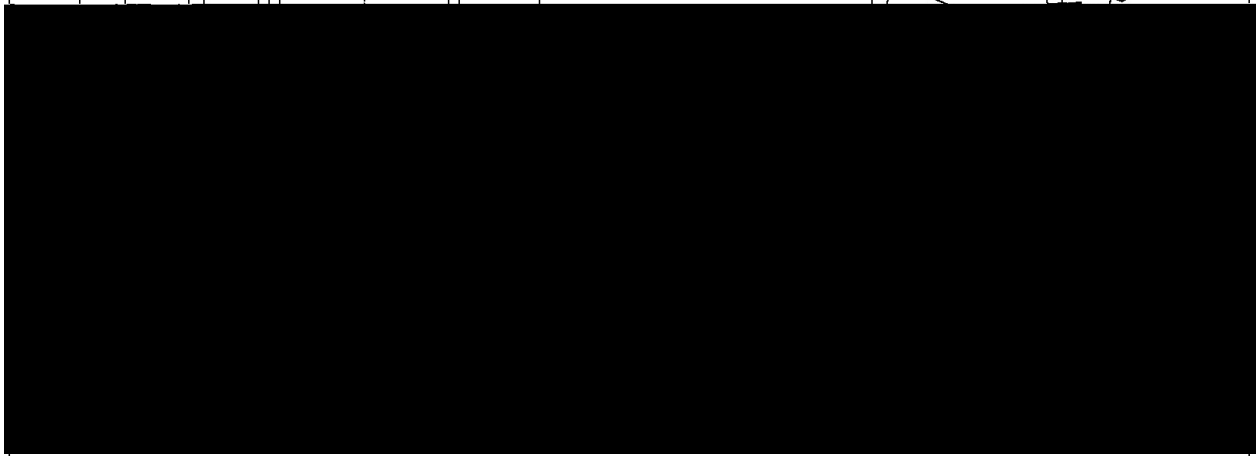
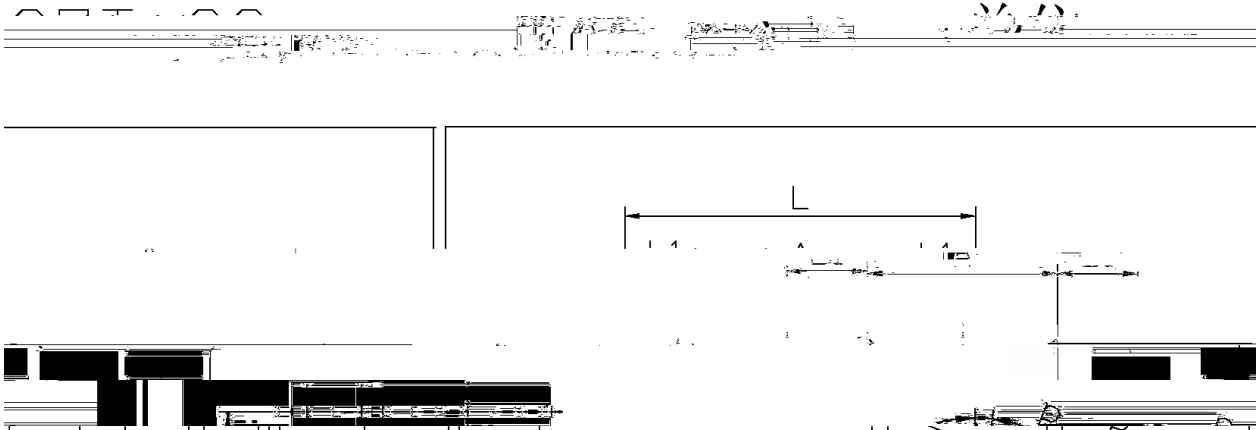
/ Electrical Characteristic Curve



& Test circuits&Typical Application

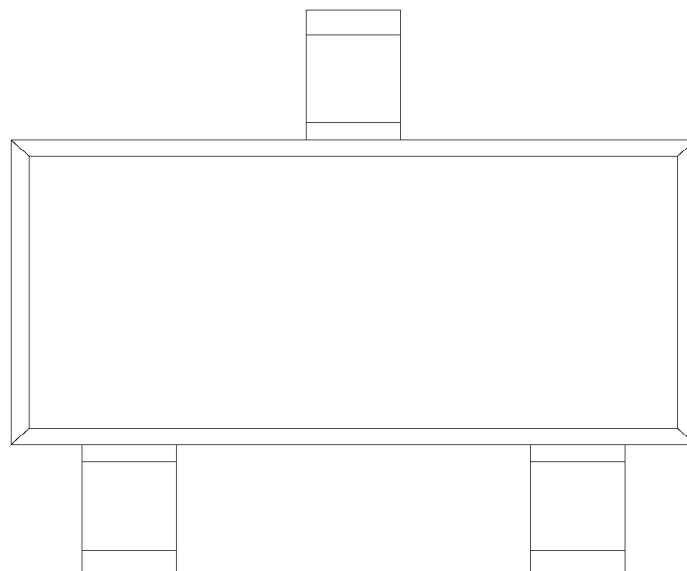


/ Package Dimensions



Symbol	Dimensions In Millimeters		Symbol	Dimensions In Millimeters	
	Min	Max		Min	Max
L	22	27	C	0.30Max	
L1	0.45	0.65	C1	0.93	1.20
A	1.15	1.50	G	0.05	0.20
B	2.70	3.10	K	0	0.10
E	1.70	2.10	M	0.20MIN	
P	0.85	1.75	P	0.55	
	0.35				

/ Marking Instructions



Q
431

