

/ Descriptions

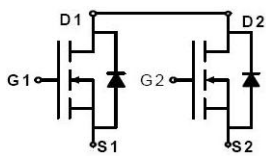
N MOS

/ Features

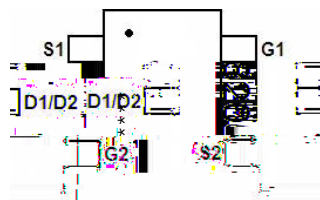
$R_{DS(on)}$ 2.5V

/ Applications

/ Equivalent Circuit



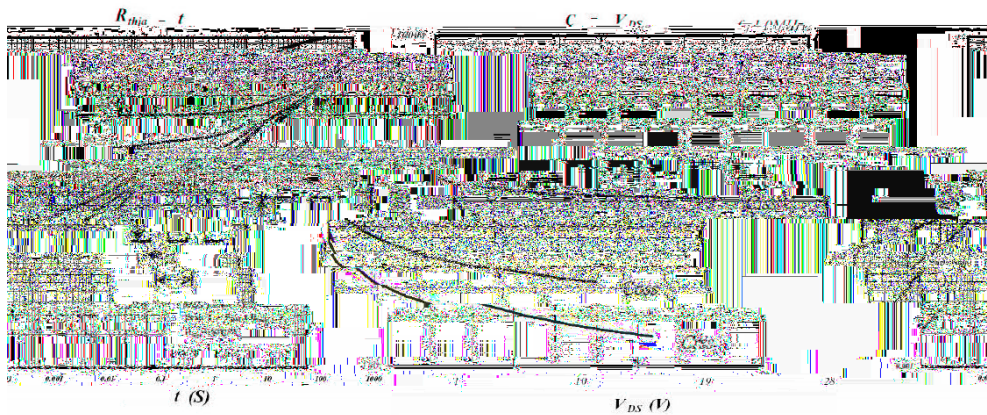
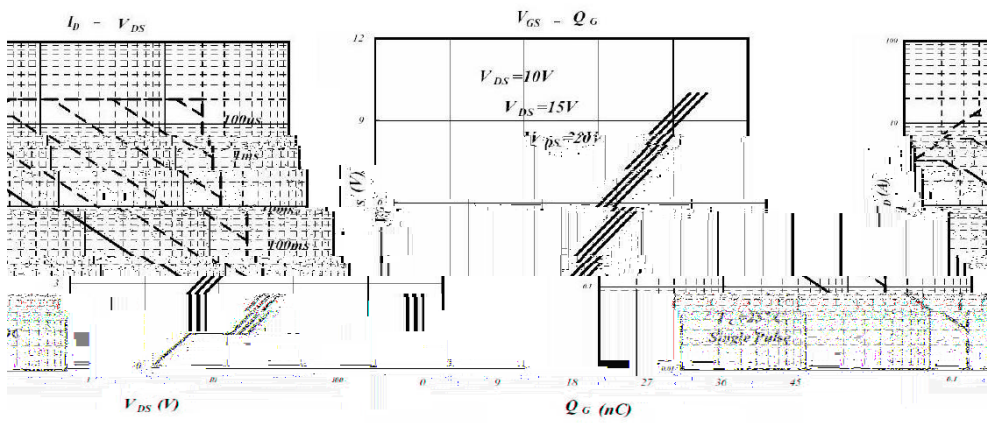
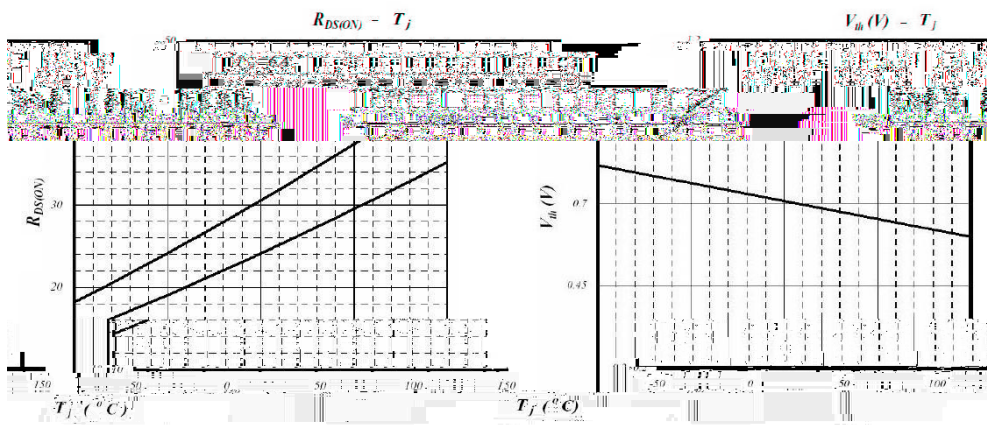
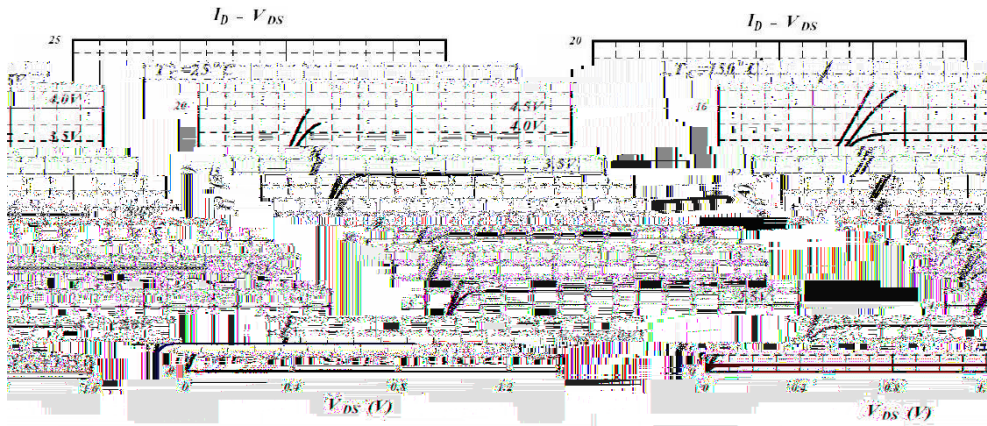
/ Pinning



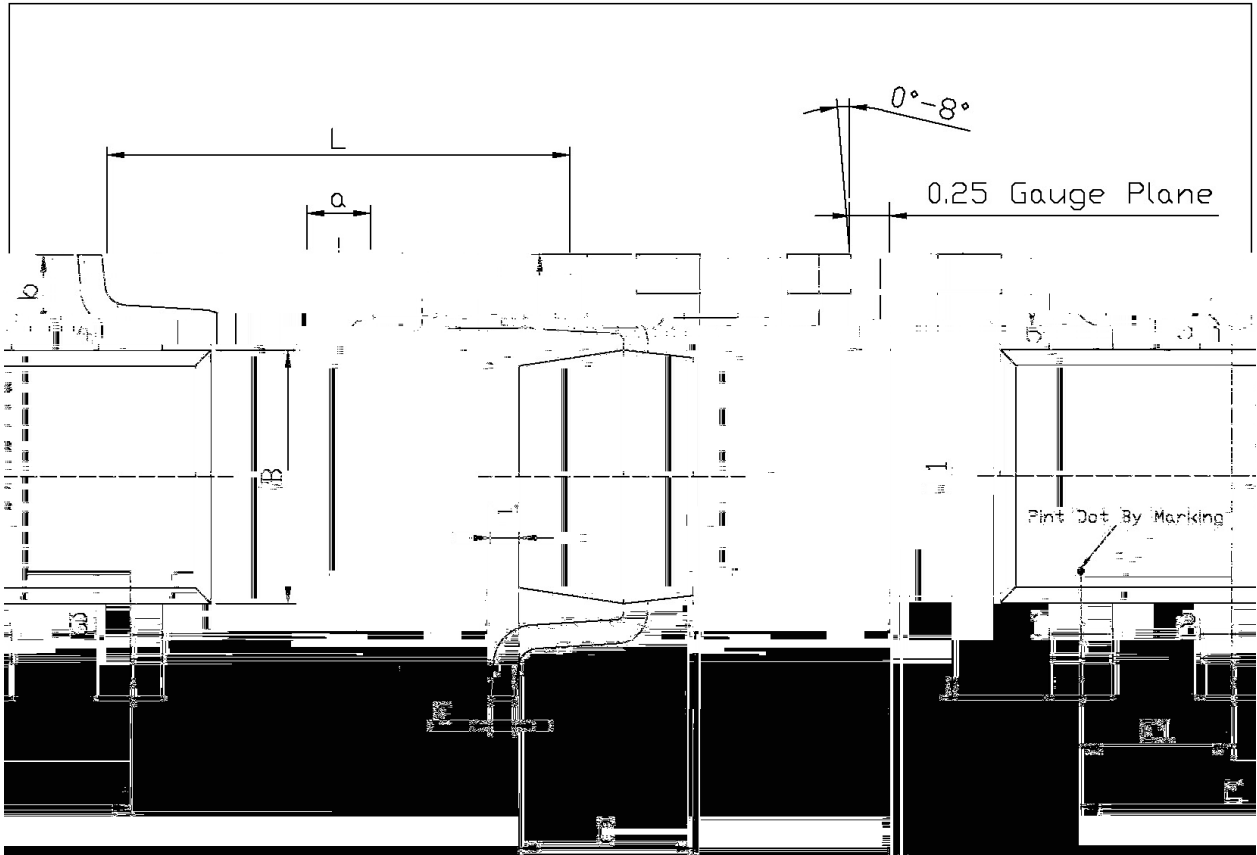
/ Marking

--	--

/ Electrical Characteristic Curve



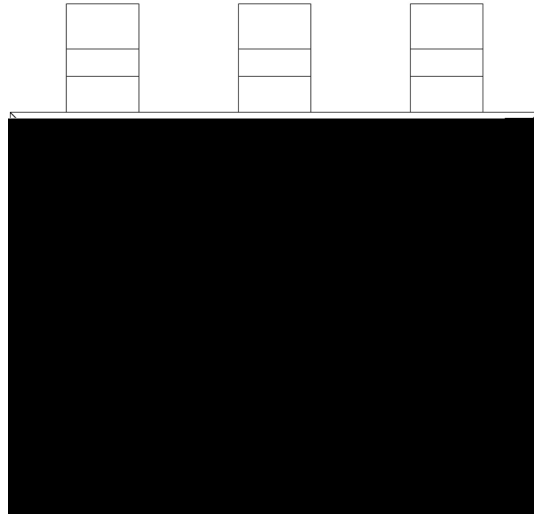
/ Package Dimensions



DIMENSIONS OF MARKING		DIMENSIONS OF MARKING			DIMENSIONS OF MARKING		
Pin	Mark	Pin	Mark	Pin	Mark	Pin	Mark
1	1001	1	1001	1	1001	1	1001
2	1002	2	1002	2	1002	2	1002
3	1003	3	1003	3	1003	3	1003
4	1004	4	1004	4	1004	4	1004
5	1005	5	1005	5	1005	5	1005
6	1006	6	1006	6	1006	6	1006
7	1007	7	1007	7	1007	7	1007
8	1008	8	1008	8	1008	8	1008
9	1009	9	1009	9	1009	9	1009
10	1010	10	1010	10	1010	10	1010

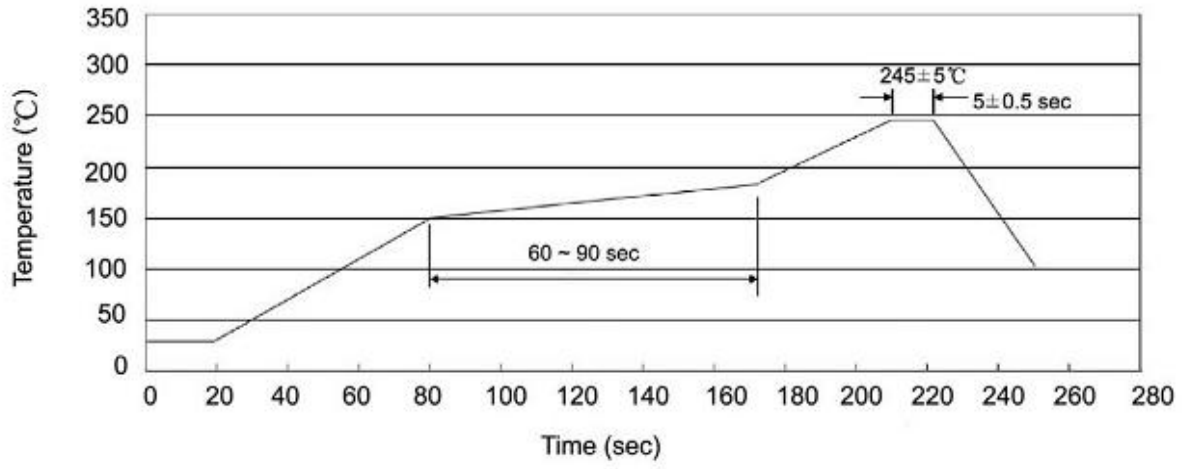


/ Marking Instructions



8205

() / Temperature Profile for IR Reflow Soldering(Pb-Free)



± ± ± ±

/ Resistance to Soldering Heat Test Conditions

± ± °C