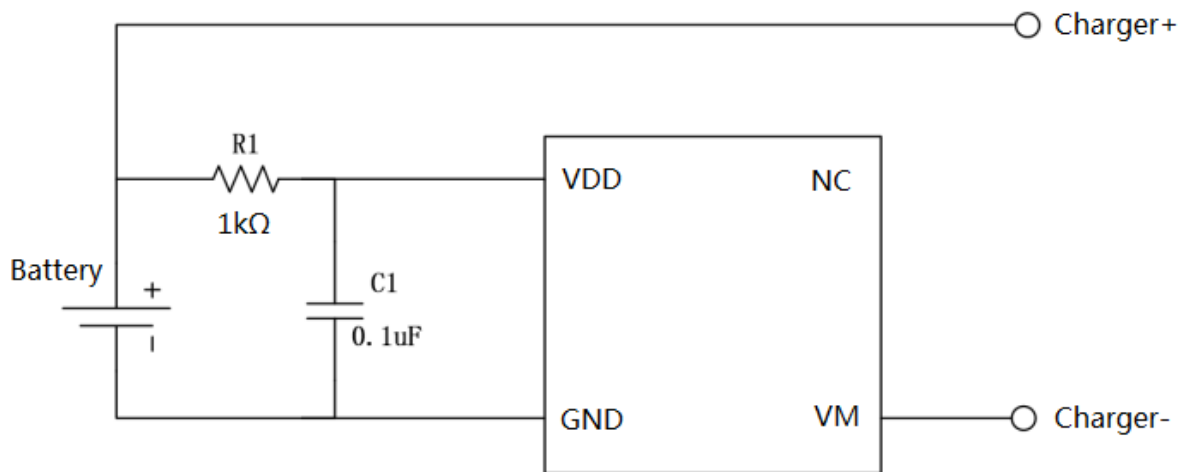


9I : C\* (\*' ; D < D F J =<K  
D F J =<K

9I : C\* (\*' ; D < J F K) \* \$,

- ◆ (- d D F J =<K
- ◆ J F K) \* \$,
- ◆
- ◆
- ◆ \*% μ8
- ◆ ' % μ8
- ◆



I ( (k \$)k # : ( ' \$(I =  
I ( (B

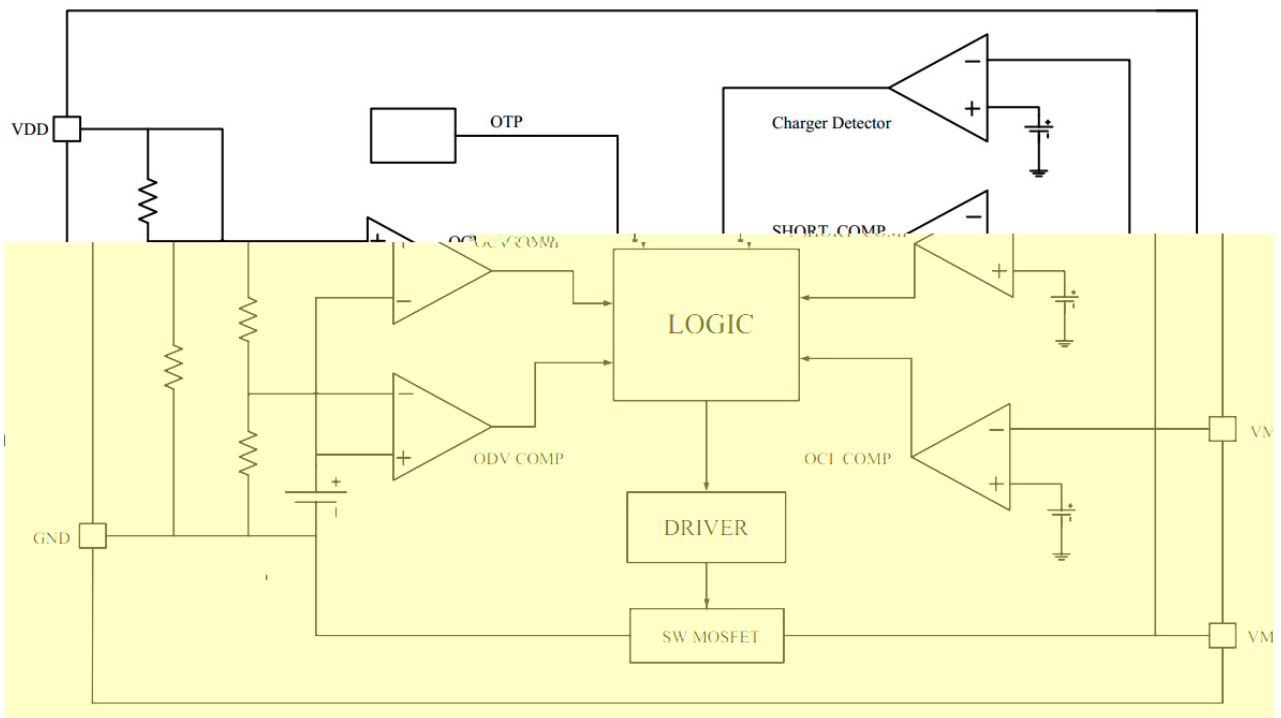


Pin	Symbol	Function
1	NC	No connection
2	GND	Ground
3	VDD	Power supply

See Marking Instructions.

/Parameter	/Symbol	/Value	/Unit
V <sub>DD</sub> input pin voltage	V <sub>IN</sub>	-0.3 to +8	V
V <sub>VM</sub> input pin voltage	V <sub>VM</sub>	-8 to +10	V
Maximum Junction Temperature	T <sub>J</sub>	-40 to +145	
Storage Temperature	T <sub>stg</sub>	-55 to +145	
Power Dissipation	P <sub>D</sub> (T <sub>C</sub> )		

Parameter	Symbol	Test Condition	Min	Typ	Max	Unit
Over-temperature protection	OTP			145		
Over-temperature protection release temperature	OTPR			120		
Overcharge Voltage Detection Delay Time	T <sub>OCV</sub>			100		ms
Overdischarge Voltage Detection Delay Time	T <sub>ODV</sub>			100		ms
Overdischarge Current1 Detection Delay Time	T <sub>IOV1</sub>			8		ms
Overdischarge Current2 Detection Delay Time	T <sub>IOV2</sub>			2		ms
Load Short-Circuiting Detection Delay Time	T <sub>SHORT</sub>			150		μs



/

9I : C\* (\*' ; D <

D F J =<K

( - d

9I : C\* (\*' ; D <

/

/

Ž<sub>F</sub>: vŽ

Ž<sub>F</sub>: vŽ

9I : C\* (\*' ; D <

D F J =<K

Ž<sub>F</sub>: vŽ

(  
)

VD

Ž<sub>F</sub>: ? 8ž  
Ž<sub>f</sub> Znž

Ž<sub>F</sub>: I Ž

/

@ ? 8

Ž<sub>F</sub>: ž

D F J =<K

9I : C\* (\*' ; D <

/

Ž<sub>F</sub>: vŽ

Ž<sub>F</sub>: vŽ

9 C\* (\*' ; D <

A Ž ž

Ž<sub>@</sub>, E

F ; I Ž 9I : C\* (\*' ; D <

/

VD

VD

/

V

Ž

J ? F I K Ž

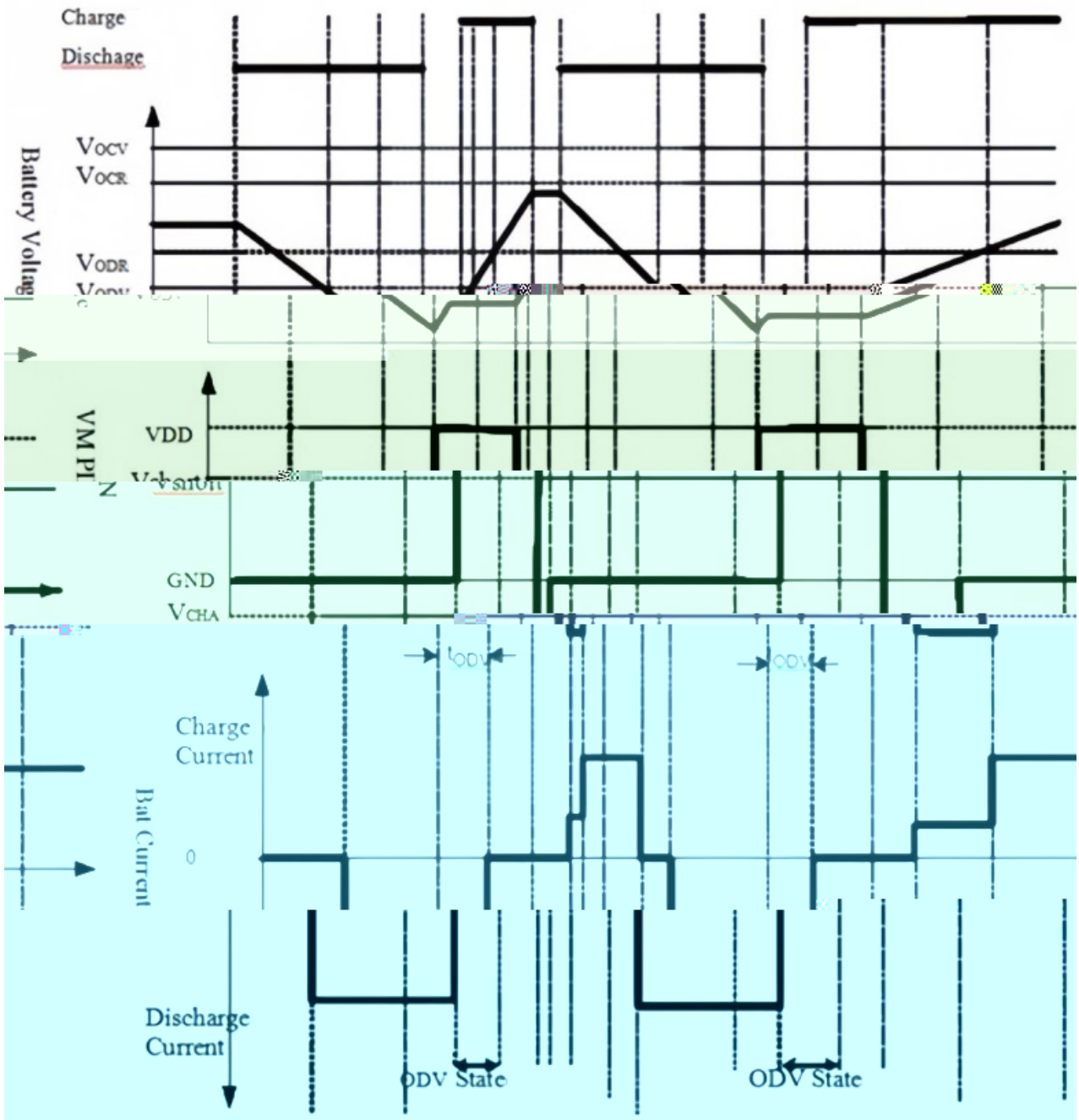
K J ? F I K

VD

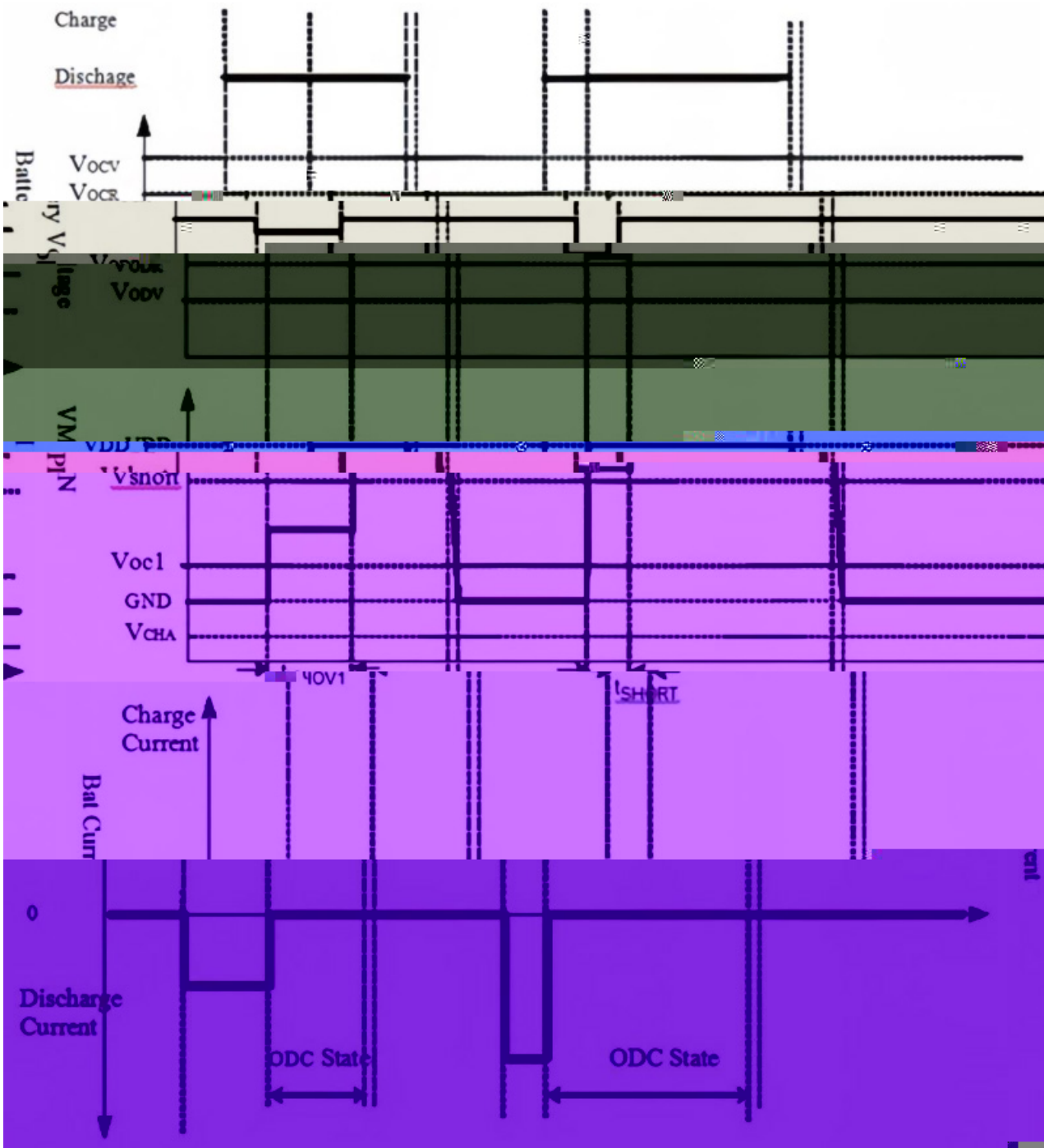


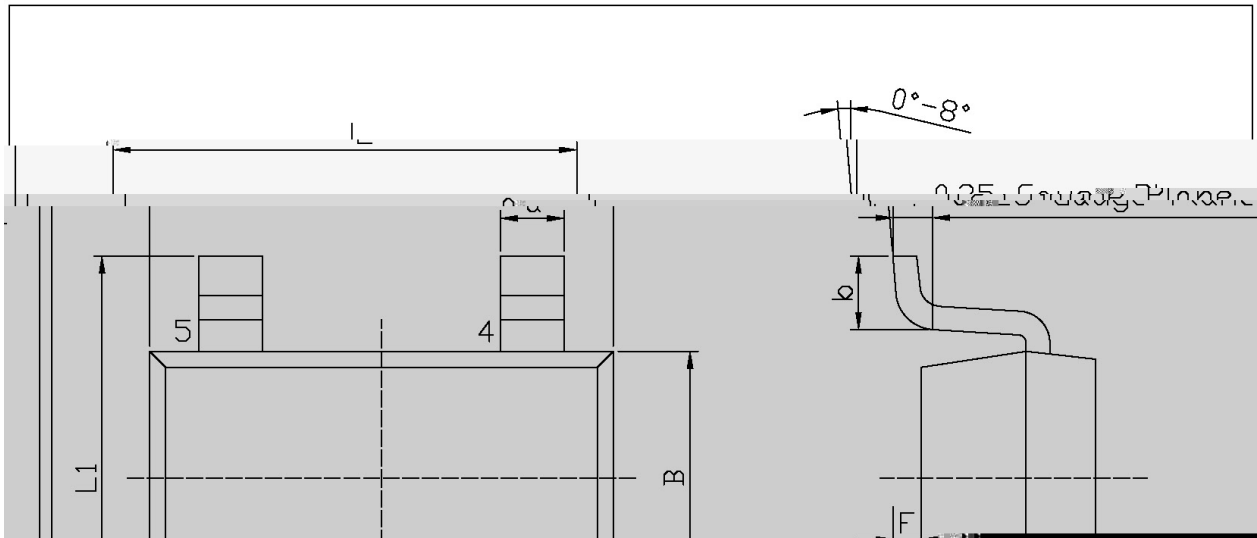
/

/

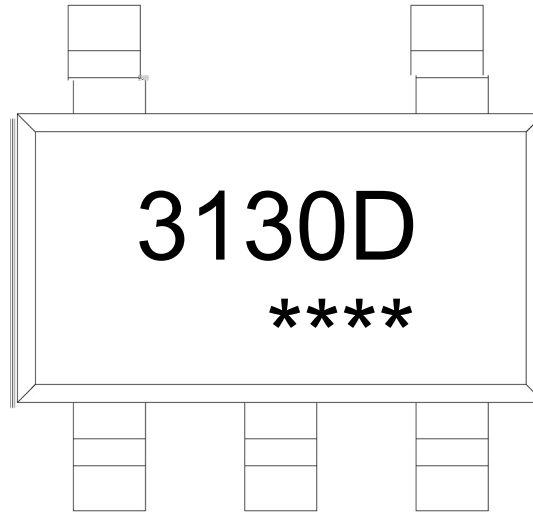


/





Symbol	Dimensions in Millimeters		Symbol	Dimensions in Millimeters	
	Min	Max		Min	Max
L	2.02	3.02	E1	0.85	1.05
B	1.50	1.70	a	0.35	0.50
C	0.90	1.30	c	0.10	0.20
E	1.80	2.00	F	0	0.15



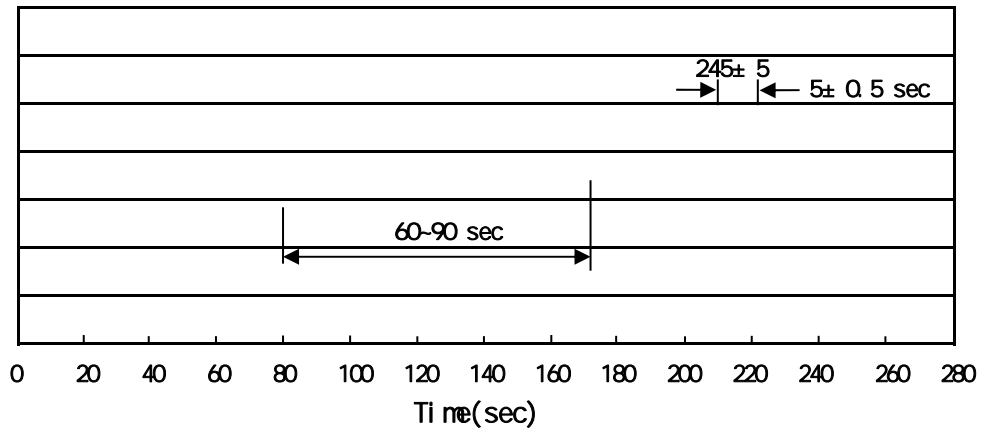
\* ( \* ! ;

!!!!

Note:

3130D: Product Type Code

\*\*\*\*: Lot No. Code, code change with Lot No.

**Temperature Profile for IR Reflow Soldering(Pb-Free)**


Note:

- |   |       |     |    |           |                                         |
|---|-------|-----|----|-----------|-----------------------------------------|
| 1 | 150   | 180 | 60 | 90sec;    | 1.Preheating:150~180 , Time:60~90sec.   |
| 2 | 245±5 |     |    | 5±0.5sec; | 2.Peak Temp.:245±5 , Duration:5±0.5sec. |
| 3 |       |     | 2  | 10 /sec.  | 3. Cooling Speed: 2~10 /sec.            |

260±5

10±1 sec.

Temp.:260±5

Time:10±1 sec

/ REEL

Package Type	Units					Dimension (unit mm <sup>3</sup> )		
	Units/Reel	Reels/Inner Box	Units/Inner Box	Inner Boxes/Outer Box	Units/Outer Box	Reel	Inner Box	Outer Box
SOT23-5/6	3,000	10	30,000	4	120,000	7 ×8	210×205×205	445×435×230