

μ

° °



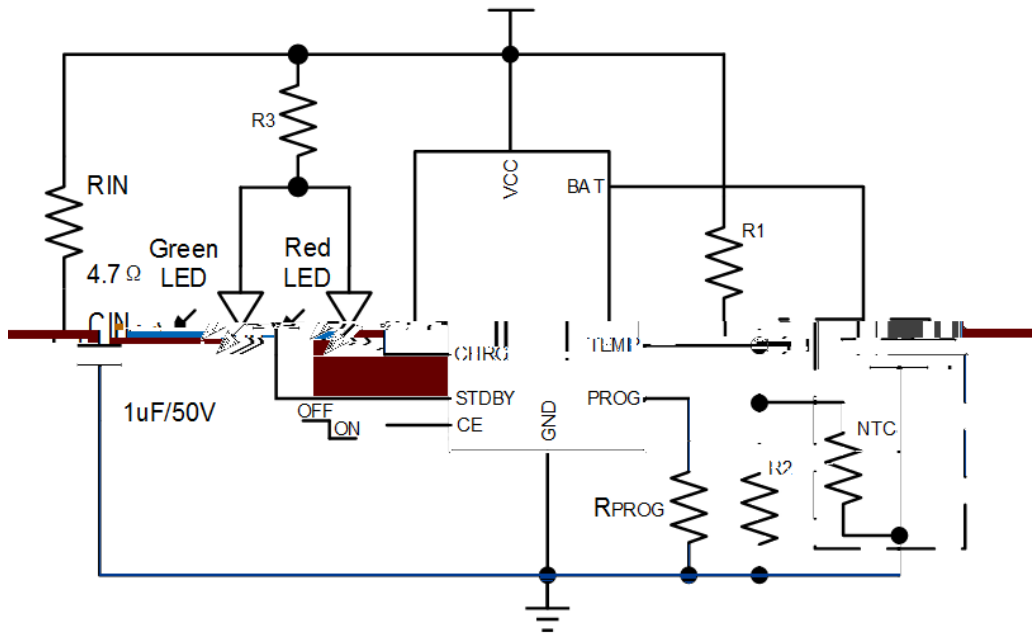
μ

μ

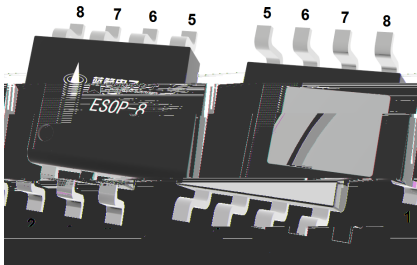


PDA's MP3

USB



1	VCC	VCC	CIN	4.7	VCC		
2	CE	MCU	CE	GND	BRCL4058PSE-4.2	CE	VCC



	PROG	GND







◆

±

◆

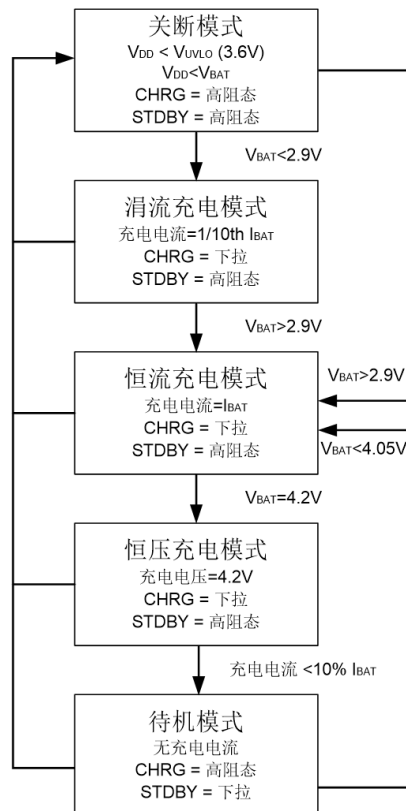
◆

×

3.00	305
2.32	400
2.05	450
1.91	485
1.80	520
1.58	590
1.47	640
1.37	690
1.27	755
1.21	800
1.10	910
1.02	1000



μ





◆

μ

	LED CHRG	LED STDBY
BAT    10uF (TEMP=GND)	LED    LED	1-4s

◆

◆

×

×



$$V_{TEMPL} = \frac{R2 || RTL}{R1 + R2 || RTL} V_{IN}$$

$$V_{TEMPL} = \frac{R2 || RTH}{R1 + R2 || RTH} V_{IN}$$

~~$$V_{TEMPL} = V_{HIGH} = k2 \times V_{CC} (k2 = 0.9)$$

$$V_{TEMPH} = V_{LOW} = k1 \times V_{CC} (k1 = 0.45)$$~~

$$R1 = \frac{RTL \times RTH (k2 - k1)}{(RTL - RTH) k2 \times k1}$$

~~$$R1 = \frac{RTL \times RTH (k2 - k1)}{(RTL - RTH) k2 \times k1}$$~~

$$R1 = \frac{RTL \times RTH (k2 - k1)}{(RTH - RTL) k2 \times k1}$$

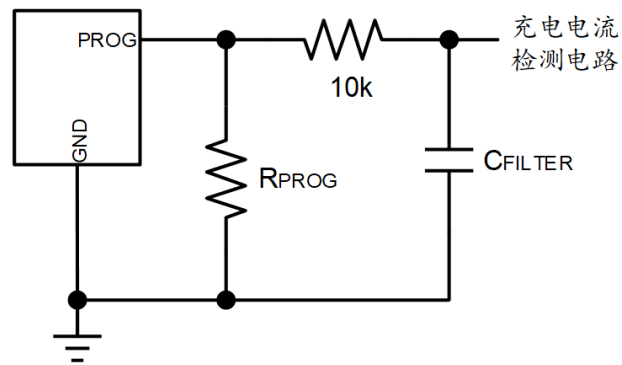
$$R2 = \frac{RTL \times RTH (k2 - k1)}{RTH (k1 - k2 \times k1) - RTL (k2 - k2 \times k1)}$$



◆

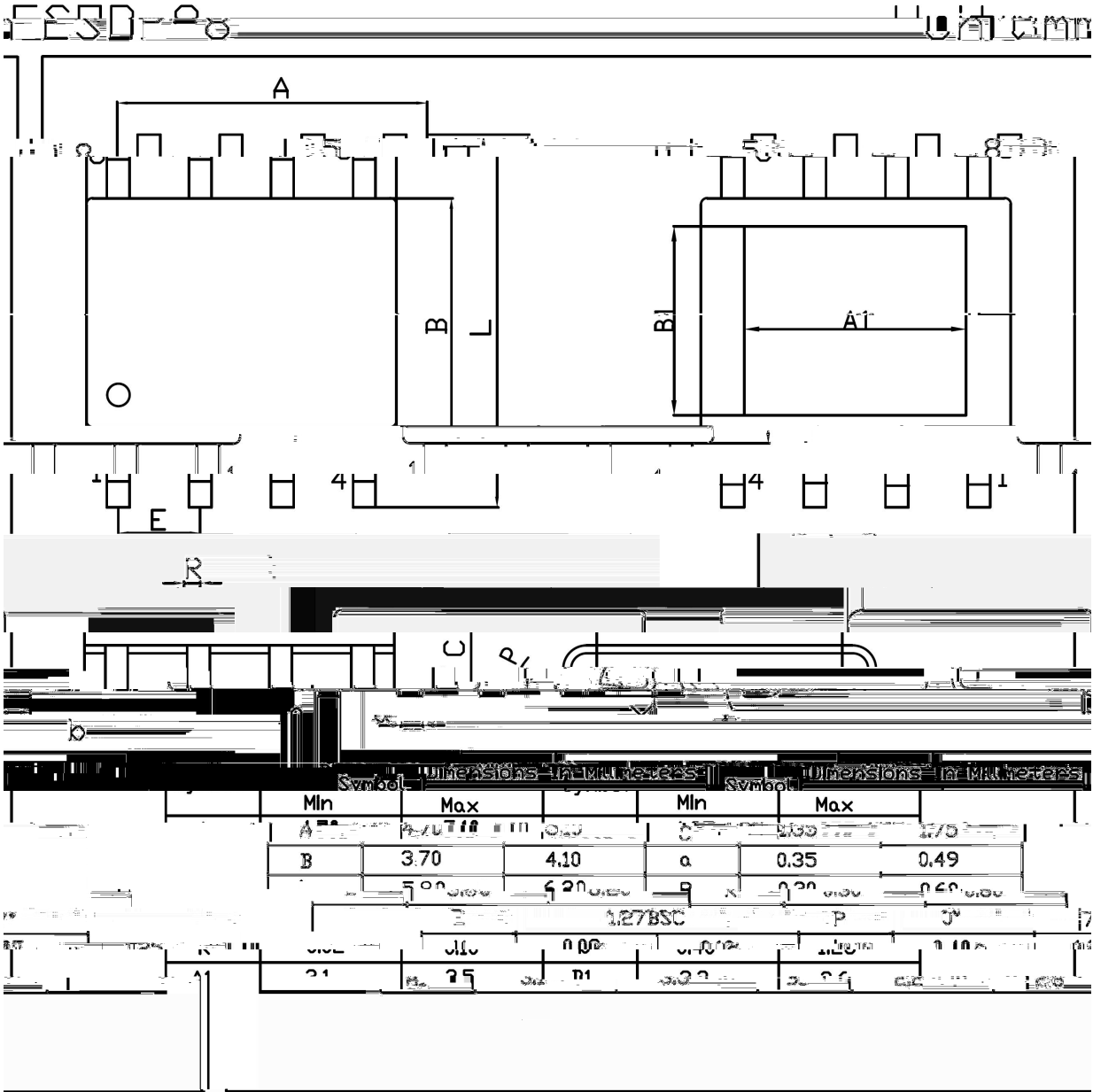
◆

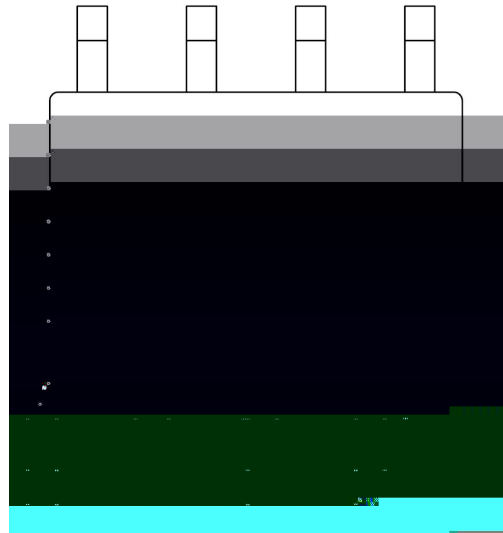
$$R_{\text{PROG}} \leq \frac{1}{2\pi \cdot 10^5 \cdot C_{\text{PROG}}}$$



◆







BR

4058P

42

\*\*\*\*

4.2v

