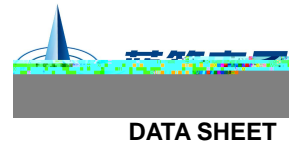




# BRC07350T

Rev.A Aug.-2022



## / Descriptions

SOT-89

Low dropout linear regulator in a SOT-89 Plastic Package .

## / Features

20V

1.5 $\mu$ A

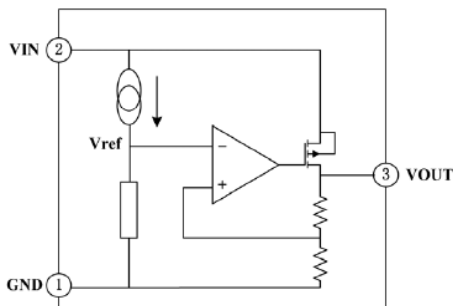
$\pm 2\%$

Low power consumption,Low voltage drop,Small temperature drift coefficient,High input voltage up to 20V,The static current 1.5 $\mu$ A,The output voltage accuracy: $\pm 2\%$ ,HF Product.

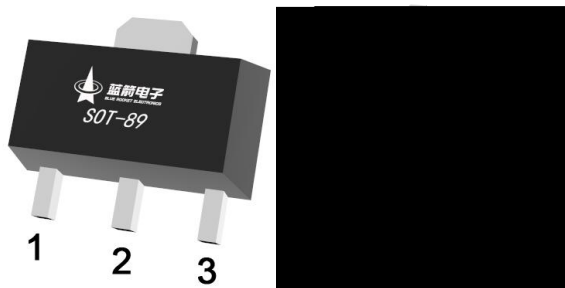
## / Applications

For use in power equipment,Communication equipment,Audio and video equipment.

## / Equivalent Circuit



## / Pinning



PIN1 GND    PIN 2 VIN    PIN 3 VOUT

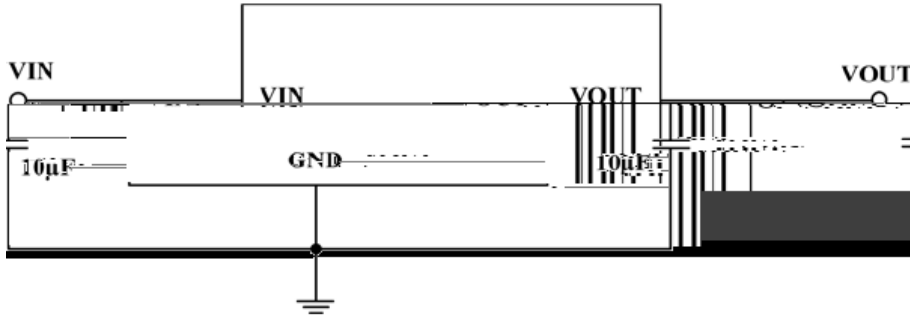
## / Marking

/ See Marking Instructions.

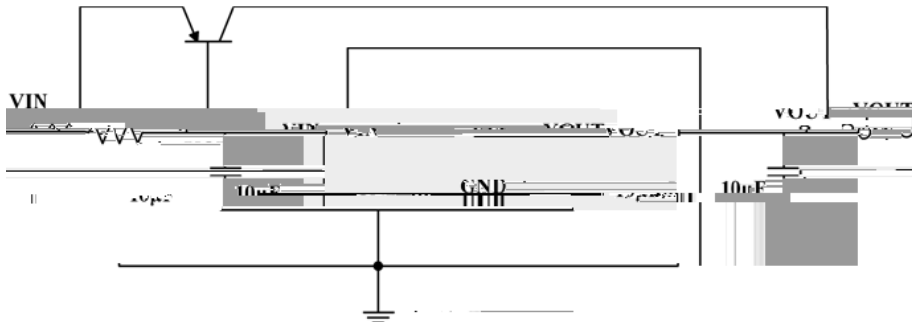


**/ Typical Application Circuit**

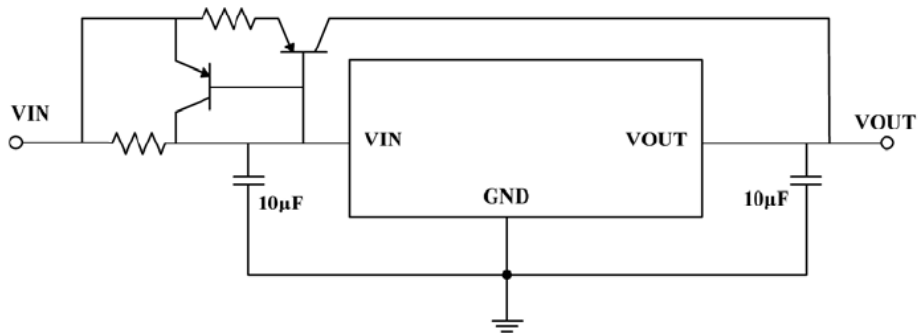
/ Basic Application

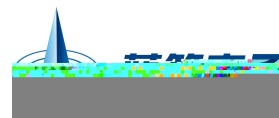


/ High Output Current Voltage Regulator



/ Short-Circuit Protection





**/ Typical Application Circuit**

/ Circuit

h

**/ Package Dimensions**

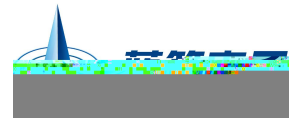
SOT-29

单位: mm

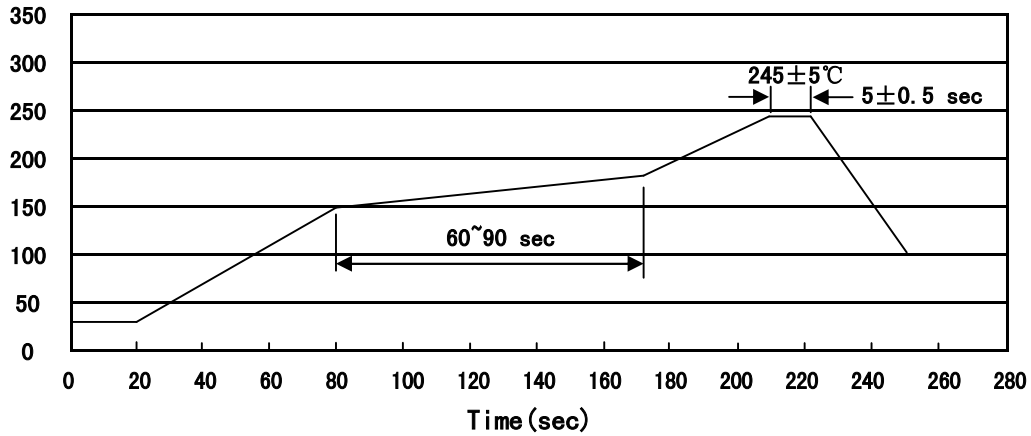


Symbol	Dimensions In Millimeters		Symbol	Dimensions In Millimeters	
	Min	Max		Min	Max
A	4.4	4.7	a1	0.36	0.56
B	2.25	2.65	a	0.28	0.50

*W*



( ) /



Note:

- |   |       |     |    |           |  |
|---|-------|-----|----|-----------|--|
| 1 | 150   | 180 | 60 | 90sec;    | 1.Preheating:150~180°C, Time:60~90sec.   |
| 2 | 245±5 |     |    | 5±0.5sec; | 2.Peak Temp.:245±5°C, Duration:5±0.5sec. |
| 3 |       |     | 2  | 10°C/sec. | 3. Cooling Speed: 2~10°C/sec.            |

**/ Resistance to Soldering Heat Test Conditions**

260±5°C                      10±1 sec.                      Temp.:260±5°C                      Time:10±1 sec

**/ Packaging SPEC.**

/ REEL

Package Type	Units					Dimension (unit mm)		
	Units/Reel 只/卷盘	Reels/Inner Box 卷盘/盒	Units/Inner Box 只/盒	Inner Boxes/Outer Box 盒/箱	Units/Outer Box 只/箱	Reel	Inner Box	Outer Box
SOT-89	1,000	7	7,000	6	42,000	7" ×12	180×120×180	390×385×205

**/ Notices**