

/ Descriptions

SOT23-3

/ Features

24V

1.5 μ A

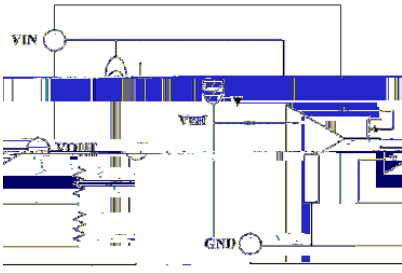
$\pm 2\%$

μ

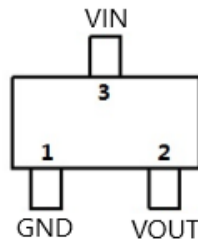
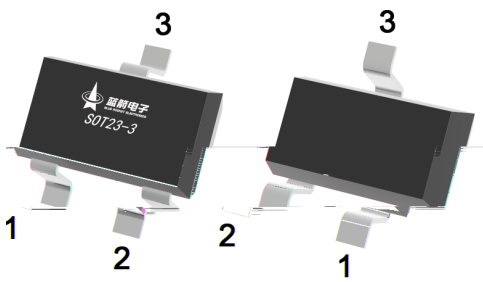
$\pm 2\%$

/ Applications

/ Equivalent Circuit

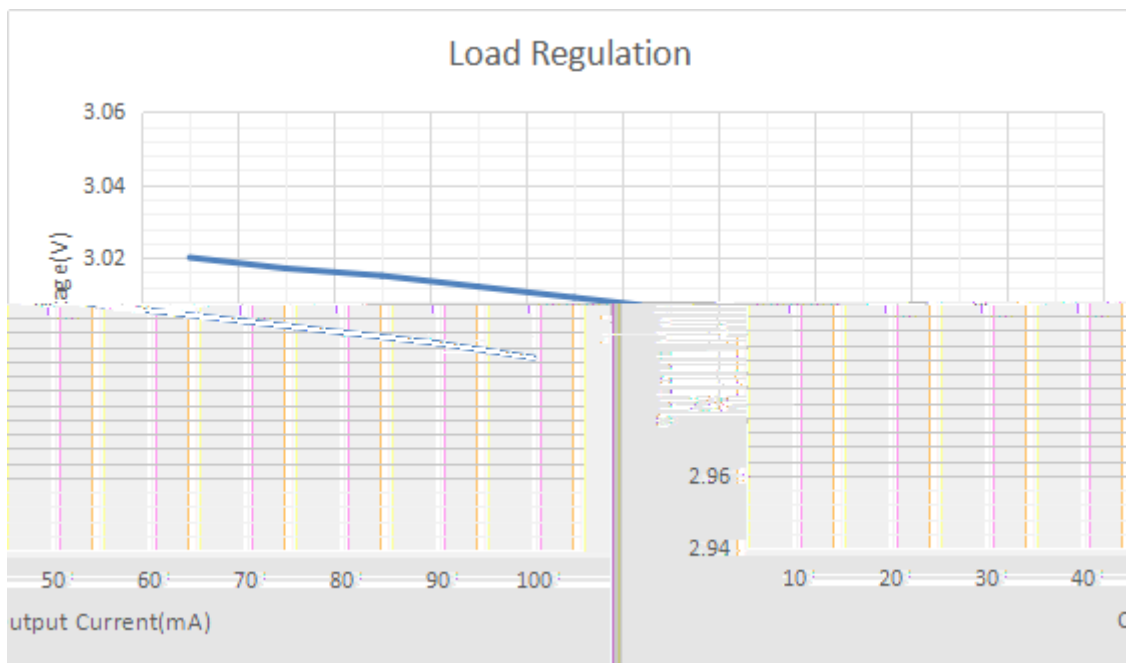
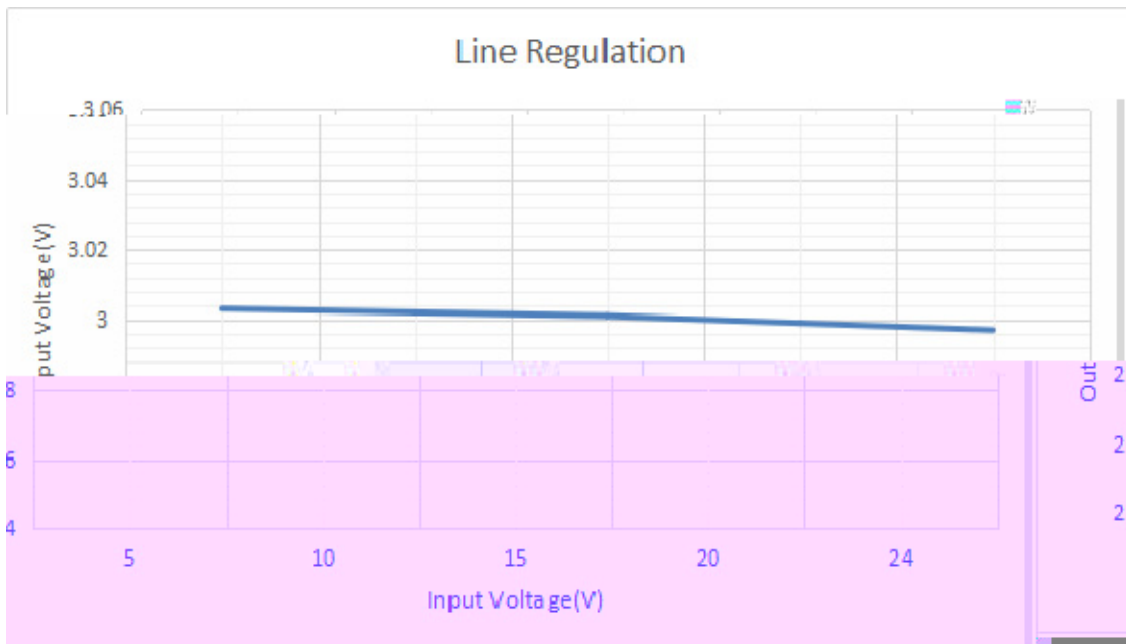


/ Pinning

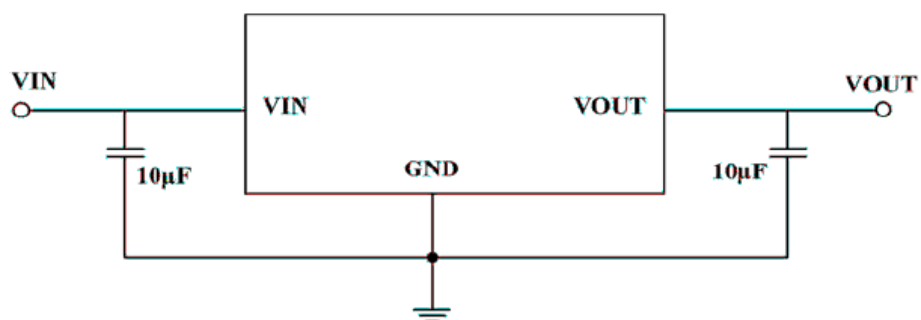


/ Marking

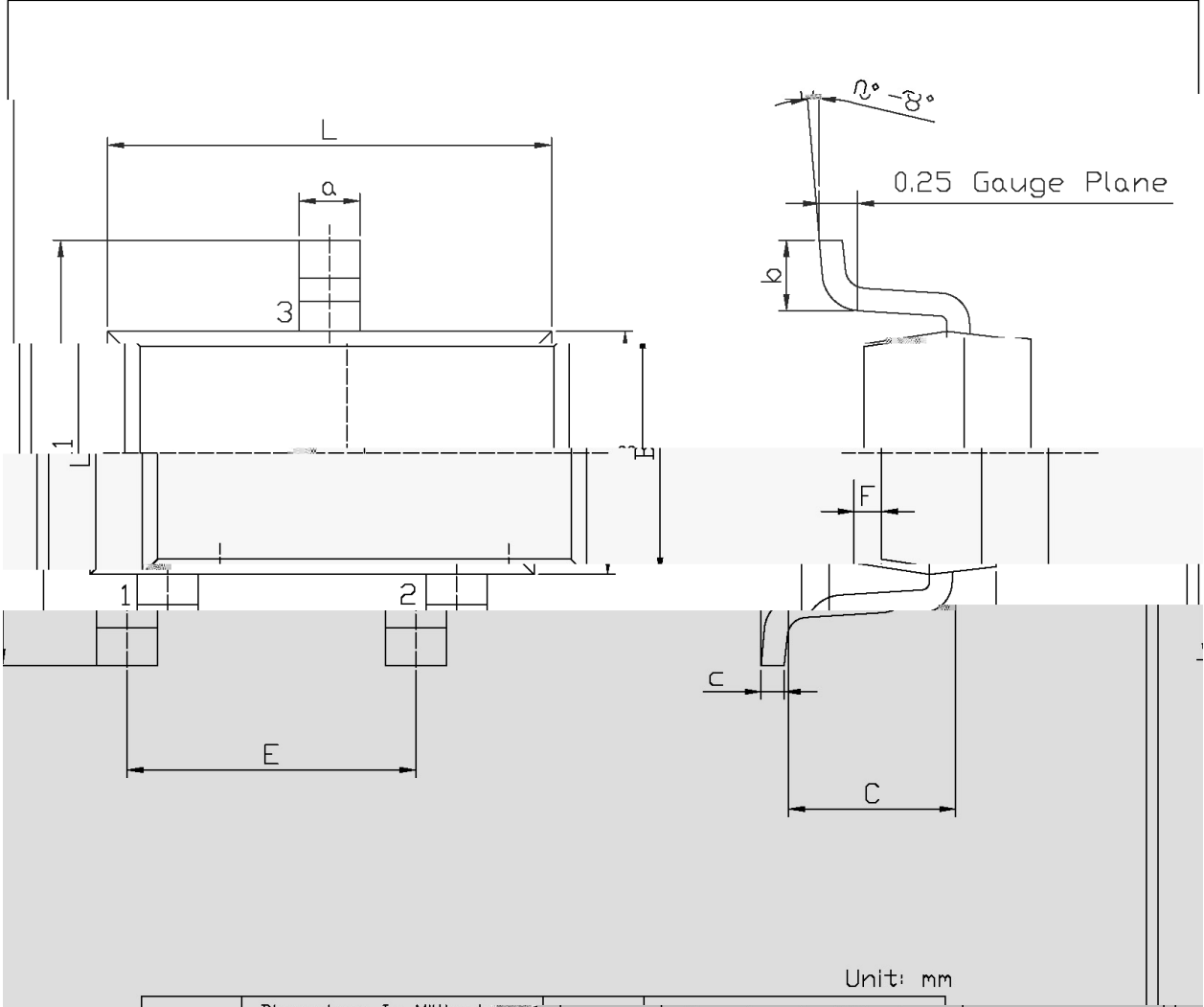
/ Electrical Characteristic Curve



/ Typical Application Circuit

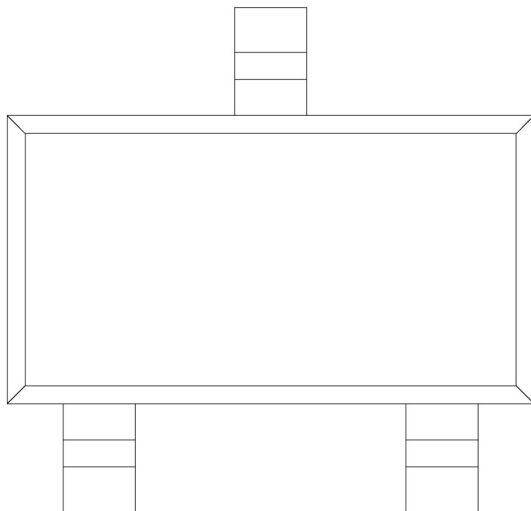


/ Package Dimensions

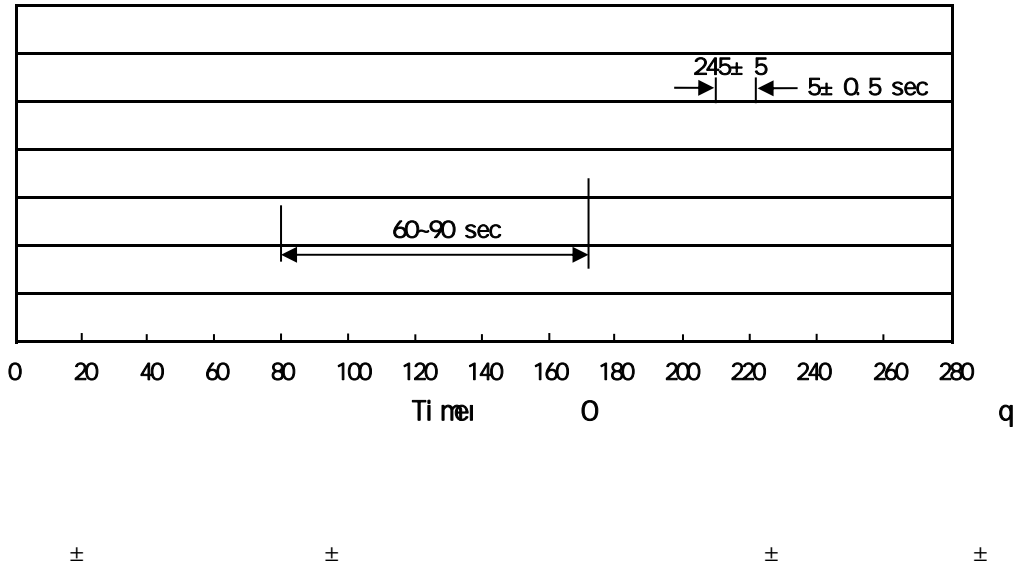


Dimension	Symbol	Value	Unit
Lead length	L	3.82	mm
Lead thickness	F	2.00	mm
Lead width	C	1.25	mm
Lead spacing	E	0.50	mm

/ Marking Instructions



() / Temperature Profile for IR Reflow Soldering(Pb-Free)



/ Resistance to Soldering Heat Test Conditions

± ±

/ Packaging SPEC.

	Units/Reel	Reels/Inner Box	Units/Inner Box	Inner Boxes/Outer Box	Units/Outer Box	Reel	Inner Box	Outer Box
	/	/	/	/	/			

/ Notices