

/ Descriptions

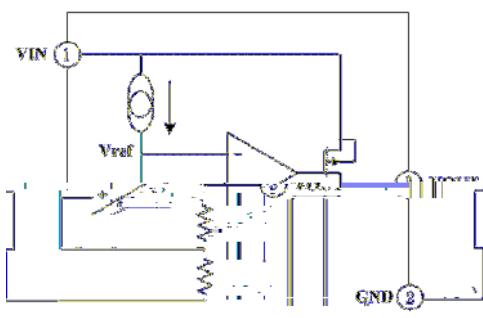
SOT-89

/ Features

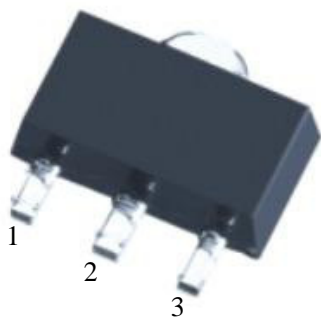
AEC-Q100	30V	2.5 μ A	\pm 2%
	μ	\pm	

/ Applications

/ Equivalent Circuit



/ Pinning



/ Marking

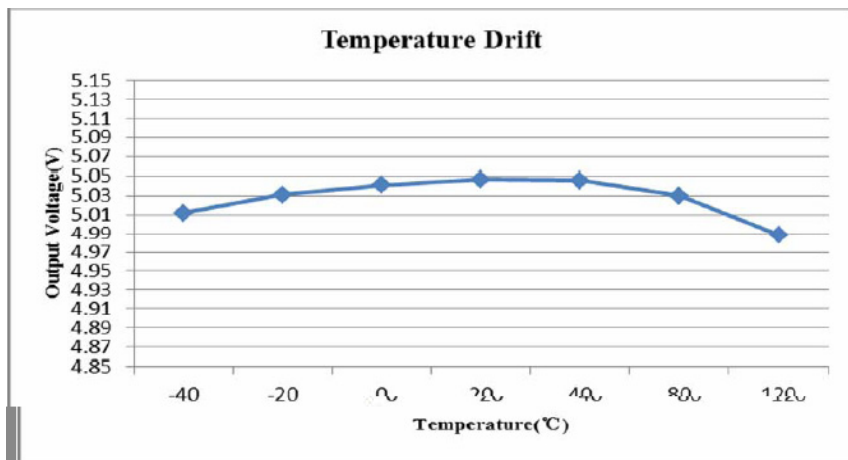
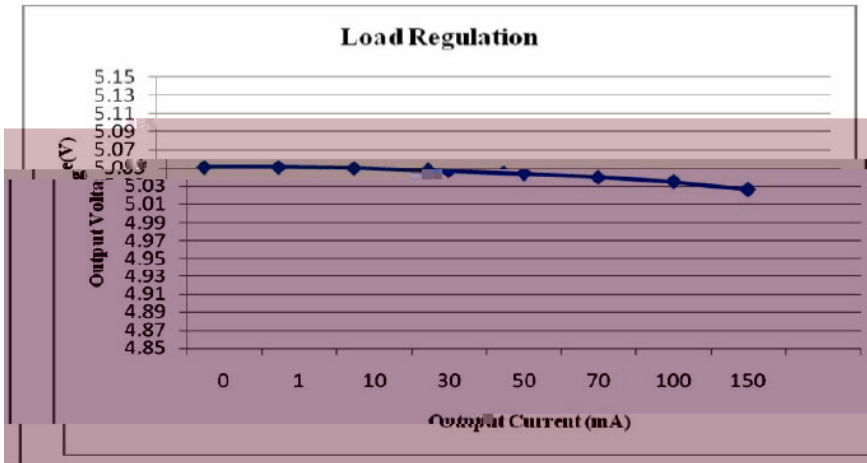
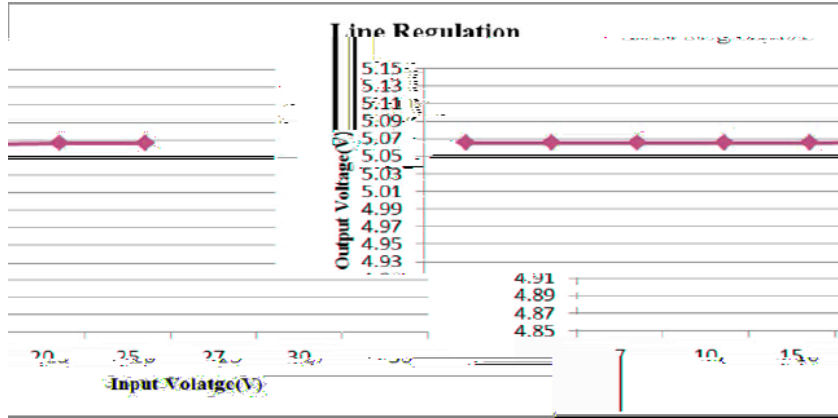
/

/ Absolute Maximum Ratings(Ta=25)

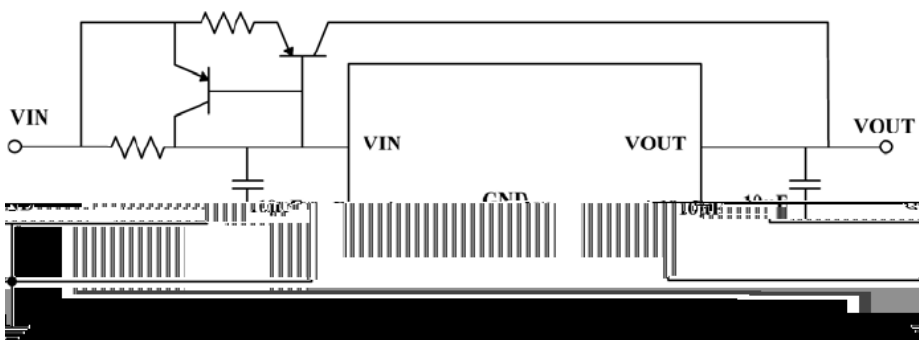
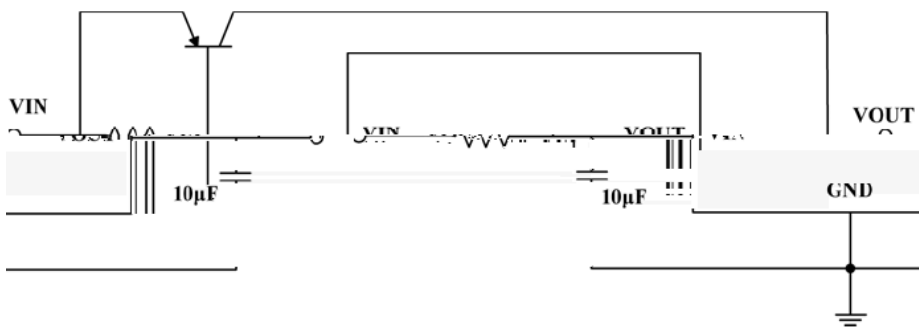
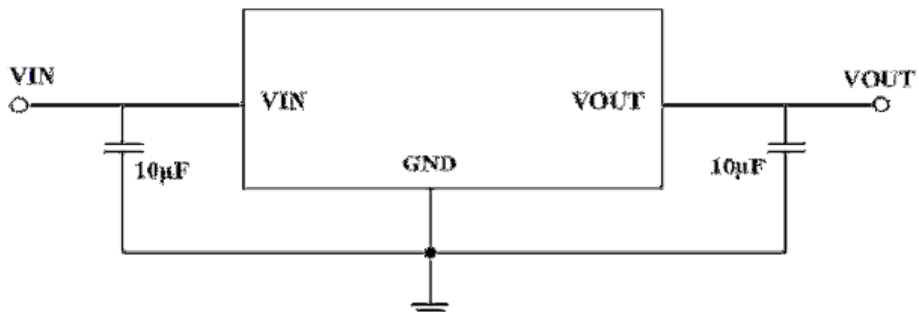
/ Electrical Characteristics(Ta=25)

	△	≦ ≦				
		△				
						μ
	△ △	≦ ≦				
	△ △	°C ≦ ≦ °C				°C

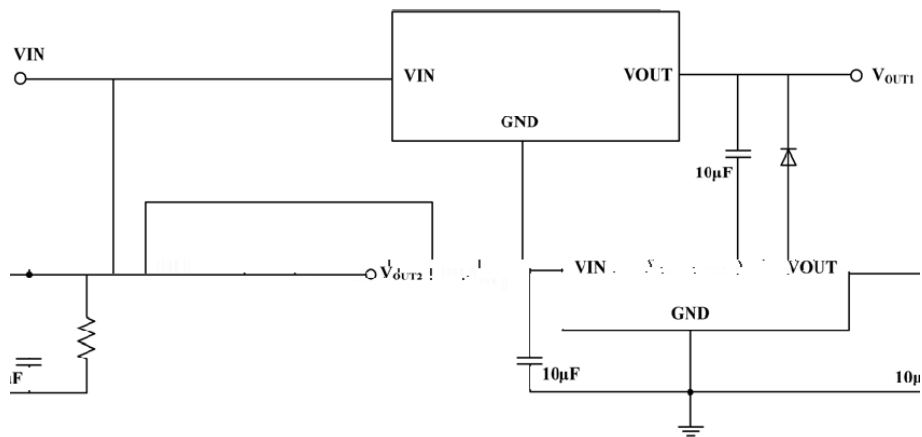
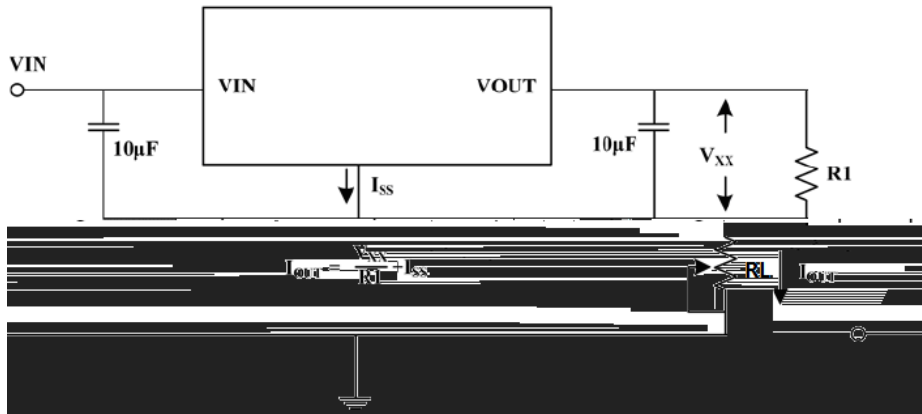
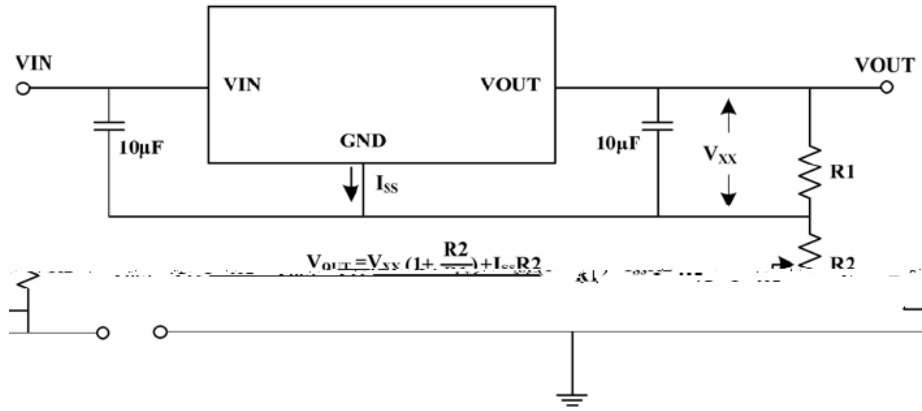
/ Electrical Characteristic Curve



/ Typical Application Circuit



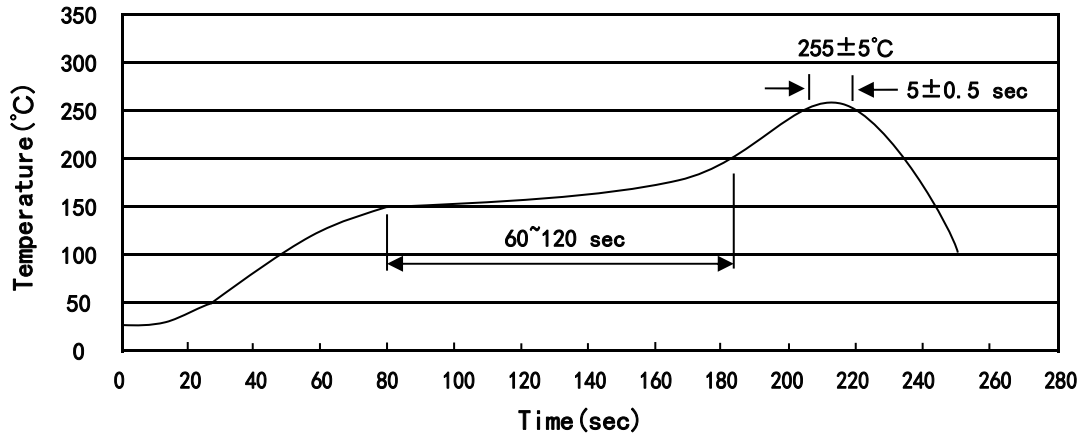
/ Typical Application Circuit



BRCO7550RTAQ

DATA SHEET

() /



± ± ± ±

/ Resistance to Soldering Heat Test Conditions

± ±

/ Packaging SPEC.

	1,000	7	7,000	6	42,000	"		

/ Notices