

BRCS060N15SHRA

Rev.A Apr.-2023

/ Descriptions

TO-220 N
N-CHANNEL MOSFET in a TO-220 Plastic Package.

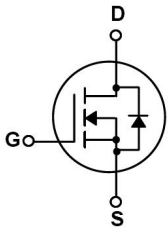
/ Features

$V_{DS}=150V$ $I_D=123A$ $V_{GS}=\pm 20V$
 $R_{DS(on)}@10V$ 6.2m (Type.5.8m)
HF Product.

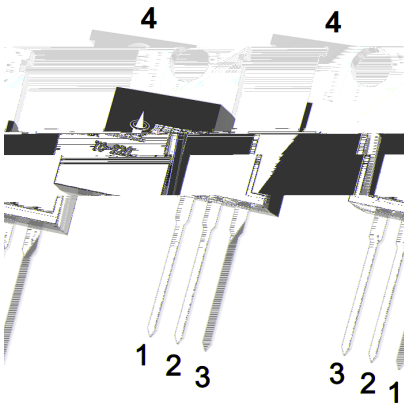
/ Applications

Telecom,Industrial Power Supply,Load switch.

/ Equivalent Circuit



/ Pinning



PIN1 G PIN 2 4 D PIN 3 S

/ Marking

See Marking Instructions.

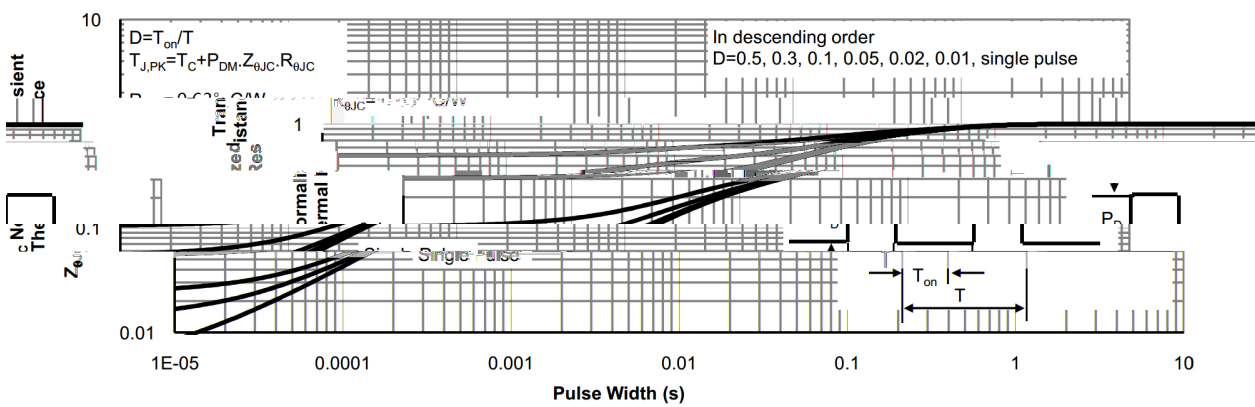
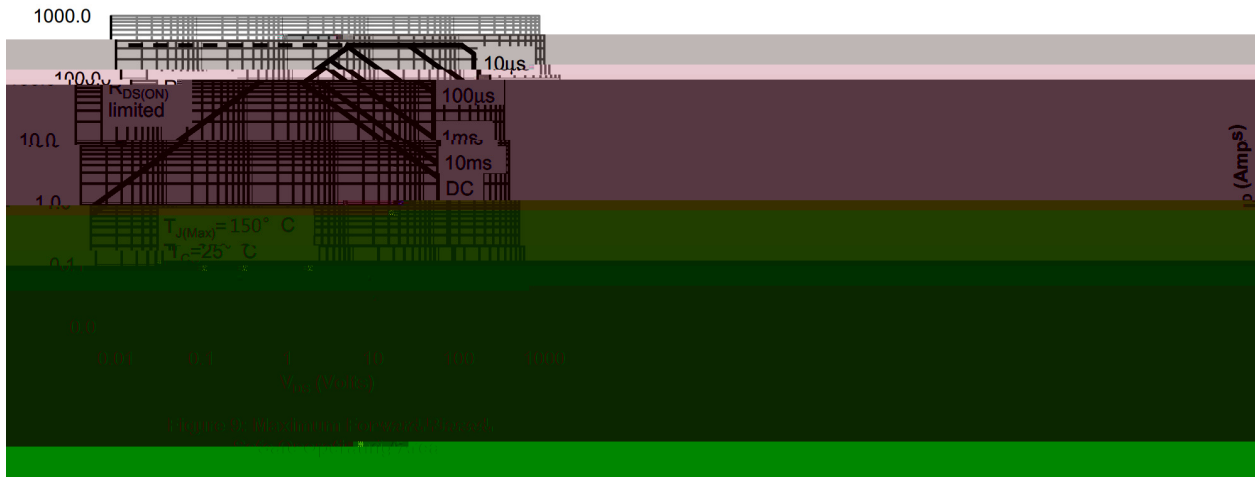
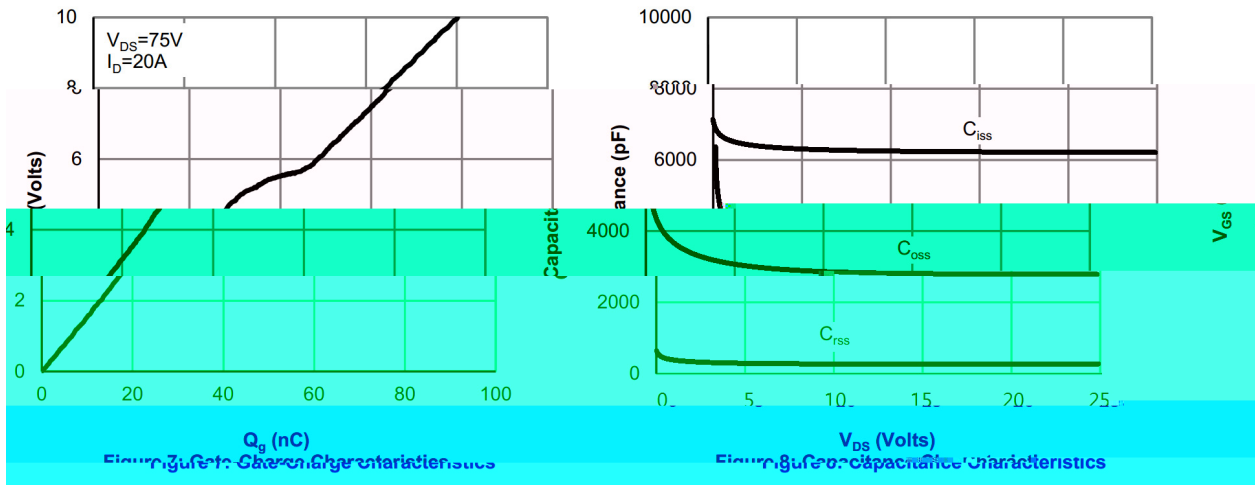
/ Electrical Characteristics(Ta=25)

Parameter	Symbol	Test Conditions	Min	Typ	Max	Unit
Turn-On Delay Time	$t_{d(on)}$	$V_{GS}=10V$ $V_{DS}=75V$ $R_L=2.5$ $R_{GEN}=3$		27.3		ns
Turn-On Rise Time	t_r			21		
Turn-Off Delay Time	$t_{d(off)}$			50.1		
Turn-Off Fall Time	t_f			29.3		

BRCS060N15SHRA

Rev.A Apr.-2023

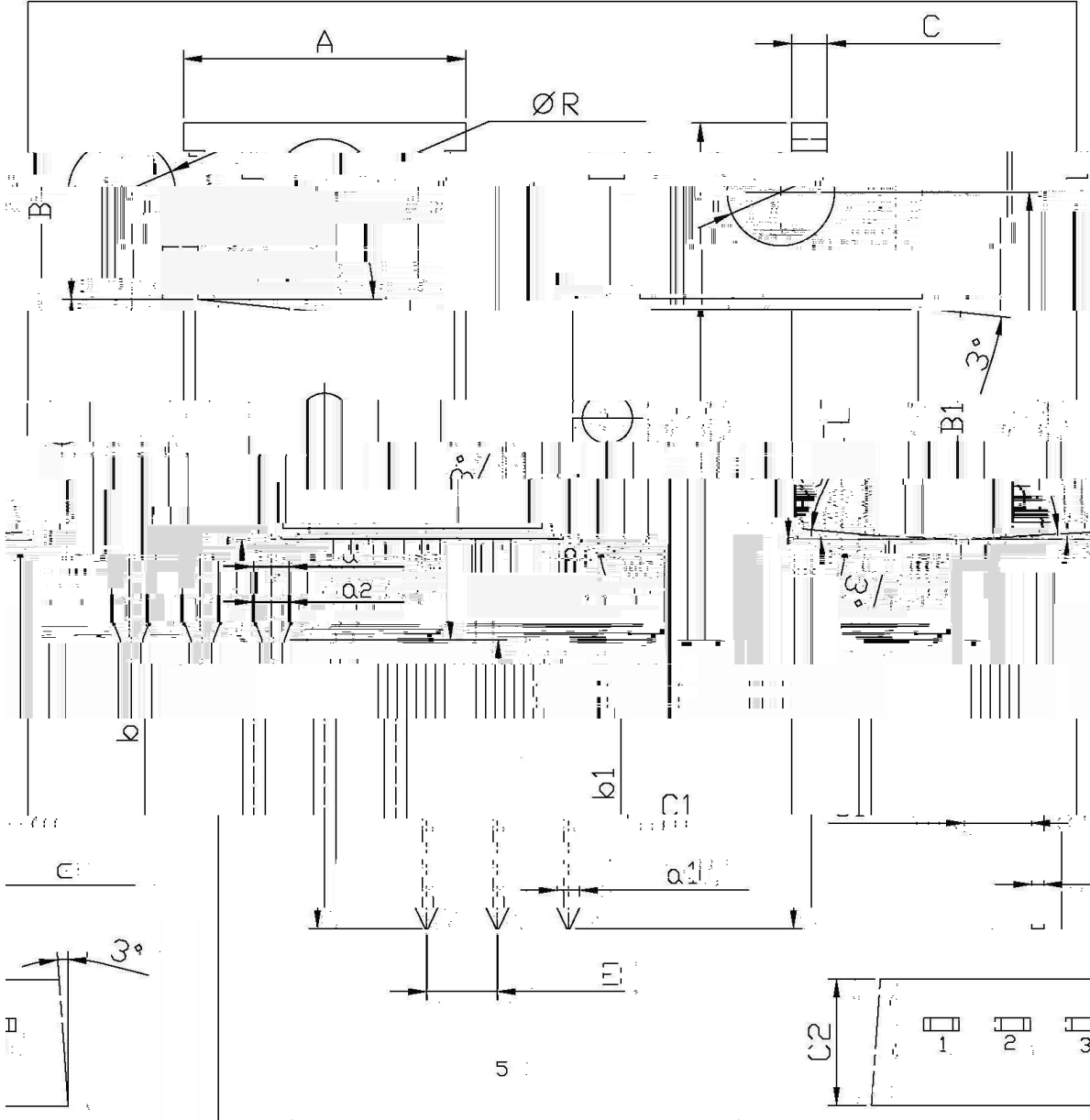
/ Electrical Characteristic Curve



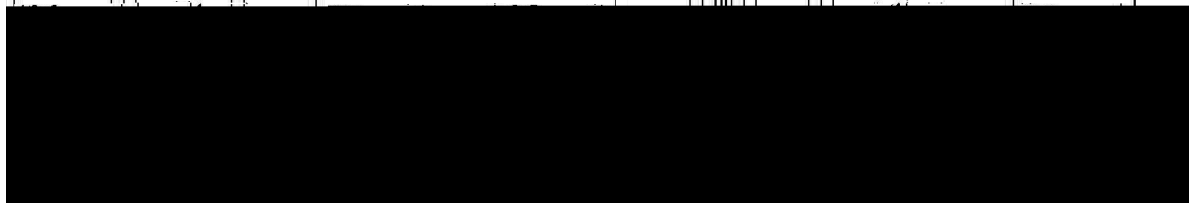
/ Package Dimensions

TO-220

单位: mm



Dimensions In Millimeters			Dimensions In Millimeters		
Symbol	Min	Max	Symbol	Min	Max
A	9.8	10.2	C	15.7	16.1
B	6.3	6.7	B1	12.6	13.6
R	9.0	9.4			
a1	2.6	2.6			
a2	2.6	2.6			
b1	2.6	2.6			
c1	2.6	2.6			



/ Marking Instructions

BR

060N15SH

Note:

BR: Company Code

060N15SH: Product Type

****: Lot No. Code, code change with Lot No

() / Temperature Profile for Dip Soldering(Pb-Free)

1	25	150	60	90sec;	Note:	1.Preheating:25~150 , Time:60~90sec.
2	255	5	5	0.5sec;		2.Peak Temp.:255 5 , Duration:5 0.5sec.
3			2	10 /sec.		3. Cooling Speed: 2~10 /sec.

/ Resistance to Soldering Heat Test Conditions

270	5	10	1 sec.	Temp.:270±5	Time:10±1 sec
-----	---	----	--------	-------------	---------------

/ Packaging SPEC.

/ BULK

Package Type TO-220/F	Units ;>û !H					Dimension ;>û p . (unit /Emm³)		
	Units/Bag />Á	Bags/Inner Box >Á-	Units/Inner Box /-	Inner Boxes/Outer Box - /!ç	Units/Outer Box /!ç	Bag>Á	Inner Box	Outer Boxç
TO-220/F	200	10	2,000	5	10,000	135x190	237x172x102	560x245x195

/ TUBE

Package Type TO-220/F	Units ;>û !H					Dimension ;>û p . (unit /Emm³)		
	Units/Tube /•1x	Tubes/Inner Box •1x/-	Units/Inner Box /-	Inner Boxes/Outer Box - /!ç	Units/Outer Box /!ç	Tube•1x	Inner Box	Outer Boxç
TO-220/F	50	20	1,000	5	5,000	532x31.4x5.5	555x164x50	575x290x180

/ Notices