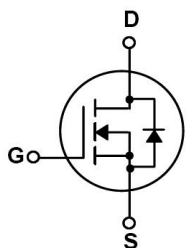


/ Descriptions

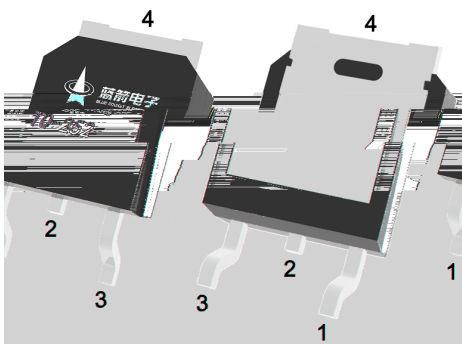
/ Features

/ Applications

/ Equivalent Circuit



/ Pinning



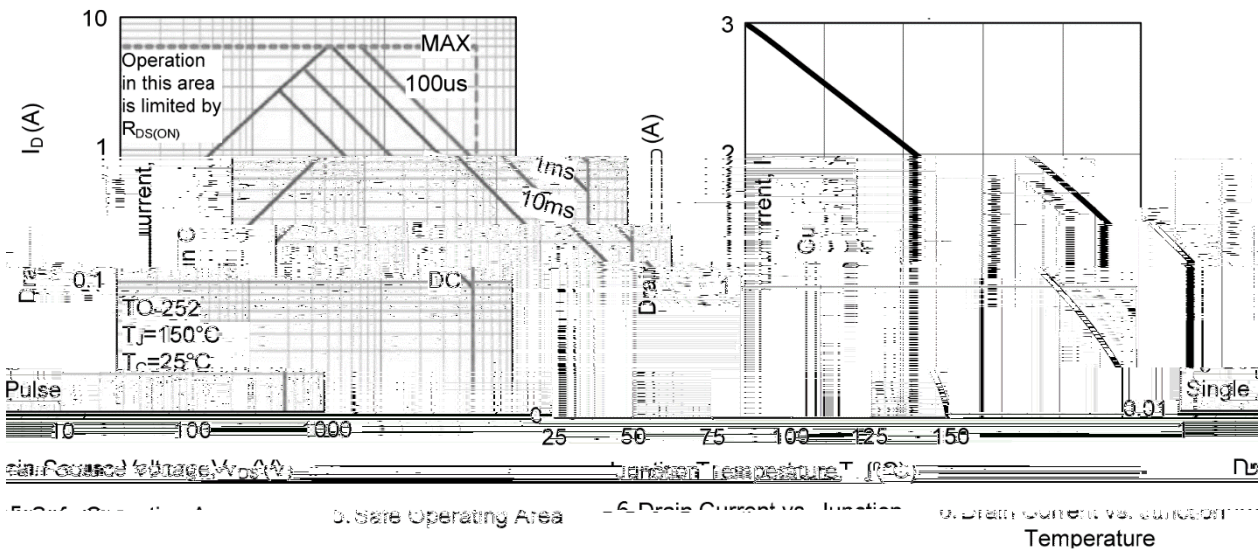
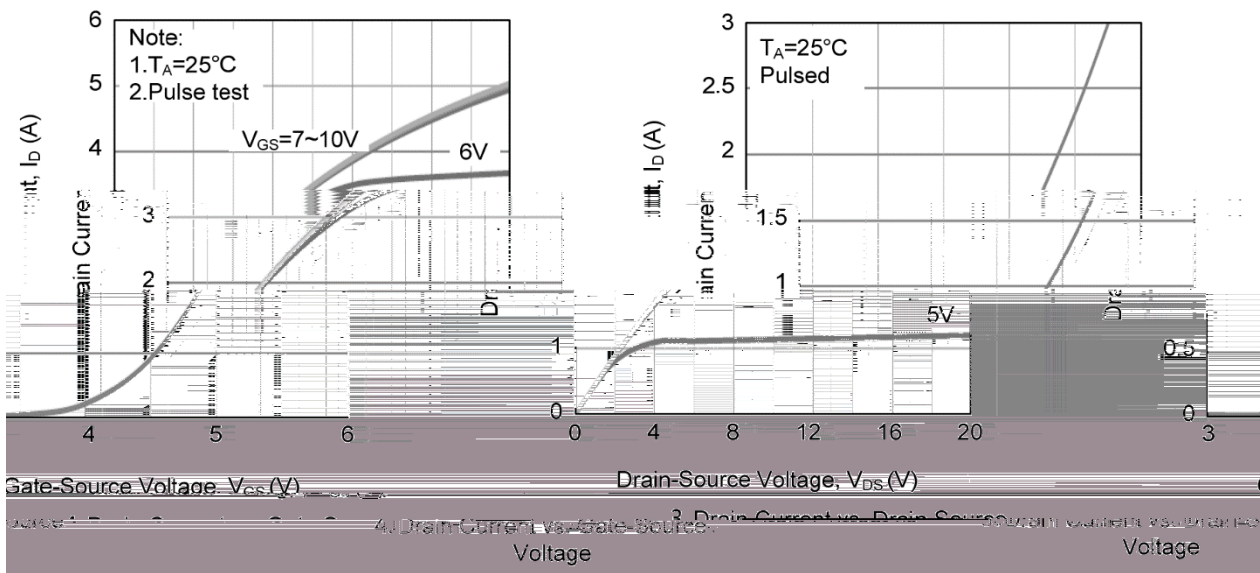
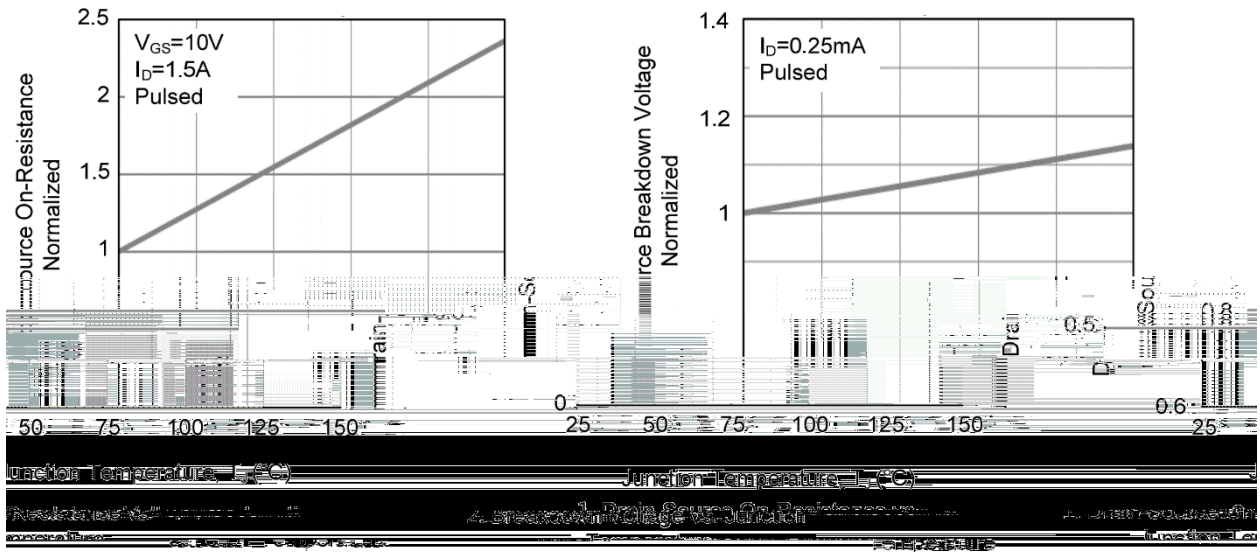
/ Marking



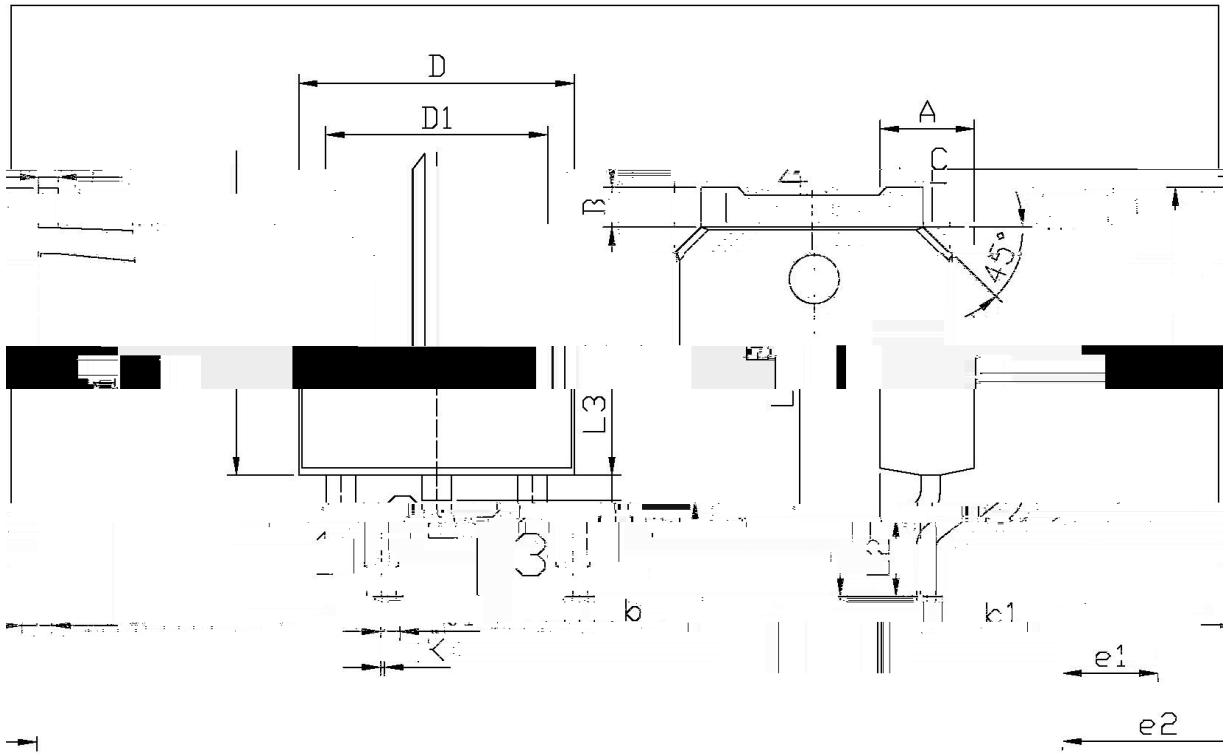
/ Electrical Characteristics(Ta=25 )

		$\mu$				

/ Electrical Characteristic Curve



/ Package Dimensions



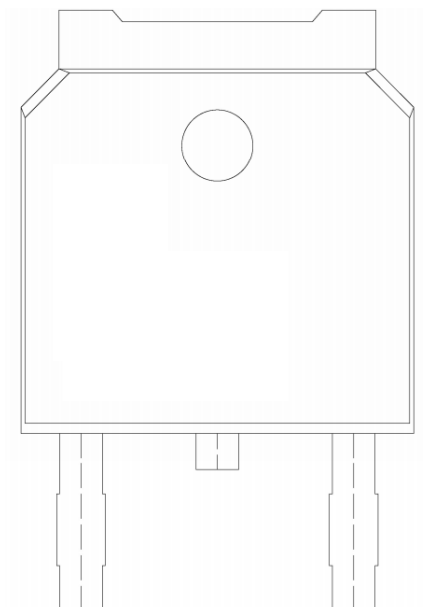
单位: mm

Symbol	Dimensions In Millimeters		Symbol	Dimensions In Millimeters	
	Min	Max		Min	Max
A	2.20	2.70	B	0.95	1.25
B	0.95	1.25	C	0.40	0.50
C	0.40	0.50	D	6.45	6.75
D	6.45	6.75	D1	5.10	5.50
D1	5.10	5.50	L3	0.60	0.90
L3	0.60	0.90	b	0.85	1.05
b	0.85	1.05	k1	0.45	0.55
k1	0.45	0.55	e1	1.20	1.50
e1	1.20	1.50	e2	2.50	2.50
e2	2.50	2.50			

2

T0-25

/ Marking Instructions



3N 50F

\*\*\*\*

( ) / Temperature Profile for IR Reflow Soldering(Pb-Free)


± ± ± ±

/ Resistance to Soldering Heat Test Conditions

± ±

/ Packaging SPEC.

--	--	--	--	--	--	--	--	--	--