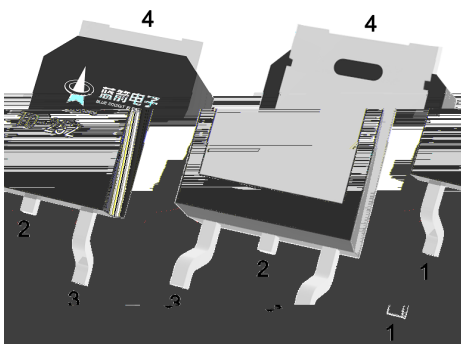
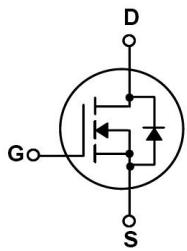


Ω Ω



/ Marking

/ Absolute Maximum Ratings(Ta=25)

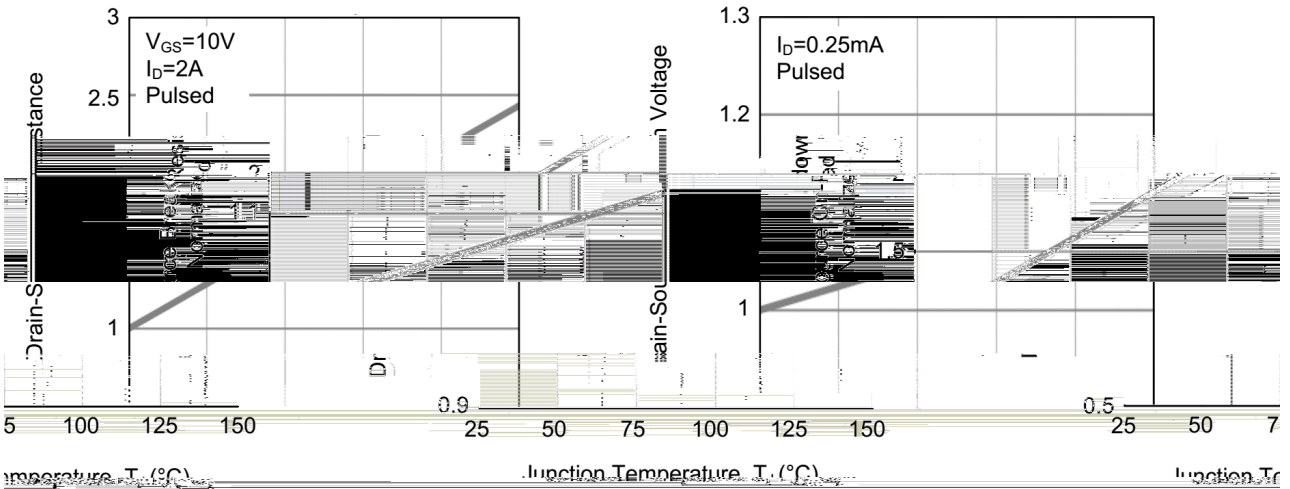
/ Electrical Characteristics(Ta=25)

			μ			
						μ
			μ			
						Ω

/ Electrical Characteristics(Ta=25)

		Ω				
		μ				

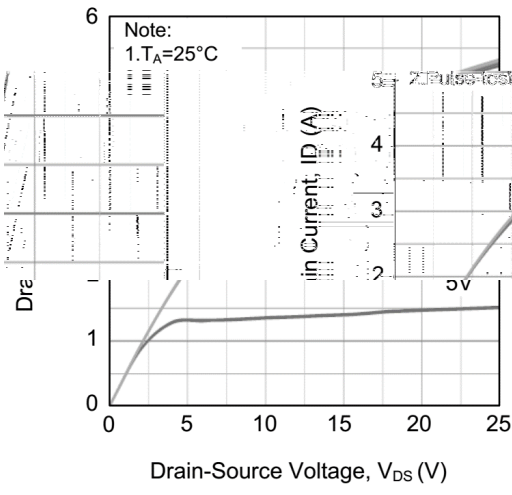
/ Electrical Characteristic Curve



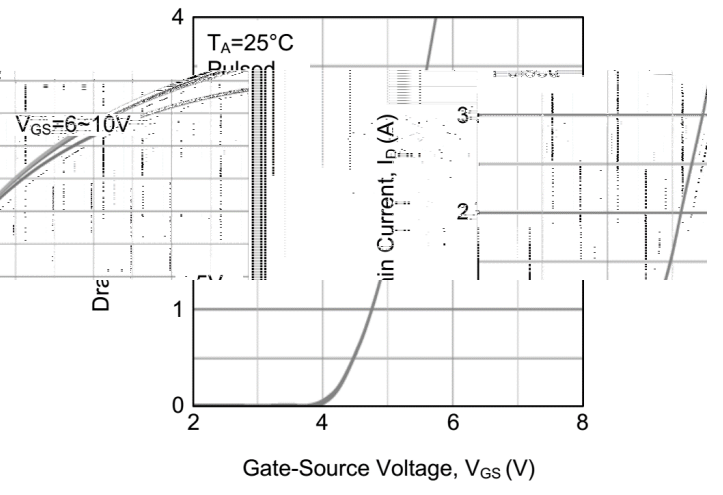
1. Drain-Source On-Resistance vs. Junction Temperature

2. Breakdown Voltage vs. Junction Temperature

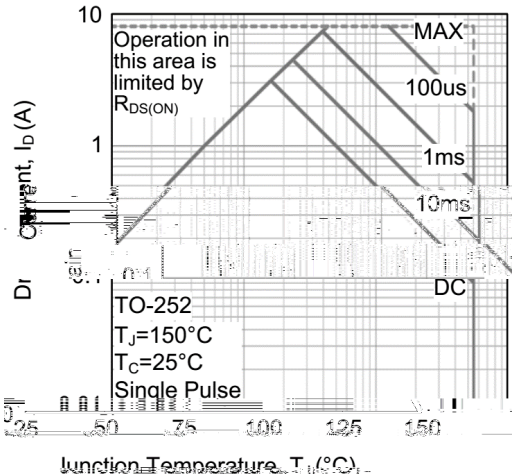
1. Drain-Source On-Resistance vs. Junction Temperature



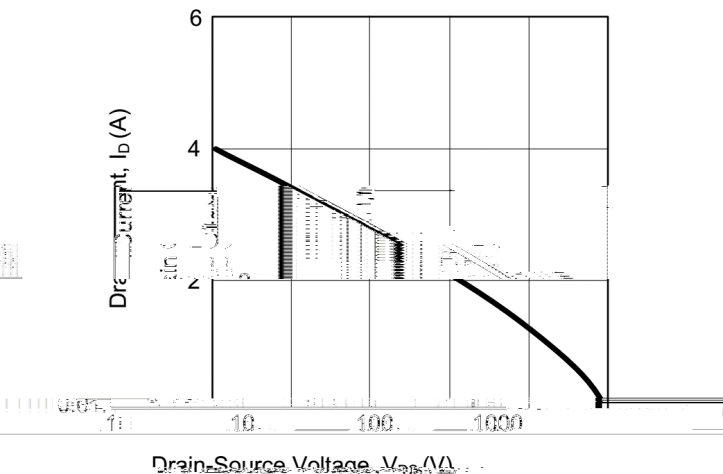
3. Drain Current vs. Drain-Source Voltage



4. Drain Current vs. Gate-Source Voltage

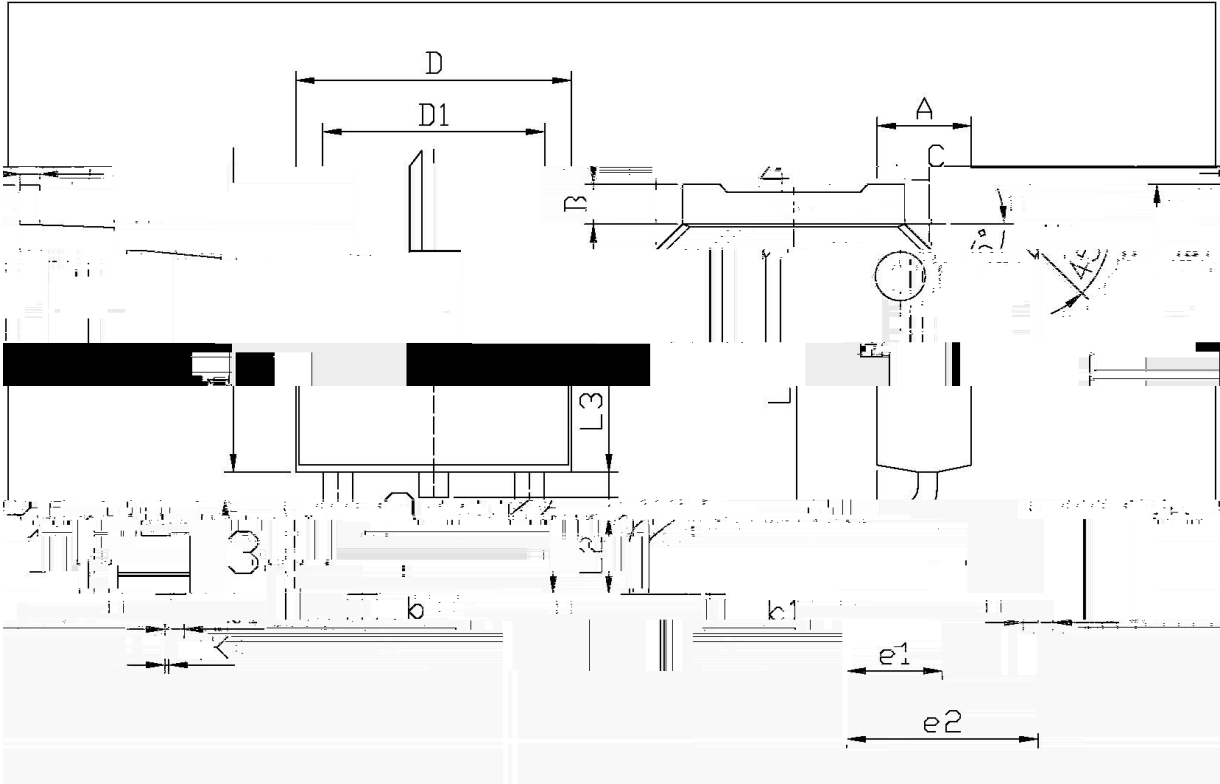


6. Drain Current vs. Junction Temperature



5. Safe Operating Area

/ Package Dimensions

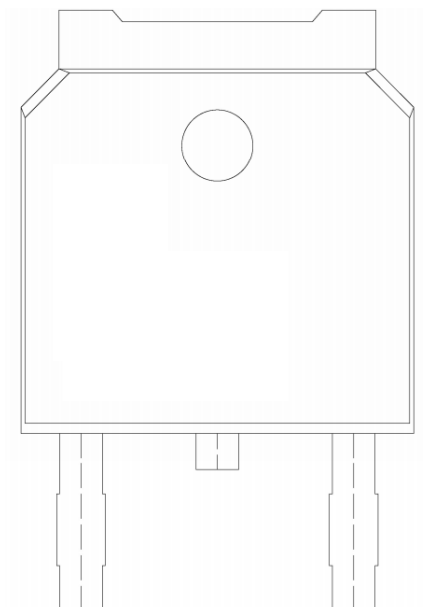


单位: mm

Symbol	Dimensions In Millimeters		Symbol	Dimensions In Millimeters	
	Min.	Max.		Min.	Max.
D	5.95	6.25	A	2.20	2.40
D1	2.24	2.34	B	0.95	1.25
A	4.73	5.00	C	0.70	0.90
L3	9.85	10.35	b1	0.45	0.70
b	4.5	5.05	L2	2.00	2.50
e1	6.75	7.10	e2	6.4	6.75

T0-252

/ Marking Instructions



() / Temperature Profile for IR Reflow Soldering(Pb-Free)

/ Resistance to Soldering Heat Test Conditions

/ Packaging SPEC.

封装形式	包装数量					包装尺寸	
	只卷盘	卷盘盒	只盒	盒箱	只箱	盒	箱