

BRES24V0M2B3MA

极限参数 / Absolute Maximum Ratings(Ta=25°C)

Parameter	Symbol	Rating	Unit
Peak Pulse Power (tp = 8/20μs)	P _{PP}	350	W
Peak Pulse Current (tp = 8/20μs)	I _{PP}	8.0	A
ESD per IEC 61000-4-2 (Air)	V _{ESD1}	±30	kV
ESD per IEC 61000-4-2 (Contact)	V _{ESD2}	±30	kV
Operating Temperature	T _{OPR}	-55 to +150	
Storage Temperature	T _{STG}	-55 to +150	

电性能参数 / Electrical Characteristics(Ta=25°C)

Parameter	Symbol	Test Conditions	Min	Typ	Max	Unit
Reverse Stand-Off Voltage	V _{RWM}				24	V
Reverse Breakdown Voltage	V _{BR}	I _t =1mA	26.7			V
Reverse Leakage Current	I _R	V _{RWM} =24V T=25			1	μA
Clamping Voltage	V _C	I _{PP} =1.0A t _p =8/20μS			33	V
	V _C	I _{PP} =8.0A t _p =8/20μS			44	V
Capacitance. Any I/O pin to GND	C _J	V _R =0V f=1MHz		25	30	pF

电参数曲线图 / Electrical Characteristic Curve

Fig.1 Non-Repetitive Pulse Power vs.Pulse Time

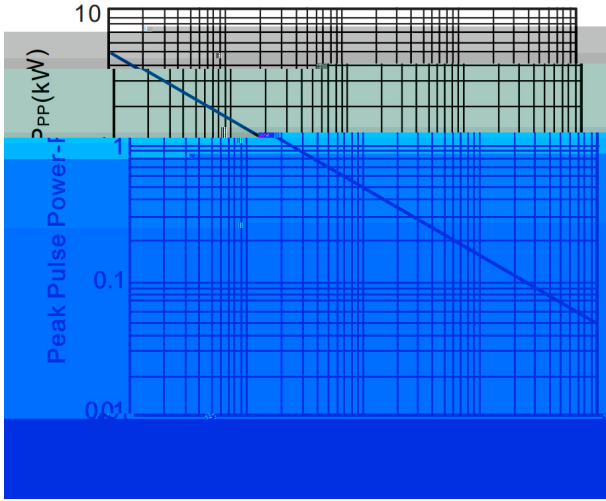
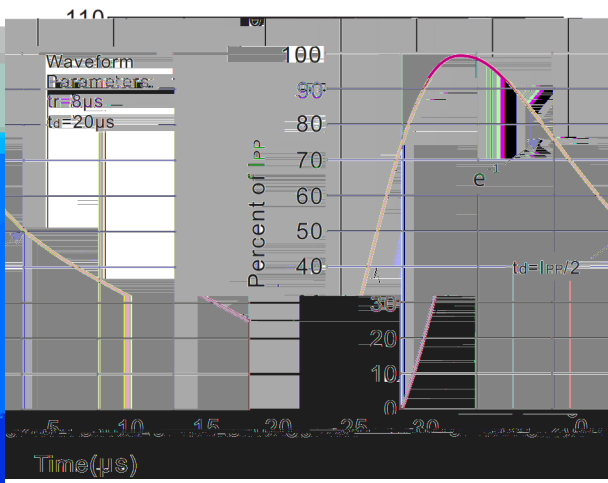


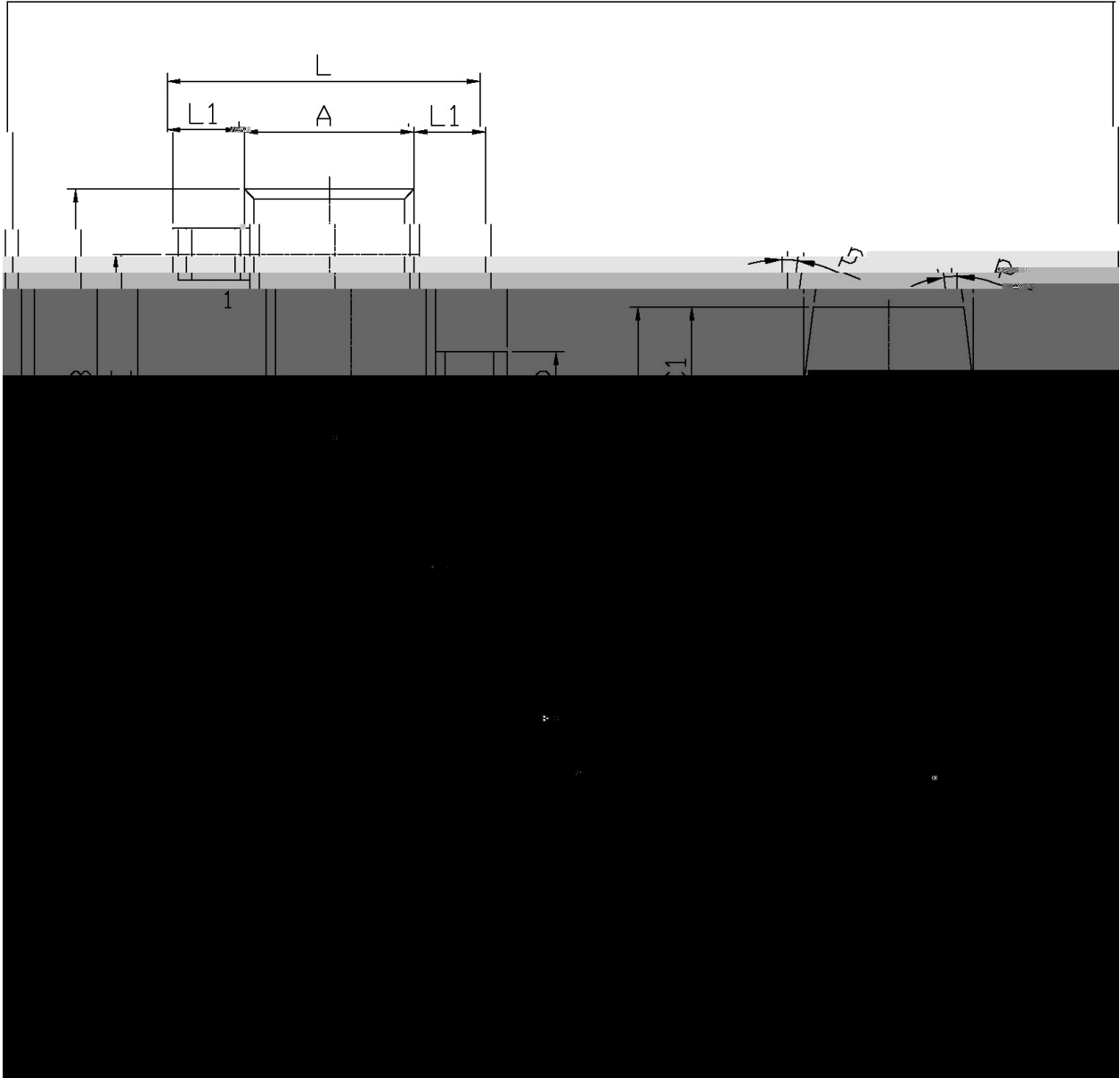
Fig.2 Pulse Waveform



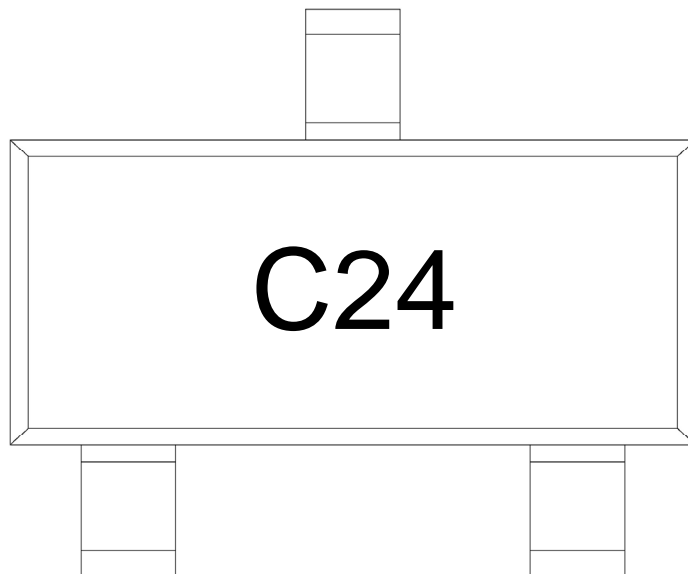
外形尺寸图 / Package Dimensions

SOT-23

单位: mm



印章说明 / Marking Instructions

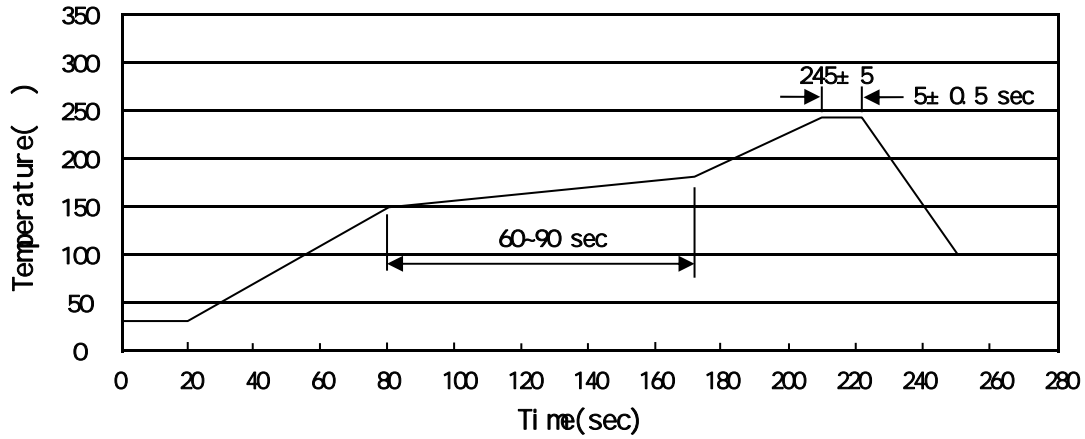


C24

Note:

C24: Product Type Code

回流焊温度曲线图(无铅) / Temperature Profile for IR Reflow Soldering(Pb-Free)



Note:

- | | | | | | |
|---|-------|-----|----|-----------|---|
| 1 | 150 | 180 | 60 | 90sec; | 1.Preheating:150~180 , Time:60~90sec. |
| 2 | 245±5 | | | 5±0.5sec; | 2.Peak Temp.:245±5 , Duration:5±0.5sec. |
| 3 | | | 2 | 10 /sec. | 3. Cooling Speed: 2~10 /sec. |

耐焊接热试验条件 / Resistance to Soldering Heat Test Conditions

260±5 10±1 sec. Temp.:260±5 Time:10±1 sec

包装规格 / Packaging SPEC.

/ REEL

Package Type	Units					Dimension (unit mm ³)		
	Units/Reel	Reels/Inner Box	Units/Inner Box	Inner Boxes/Outer Box	Units/Outer Box	Reel	Inner Box	Outer Box
SOT-23	3,000	10	30,000	6	180,000	7 x8	180x120x180	390x385x205

使用说明 / Notices