





## / Descriptions

Low Capacitance TVS Array in a SOT23-6 Plastic Package.

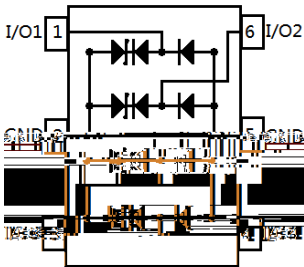
## / Features

4 ESD protection structures, low capacitance for high-speed interfaces, Capacitance I / O channel is not more than 0.35pF, Low clamping voltage, Low operating voltage, suitable for high speed data transmission lines. HF Product.

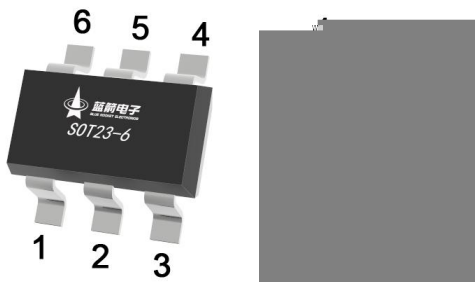
## / Applications

ESD protection for high-speed data lines, such as USB 2.0, set-top boxes, monitors and so on. According to IEC 61000-4-2 (ESD) Standard:  $\pm 30\text{kV}$  (air discharge),  $\pm 20\text{kV}$  (contact discharge).

## / Equivalent Circuit



## / Pinning



## / Marking

See Marking Instructions.

# BRES5V0X4C6MF

Rev.A Jun.-2022



DATA SHEET

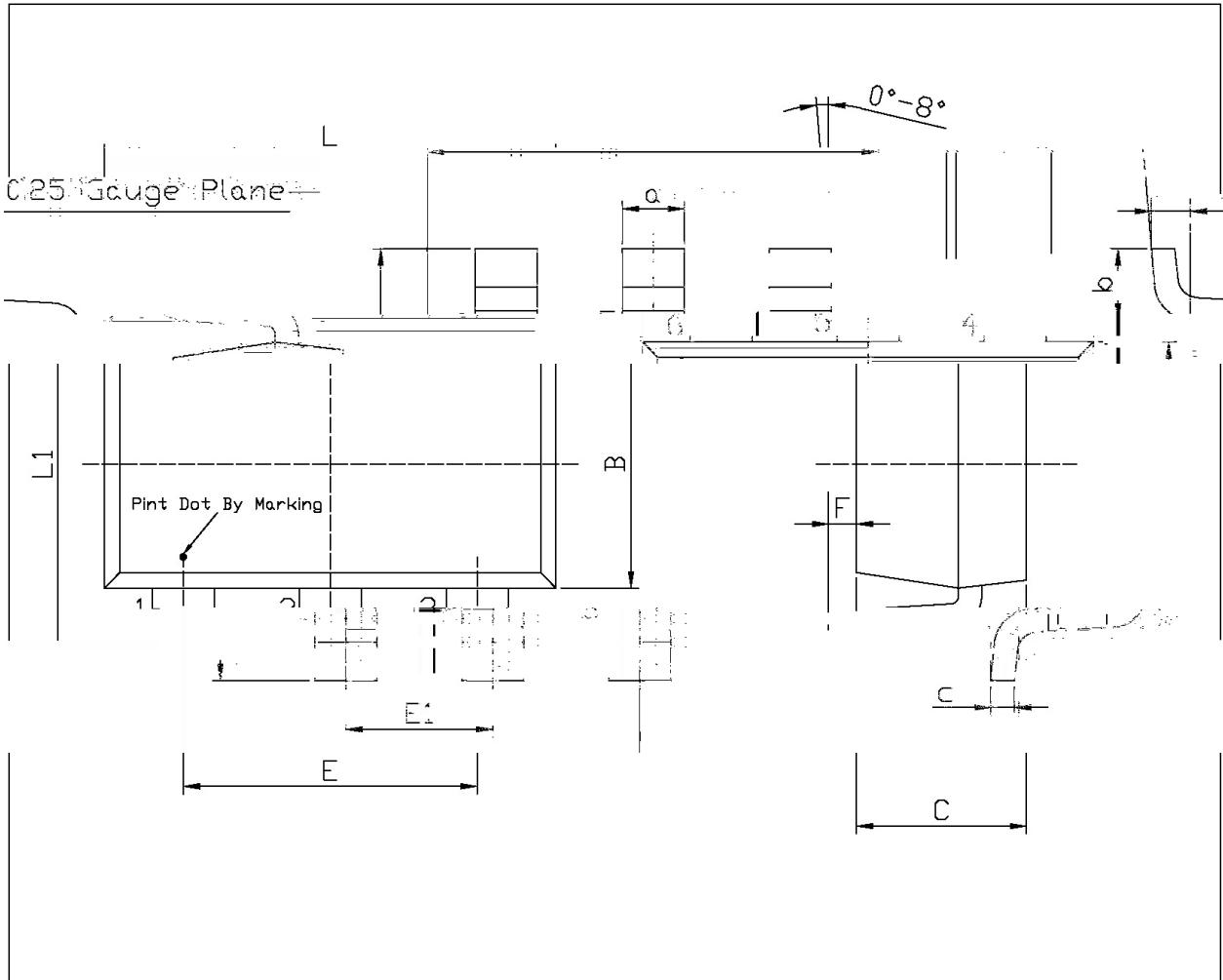
Parameter	Symbol	Rating	Unit
Peak Pulse Power (tp = 8/20μs)	P <sub>PP</sub>	56	W
Peak Pulse Current (tp = 8/20μs)	I <sub>PP</sub>	4.0	A

ESD per IEC 61000-4-R





/ Package Dimensions



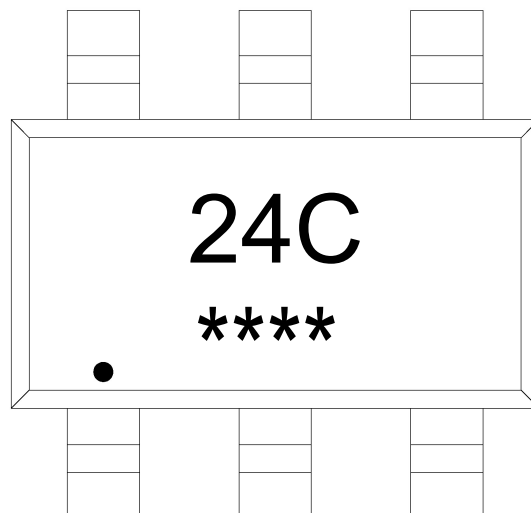
Unit: mm

Dimension		Dimension in Millimeters		Dimension		Dimension in Millimeters	
Symbol	Min	Max	Symbol	Min	Max	Symbol	Min
E1	0.85	1.05	L	2.60	3.00	L	2.60
a	0.35	0.50	B	1.50		B	1.50
C	0.90	1.30	c	0.10	0.20		
L1	2.60	3.00	b	0.35	0.55		
E	1.80	2.00	F	0	0.15		

SOT23-6



**/ Marking Instructions**



说明：

24C： 为型号代码

\*\*\*\*： 为生产批号代码，随生产批号变化

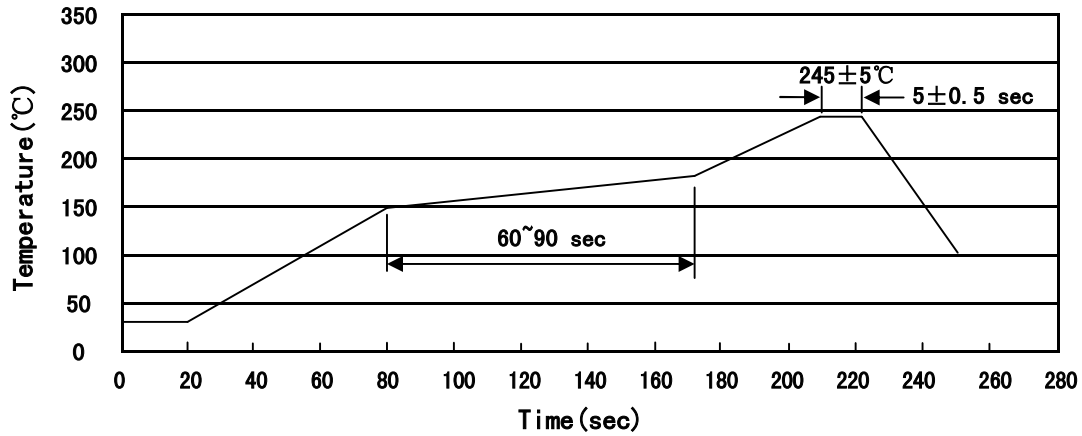
Note:

24C: Product Type Code

\*\*\*\*: Lot No. Code, code change with Lot No



( ) / Temperature Profile for IR Reflow Soldering(Pb-Free)



Note:

- |   |       |     |           |        |  |
|---|-------|-----|-----------|--------|--|
| 1 | 150   | 180 | 60        | 90sec; | 1.Preheating:150~180°C, Time:60~90sec.   |
| 2 | 245±5 |     | 5±0.5sec; |        | 2.Peak Temp.:245±5°C, Duration:5±0.5sec. |
| 3 |       | 2   | 10°C/sec. |        | 3. Cooling Speed: 2~10°C/sec.            |

/ Resistance to Soldering Heat Test Conditions

260±5°C                      10±1 sec.                      Temp.:260±5°C                      Time:10±1 sec

/ Packaging SPEC.

/ REEL

Package Type 封装形式	Units 包装数量					Dimension 包装尺寸 (unit: mm <sup>3</sup> )		
	Units/Reel 只/卷盘	Reels/Inner Box 卷盘/盒	Units/Inner Box 只/盒	Inner Boxes/Outer Box 盒/箱	Units/Outer Box 只/箱	Reel	Inner Box 盒	Outer Box 箱
SOT23-5/6	3,000	10	30,000	4	120,000	7" ×8	210×205×205	445×230×435

/ Notices