

图 1. 典型固定输出电压

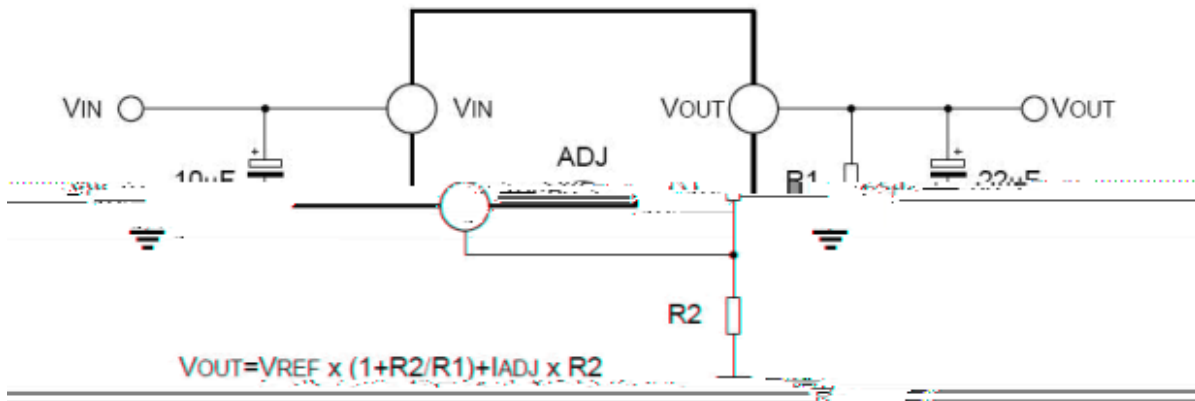
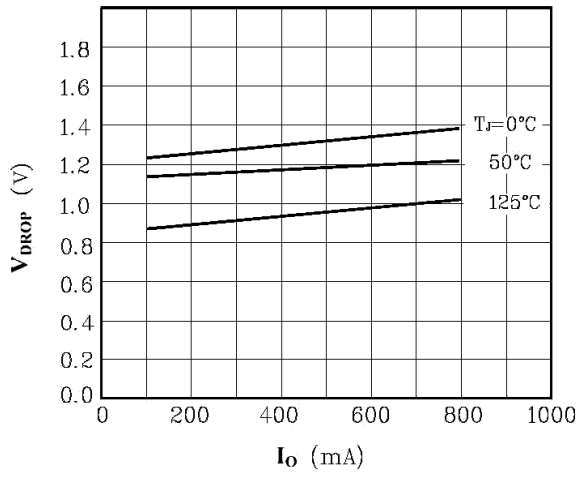
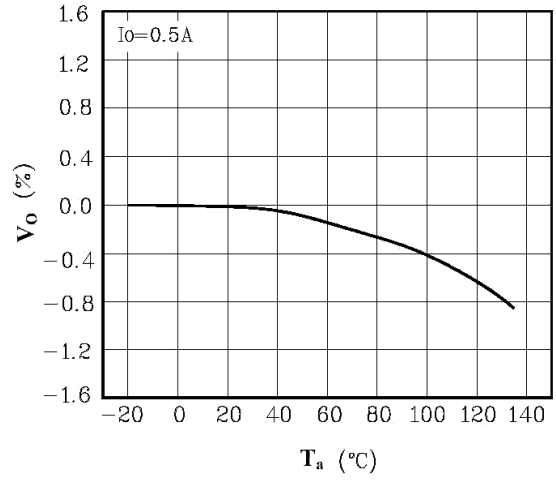


图 2. 典型可调输出电压

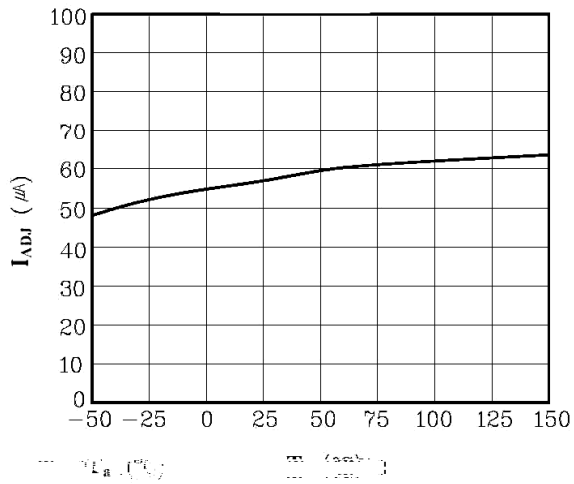
$V_{DROP} - I_O$



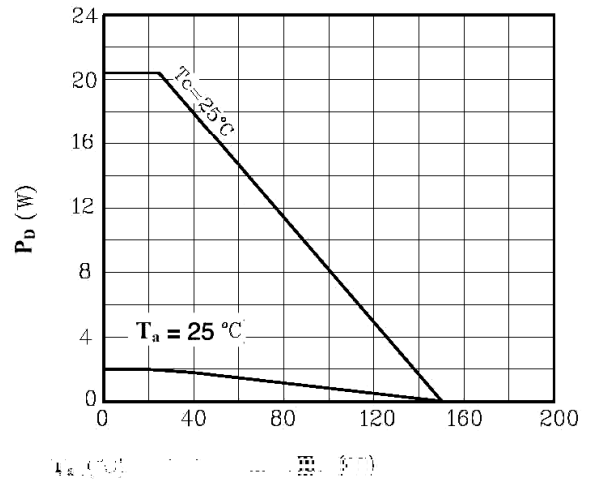
$V_O - T_a$



$I_{ADJ} - T_a$

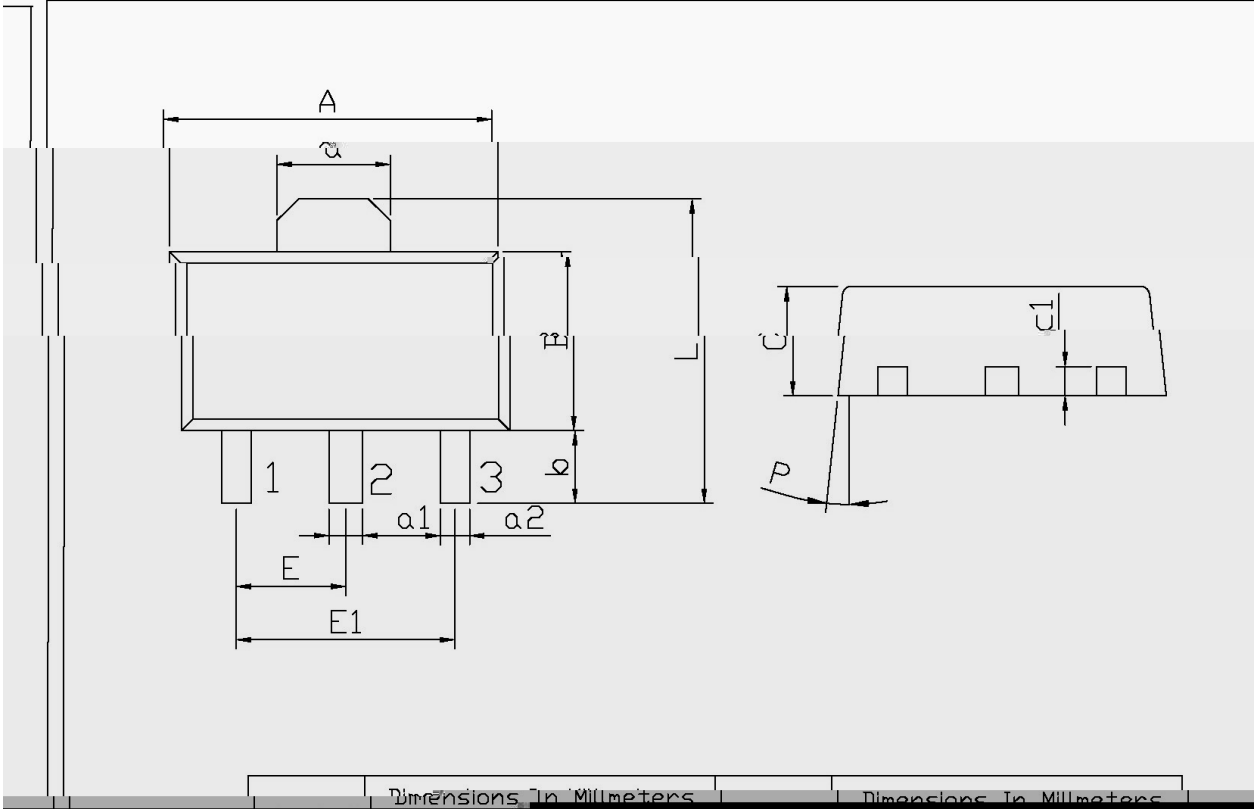


$P_D - T_a$



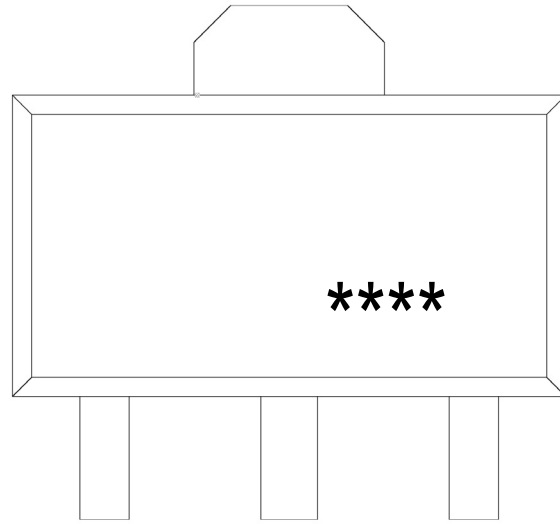
ST1-89

单位: mm



Dimensions In Millimeters

Dimensions In Millimeters



BR
1117

33: 3.3V
