

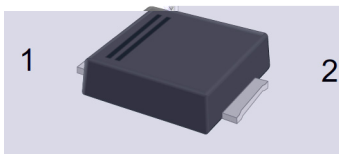
Rev.C May.-2019

60V 5.0A SMBF

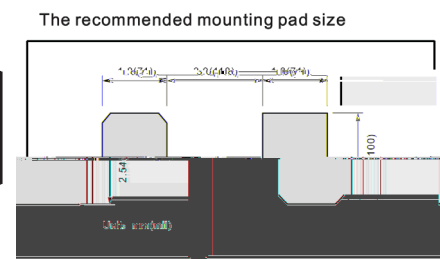
Surface Mount Schottky Barrier Rectifier, Reverse Voltage:60V,Forward Current:5.0A,SMBF thin package.

Low power loss, high efficiency, High forward surge current capability, For use in low voltage, high frequency inverters, and polarity protection applications,For surface mounted applications.Halogen free product.

General purpose.



| PIN | DESCRIPTION |
|-----|-------------|
| 1 | Cathode |
| 2 | Anode |

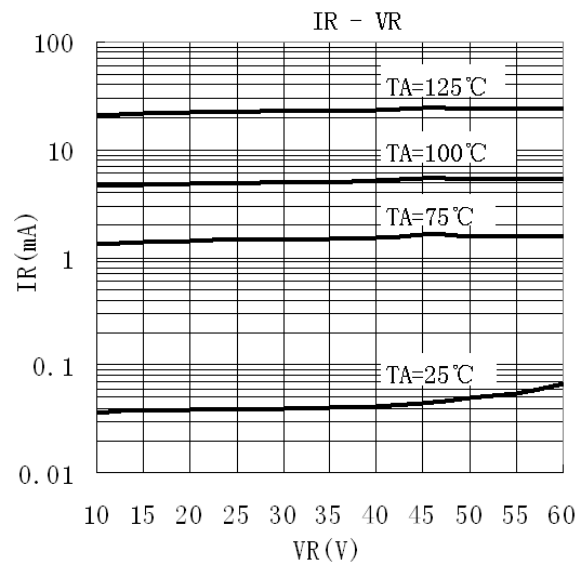
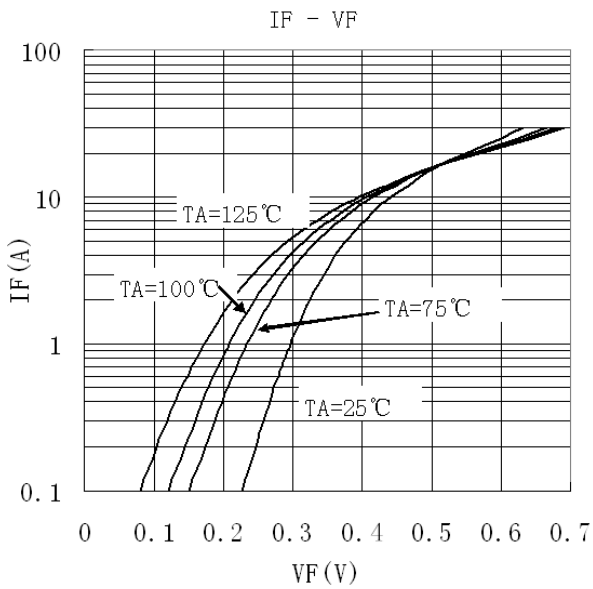
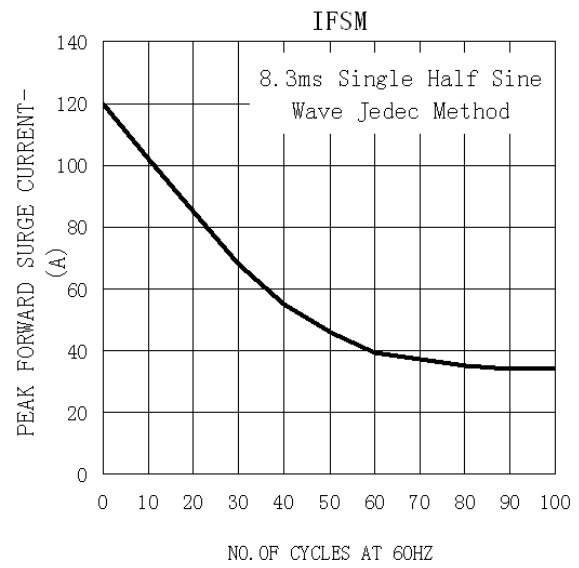
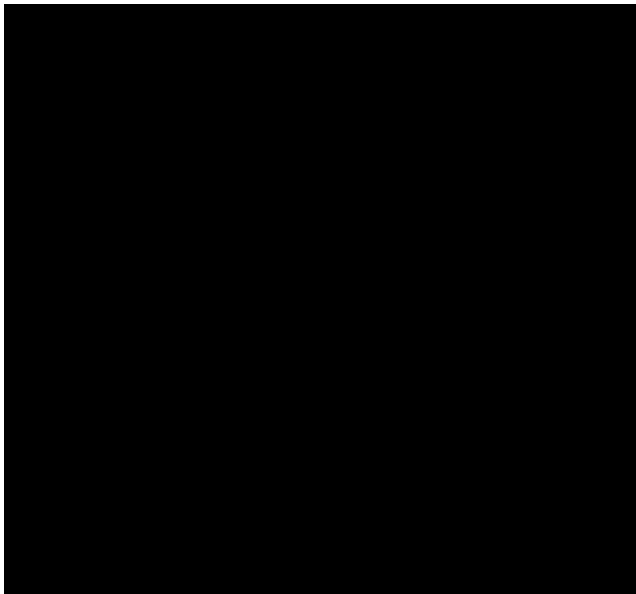


| Type number | Marking code |
|-------------|--------------|
| BRLV5T60BF | 5T60 |

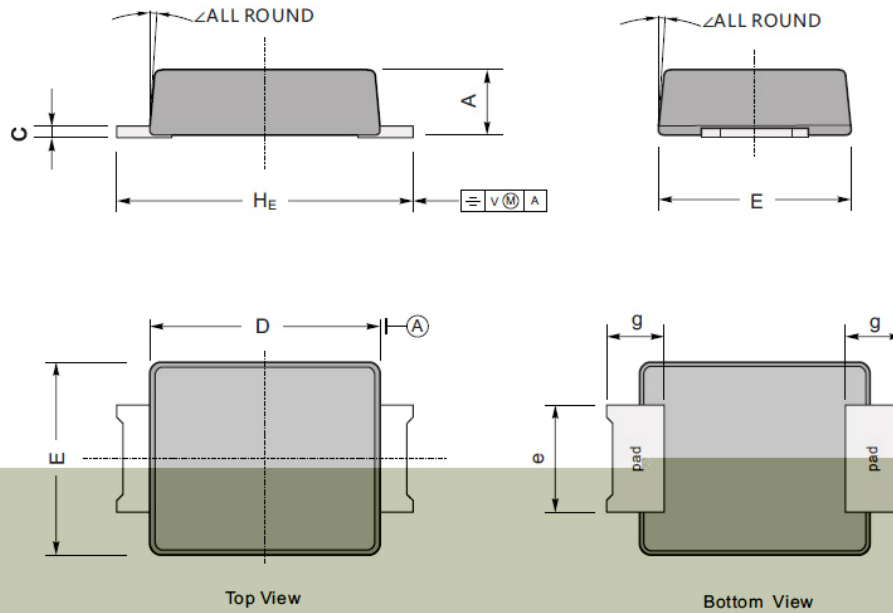
Notes:

- 1 Mounted at 1MHz and applied reverse voltage of 4V D.C.
- 2 Mounted on a FR4 PCB, single-sided copper, with 100cm² copper pad area.

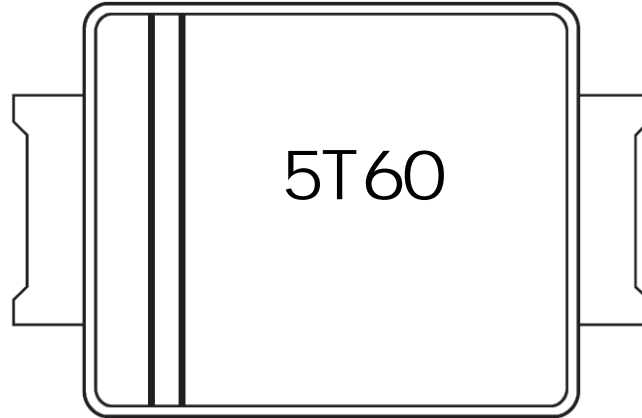
| Parameter | Symbol | Test condition | Rating | | | Unit |
|-----------|--------|----------------|--------|------|------|------|
| | | | MIN. | TYP. | MAX. | |
| | | | | | | |



SMRFF



| UNIT | | A | C | D | E | H_E | e | g | \angle |
|------|-----|-----|------|-----|------|-------|------|-----|----------|
| mm | max | 1.3 | 0.26 | 4.4 | 37.7 | 55.0 | 22.2 | | 9° |
| | min | 1.1 | 0.18 | 4.2 | 3.5 | 5.1 | 1.9 | 1.0 | |
| mil | max | 51 | 10 | 173 | 146 | 216 | 86 | 40 | |
| | min | 43 | 7 | 165 | 138 | 200 | 75 | | |



5T60

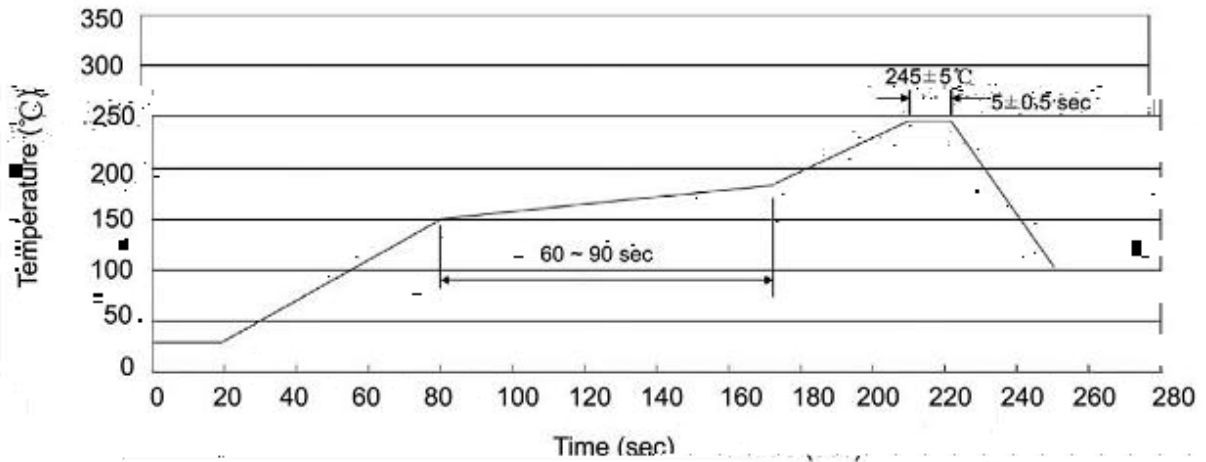
1 *

3 *

Note:

5T60 Product Type Code

**** Lot No. Code The 1st * means:YM Code The last 3 * means:little Lot No
Code



- | | | | | | | |
|---|-------|-----|----|-----------|-------|---|
| 1 | 150 | 180 | 60 | 90sec; | Note: | 1.Preheating:150~180 , Time:60~90sec. |
| 2 | 245±5 | | | 5±0.5sec; | | 2.Peak Temp.:245±5 , Duration:5±0.5sec. |
| 3 | | 2 | 10 | /sec. | | 3. Cooling Speed: 2~10 /sec. |

 260 ± 5
 $10 \pm 1 \text{ sec.}$

 Temp.: 260 ± 5

 Time: $10 \pm 1 \text{ sec}$

/ REEL

| Package Type 封装形式 | Units 包装数量 | | | | | Dimension 包装尺寸 (unit: mm ³) | | |
|----------------------|--------------------|-------------------------|------------------------|------------------------------|------------------------|---|-------------|-------------|
| | Units/Reel 只/卷盘 | Reels/Inner Box 卷盘/盒 | Units/Inner Box 只/盒 | Inner Boxes/Outer Box 盒/箱 | Units/Outer Box 只/箱 | Reel | Inner Box 盒 | Outer Box 箱 |
| SMBF | 5000 | 2 | 10000 | 5 | 50000 | 13 x15 | 336X332X40 | 380X335X366 |