

BRMBR30150CTRA

Rev. A Jul.-2018

/ Descriptions

TO-220

Schottky Barrier Diode in a TO-220 Plastic Package.

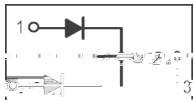
/ Features

Low power loss, high efficiency.

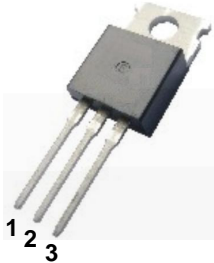
/ Applications

For use in low voltage,high frequency inverters, free wheeling, and polarity protection applications.

/ Equivalent Circuit



/ Pinning



PIN1 Anode PIN 2 Cathode PIN 3 Anode

/ h_{FE} Classifications & Marking

See Marking Instructions.

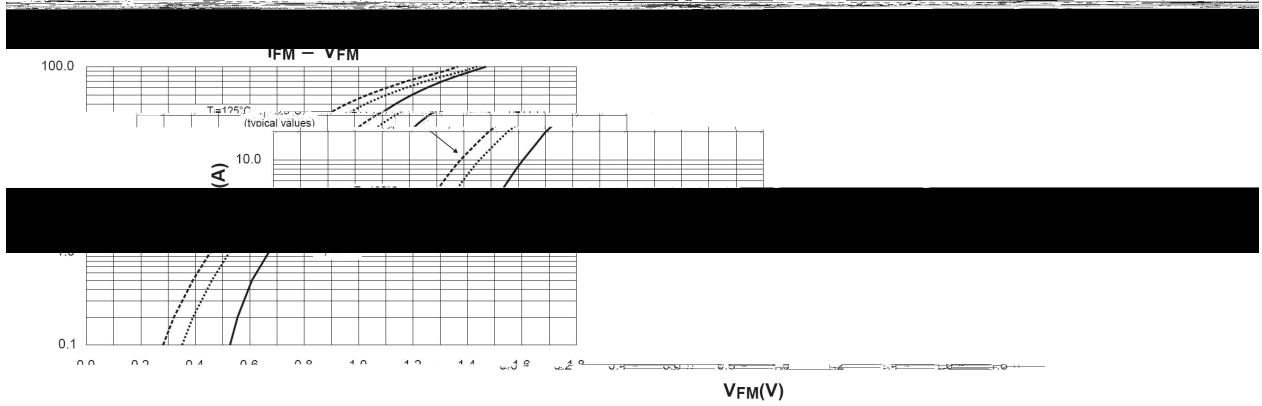
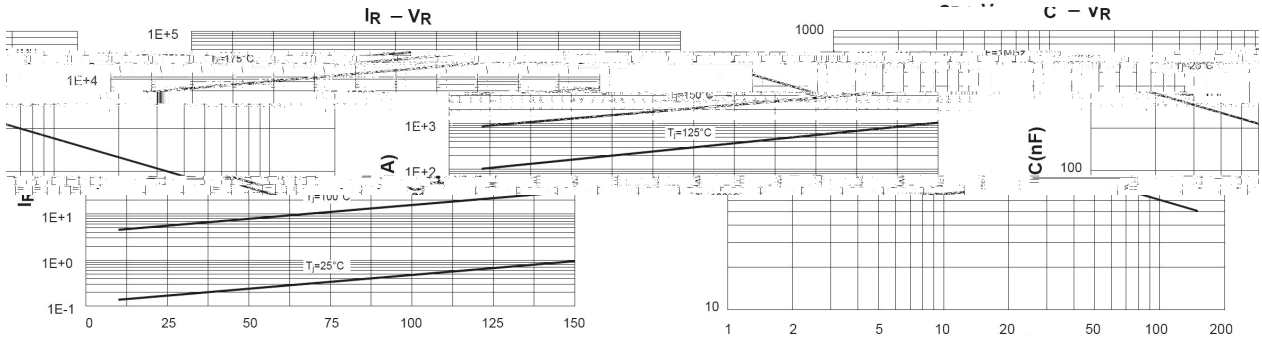
/ Absolute Maximum Ratings($T_a=25$)

Parameter	Symbol	Rating	Unit
Peak Repetitive Reverse Voltage	V_{RRM}	150	V
Average Rectified Forward Current	$I_{F(AV)}$	15	A
	$I_{F(AV) \text{ total}}$	30	A
Non-Repetitive Peak Forward Surge Current	I_{FSM}	200	A
Thermal Resistance Junction to Case	$R_{\theta Jc}$	2.2	$^{\circ}C/W$
Junction Temperature Range	T_j	150	$^{\circ}C$
Storage Temperature Range	T_{stg}	-55 150	$^{\circ}C$

/ Electrical Characteristics($T_a=25$)

Parameter	Symbol	Test Conditions	Min	Typ	Max	Unit
Forward Voltage	V_F	$I_F=15A(T_C=25^{\circ}C)$			0.95	V
		$I_F=15A(T_C=125^{\circ}C)$			0.92	V
		$I_F=30A(T_C=25^{\circ}C)$			1.02	V
		$I_F=30A(T_C=125^{\circ}C)$			0.98	V
Instantaneous Reverse Current	I_R	$V_R=150V(T_C=25^{\circ}C)$			5.0	μA
		$V_R=150V(T_C=125^{\circ}C)$			5.0	mA

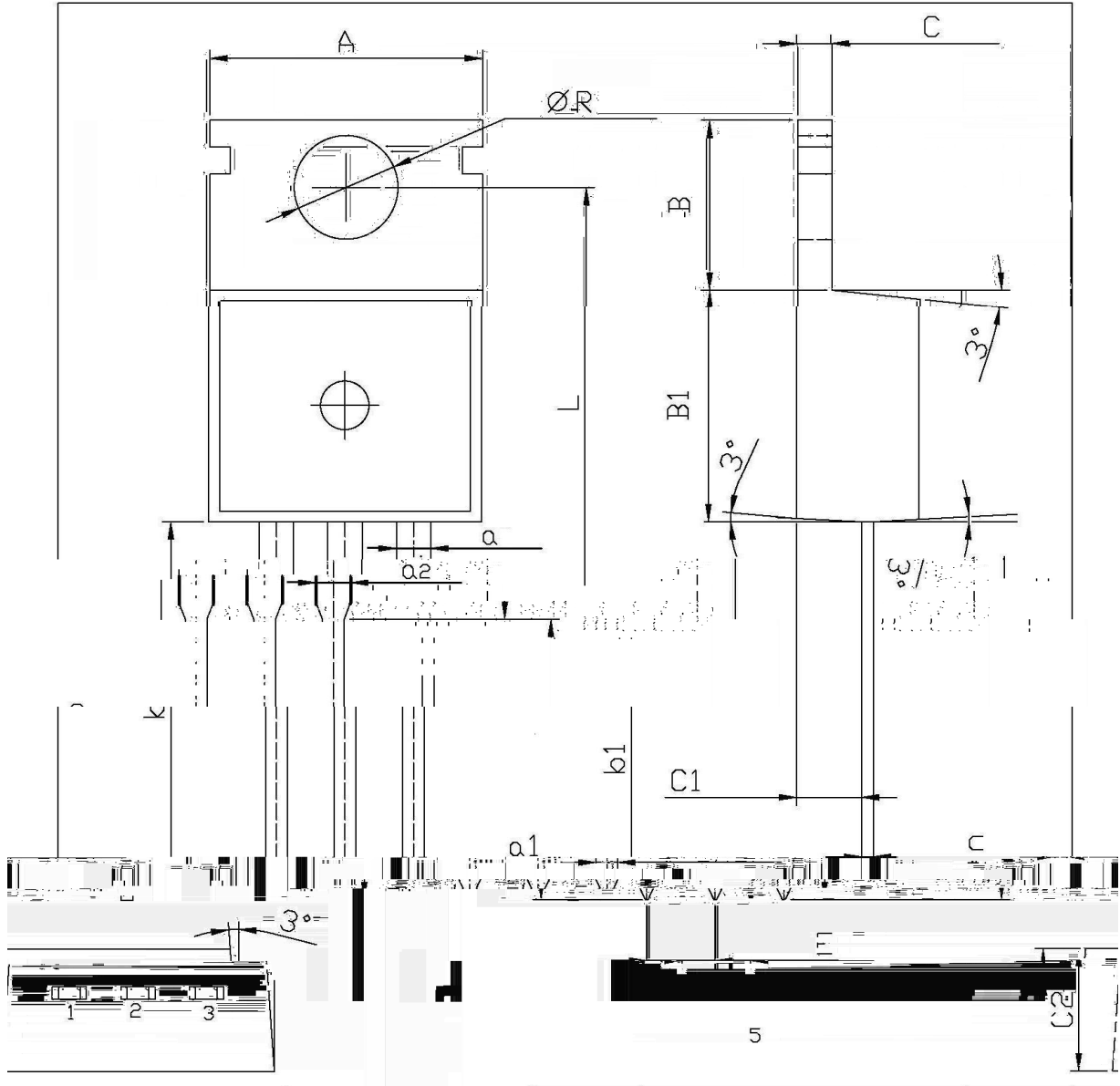
/ Electrical Characteristic Curve



/ Package Dimensions

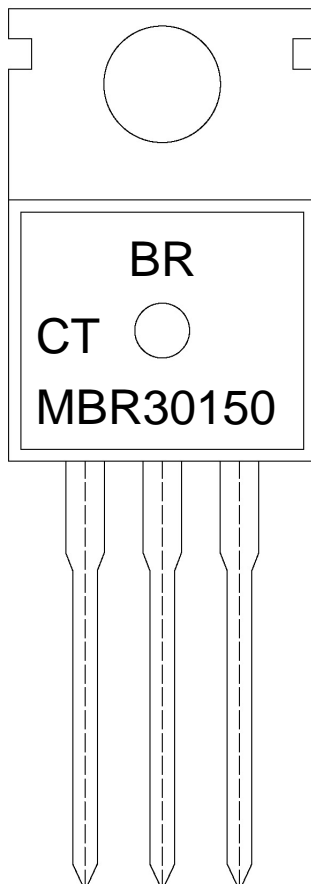
TO-220

单位: mm



Symbol	Min	Max	Symbol	Min	Max
R	3.56	3.64	B	6.3	6.7
L	15.7	16.1	$B1$	9.0	9.4
b	12.6	13.6	$C1$	2.2	2.6
a	0.6	0.7	c	0.4	0.7
$a1$	4.7	5.2	$c1$	1.45	1.75
$a2$	0.2	0.25			

/ Marking Instructions



BR

MBR30150

CT:

Note:

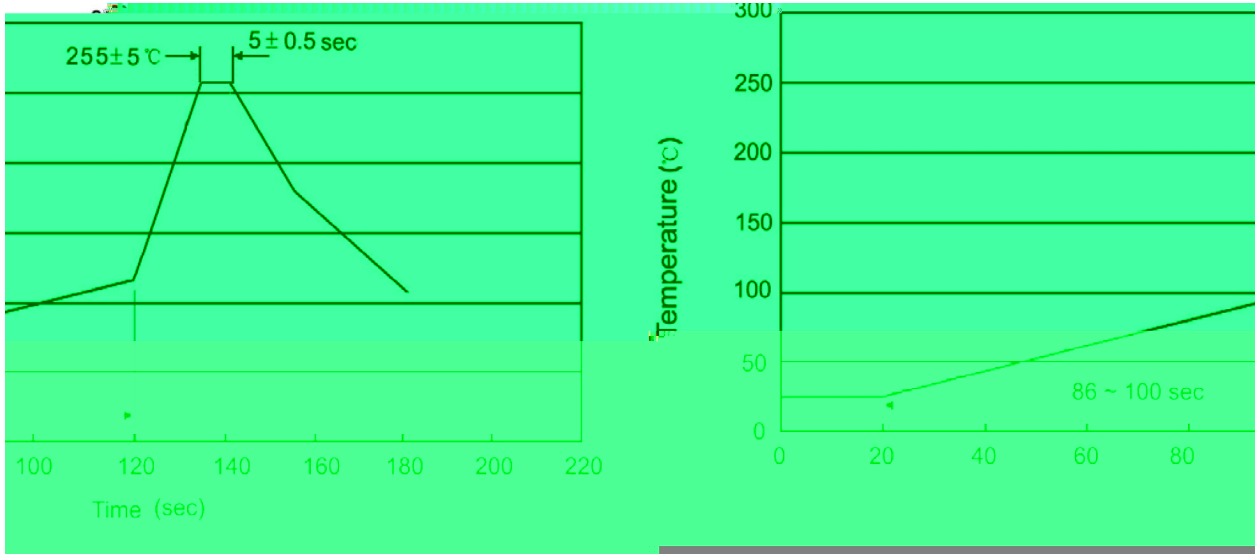
BR: Company Code

MBR30150 Product Type.

CT: Internal Structure

****: Lot No. Code, code change with Lot No.

() / Temperature Profile for Dip Soldering(Pb-Free)



Note:

- | | | | | | |
|---|-------|-----|-----------|--------|---|
| 1 | 25 | 150 | 60 | 90sec; | 1.Preheating:25~150 , Time:60~90sec. |
| 2 | 255±5 | | 5±0.5sec; | | 2.Peak Temp.:255±5 , Duration:5±0.5sec. |
| 3 | | 2 | 10 | /sec. | 3. Cooling Speed: 2~10 /sec. |

/ Resistance to Soldering Heat Test Conditions

270 ± 5 $10 \pm 1 \text{ sec.}$ Temp.: $270 \pm 5^\circ\text{C}$ Time: $10 \pm 1 \text{ sec}$

/ Packaging SPEC.

/ BULK

Package Type 封装形式	Units 包装数量					Dimension 包装尺寸 (unit: mm ³)		
	只袋	袋盒	只盒	盒箱	只箱	袋	盒	箱

/ TUBE

Package Type 封装形式	Units 包装数量					Dimension 包装尺寸 (unit: mm ³)		
	只套管	套管盒	只盒	盒箱	只箱	套管	盒	箱

/ Notices