

# BRMJD32CQ

Rev.A Apr.-2024

## / Descriptions

TO-252          PNP          Silicon PNP transistor in a TO-252 Plastic Package.

## / Features

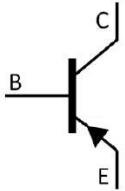
AEC-Q101

Low Speed ,Load Formed for Surface Mount Application, Qualified to AEC-Q101 Standards for High Reliability, HF Product.

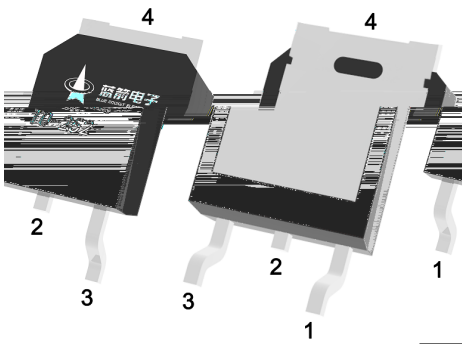
## / Applications

General Purpose Amplifier, Meet the stringent requirements of automotive applications.

## / Equivalent Circuit



## / Pinning



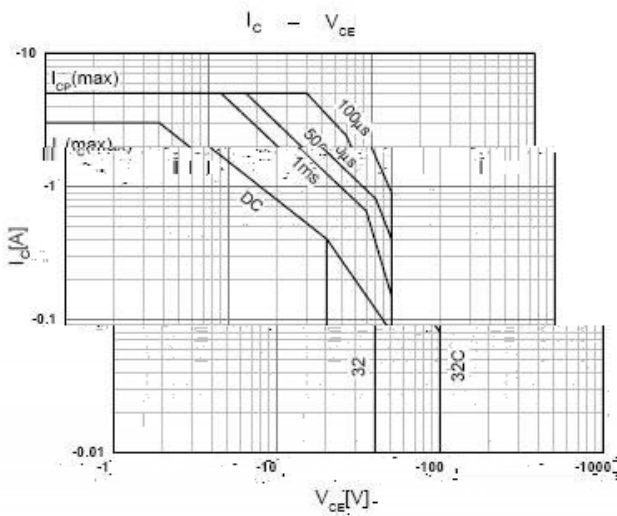
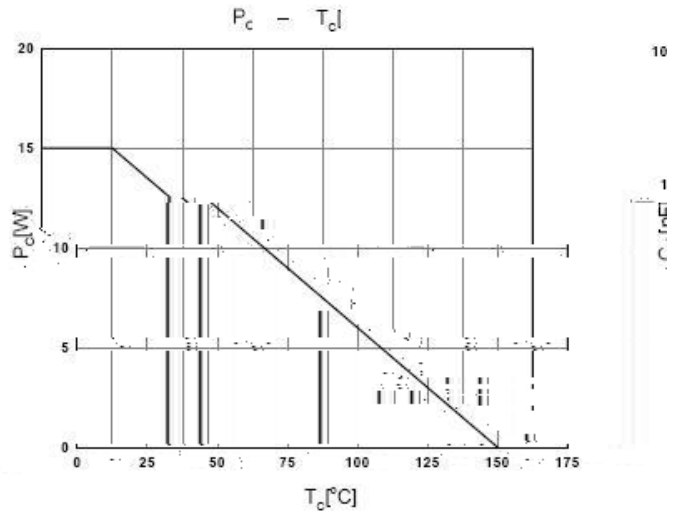
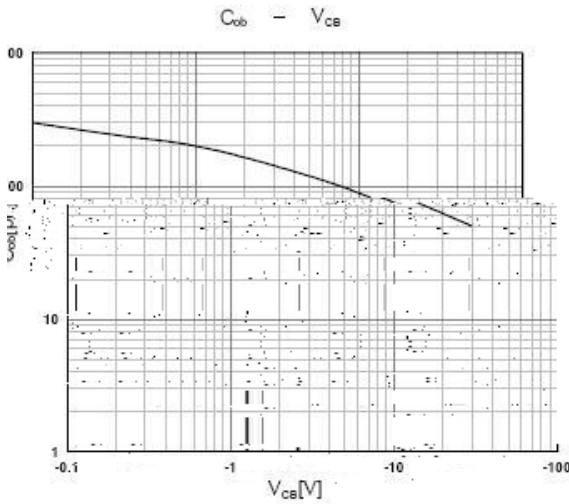
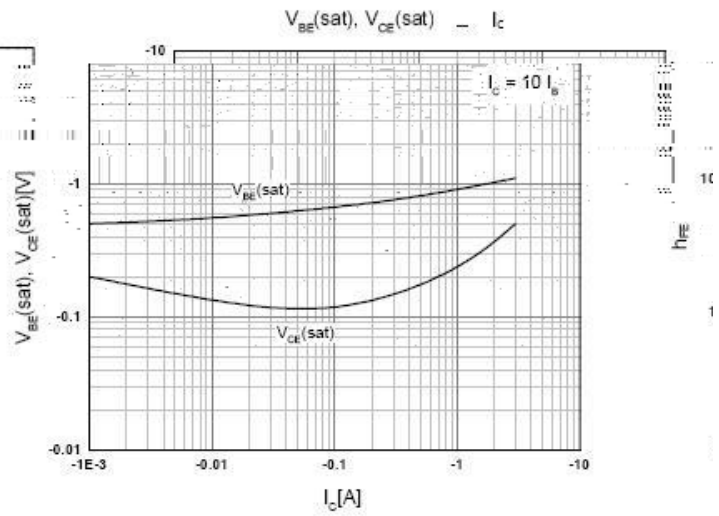
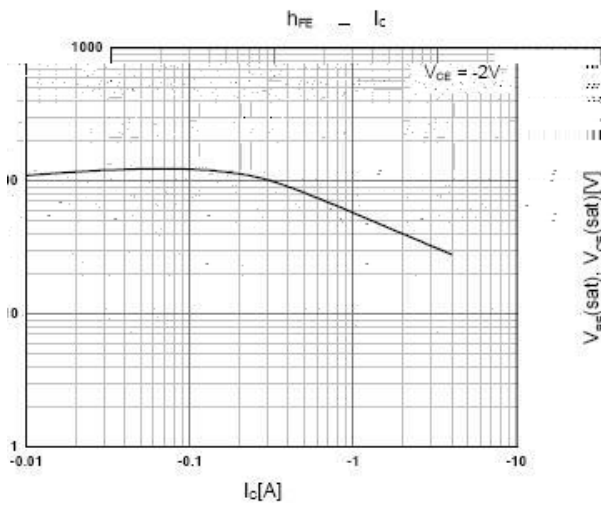
PIN1 Base          PIN 2,4 Collector          PIN 3 Emitter

## / h<sub>FE</sub> Classifications & Marking

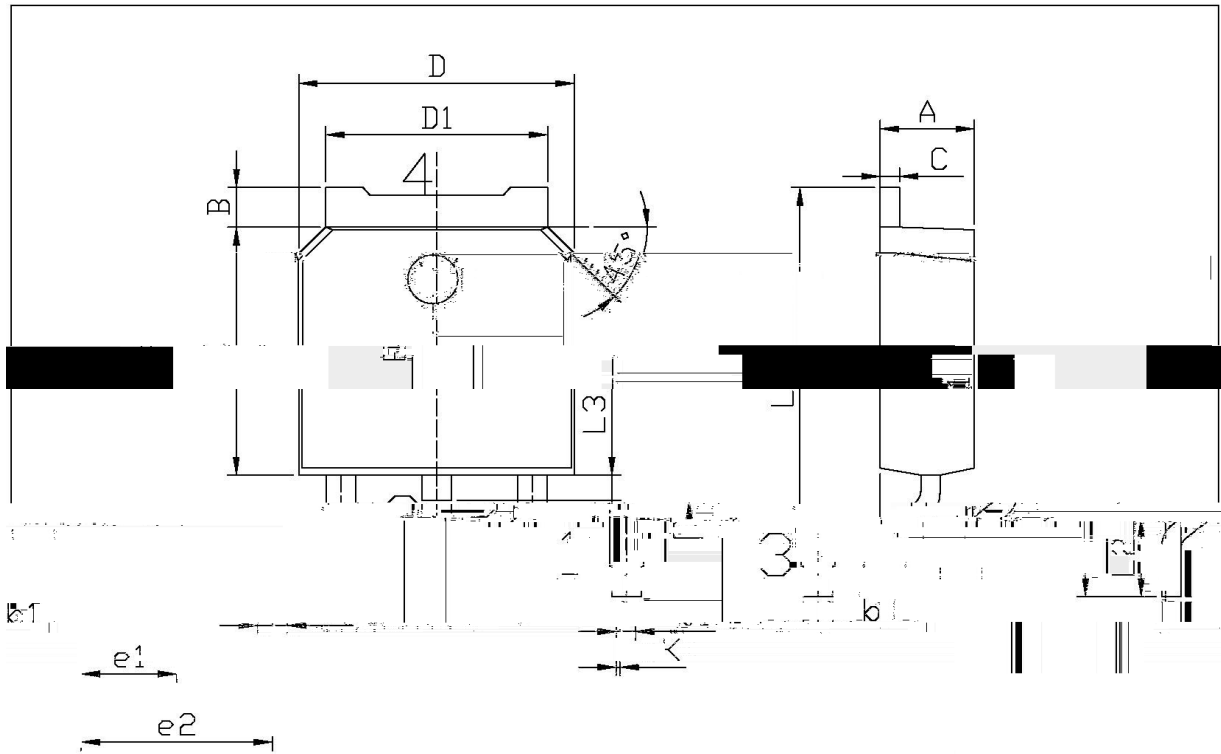
See Marking Instructions.

Parameter	Symbol	Rating	Unit
Collector to Base Voltage	$V_{CBO}$	-100	V
Collector to Emitter Voltage	$V_{CEO}$	-100	V
Emitter to Base Voltage	$V_{EBO}$	-5.0	V

**/ Electrical Characteristic Curve**



/ Package Dimensions



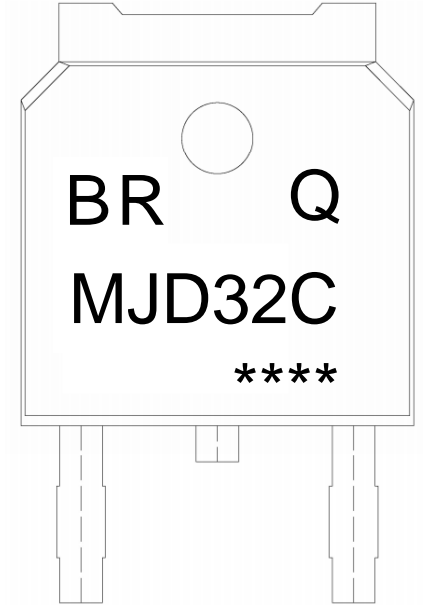
单位: mm

Symbol	Dimensions In Millimeters		Symbol	Dimensions In Millimeters	
	Min.	Max.		Min.	Max.
A	2.40	2.20	E	5.00	5.00
B	1.25	0.95	e1	2.00	2.00
b	0.55	0.45	e2	4.00	4.00
b1	0.55	0.45	L3	9.85	9.85
D	6.75	6.45	L4	1.70	2.00
D1	6.75	6.45	L5	1.70	2.00
L3	9.85	9.85	L6	1.70	2.00
L4	1.70	2.00	L7	1.70	2.00
L5	1.70	2.00	L8	1.70	2.00
L6	1.70	2.00	L9	1.70	2.00
L7	1.70	2.00	L10	1.70	2.00
L8	1.70	2.00	L11	1.70	2.00
L9	1.70	2.00	L12	1.70	2.00
L10	1.70	2.00	L13	1.70	2.00
L11	1.70	2.00	L14	1.70	2.00
L12	1.70	2.00	L15	1.70	2.00
L13	1.70	2.00	L16	1.70	2.00
L14	1.70	2.00	L17	1.70	2.00
L15	1.70	2.00	L18	1.70	2.00
L16	1.70	2.00	L19	1.70	2.00
L17	1.70	2.00	L20	1.70	2.00
L18	1.70	2.00	L21	1.70	2.00
L19	1.70	2.00	L22	1.70	2.00
L20	1.70	2.00	L23	1.70	2.00
L21	1.70	2.00	L24	1.70	2.00
L22	1.70	2.00	L25	1.70	2.00
L23	1.70	2.00	L26	1.70	2.00
L24	1.70	2.00	L27	1.70	2.00
L25	1.70	2.00	L28	1.70	2.00
L26	1.70	2.00	L29	1.70	2.00
L27	1.70	2.00	L30	1.70	2.00
L28	1.70	2.00	L31	1.70	2.00
L29	1.70	2.00	L32	1.70	2.00
L30	1.70	2.00	L33	1.70	2.00
L31	1.70	2.00	L34	1.70	2.00
L32	1.70	2.00	L35	1.70	2.00
L33	1.70	2.00	L36	1.70	2.00
L34	1.70	2.00	L37	1.70	2.00
L35	1.70	2.00	L38	1.70	2.00
L36	1.70	2.00	L39	1.70	2.00
L37	1.70	2.00	L40	1.70	2.00
L38	1.70	2.00	L41	1.70	2.00
L39	1.70	2.00	L42	1.70	2.00
L40	1.70	2.00	L43	1.70	2.00
L41	1.70	2.00	L44	1.70	2.00
L42	1.70	2.00	L45	1.70	2.00
L43	1.70	2.00	L46	1.70	2.00
L44	1.70	2.00	L47	1.70	2.00
L45	1.70	2.00	L48	1.70	2.00
L46	1.70	2.00	L49	1.70	2.00
L47	1.70	2.00	L50	1.70	2.00
L48	1.70	2.00	L51	1.70	2.00
L49	1.70	2.00	L52	1.70	2.00
L50	1.70	2.00	L53	1.70	2.00
L51	1.70	2.00	L54	1.70	2.00
L52	1.70	2.00	L55	1.70	2.00
L53	1.70	2.00	L56	1.70	2.00
L54	1.70	2.00	L57	1.70	2.00
L55	1.70	2.00	L58	1.70	2.00
L56	1.70	2.00	L59	1.70	2.00
L57	1.70	2.00	L60	1.70	2.00
L58	1.70	2.00	L61	1.70	2.00
L59	1.70	2.00	L62	1.70	2.00
L60	1.70	2.00	L63	1.70	2.00
L61	1.70	2.00	L64	1.70	2.00
L62	1.70	2.00	L65	1.70	2.00
L63	1.70	2.00	L66	1.70	2.00
L64	1.70	2.00	L67	1.70	2.00
L65	1.70	2.00	L68	1.70	2.00
L66	1.70	2.00	L69	1.70	2.00
L67	1.70	2.00	L70	1.70	2.00
L68	1.70	2.00	L71	1.70	2.00
L69	1.70	2.00	L72	1.70	2.00
L70	1.70	2.00	L73	1.70	2.00
L71	1.70	2.00	L74	1.70	2.00
L72	1.70	2.00	L75	1.70	2.00
L73	1.70	2.00	L76	1.70	2.00
L74	1.70	2.00	L77	1.70	2.00
L75	1.70	2.00	L78	1.70	2.00
L76	1.70	2.00	L79	1.70	2.00
L77	1.70	2.00	L80	1.70	2.00
L78	1.70	2.00	L81	1.70	2.00
L79	1.70	2.00	L82	1.70	2.00
L80	1.70	2.00	L83	1.70	2.00
L81	1.70	2.00	L84	1.70	2.00
L82	1.70	2.00	L85	1.70	2.00
L83	1.70	2.00	L86	1.70	2.00
L84	1.70	2.00	L87	1.70	2.00
L85	1.70	2.00	L88	1.70	2.00
L86	1.70	2.00	L89	1.70	2.00
L87	1.70	2.00	L90	1.70	2.00
L88	1.70	2.00	L91	1.70	2.00
L89	1.70	2.00	L92	1.70	2.00
L90	1.70	2.00	L93	1.70	2.00
L91	1.70	2.00	L94	1.70	2.00
L92	1.70	2.00	L95	1.70	2.00
L93	1.70	2.00	L96	1.70	2.00
L94	1.70	2.00	L97	1.70	2.00
L95	1.70	2.00	L98	1.70	2.00
L96	1.70	2.00	L99	1.70	2.00
L97	1.70	2.00	L100	1.70	2.00

32

T0=25

**/ Marking Instructions**



BR

Q

MJD32C

\*\*\*\*

Note:

BR:            Company Code

Q:             Automobile halogen-free product Code

MJD32C:     Product Type

\*\*\*\*:         Lot No. Code, code change with Lot No

( ) /


Note:

- |   |         |            |   |
|---|---------|------------|---|
| 1 | 150 200 | 60 120sec; | 1.Preheating:150~200 , Time:60~120sec.  |
| 2 | 255±5   | 5±0.5sec;  | 2.Peak Temp.:255±5 , Duration:5±0.5sec. |
| 3 | 2 10    | /sec.      | 3. Cooling Speed: 2~10 /sec.            |