

/ Descriptions

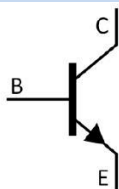
TO-252 NPN

/ Features

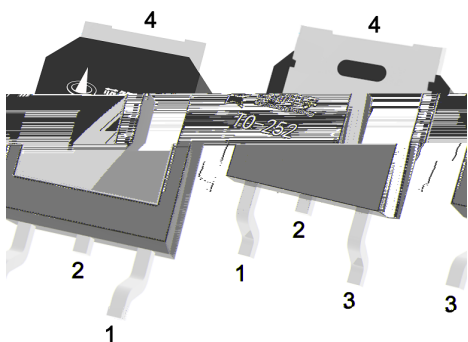
AEC-Q101

/ Applications

/ Equivalent Circuit



/ Pinning



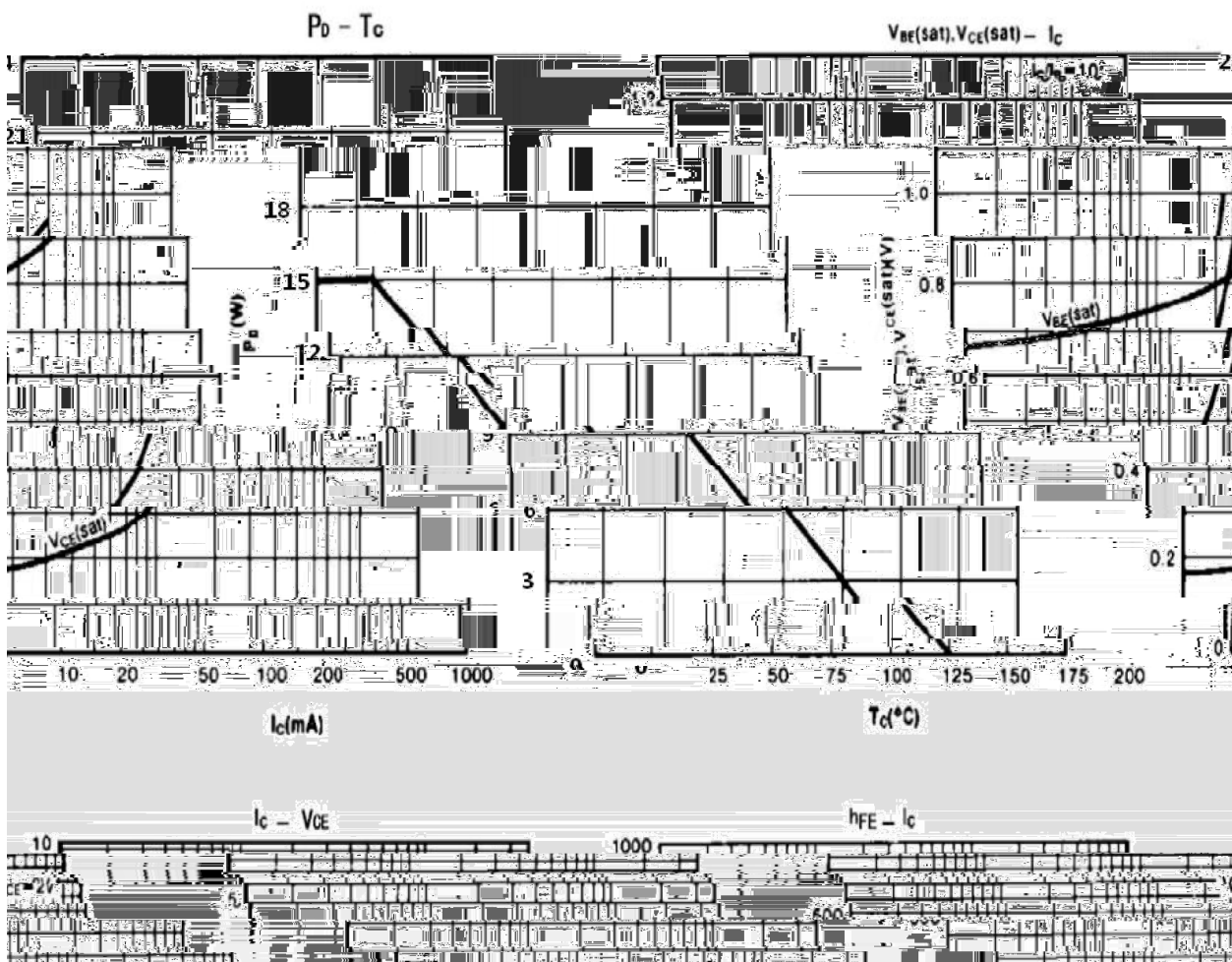
/ h_{FE} Classifications & Marking

/ Absolute Maximum Ratings(Ta=25)

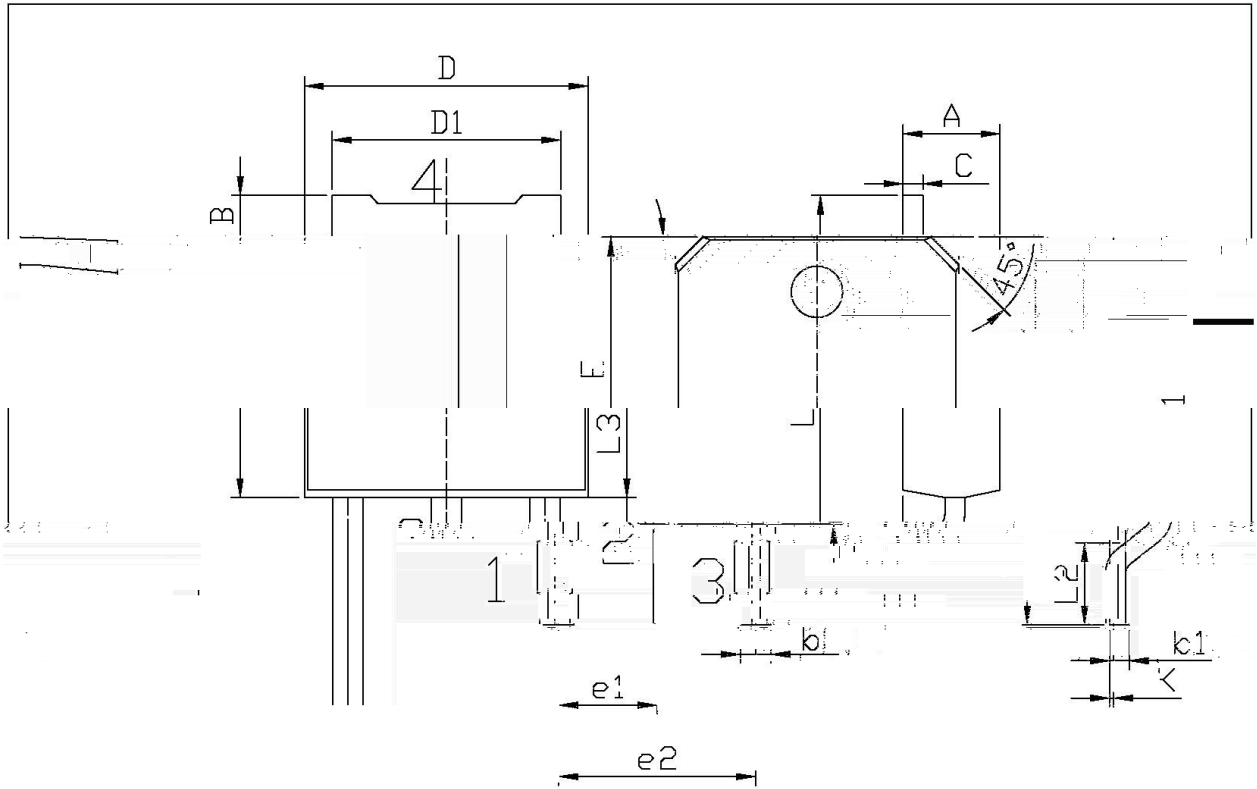
/ Electrical Characteristics(Ta=25)

						μ
						μ

/ Electrical Characteristic Curve



/ Package Dimensions

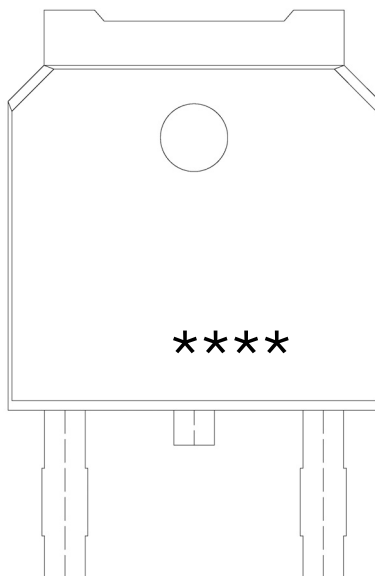


单位: mm

Symbol	Dimensions In Millimeters		Symbol	Dimensions In Millimeters	
	Min	Max		Min	Max
A	2.20	2.40	E	5.95	6.25
B	0.95	1.25	e1	2.24	2.34
C	0.45	0.55	e2	4.13	4.23
D	6.45	6.75	L2	1.70	2.00
D1	5.10	5.50	L3	0.60	0.90
			K	0.00	0.10

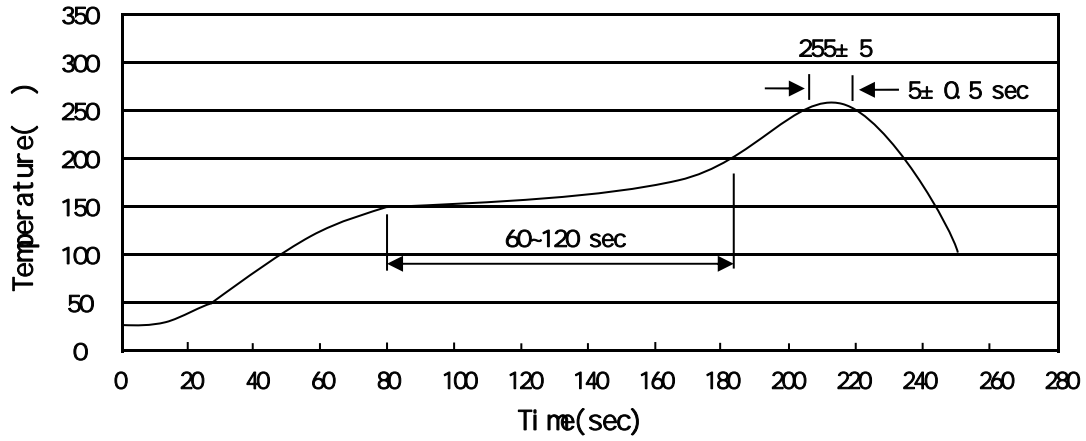
TO-252

/ Marking Instructions



MJD 340

() / Temperature Profile for IR Reflow Soldering(Pb-Free)



± ± ± ±

/ Resistance to Soldering Heat Test Conditions

± ±

/ Packaging SPEC.

	Units/Reel	Reels/Inner Box	Units/Inner Box	Inner Boxes/Outer Box	Units/Outer Box	Reel	Inner Box	Outer Box
	/	/	/	/	/			

	Units/Tube	Tubes/Inner Box	Units/Inner Box	Inner Boxes/Outer Box	Units/Outer Box	Tube	Inner Box	Outer Box
	/	/	/	/	/			

/ Notices