

BRMUR1560AC

Rev.G Jan.-2019

/ Descriptions

TO-220AC

Ultrafast Recovery Diode in a TO-220AC Plastic Package.

/ Features

TO-220AC

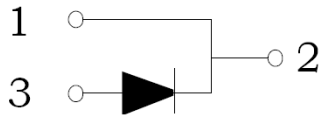
600V

Ultrafast recovery time, popular TO-220AC package, low forward voltage, low leakage current, reverse voltage to 600V.

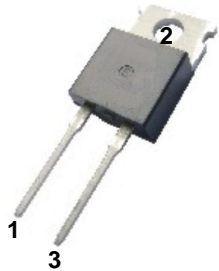
/ Applications

These devices are intended for output rectifiers and flywheel diodes in a variety of high-frequency pulse-width modulated switching regulators. Their low stored charge and attendant fast reverse-recovery behavior minimize electrical noise generation and in many circuits markedly reduce the turn-on dissipation of associated power switching transistors.

/ Equivalent Circuit



/ Pinning



PIN1 2 Cathode

PIN 3 Anode

/ h_{FE} Classifications & Marking

See Marking Instructions

BRMUR1560AC

Rev.G Jan.-2019

Parameter	Symbol	Rating	Unit
Peak Repetitive Reverse Voltage	V_{RRM}	600	V

BRMUR1560AC

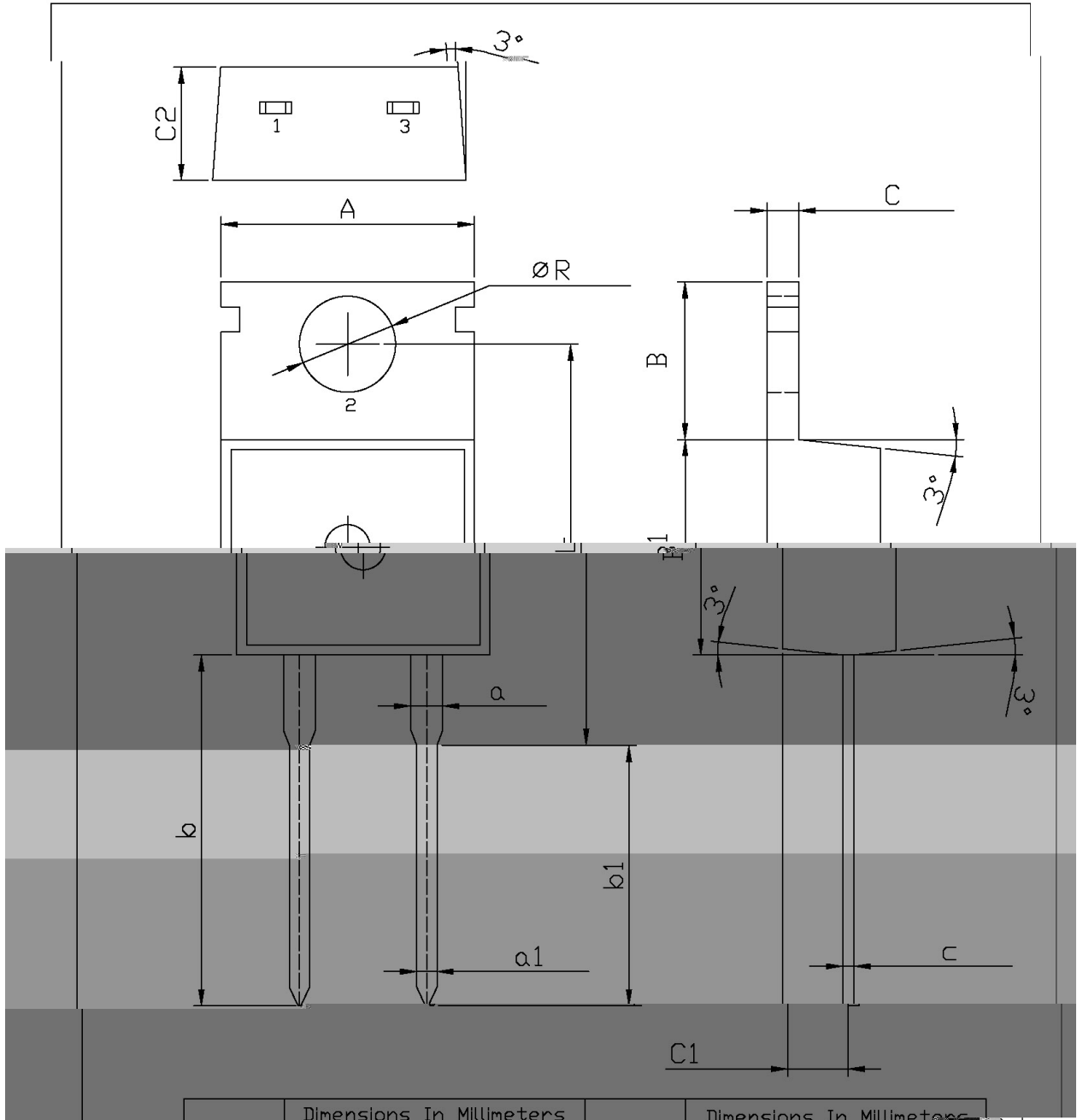
Rev.G Jan.-2019

DATA SHEET

/ Package Dimensions

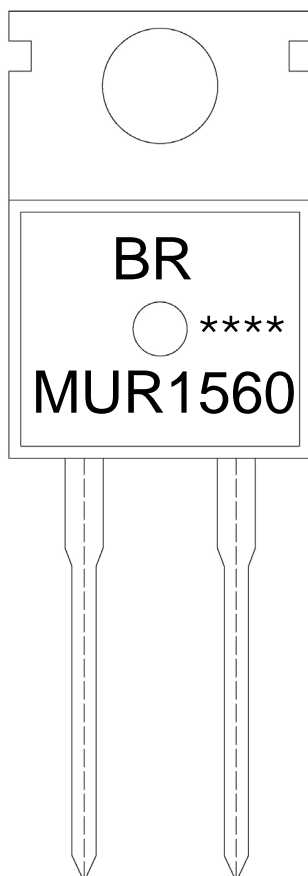
TO-220AC

Unit:mm



Dimensions In Millimeters			Dimensions In Millimeters		
Symbol	.Min	.Max	Symbol	.Min	.Max
A ₁	9.8	10.2	R _D	6.3	6.7
R	3.56	3.64	B1	9.0	9.4
L	15.7	16.1	C1	2.2	2.6
b	12.6	13.6	C	1.2	1.4
b1	9.6	10.6	c	0.4	0.6
a	1.22	1.32	C2	4.3	4.7
a1	0.7	0.9			

/ Marking Instructions



BR

MUR1560

Note:

BR:

Company Code

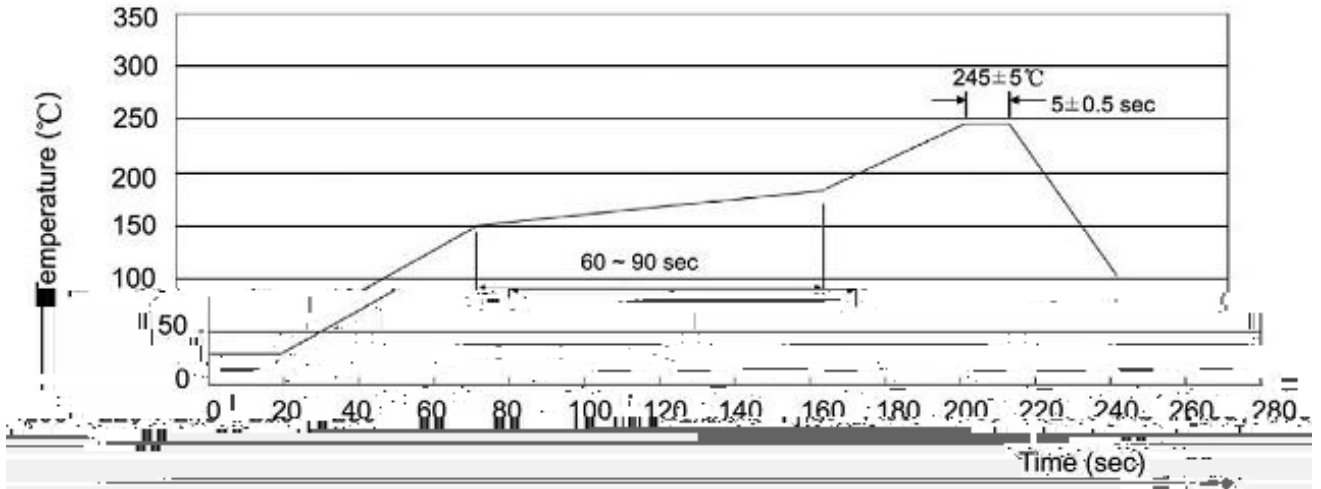
MUR1560

Product Type.

****:

Lot No. Code, code change with Lot No.

() / Temperature Profile for Dip Soldering(Pb-Free)



Note:

- | | | | | | |
|---|-------|-----|-----------|--------|---|
| 1 | 150 | 180 | 60 | 90sec; | 1.Preheating:150~180 , Time:60~90sec. |
| 2 | 255±5 | | 5±0.5sec; | | 2.Peak Temp.:255±5 , Duration:5±0.5sec. |
| 3 | | 2 | 10 | /sec. | 3. Cooling Speed: 2~10 /sec. |

/ Resistance to Soldering Heat Test Conditions

270±5 10±1 sec. Temp.:270±5 Time:10±1 sec

/ Packaging SPEC.

/ BULK

Package Type 封装形式	Units 包装数量					Dimension 包装尺寸 (unit: mm ³)		
	Units/Bag 只/袋	Bags/Inner Box 袋/盒	Units/Inner Box 只/盒	Inner Boxes/Outer Box 盒/箱	Units/Outer Box 只/箱	Bag 袋	Inner Box 盒	Outer Box 箱
TO-220/F/AC	200	10	2,000	5	10,000	135×190	237×172×102	560×245×195

/ TUBE

Package Type 封装形式	Units 包装数量					Dimension 包装尺寸 (unit: mm ³)		
	Units/Tube 只/套管	Tubes/Inner Box 套管/盒	Units/Inner Box 只/盒	Inner Boxes/Outer Box 盒/箱	Units/Outer Box 只/箱	Tube 套管	Inner Box 盒	Outer Box 箱
TO-220/F/AC	50	20	1,000	5	5,000	532×31.4×5.5	555×164×50	575×290×180

/ Notices