

BRSC04650DP

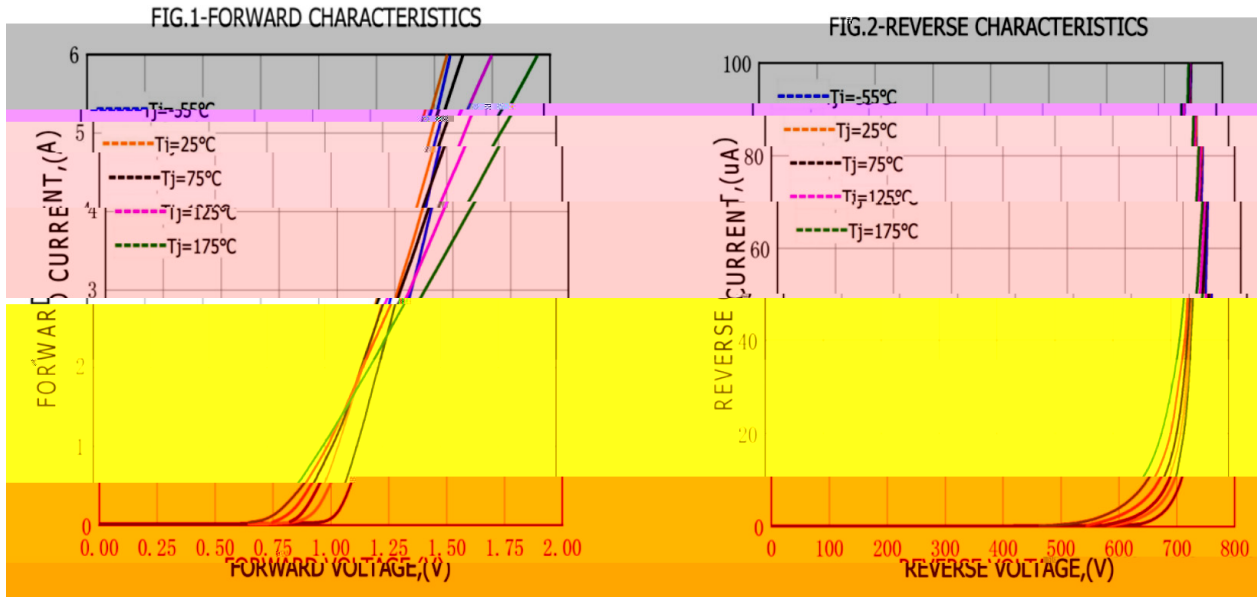
Rev.B Jun.-2025



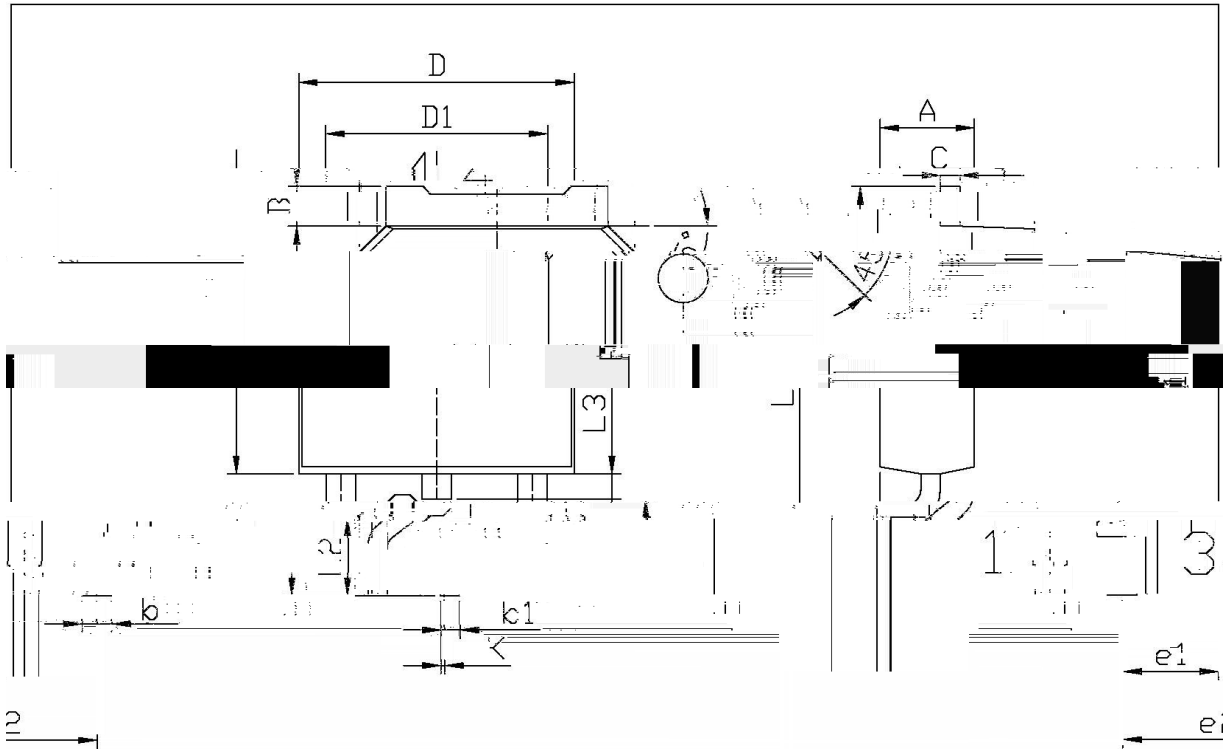
DATA SHEET

| Parameter | Symbol | Rating | Unit |
|---|-----------|--------|------|
| Peak Repetitive Reverse Voltage | V_{RRM} | 650 | V |
| Maximum RMS Voltage | V_{RMS} | 455 | V |
| Maximum DC blocking Voltage | V_{DC} | 650 | V |
| Continuous Forward Current, $T_c=155$ | I_F | 4 | A |
| Peak forward surge current, $t_p=10ms$ | I_{FSM} | 42 | A |
| Repetitive Peak Forward Surge Current, $t_p=10ms$ | I_{FRM} | 37 | A |

/ Electrical Characteristic Curve



/ Package Dimensions

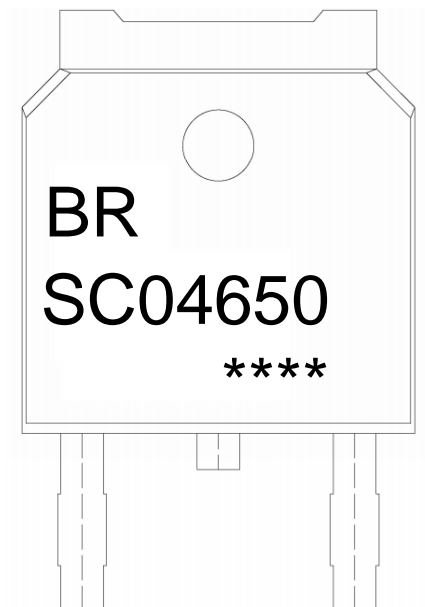


单位: mm

| Symbol | Dimensions In Millimeters | | Symbol | Dimensions In Millimeters | |
|--------|---------------------------|-------|--------|---------------------------|------|
| | Min | Max | | Min | Max |
| A | 2.20 | 2.40 | E | 0.50 | 0.55 |
| B | 0.95 | 1.25 | e1 | 0.60 | 0.90 |
| C | 0.70 | 0.90 | e2 | 0.45 | 0.55 |
| D | 0.45 | 0.55 | L2 | 1.70 | 2.00 |
| D1 | 6.45 | 6.75 | L3 | 0.60 | 0.90 |
| L1 | 9.85 | 10.35 | k1 | 0.30 | 0.35 |
| L2 | 1.70 | 2.00 | K | 0.60 | 0.90 |
| L3 | 0.60 | 0.90 | b | 0.30 | 0.35 |
| k1 | 0.30 | 0.35 | e1 | 0.60 | 0.90 |
| K | 0.60 | 0.90 | e2 | 0.45 | 0.55 |
| b | 0.30 | 0.35 | | | |
| e1 | 0.60 | 0.90 | | | |
| e2 | 0.45 | 0.55 | | | |

T0-252

/ Marking Instructions



BR

SC04650

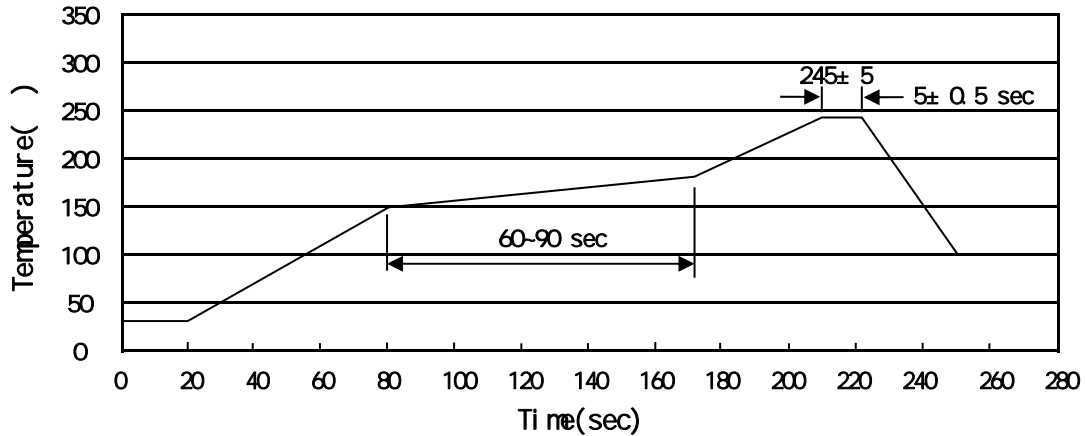
Note:

BR: Company Code

SC04650: Product Type Code

****: Lot No. Code, code change with Lot No.

() / Temperature Profile for IR Reflow Soldering(Pb-Free)



Note:

- 1 150 180 60 90sec; 1.Preheating:150~180 , Time:60~90sec.
- 2 245 5 5 0.5sec; 2.Peak Temp.:245 5 , Duration:5 0.5sec.
- 3 2 10 /sec. 3. Cooling Speed: 2~10 /sec.

/ Resistance to Soldering Heat Test Conditions

260 5 10 1 sec. Temp.:260±5 Time:10±1 sec

/ Packaging SPEC.

/ REEL

| Package Type | Units | | | | | Dimension (unit mm ³) | | |
|--------------|------------|-----------------|-----------------|-----------------------|-----------------|-----------------------------------|------------|-------------|
| | Units/Reel | Reels/Inner Box | Units/Inner Box | Inner Boxes/Outer Box | Units/Outer Box | Reel | Inner Box | Outer Box |
| TO-252 | 2,500 | 2 | 5,000 | 6 | 30,000 | 13 x16 | 360x360x50 | 380x335x366 |

/ TUBE

| Package Type | Units | | | | | Dimension (unit mm ³) | | |
|--------------|------------|-----------------|-----------------|-----------------------|-----------------|-----------------------------------|------------|-------------|
| | Units/Tube | Tubes/Inner Box | Units/Inner Box | Inner Boxes/Outer Box | Units/Outer Box | Tube | Inner Box | Outer Box |
| TO-251/252 | 75 | 48 | 3,600 | 5 | 18,000 | 526x20.5x5.25 | 555x164x50 | 575x290x180 |

/ Notices

All information provided in this document is subject to legal disclaimers.