

/ Descriptions

/ Features

/ Applications

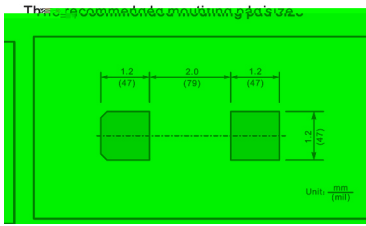
/ Equivalent Circuit



/ Pinning



PIN	DESCRIPTION
1	Cathode
2	Anode



/ Marking

/ Absolute Maximum Ratings(Ta=25)

(°C)			
(,)			
			°C

/ Electrical Characteristics(Ta=25)

			—		
	$ \Delta V_{\pm}$	Δ		—	
				—	
			—		
			—		
			—		

/ Electrical Characteristic Curve

Diagram1: current-voltage characteristic

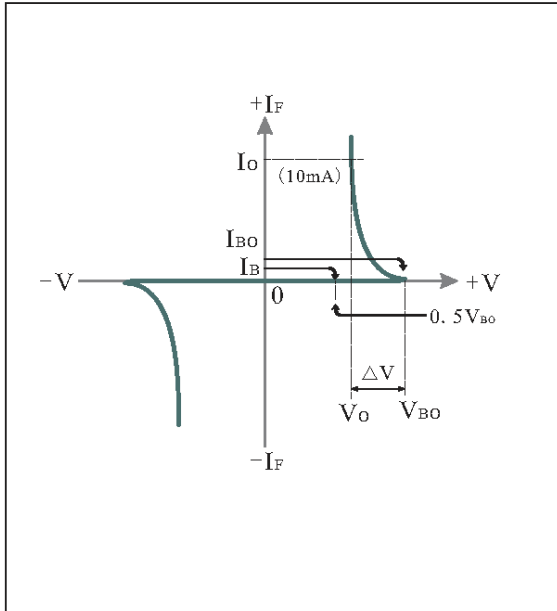


Fig.1: Power dissipation versus ambient temperature(maximum values)

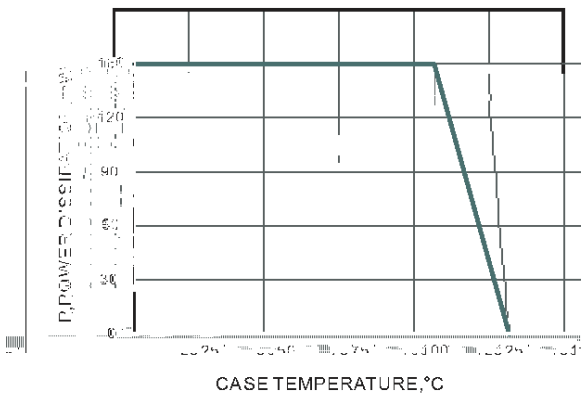


Diagram2: Test circuit for output voltage

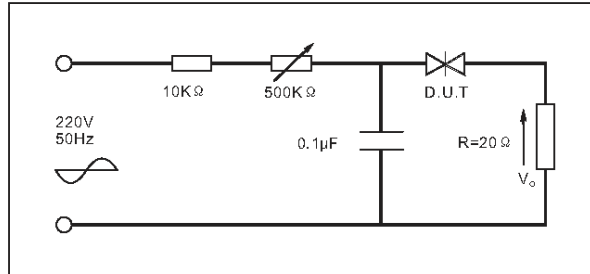


Diagram3: Test circuit see Fig.2. Adjust R for I_p=0.5A

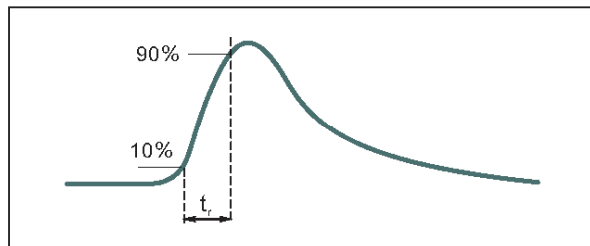


Fig.2: Power dissipation versus ambient temperature(maximum values)

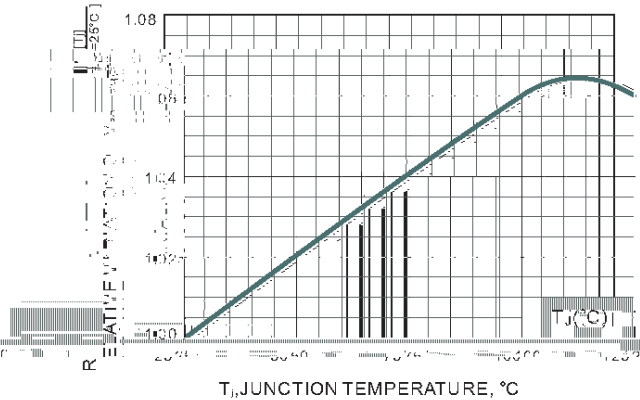
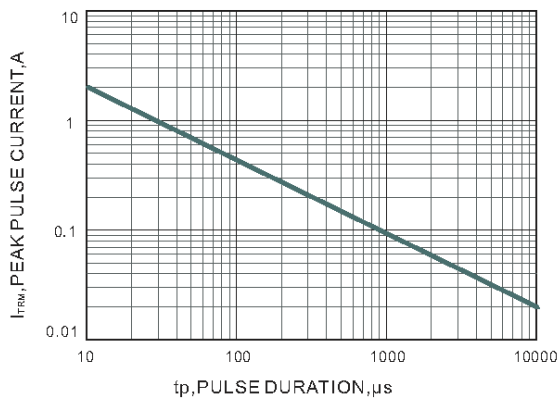
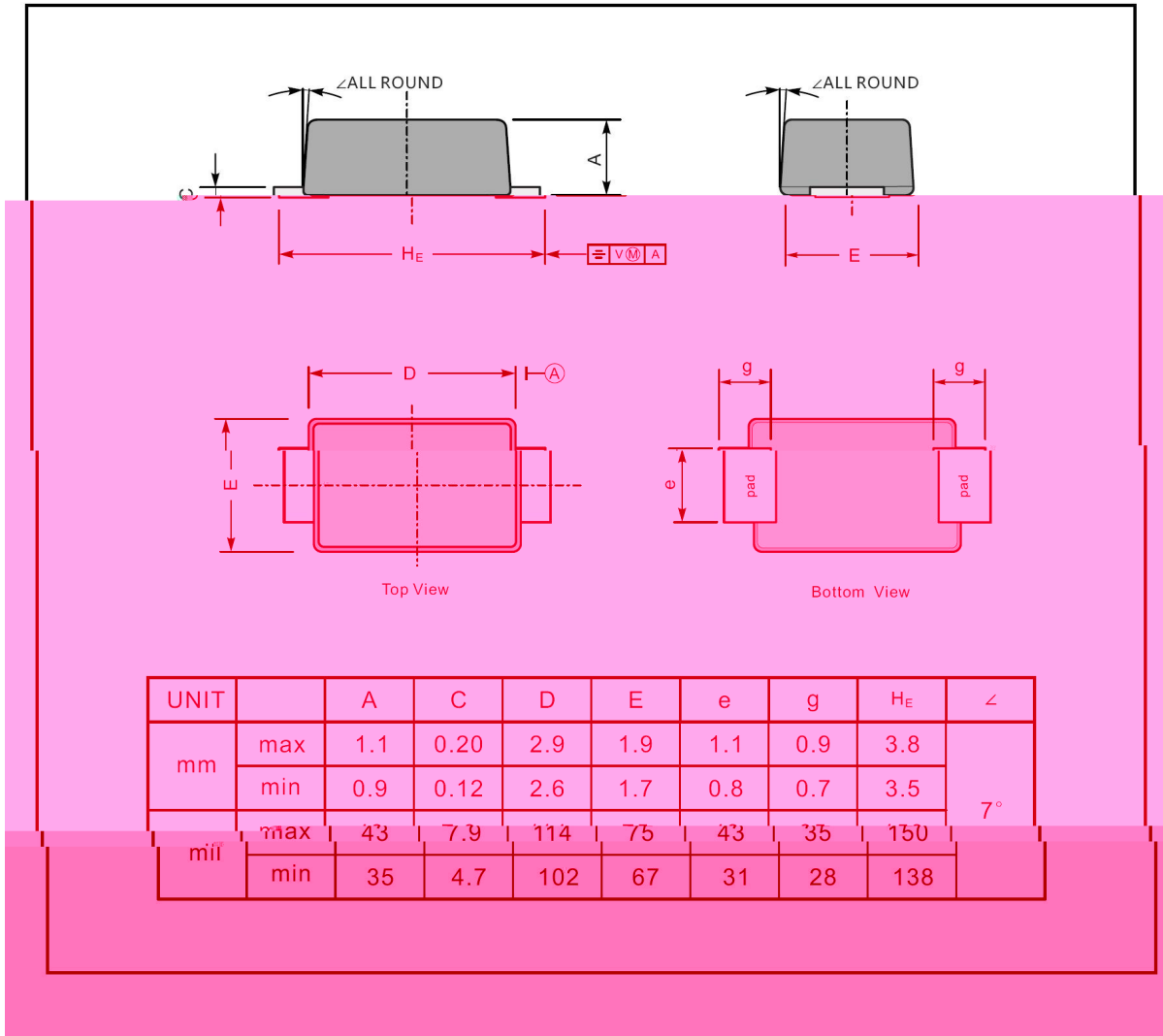


Fig.3: Power dissipation versus ambient temperature(maximum values)



/ Package Dimensions

SOD-123FL



/ Marking Instructions

Marking

Type number	Marking code
DB3W	DB3W
DC34W	DC34W
DB4W	DB4W

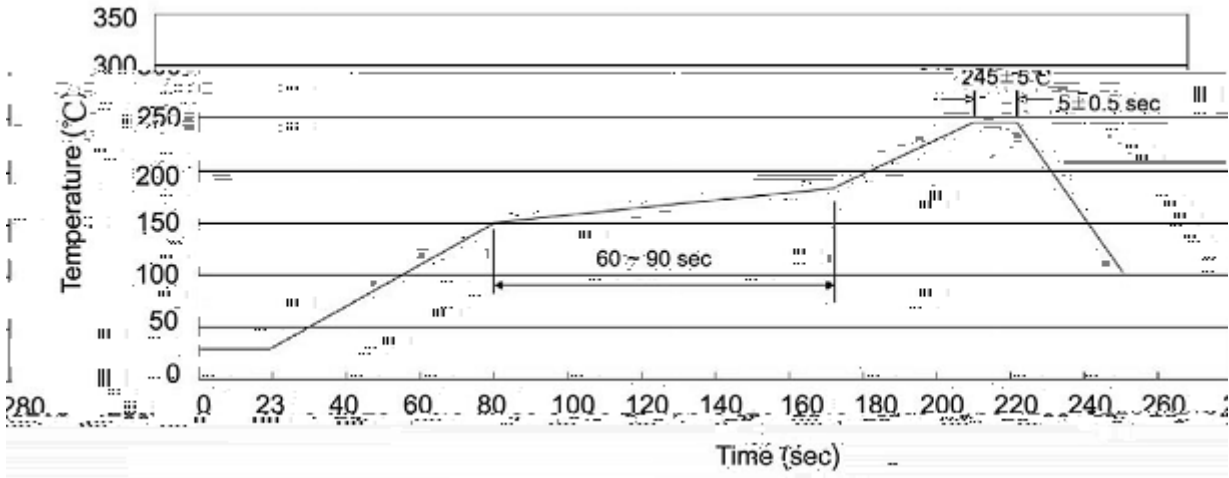
/ Marking Instructions



*

*

() /



/ Resistance to Soldering Heat Test Conditions

/ Packaging SPEC.

封装形式	包装数量					包装尺寸 :		
	Units/Reel 只/卷盘	Reels/Inner Box 卷盘/盒	Units/Inner Box 只/盒	Inner Boxes/Outer Box 盒/箱	Units/Outer Box 只/箱	Reel	Inner Box 盒	Outer Box 箱
						"		

/ Notices