

5 é / Descriptions

.> // xJ' f â 'ož

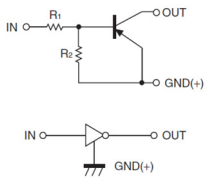
α a / Features

Ä x ž â Š k • ç è — ‹ k x 5 « ^ y ò - v i k —) i D } ož

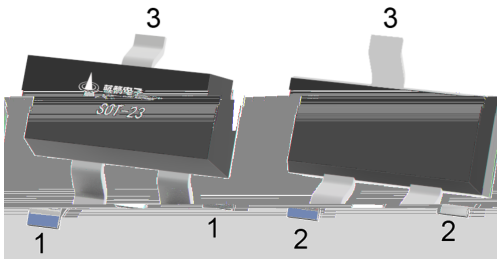
Đ ÷ / Applications

9 • ¼ o • μ è Y C Ü è ož

Ã W] Ô . / Equivalent Circuit



• Ũ - æ / Pinning



y y y

Z Ü B , M V / hFE Classifications & Marking

--	--

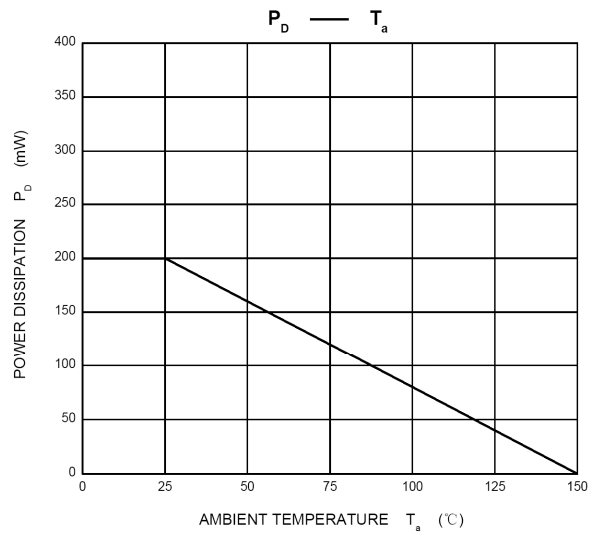
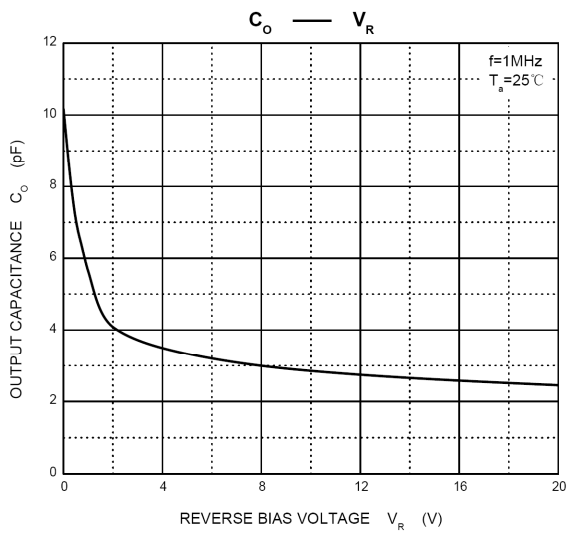
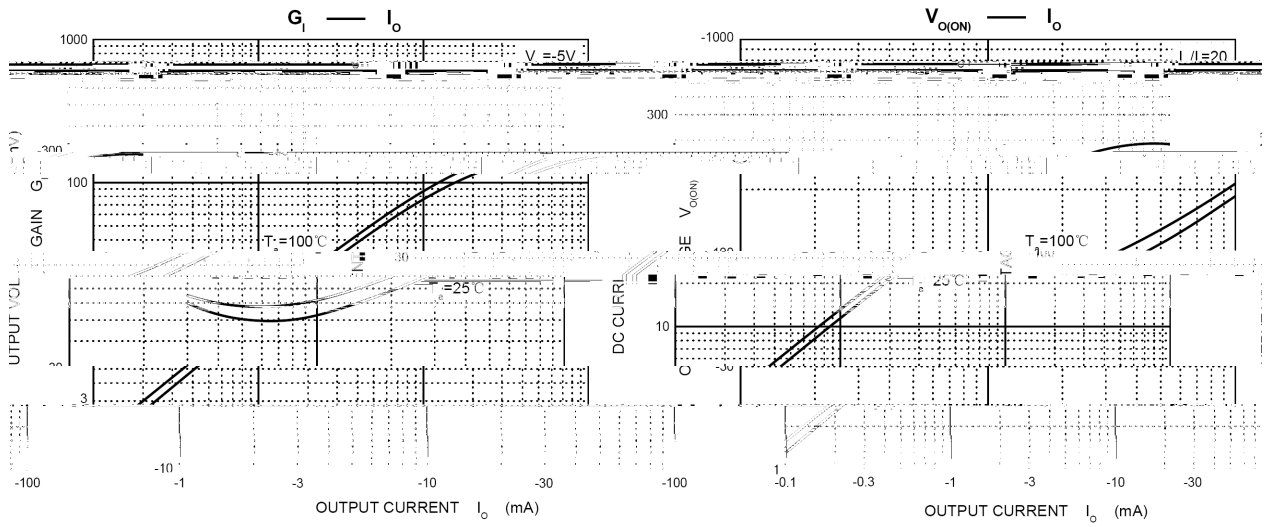
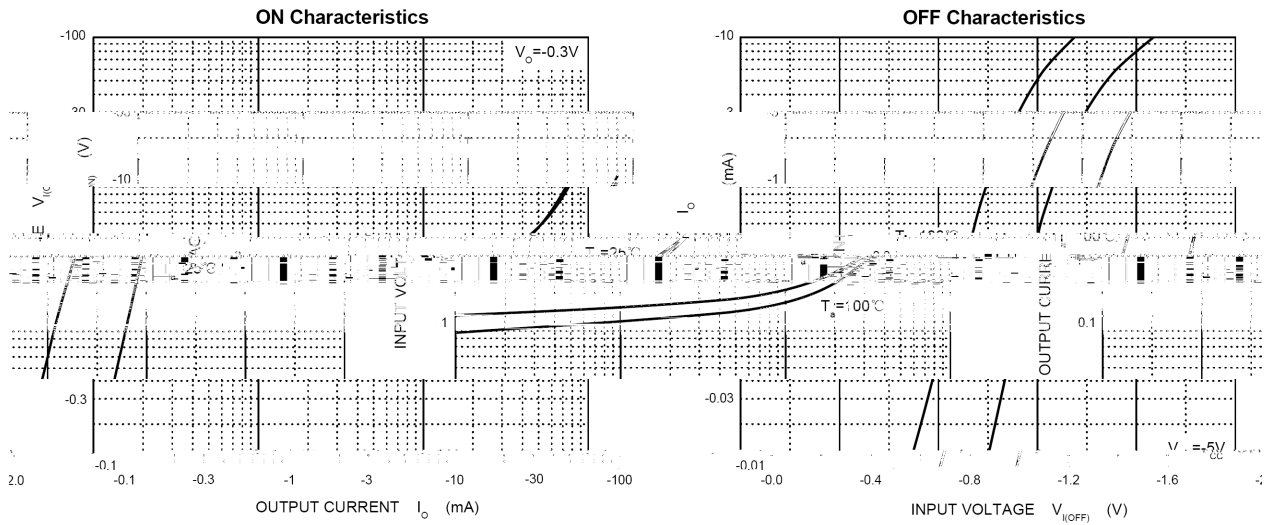
绝对最大额定值 (Ta=25 ;)

@ f	... Z	f ›	% y

电气特性 (Ta=25 ;)

@ f	... Z	y i Ú ^	Â 4 ›	Á ° ›	Â Ý ›	% y

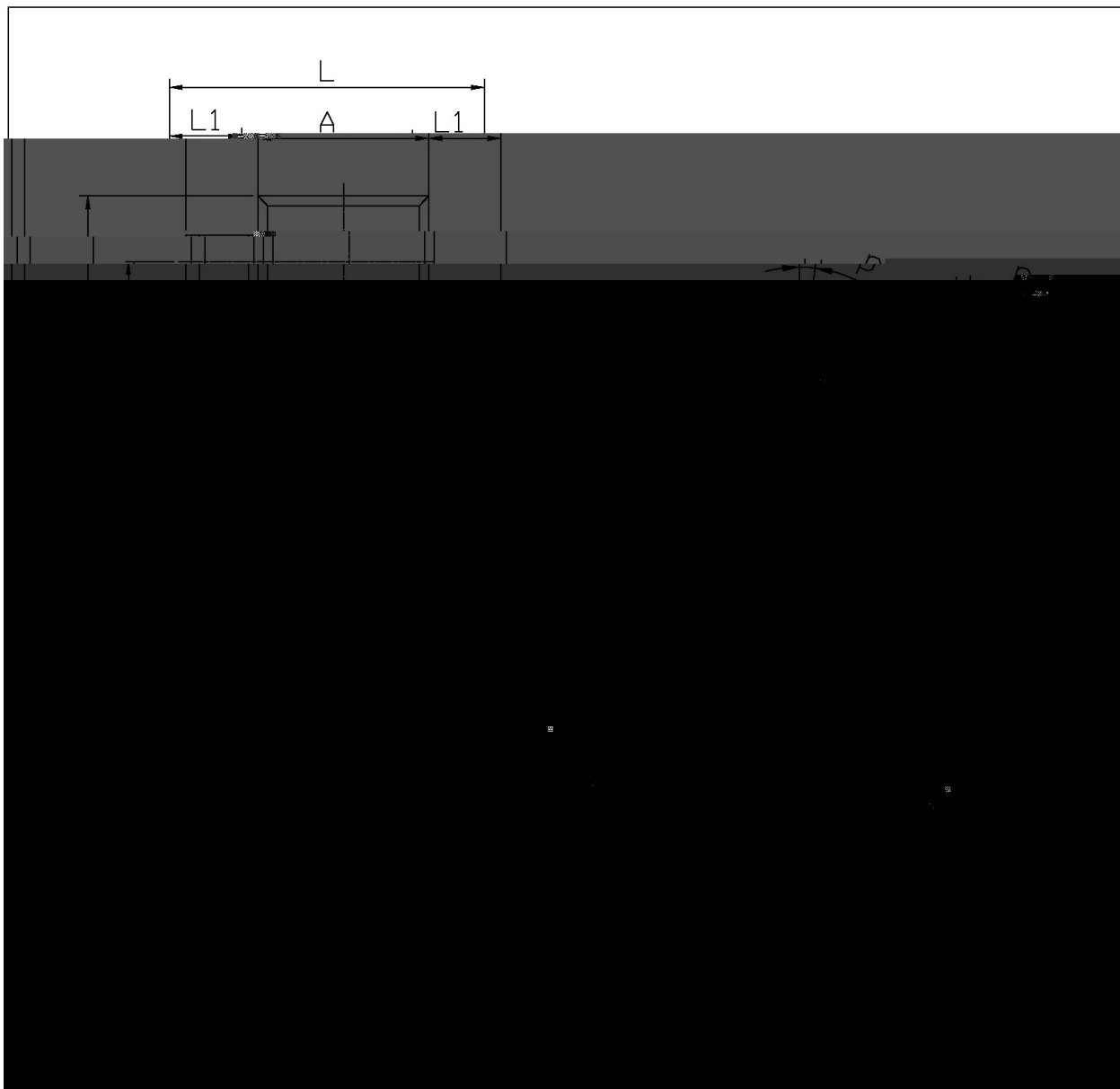
Electrical Characteristic Curve



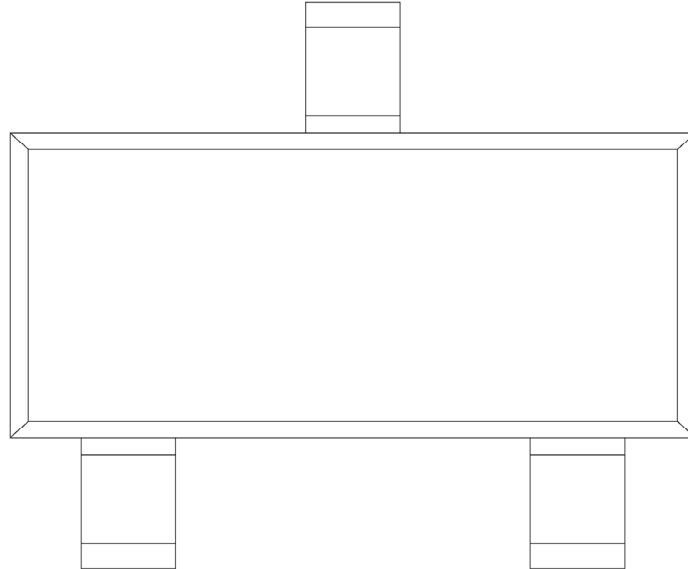
Ø □ =) φ / Package Dimensions

SOT-23

单位: mm



, M y f / Marking Instructions

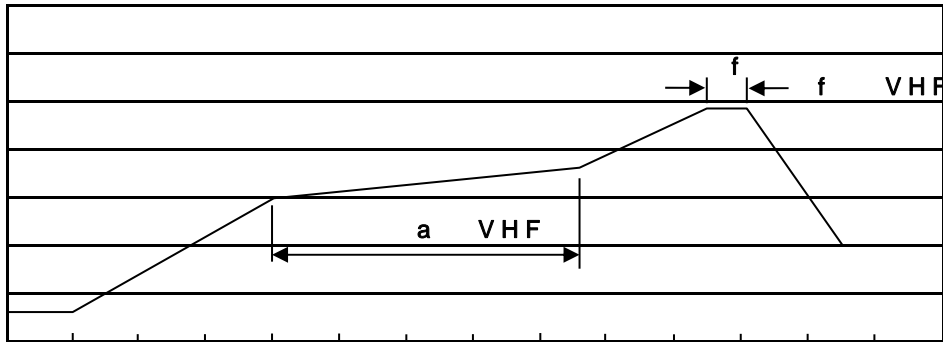


^a ϕ y
. y , [W A
y ° Z W A

. y
y

šWD t...•Žç (x/) / :KSVKXGZ[XK 6XULORK LUX /8 8KLRU] 9URJKXOTM 6

7HPSHUDWXUH



7LPH VHF

^açy

o•Ä ½“† ½ -kž• ½

o•Q›“† r -kž•4Ò r

o•D NòìÒ0,† ½ -

ÂD /Cã p~»] / Resistance to Soldering Heat Test Conditions

“†y r - ž•y r

G P á / Packaging SPEC.

2 & x

7>û~E	;>û:H					;>û p .			Æ
	Units/Reel /--	Reels/Inner Box -- /-	Units/Inner Box /-	Inner Boxes/Outer Box - /1ç	Units/Outer Box /1ç	Reel	Inner Box	Outer Boxç	
						T			

„Đ y f / Notices