

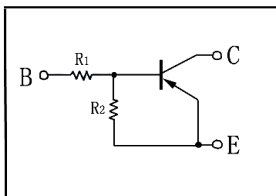
/ Descriptions

JF K\$) * GE G`

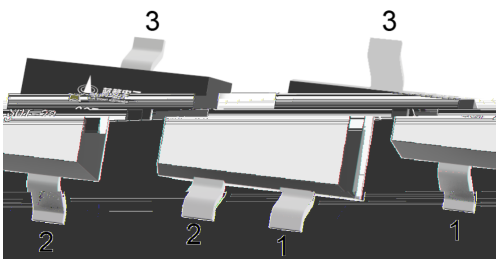
/ Features

/ Applications

/ Equivalent Circuit



/ Pinning



/ hFE Classifications & Marking

--	--

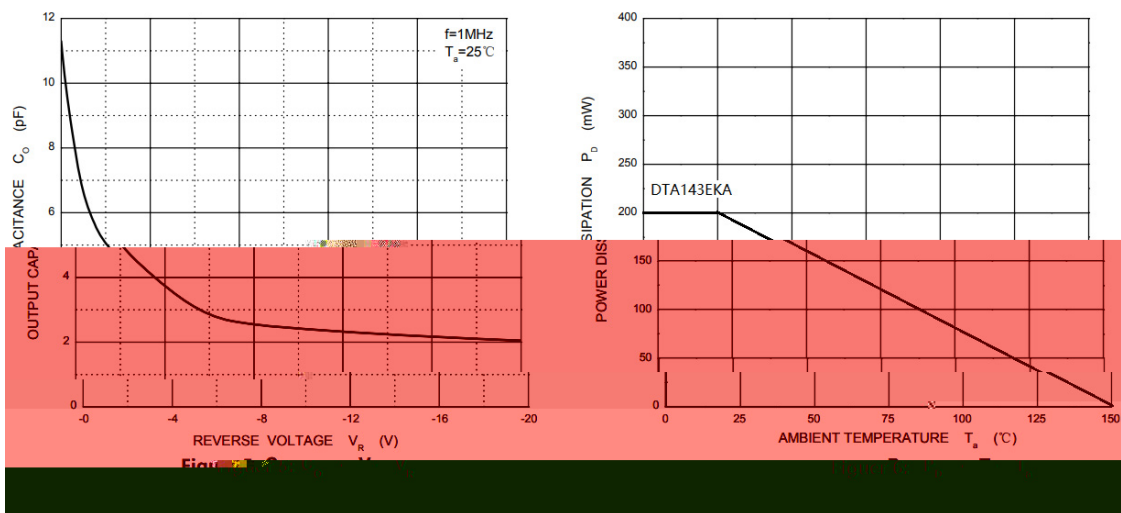
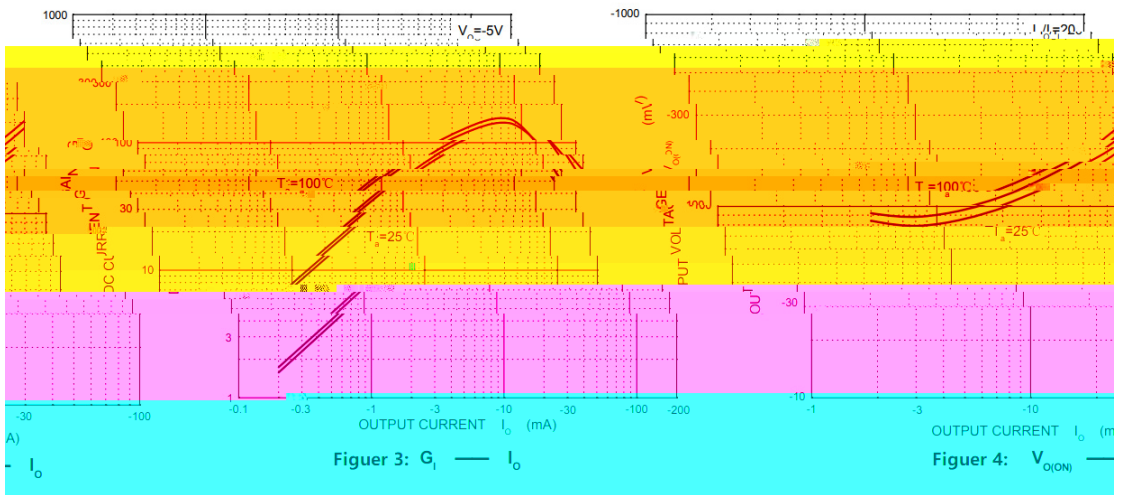
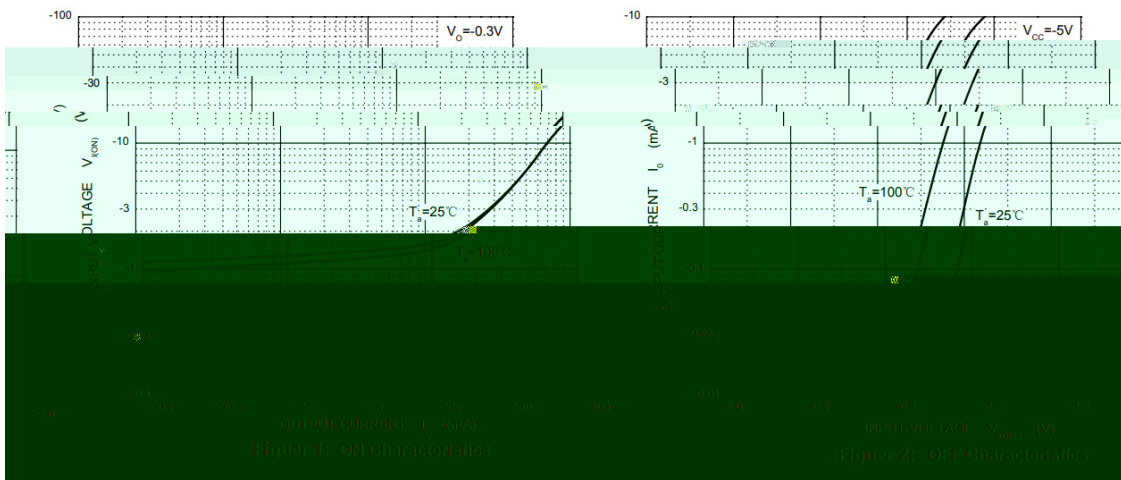
/ Absolute Maximum Ratings(Ta=25)

		~	

/ Electrical Characteristics(Ta=25)

			μ			
						μ
						Ω

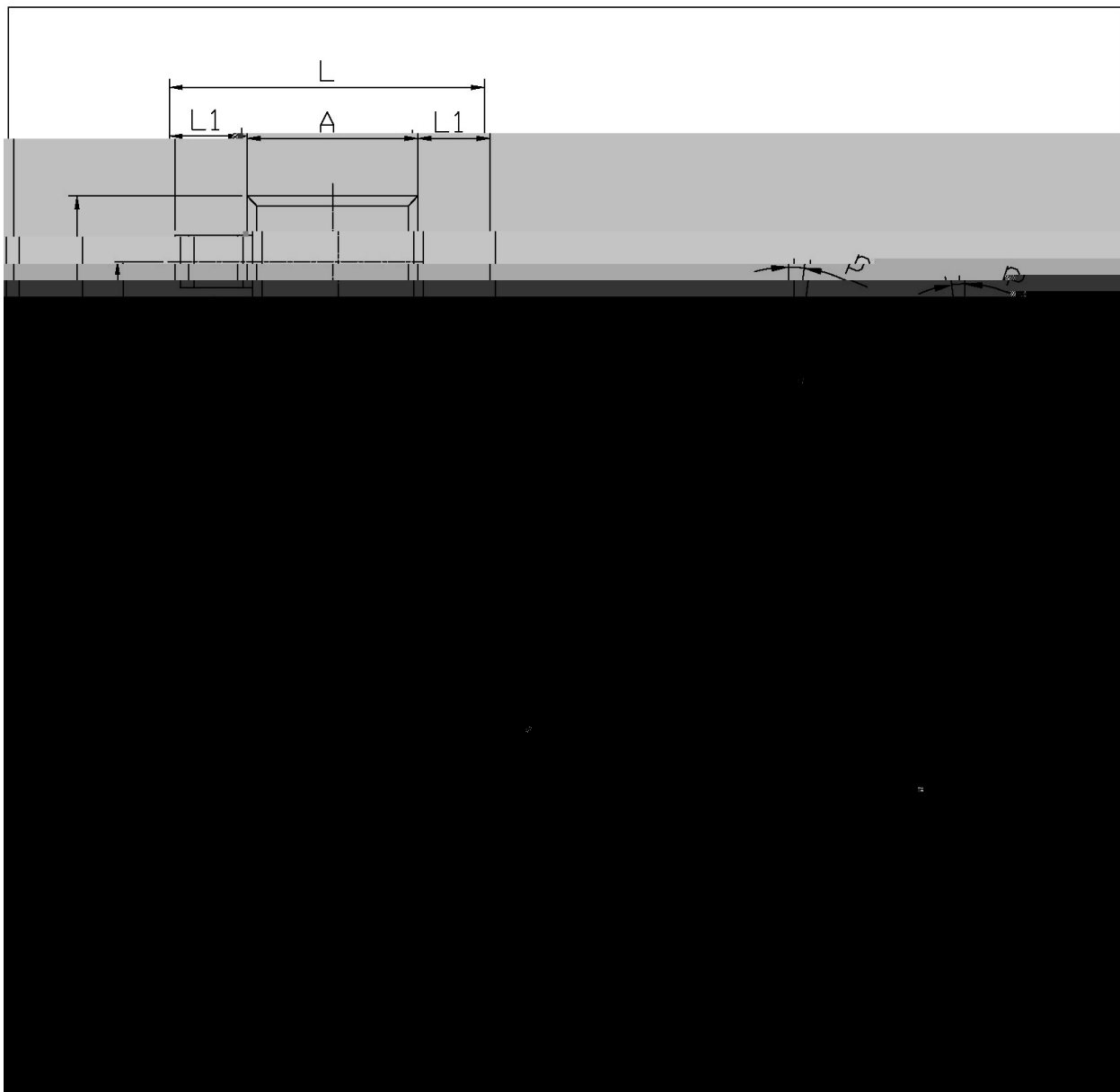
/ Electrical Characteristic Curve



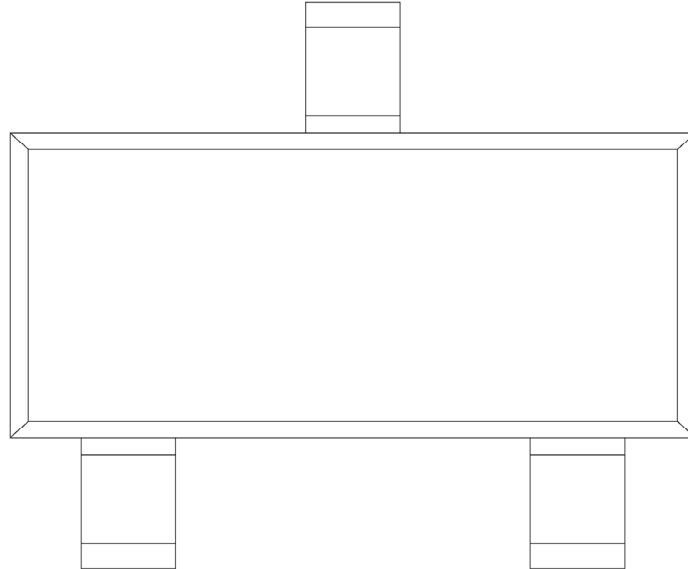
/ Package Dimensions

SOT-23

单位: mm



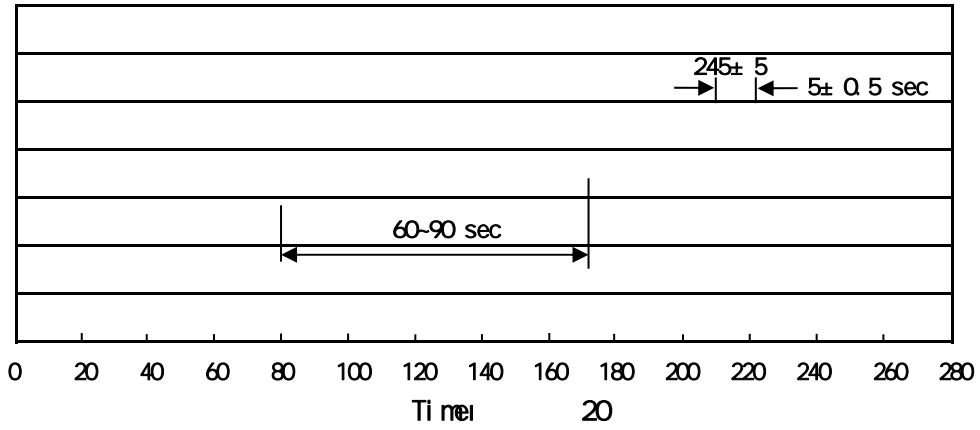
/ Marking Instructions



?

?

() /



... ..

/ Resistance to Soldering Heat Test Conditions

... ..

/ Packaging SPEC.

	Units/Reel	Reels/Inner Box	Units/Inner Box	Inner Boxes/Outer Box	Units/Outer Box	Reel	Inner Box	Outer Box
	/	/	/	/	/			

/ Notices