

/ Descriptions

50V ~ 600V

2.0A

/ Features

RoHS

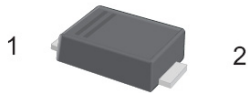
2011/65/EU

/ Applications

/ Equivalent Circuit

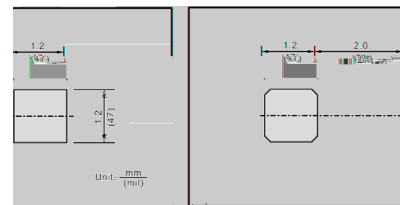


/ Pinning



PIN	DESCRIPTION
1	Cathode
2	Anode

The recommended mounting pad size

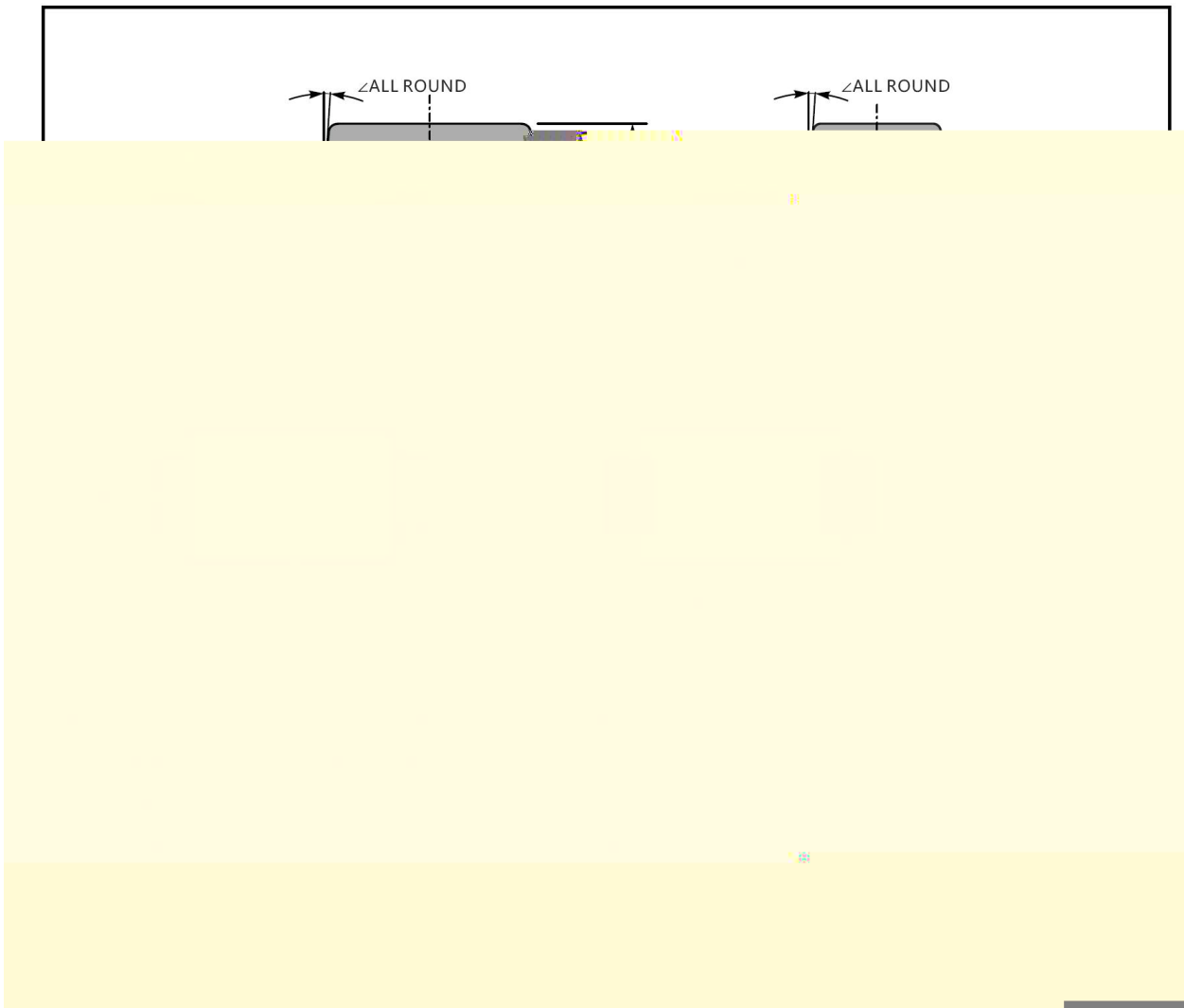


/ Marking

/ Electrical Characteristic Curve

/ Package Dimensions

SOD-123FL

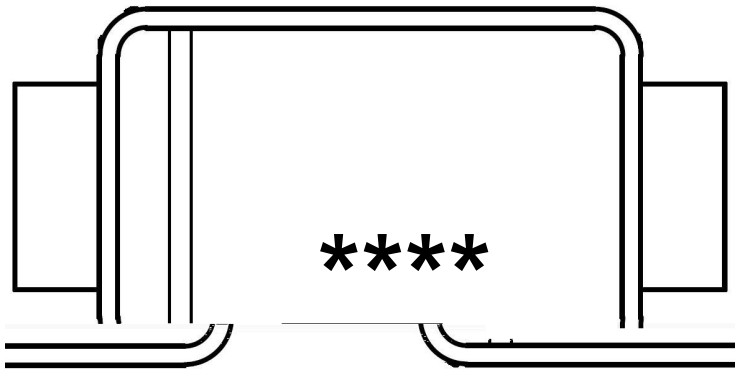


/ Marking Instructions

Marking

Type number	Marking code
ES2AW	E2L
ES2BW	
ES2CW	
ES2DW	
ES2EW	E2M
ES2GW	
ES2JW	E2H

/ Marking Instructions



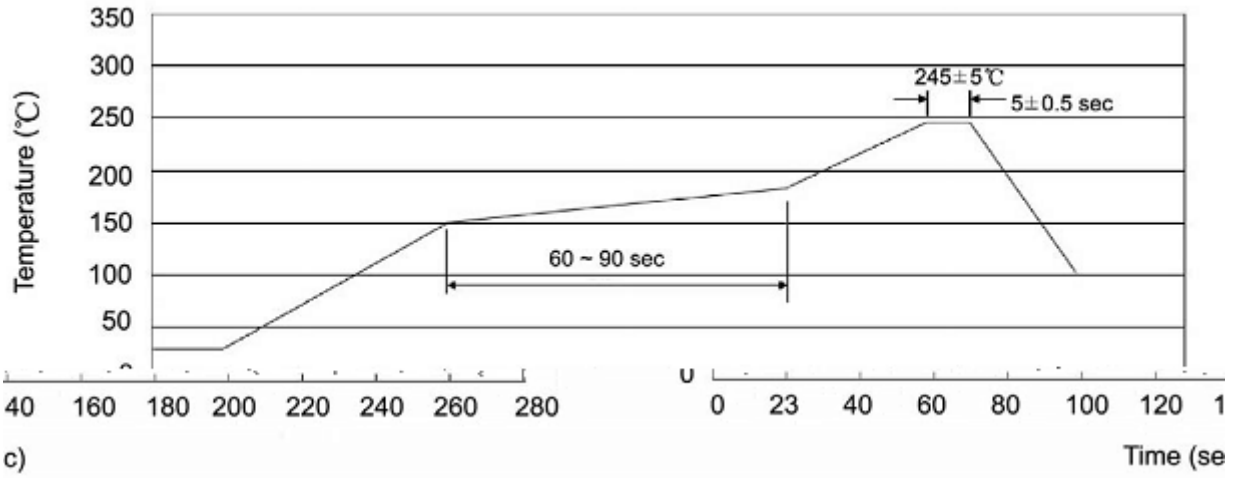
E2L

1

3

E2L

() /



± ± ± ±

/ Resistance to Soldering Heat Test Conditions

± ± ± ±

/ Packaging SPEC.

封装形式	包装数量					包装尺寸 :		
	只卷盘	卷盘盒	只盒	盒箱	只箱	盒	箱	

/ Notices