

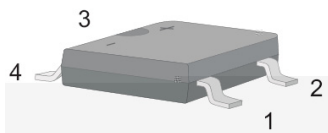
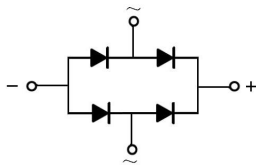
Rev.D May.-2017

1.2A ABF
 1.2A Surface Mount Glass Passivated Bridge Rectifier, ABF thin package.

1000V 1.2A

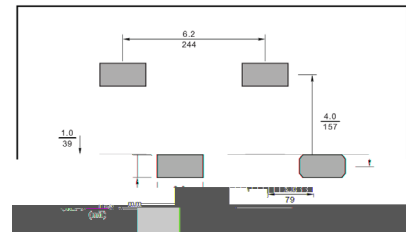
Glass Passivated Chip Junction, Reverse Voltage: 1000V, Forward Current: 1.2A, Fast reverse recovery time, Designed for Surface Mount Application. Halogen free product.

General purpose.



PIN	DESCRIPTION
1	Input Pin (~)
2	Input Pin (~)
3	Output Anode (+)
4	Output Cathode (-)

The recommended mounting pad size



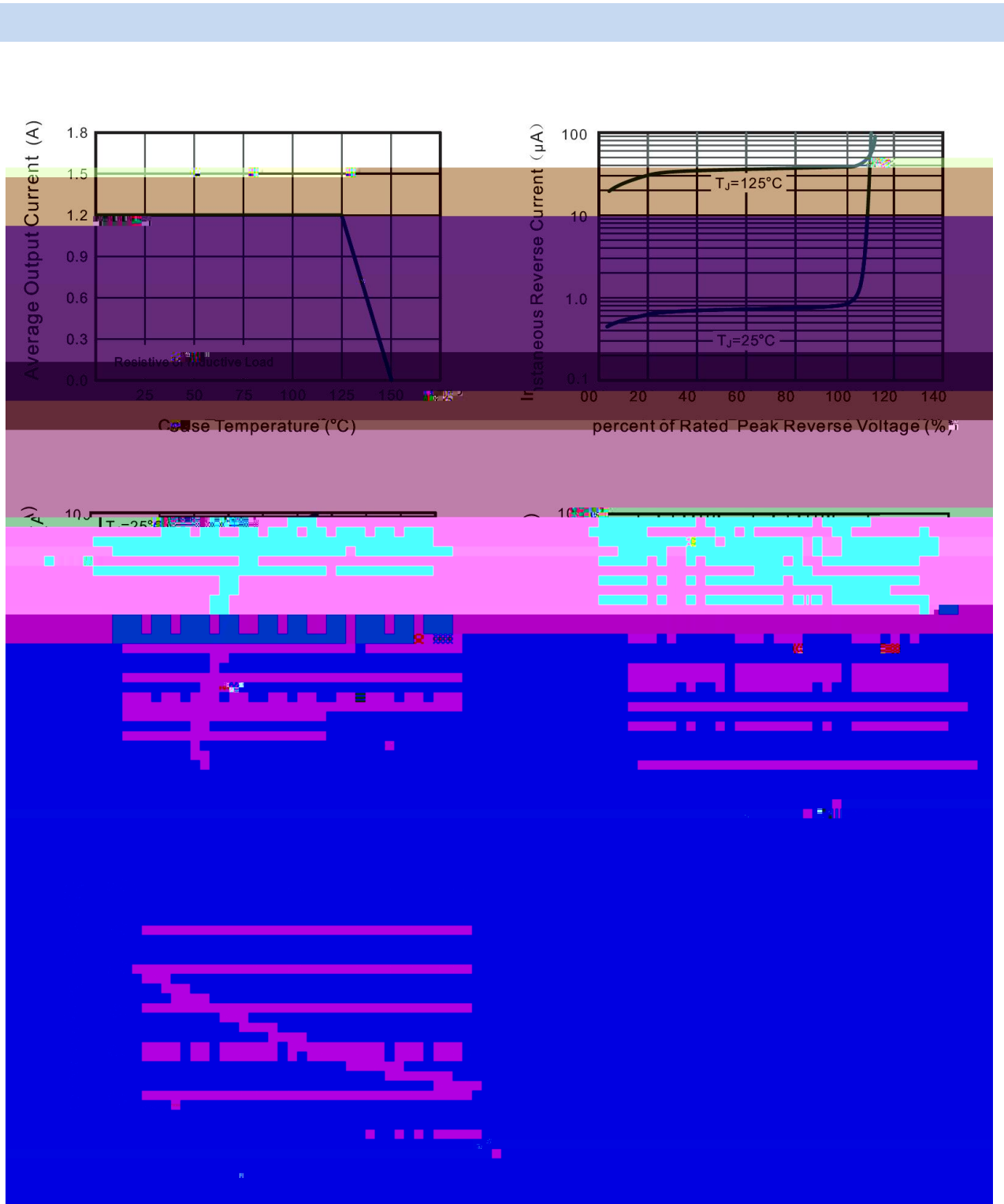
See Marking Instructions.

Parameter	Symbol	Rating	Unit
Maximum Repetitive Peak Reverse Voltage	V_{RRM}	1000	V
Maximum RMS Voltage	V_{RMS}	700	V
Maximum DC Blocking Voltage	V_{DC}	1000	V
Average Rectified Output Current at $T_c = 125$	I_o	1.2	A
Peak Forward Surge Current 8.3 ms Single Half Sine Wave Superimposed on Rated Load	I_{FSM}	40	A
Typical Junction Capacitance ^{Note1}	C_j	30	pF
Typical Thermal Resistance ^{Note2}	$R_{\theta JA}$	75	/W
Operating and Storage Temperature Range	T_j, T_{stg}	-55~150	

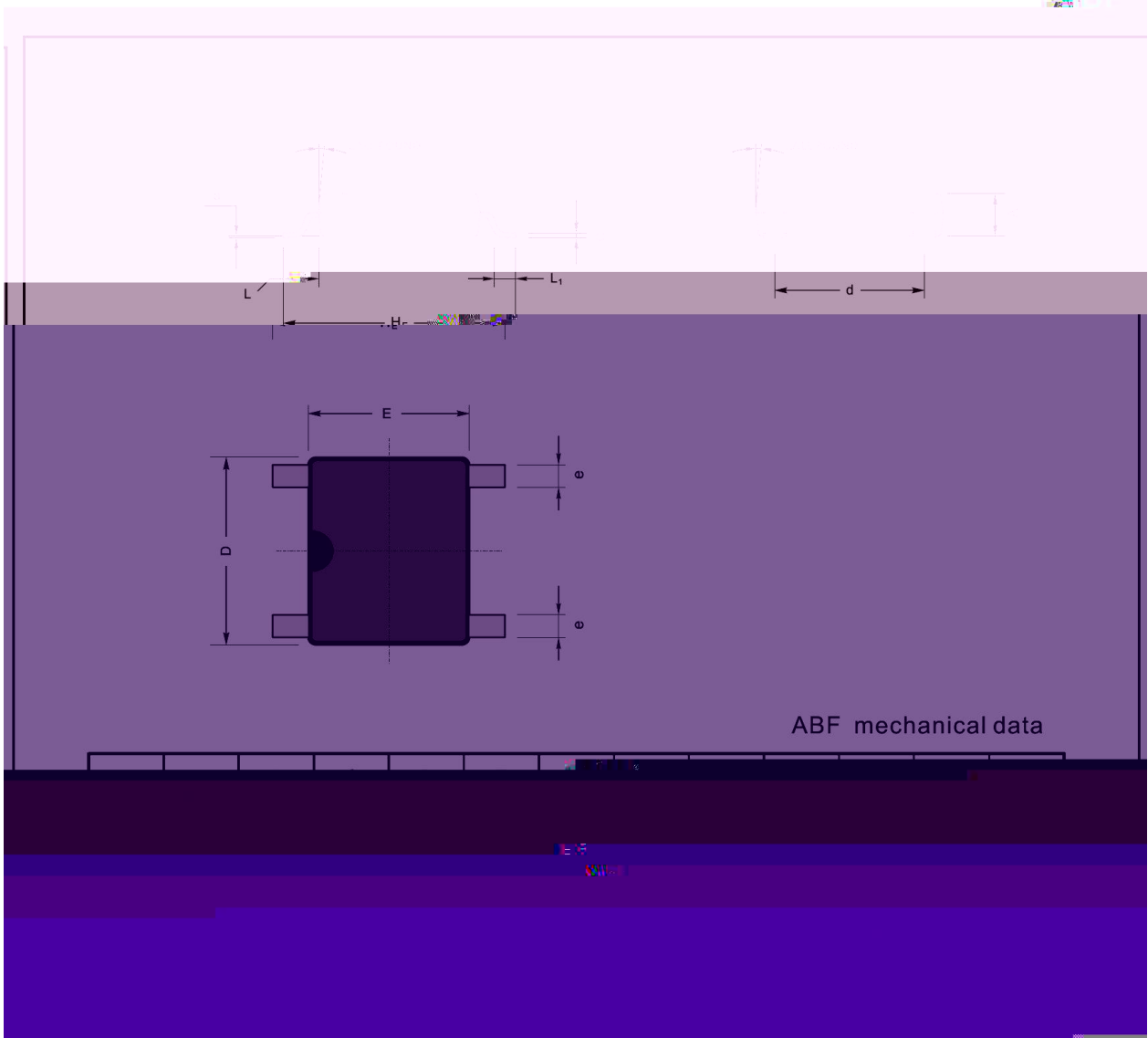
Note:

1. Measured at 1MHz and applied reverse voltage of 4 V D.C.
2. Mounted on glass epoxy PC board with 4× 1.0" X 1.0" (2.54 X 2.54 cm) copper pad.

Parameter	Symbol	Test Conditions	Rating	Unit
Forward Voltage per element	V_F	$I_F=1.2A$	1.3	V
Maximum DC Reverse Current at Maximum DC Blocking Voltage	I_R	$T_a=25$	5.0	μA
		$T_a=125$	50	μA
Maximum Reverse Recovery Time	t_{rr}	$I_F=0.5A$ $I_R=1.0A$ $I_{rr}=0.25A$	200	ns

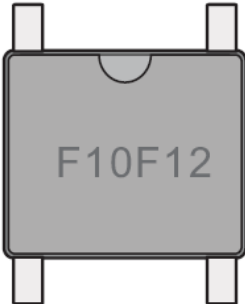


APC



Marking

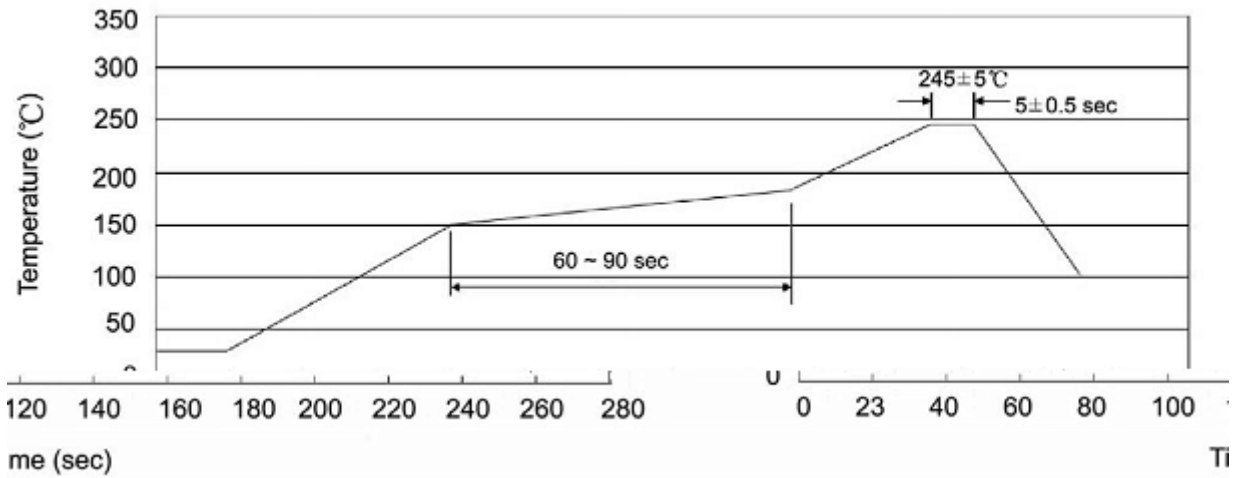
Type number	Marking code
FTB10F-12	F10F12



The diagram shows a rectangular component with four pins (two on the top and two on the bottom). The marking code 'F10F12' is printed on the front face of the component.

Rev.D May.-2017

Rev.D May.-2017



Note:

- | | | | | | |
|---|-----|-----|----|----------|---|
| 1 | 25 | 150 | 60 | 90sec; | 1.Preheating:25~150 , Time:60~90sec. |
| 2 | 245 | 5 | 5 | 0.5sec; | 2.Peak Temp.:245 5 , Duration:5 0.5sec. |
| 3 | | | 2 | 10 /sec. | 3. Cooling Speed: 2~10 /sec. |

260	5	10	1 sec.	Temp.:260 5	Time:10 1 sec
-----	---	----	--------	-------------	---------------

/ REEL

Package Type 封装形式	Units 包装数量					Dimension 包装尺寸 (unit: mm ³)		
	Units/Reel 只/卷盘	Reels/Inner Box 卷盘/盒	Units/Inner Box 只/盒	Inner Boxes/Outer Box 盒/箱	Units/Outer Box 只/箱	Reel	Inner Box 盒	Outer Box 箱
ABF	5000	2	10000	5	50000	13 x15	336X336X40	380X335X366