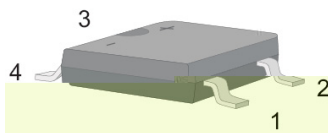
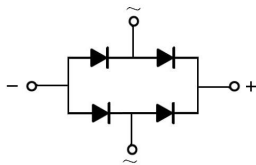


Rev.D May.-2017

1.5A ABF
 1.5A Surface Mount Glass Passivated Bridge Rectifier, ABF thin package.

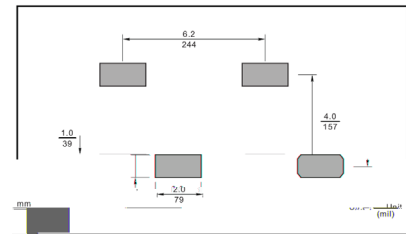
1000V 1.5A
 Glass Passivated Chip Junction, Reverse Voltage: 1000V, Forward Current: 1.5A, Fast reverse recovery time, Designed for Surface Mount Application. Halogen free product.

General purpose.



PIN	DESCRIPTION
1	Input Pin (~)
2	Input Pin (~)
3	Output Anode (+)
4	Output Cathode (-)

The recommended mounting pad size



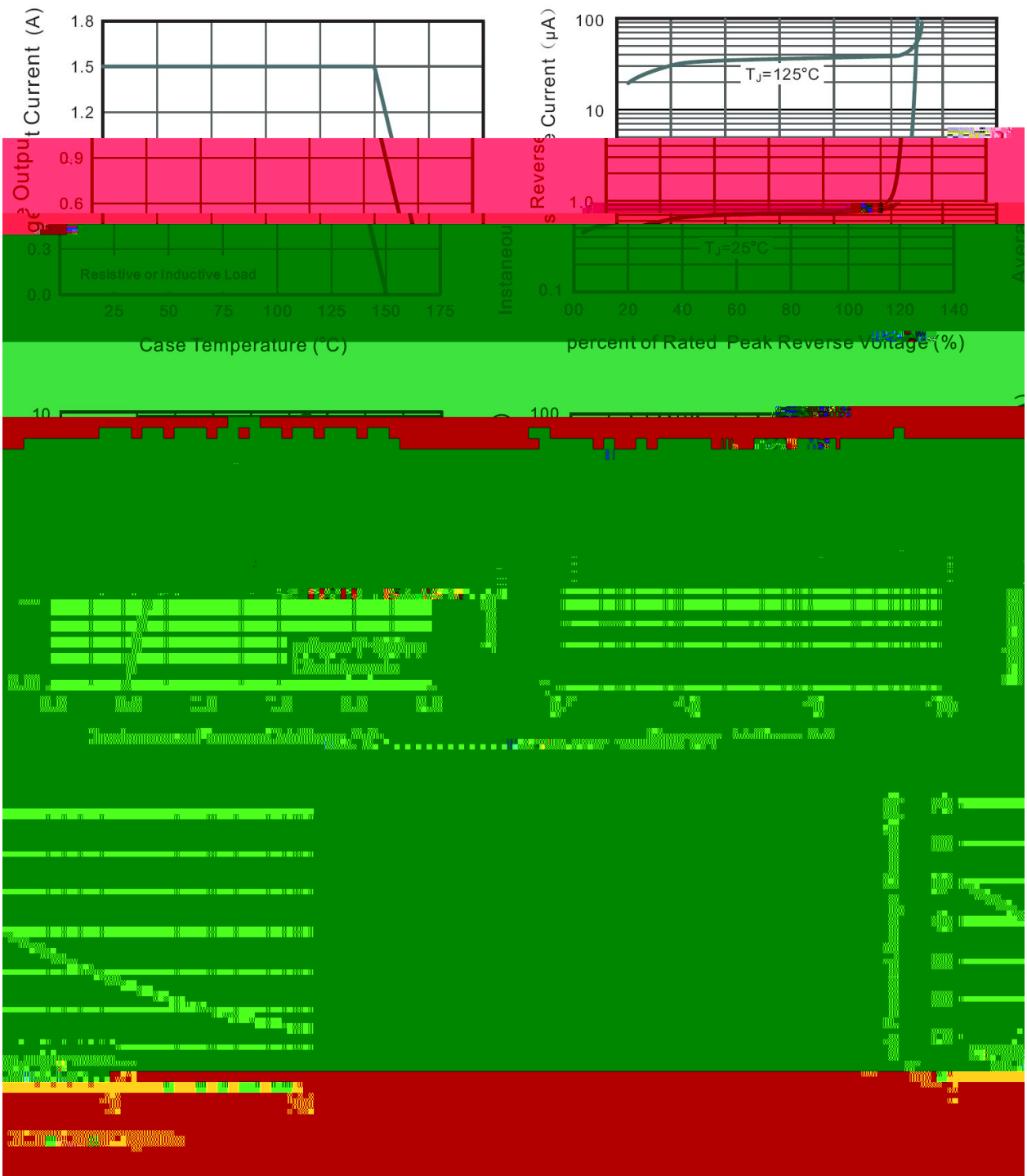
See Marking Instructions.

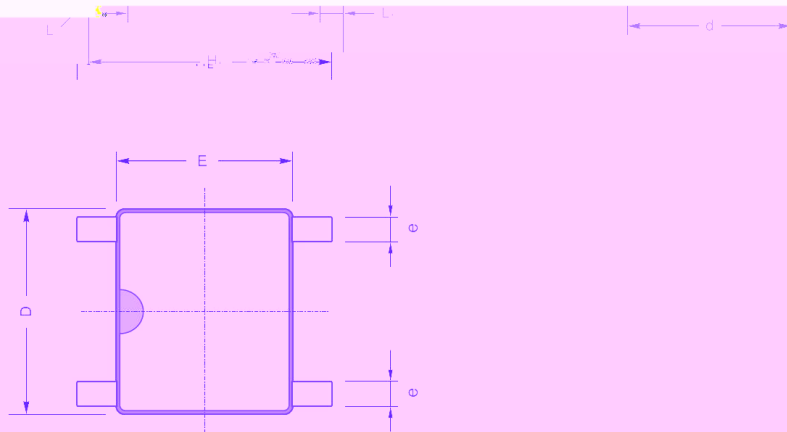
Parameter	Symbol	Rating	Unit
Maximum Repetitive Peak Reverse Voltage	V_{RRM}	1000	V
Maximum RMS Voltage	V_{RMS}	700	V
Maximum DC Blocking Voltage	V_{DC}	1000	V
Average Rectified Output Current at $T_c = 125^\circ\text{C}$	I_o	1.5	A
Peak Forward Surge Current 8.3 ms Single Half Sine Wave Superimposed on Rated Load	I_{FSM}	50	A
Typical Junction Capacitance ^(Note1)	C_j	35	pF
Typical Thermal Resistance ^{Note2}	R_{JA}	70	$^\circ\text{C}/\text{W}$
Operating and Storage Temperature Range	T_j, T_{stg}	-55~150	$^\circ\text{C}$

Note:

1. Measured at 1MHz and applied reverse voltage of 4 V D.C.
2. Mounted on glass epoxy PC board with 4×1.0" X 1.0" (2.54 X 2.54 cm) copper pad.

Parameter	Symbol	Test Conditions	Rating	Unit
Forward Voltage per element	V_F	$I_F=1.5\text{A}$	1.3	V
Maximum DC Reverse Current at Maximum DC Blocking Voltage	I_R	$T_a=25^\circ\text{C}$	5.0	μA
		$T_a=125^\circ\text{C}$	50	μA
Maximum Reverse Recovery Time	t_{rr}	$I_F=0.5\text{A}$ $I_R=1.0\text{A}$ $I_{rr}=0.25\text{A}$	200	ns



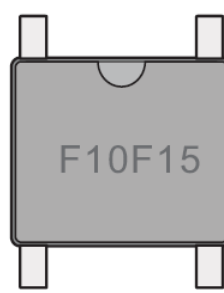



ABF mechanical data

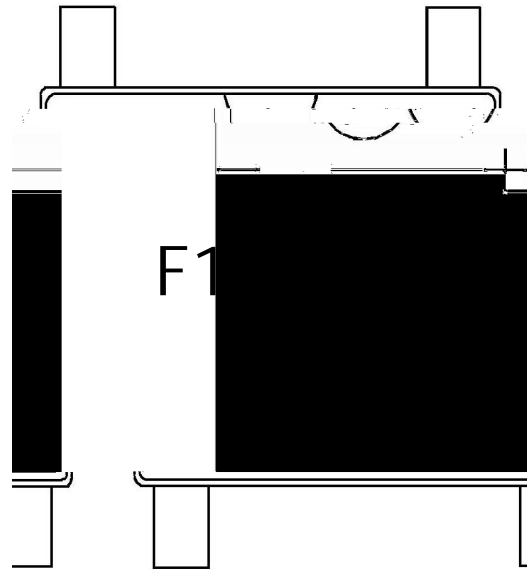
UNIT	A	C	D	E	H	d	e				a	
mm	max 1.2	0.22	5.2	4.5	6.4	4.2	0.7	0.05	0.6	0.2		
	max 47	8.9	205	177	252	165	28	0.3				7°
mil	min 39	5.9	193	166	236	150	20		37	24	8	

Marking

Type number	Marking code
FTB10F-15	F10F15



The diagram shows a rectangular component with four pins (two on top, two on bottom) and a semi-circular notch on the top edge. The marking code 'F10F15' is printed in the center of the component.



F10F15

1 *

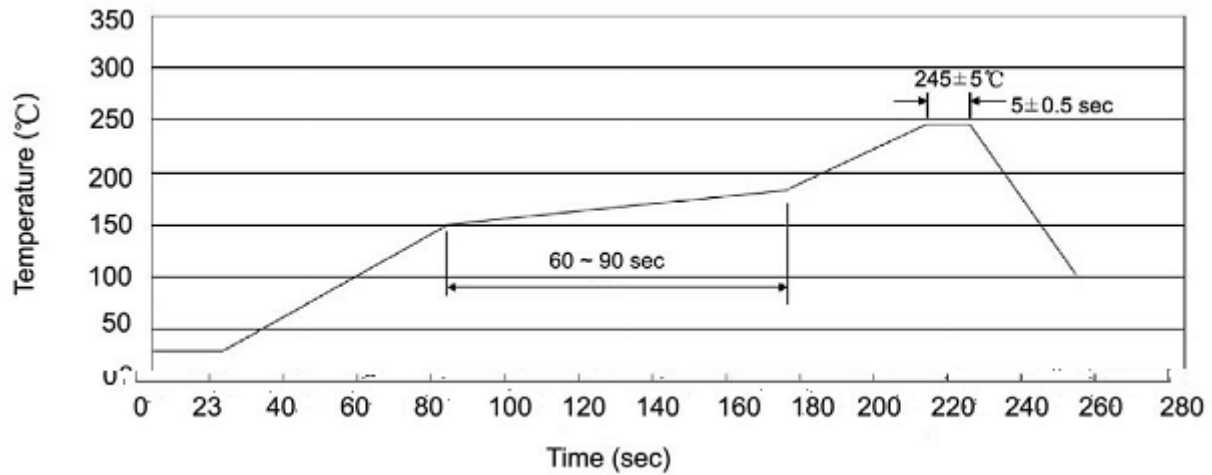
3 *

Note:

F10F15 Product Type Code

Lot No. Code The 1st * means:YM Code The last 3 * means:little Lot

No Code

Temperature Profile for IR Reflow Soldering (Pb-Free)

Note:

- | | | | | | |
|---|-------|-----|-----------|--------|---|
| 1 | 25 | 150 | 60 | 90sec; | 1.Preheating:25~150 , Time:60~90sec. |
| 2 | 245±5 | | 5±0.5sec; | | 2.Peak Temp.:245±5 , Duration:5±0.5sec. |
| 3 | | 2 | 10 | /sec. | 3. Cooling Speed: 2~10 /sec. |

260±5

10±1 sec.

Temp.:260±5

Time:10±1 sec

/ REEL

Package Type 封装形式	Units 包装数量					Dimension 包装尺寸 (unit: mm ³)		
	Units/Reel 只/卷盘	Reels/Inner Box 卷盘/盒	Units/Inner Box 只/盒	Inner Boxes/Outer Box 盒/箱	Units/Outer Box 只/箱	Reel	Inner Box 盒	Outer Box 箱
ABF	5000	2	10000	5	50000	13" x15	336X336X40	380X335X366