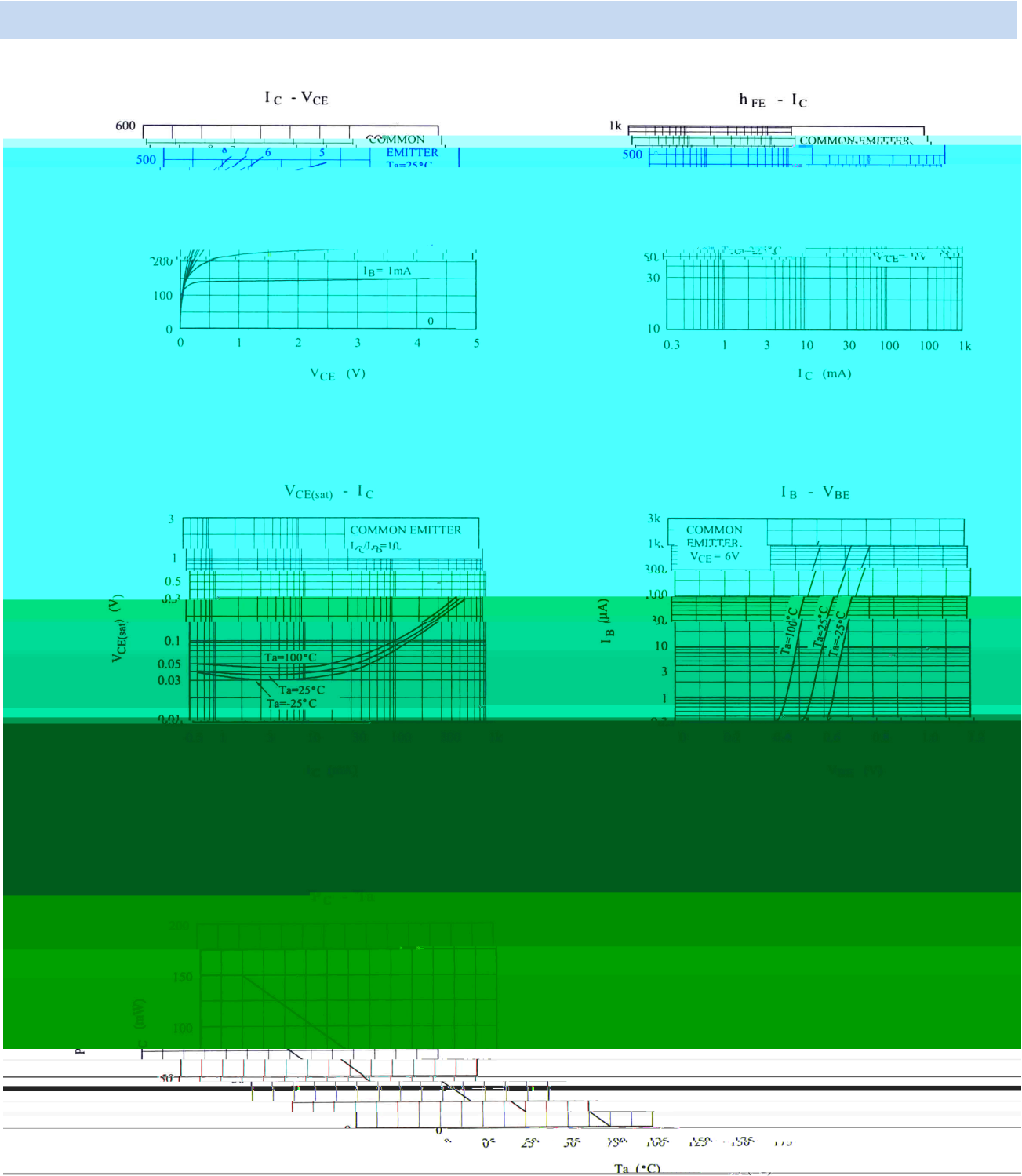


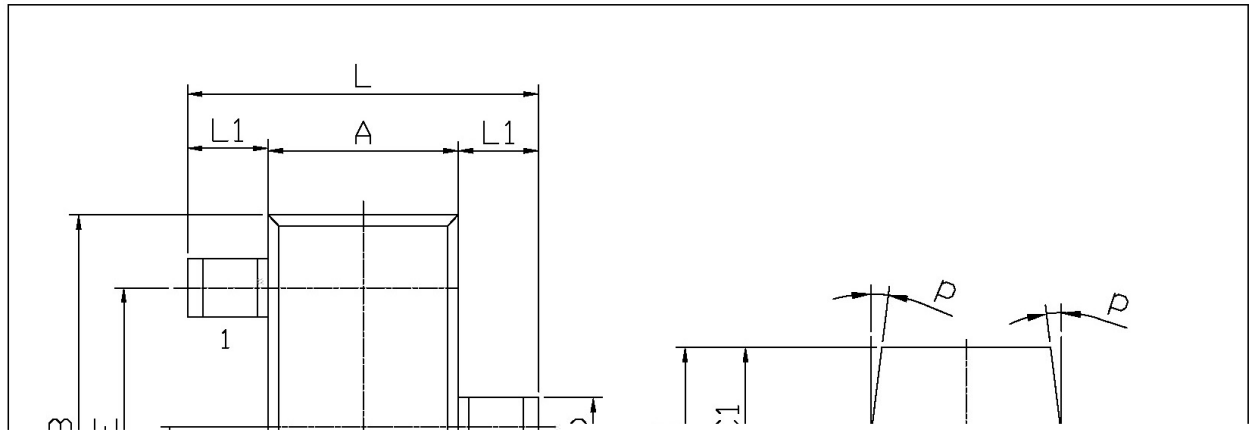
Parameter	Symbol	Rating	Unit
Collector to Base Voltage	V_{CBO}	35	V
Collector to Emitter Voltage	V_{CEO}	30	V
Emitter to Base Voltage	V_{EBO}	5.0	V
Collector Current	I_C	500	mA
Base Current	I_B	50	mA
Collector Power Dissipation	P_C	150	mW
Junction Temperature	T_j	150	°C
Storage Temperature Range	T_{stg}	-55 150	°C

Parameter	Symbol	Test Conditions	Min	Typ	Max	Unit
Collector Cut-Off Current	I_{CBO}	$V_{CB}=35V$ $I_E=0$			0.1	μA
Emitter Cut-Off Current	I_{EBO}	$V_{EB}=5.0V$ $I_C=0$			0.1	μA
DC Current Gain	$h_{FE(1)}$	$V_{CE}=1.0V$ $I_C=100mA$	70		400	
	$h_{FE(2)}$	$V_{CE}=6.0V$ $I_C=400mA$	25			
Collector to Emitter Saturation Voltage	$V_{CE(sat)}$	$I_C=100mA$ $I_B=10mA$		0.1	0.25	V
Base to Emitter Voltage	V_{BE}	$V_{CE}=1.0V$ $I_C=100mA$		0.8	1.0	V
Transition Frequency	f_T	$V_{CE}=6.0V$ $I_C=20mA$		300		MHz
Collector Output Capacitance	C_{ob}	$V_{CE}=6.0V$ $f=1.0MHz$		7.0		pF

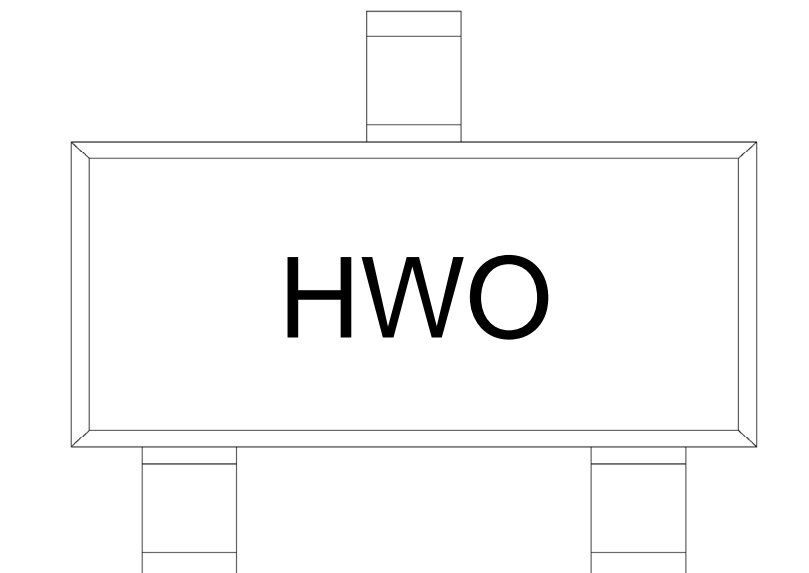


SOT-23

单位: mm

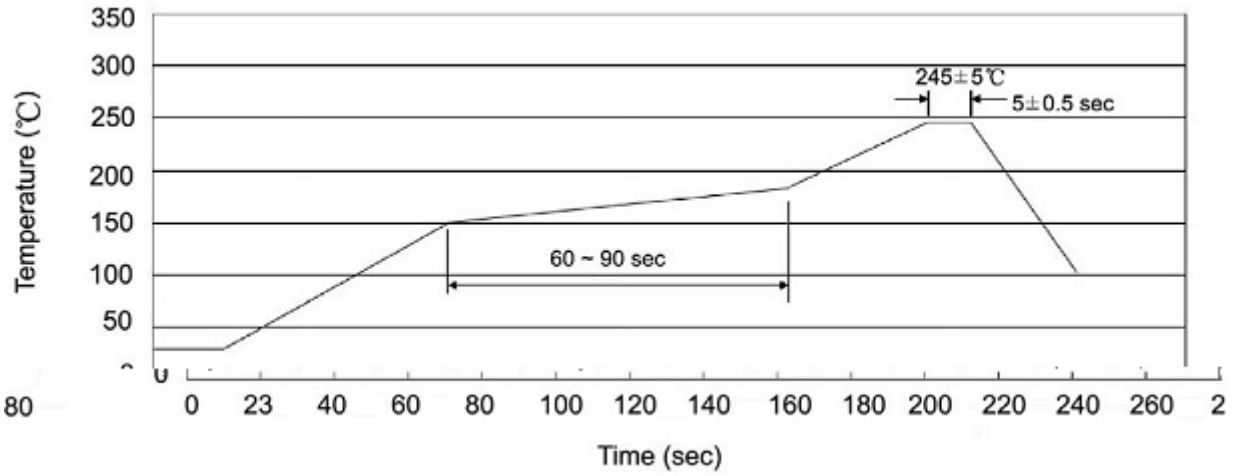


	Min.	Max.		Min.	Max.
L	2.2	2.7	C	1.30Max	
L1	0.45	0.65	C1	0.90	1.20
A	1.15	1.50	c	0.05	0.20
P	2.70	3.10	K	0	0.10
E	1.70	2.10	M	0.20MIN	
E1	0.85	1.05	P	7°	
b	0.35	0.55			



H
W
O h_{FE}
Note:
H Company Code
W Product Type
O h_{FE} Classifications Symbol

Temperature Profile for IR Reflow Soldering(Pb-Free)



Note:

1 25 150 60