

/ Descriptions

TO-220 Voltage Regulator in a TO-220 Plastic Package.

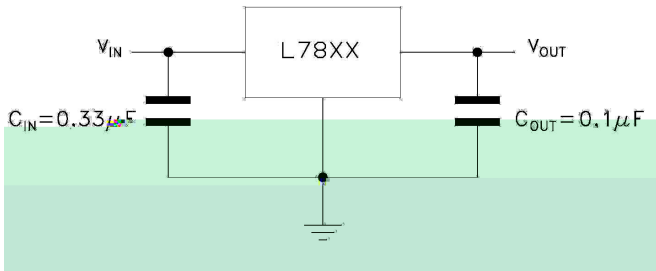
/ Features

1A,
3-Terminal regulators ,output current up to 1A, internal thermal overload protection and short-circuit limiting.

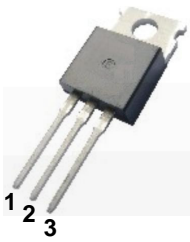
/ Applications

Voltage Regulator.

/ Equivalent Circuit or Application Circuit



/ Pinning



PIN1 IN PIN 2 GND PIN 3 OUT

/ Marking

See Marking Instructions.

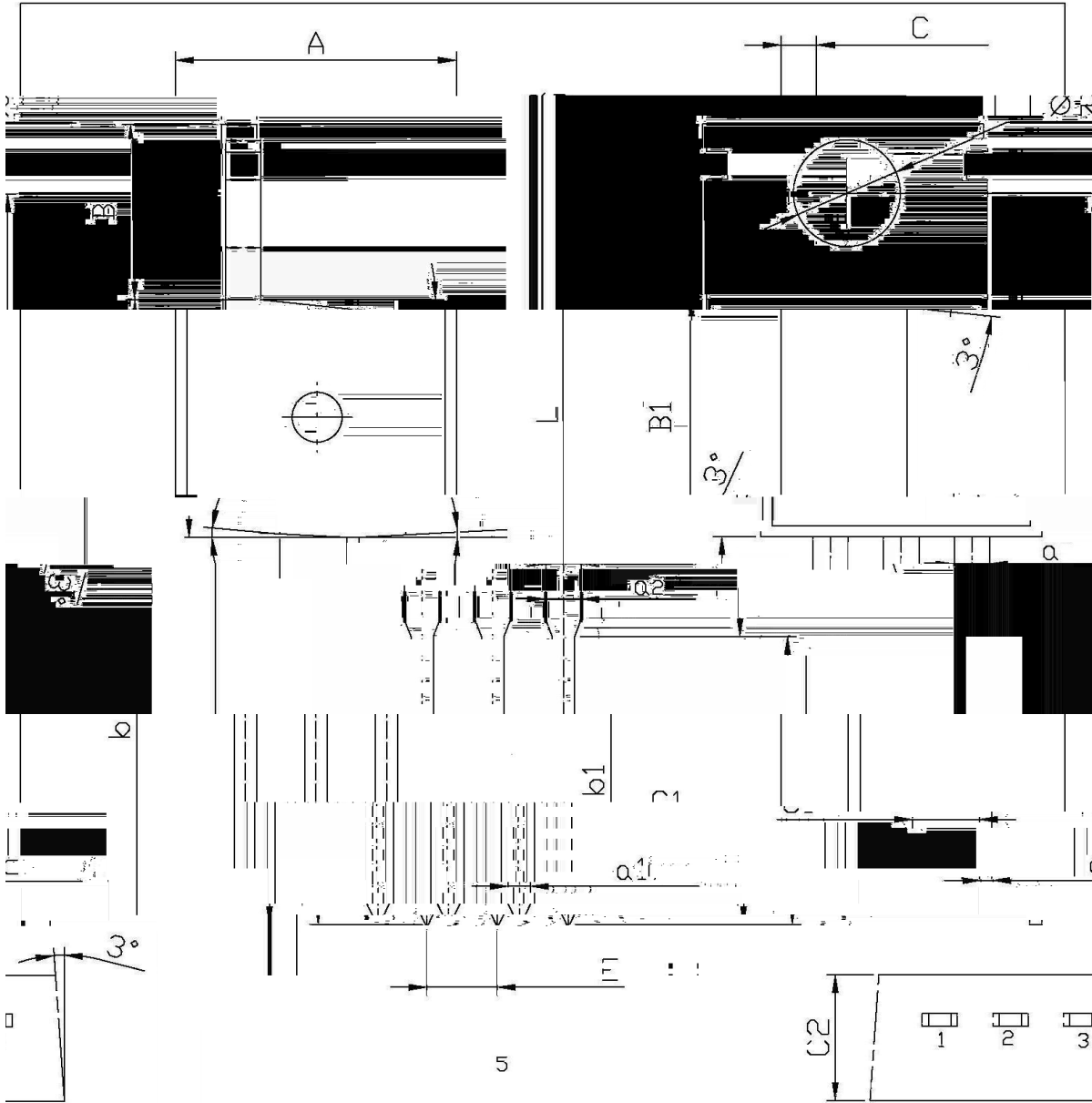
Parameter	Symbol	Rating	Unit
Input voltage	V_i	35	V
Operating Junction Temperature Range	T_{OPR}	0 125	
Storage temperature range	T_{stg}	-65 150	

Parameter	Symbol	Test Conditions	Min	Typ	Max	Unit
Output voltage	V_o	$T_j=25$	4.8	5.0	5.2	V
		$V_i=7V-20V,$ $I_o=5mA-1A$ P_o 15W	4.75	5.0	5.25	V
Load Regulation	V_o	$T_j=25$				

/ Package Dimensions

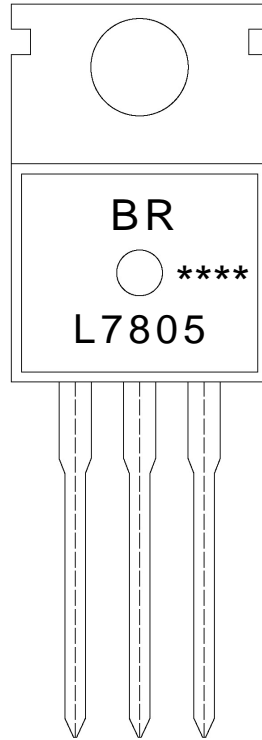
TO-220

单位: mm



Dimension In Millimeters			Dimension In Millimeters		
Symbol	Min	Max	Symbol	Min	Max
A	9.8	10.2	C	1.2	1.4
B	3.56	3.64	B1	6.3	6.7
b	12.6	13.6	C1	2.2	2.6
b1	9.6	10.6	a1	0.7	0.9
a	1.22	1.32	c	0.4	0.6
E	2.34	2.74	C2	4.3	4.7
a2	1.25	1.45			

/ Marking Instructions



BR

L7805

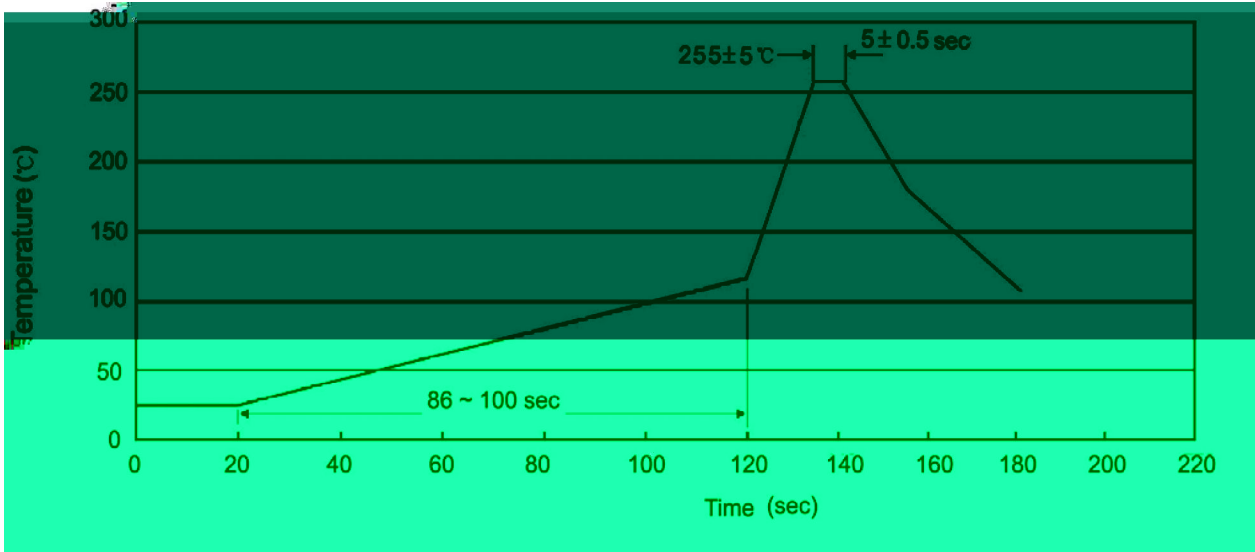
Note:

BR: Company Code.

L7805: Product Type.

****: Lot No. Code, code change with Lot No.

() / Temperature Profile for Dip Soldering(Pb-Free)



Note:

25 150 60 90sec;
255±5 5±0.5sec;
2 10 /sec.

1.Preheating:25~150 , Time:60~90sec.
2.Peak Temp.:255±5 , Duration:5±0.5sec.
3. Cooling Speed: 2~10 /sec.

/ Resistance to Soldering Heat Test Conditions

270±5 10±1 sec. Temp:270±5 Time:10±1 sec

/ Packaging SPEC.

/ BULK

Package Type	Units				Dimension (unit mm3)		

/ TUBE

Package Type	Units				Dimension (unit mm3)		