

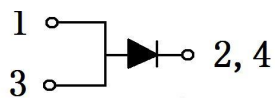
Rev.E May.-2016

TO-263

Schottky Diode in a TO-263 Plastic Package.

High Forward Surge Capability, Ultra Low Forward Voltage Drop, Excellent High Temperature Stability.

For use in low voltage,high frequency inverters, free wheeling, and polarity protection applications.



PIN1 Anode

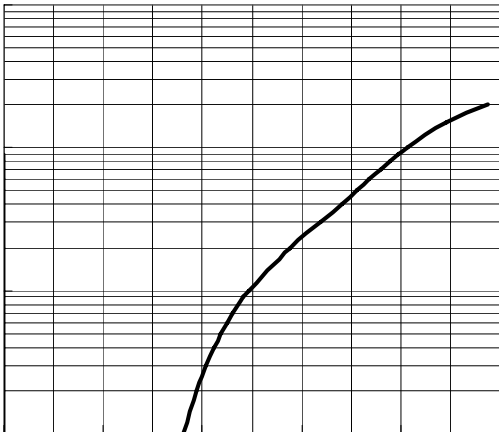
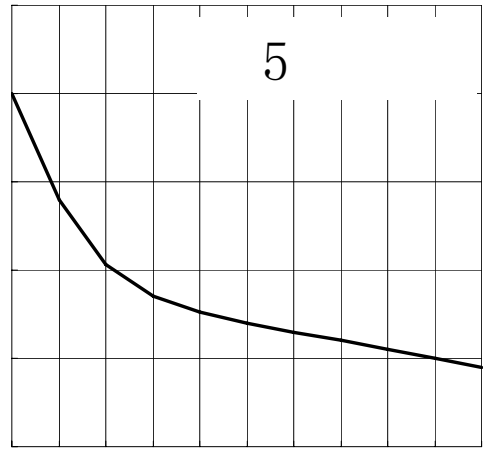
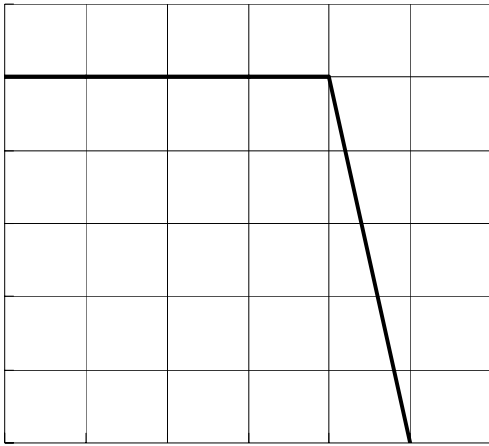
PIN 2,4 Cathode

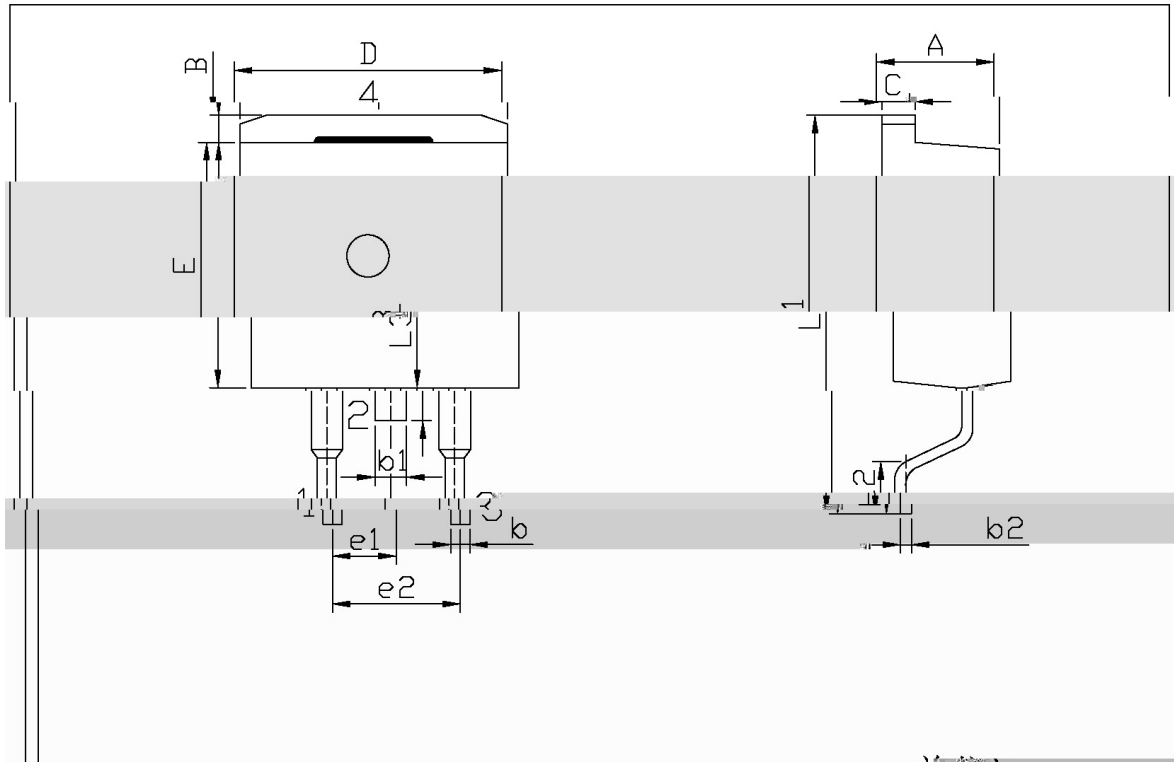
PIN 3 Anode

See Marking Instructions.

Parameter	Symbol	Rating	Unit
Peak Repetitive Reverse Voltage Working Peak Reverse Voltage DC Blocking Voltage	$V_{RM}$ $V_{RSM}$ $V_{DC}$	150	V
RMS Reverse Voltage	$V_{RMS}$	105	V
Average forward rectified current	$I_{F(AV)}$	1×10	A
Non Repetitive Peak Surge Current	$I_{FSM}$	200	A
Thermal Resistance Junction to Case	$R_{Jc}$	2.8	/W
Junction and Storage Temperature Range	$T_j$ $T_{stg}$	-40 +150	

Parameter	Symbol	Test Conditions	Min	Typ	Max	Unit
Reverse Voltage	$V_{(BR)R}$	$I_R=1mA(T_a=25^\circ C)$	150			V
Forward Voltage	$V_F$	$I_F=2A(T_a=25^\circ C)$		0.58		V
		$I_F=10A(T_a=25^\circ C)$		0.81	0.85	V
		$I_F=2A(T_a=125^\circ C)$		0.47		V
		$I_F=10A(T_a=125^\circ C)$		0.69	75	V
Instantaneous Reverse Current	$I_R$ Note 1	$V_R=150V(T_a=25^\circ C)$		5	50	$\mu A$
		$V_R=150V(T_a=125^\circ C)$			20	mA





单位: mm

Symbol	Dimensions In Millimeters		Symbol	Dimensions In Millimeter	
	Min	Max		Min	Max
A	4.30	4.70	E	9.00	9.40
B	1.00	1.40	e1	0.20	0.30
C	0.50	0.80	e2	0.20	0.30
D	4.00	4.50	b1	0.20	0.30
E	9.00	9.40	b2	0.20	0.30

Symbol

Dimensions In Millimeters

Symbol

Dimensions In Millimeter

Min

Max

Min

Max

A

4.30

4.70

E

9.00

9.40

B

1.00

1.40

e1

0.20

0.30

C

0.50

0.80

e2

0.20

0.30

D

4.00

4.50

b1

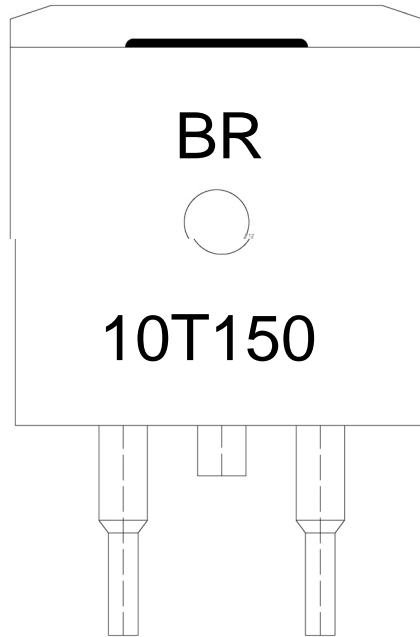
0.20

0.30

b2

0.20

0.30



BR

10T150

\*\*\*\*

Note:

BR:

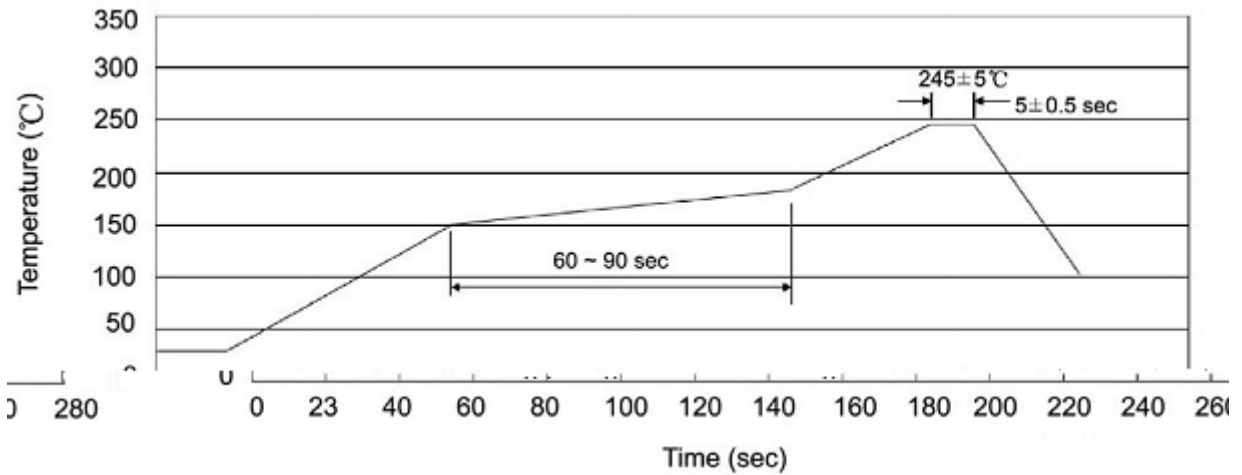
10T150

\*\*\*\*:

Company Code

Product Type.

Lot No. Code, code change with Lot No.

**Temperature Profile for IR Reflow Soldering(Pb-Free)**


Note:

- |   |       |     |           |        |   |
|---|-------|-----|-----------|--------|---|
| 1 | 25    | 150 | 60        | 90sec; | 1.Preheating:25~150 , Time:60~90sec.    |
| 2 | 245±5 |     | 5±0.5sec; |        | 2.Peak Temp.:245±5 , Duration:5±0.5sec. |
| 3 |       | 2   | 10        | /sec.  | 3. Cooling Speed: 2~10 /sec.            |

260±5

10±1 sec.

Temp.:260±5

Time:10±1 sec

/ REEL

Package Type 封装形式	Units 包装数量					Dimension 包装尺寸 (unit: mm <sup>3</sup> )		
	只 卷盘	卷盘 盒	只 盒	盒 箱	只 箱		盒	箱

/ TUBE

Package Type 封装形式	Units 包装数量					Dimension 包装尺寸 (unit: mm <sup>3</sup> )		
	只 套管	套管 盒	只 盒	盒 箱	只 箱	套管	盒	箱